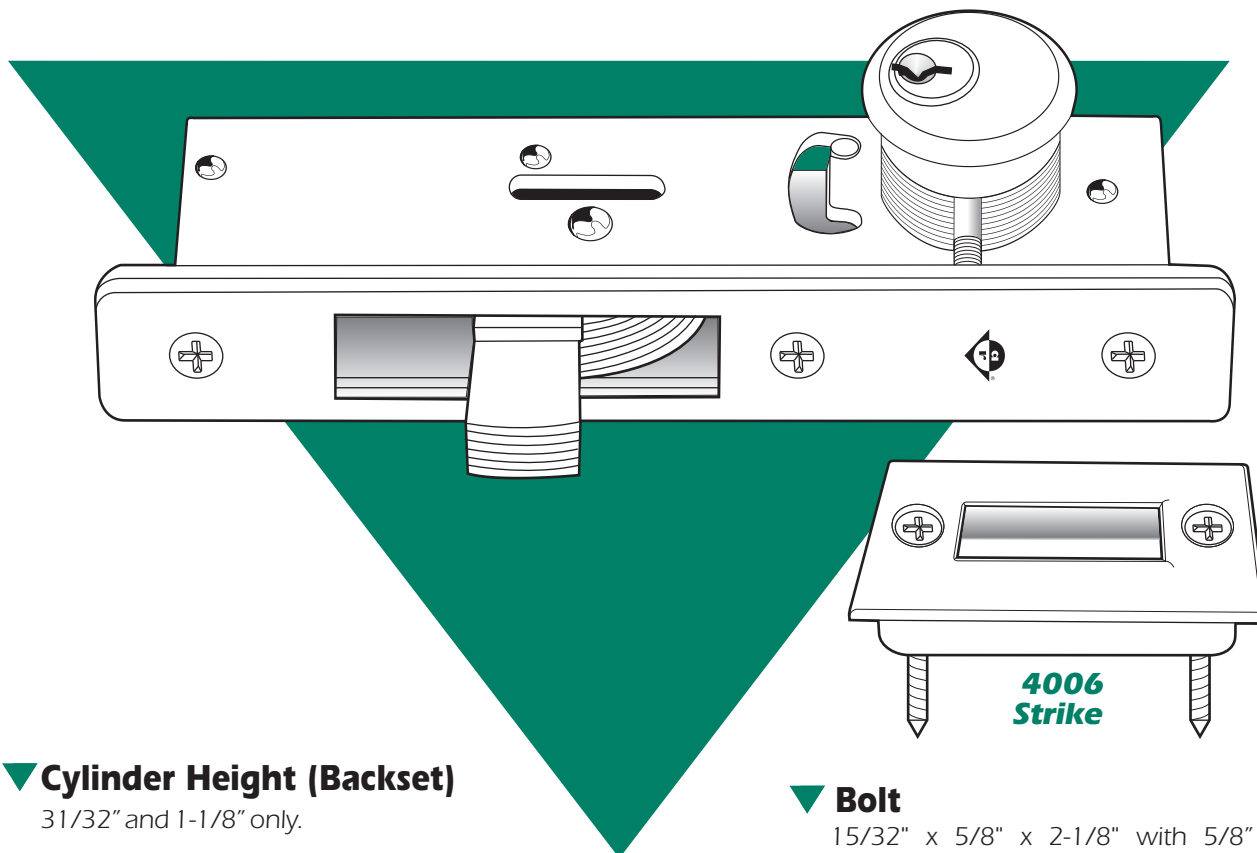


## Bottom Rail Deadbolt Swing Bolt

*For Full Glass (Frameless) Doors*

### 1830

ANSI/BHMA Type E8211 (Grade 1)



#### ▼ Cylinder Height (Backset)

31/32" and 1-1/8" only.

#### ▼ Case

Steel with corrosion-resistant plating. 1" x 6" x depth. (Depth varies with cylinder height. See table on back page.)

#### ▼ Function

For bottom rail locking of ultra-narrow stile or tempered glass doors whose bottom rail (shoe) is too shallow for the MS1861 (page SW-5). Mechanism is that of the MS1850A Deadbolt, but with the bolt size reduced. This keeps the threshold strike opening to a practical minimum, avoiding collection of debris or snagging of spike-heeled shoes. Armor faceplate protects cylinder setscrews from tampering and keeps them from loosening.

#### ▼ Bolt

15/32" x 5/8" x 2-1/8" with 5/8" throw. Six ply laminated steel with eight plys within case. Center ply has Alumina-Ceramic core to deter hacksaw attack.

#### ▼ Strike

See back page for dimensions of strike slot which can be cut in metal thresholds. 4006 strike (shown) is optionally available, with stainless steel trimplate and plastic box.

#### ▼ Operation

360° turn of key or thumbturn throws or retracts the counterbalanced bolt. Key can be removed only when bolt is in a positively locked or unlocked position. Lock accepts any standard 1-5/32" mortise cylinder from either or both sides. Cylinder must have MS® cam. (See page SW-33.)



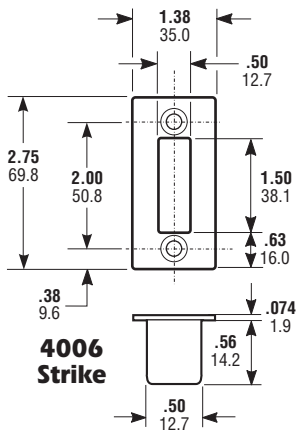
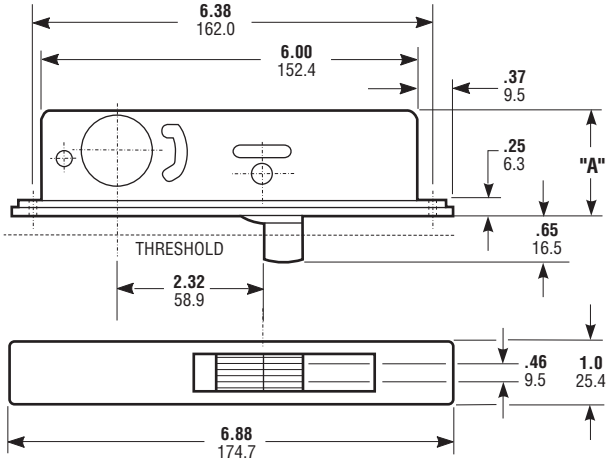
# 1830 Bottom Rail Deadbolt

## Swing Bolt

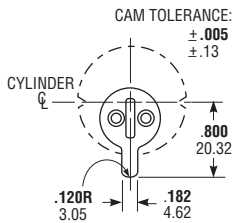
### DIMENSIONS

INCHES  
MILLIMETERS

Nominal, subject to tolerance extremes.



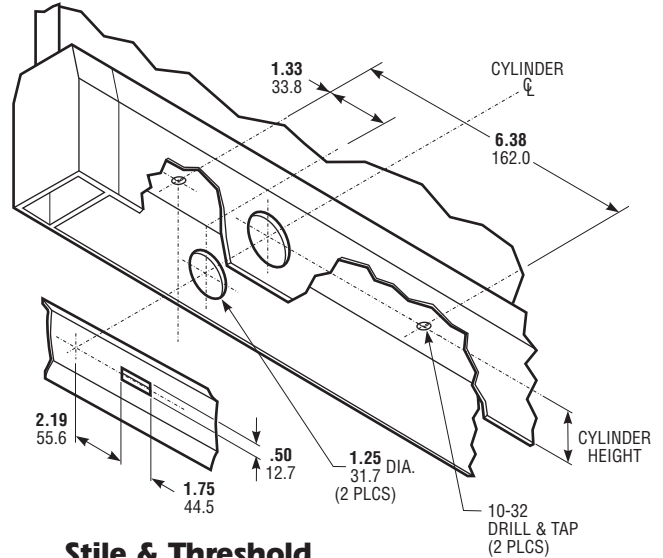
DASH NO.	CYLINDER HEIGHT	DIM. "A"
-02	31/32" 24.6	1.63 41.4
-03	1-1/8" 28.6	1.78 45.2



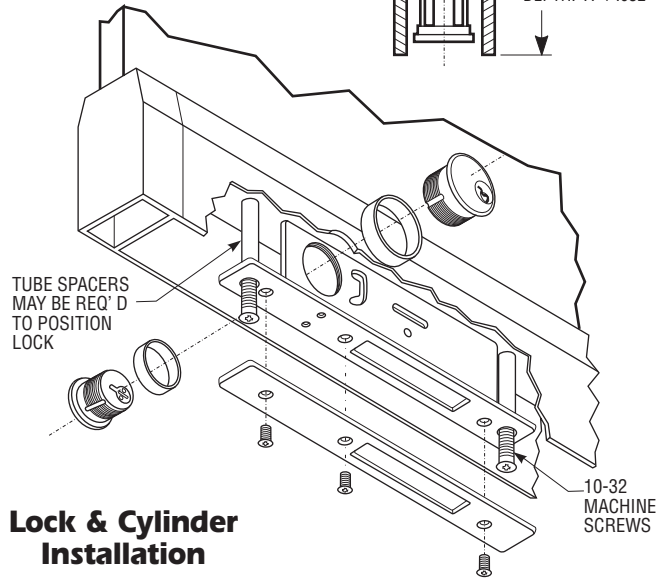
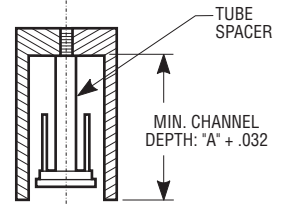
### Cylinder Cam

1830 deadbolts are operable by any standard 1-5/32" diameter mortise cylinder with special MS® cam dimensioned as shown. Cylinders with MS® cams can be readily obtained from most cylinder manufacturers. See page SW-33 for cylinder make and trim ring information.

### INSTALLATION



### Stile & Threshold Preparation



### Lock & Cylinder Installation

### HOW TO ORDER

Specify quantity and the following information.  
Order related hardware separately.

**Dash No.**  
Specify for lock depth and cylinder height according to chart above

**Finish**  
628 Clear Anodized

**1830 - 02 - 628**

Faceplate available in 628 Clear Anodized only.  
Specify 4006 Strike separately if required.

### OPTIONS

Specify either 31/32" or 1-1/8" cylinder height. Order 4006 strike and cylinder(s) separately if required.

### STANDARD PACKAGE

Individually boxed with machine screws for mounting. Cylinders and/or thumbturn available at extra cost. Shipping weight: 1-1/2 lbs.