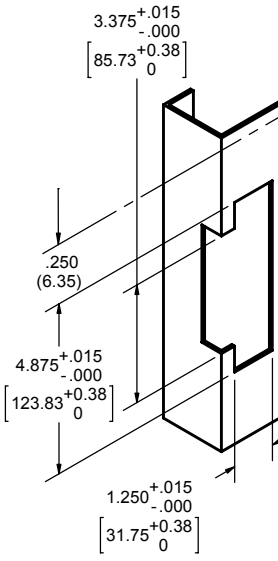
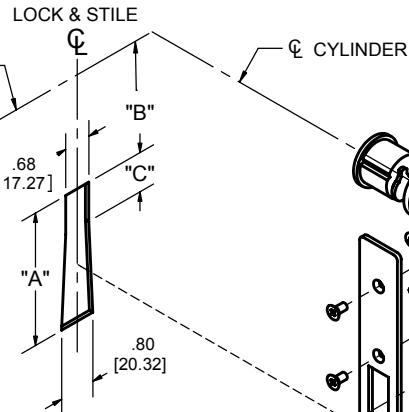


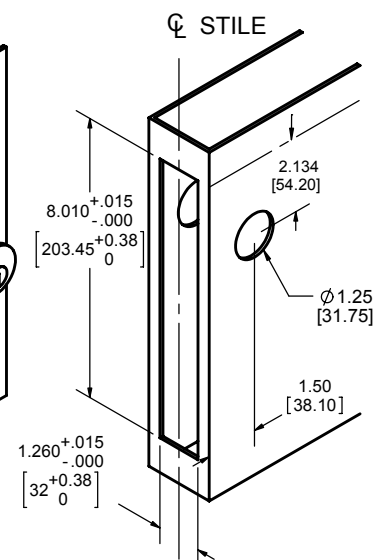
JAM PREPARATION FOR ANSI STRIKE



BOLT TYPE	"A"	"B"	"C"
REGULAR BOLT	3.38 (85.85)	1.38 (35.05)	1.00 (25.4)
SHORT BOLT	2.75 (69.85)	1.38 (35.05)	1.00 (25.4)
HOOK BOLT	1.94 (49.28)	2.19 (55.63)	.25 (6.35)

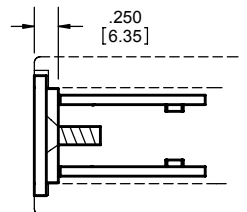


LOCK & CYLINDER INSTALLATION



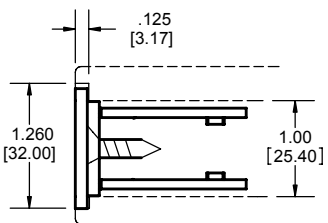
LOCK STILE PREPARATION

1



HOLLOW METAL DOOR LOCK INSTALLATION

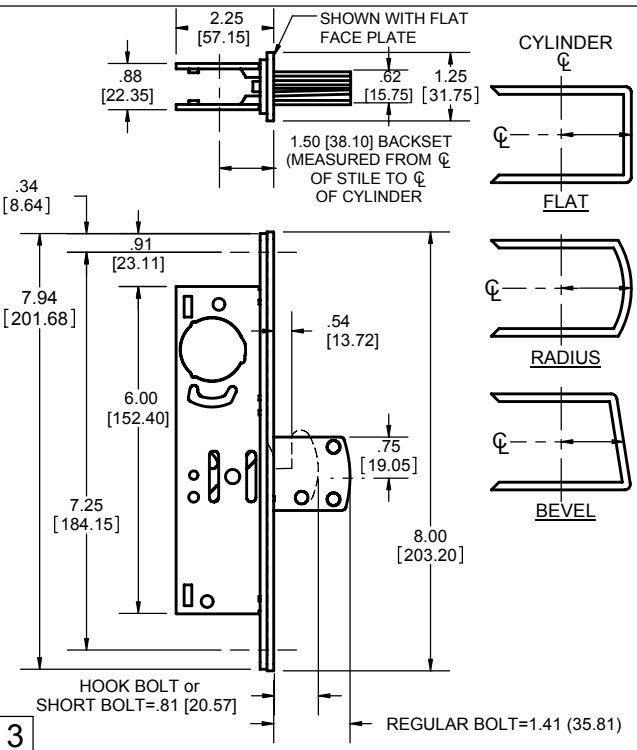
- #12-24 x 1/2 (M5-48 x 12) FLAT HEAD MACHINE SCREW FURNISHED WITH LOCK.
- LOCK SUPPORT SHALL BE PROVIDED BY DOOR MANUFACTURER.



WOOD DOOR LOCK INSTALLATION

- #12 FLAT HEAD WOOD SCREWS REQUIRED.
- STANDARD PACKAGING INCLUDES MACHINE MOUNTING SCREWS. SPECIFY WOOD SCREWS WHEN REQUIRED

5



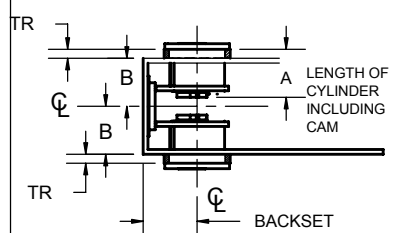
3

RELATED HARWARE AND OPTIONAL ACCESSORIES

- ARMORED STRIKES (STEEL REINFORCED) ARE AVAILABLE FOR USE IN ALUMINUM OR HOLLOW METAL JAMBS.
 - TRIM STRIKES (WITH OR WITHOUT DUST BOX) ARE AVAILABLE FOR USE IN ALUMINUM, HOLLOW METAL OR WOOD JAMBS.
SEE 4000, 4001 AND 4002 FOR INFORMATION ON ITEMS 1 AND 2 ABOVE.
 - CYLINDERS ARE AVAILABLE FROM ADAMS RITE KEYED DIFFERENT OR KEYED ALIKE IN SETS.
 - CYLINDER GUARD - SPECIFY MS 4043.
 - EXIT INDICATOR - SPECIFY 4089.
- SEE CATALOG FOR ADDITIONAL DETAILS.

4

CYLINDER TRIM RING

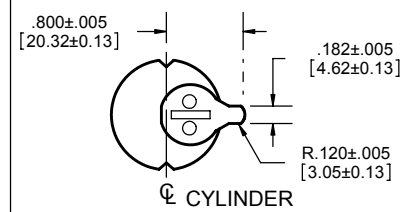


TRIM RING THICKNESS (TR) WILL VARY WITH SPECIFIC CYLINDER MAKE, NUMBER OF PINS, & SPECIFIC DOOR THICKNESS. TO DETERMINE TRIM RING THICKNESS USE THE FOLLOWING FORMULA:

$$TR = A + .125 - B$$

(3.17)

2



MS 1850 ANSI SERIES LOCKS ARE OPERABLE BY ANY STANDARD 1 5/32" DIAMETER (29.37) MORTISE CYLINDER WITH SPECIAL MS CAM DIMENSIONED AS ABOVE. CYLINDERS WITH MS CAMS CAN BE READILY OBTAINED FROM MOST CYLINDER MANUFACTURERS.

AVAILABLE FACE PLATES	CATALOG No.
FLAT	1850 ANSI
RADIUS	1851 ANSI
LEFT BEVEL	1852 ANSI (LH)
RIGHT BEVEL	1852 ANSI (RH)

ADAMS RITE
MANUFACTURING CO.
260 Santa Fe Street, Pomona, CA 91767
Phone: 909-632-2300 Fax: 909-632-2375

MS1850 ANSI **INSTALLATION INSTRUCTIONS**
80-0180-4

Date: 05/17/07
Rev. A Ecn 11062 Appvd: