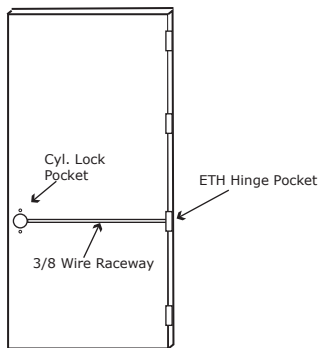


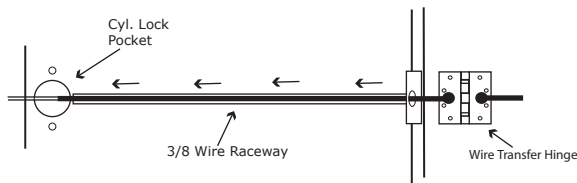
# Installation Instructions for CL03 & 05 Cyl. Locks

## Modified by: Command Access Technologies

**Step 1** - The door must be machined with a 3/8 wire raceway, Cyl. lock pocket & preped for a wire transfer hinge.  
**Make sure the pocket is free of debris.**

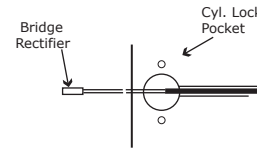


**Step 2** - Run the wires from the ETH hinge through the 3/8 race way starting at the ETH hinge & exiting into the lock pocket.

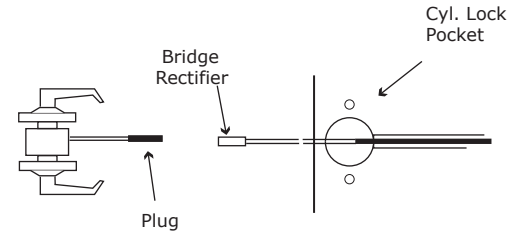


**Step 3** - Screw the ETH hinge to the door (at this time **DO NOT** connect the hinge wires on the jamb side to the wires coming from the power supply).

**Step 4** - Connect the wires exiting the pocket to the Bridge Rectifier (included).



**Step 5** - Connect the Bridge Rectifier to the plug exiting the Cyl. lock chassis.



**Step 6** - Carefully slip the connected Cyl. lock chassis into the pocket paying close attention not to pinch any wires

**Step 7** - Mount the Cyl. lock per manufacturer's instructions.

**Step 8** - Connect the wires from the power supply at the ETH hinge on the jamb side. Connect the hinge to the jamb.

## Legend of Terms

**EU (Fail Secure):** When power is applied the outside trim will unlock. With power removed the outside trim is locked.

**EL (Fail Safe):** When power is applied the outside trim will lock. With power removed the outside trim is unlocked.

**REX (Request to Exit Switch):** Monitors the inside handle

## Electrical Specifications

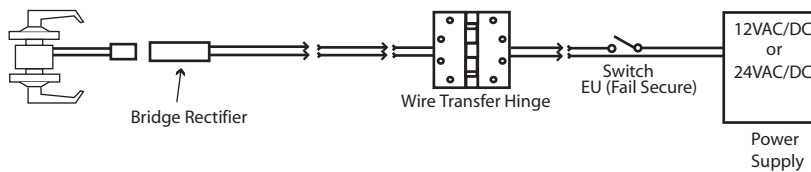
### Solenoids:

Volts	Current	Coil Resistance
24VAC/DC	150mA	179.5 Ohms +/- 10%
12VAC/DC	250mA	48.5 Ohms +/- 10%

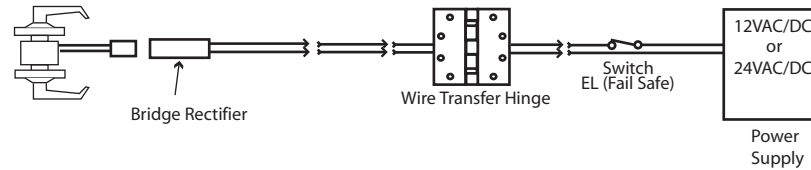
**Switches:** 3 Wats .25A 175VAC/DC

**REX:** Green/Red - Common (C)  
 Black/Red - Norm. Open (NO)  
 Red/Red - Norm. Closed (NC)

EU (Fail Secure)



EL (Fail Safe)



Command Access Technologies

888-622-2377

www.commandaccess.com

\* Command Access is not a licensee, or affiliated, Associated or connected with ASSA Abloy, Yale Security Group, Corbin Russwin, Sargent Manufacturing Company, Schlage Lock Company, Ingersol Rand, Best Lock Company, Falcon Lock Company, PDQ, Baldwin Hardware, Arrow lock company or any of their subsidiaries or affiliates.\*