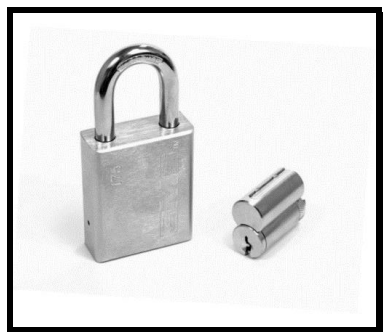
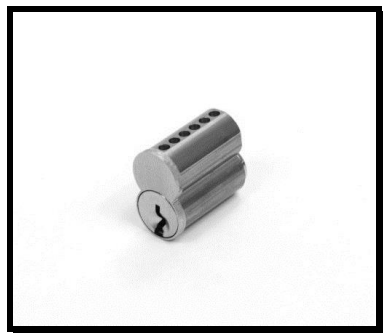


# GMS™

## LOCK CYLINDERS

(Effective 1<sup>st</sup> August 2013)



# 2013

# W

# D

# I

# G

# E

# C

# P

# R

# S

# IS

**A PERFECT FIT**

## New Additions

G23, G45 key ways	New Schlage 123 and 145 key way added to our knob, mortise, rim and large format IC cores	Page. 3,5,6,8
DD key way	New Best DD key way added to our small format IC cores	Page. 7
SLB key way	New Sargent LB key way added to our knob, mortise, and rim cylinders	Page. 3,5,6
LFICP line of padlocks	New IC Padlock that accepts Schlage large format IC cores	Page. 10
Large turn knob for 15/16" T-turn cylinder	The large turn knob is now available for the 15/16" T-turn cylinders	Page. 4
SX key way for LFIC	The SX (Schlage C ~ K) key way is now available for the LFIC	Page. 8
TS cam	The Falcon/Saflok cam is now available for our mortise cylinders and IC housings	Page. 3,4,8
US32D finish	US32D (stainless steel) finish is now available for our mortise and rim cylinders	Page. 3,4,5

**Index**

<i>Index</i> _____	2
<i>Mortise Keyed Cylinders</i> _____	3
<i>Mortise T-Turn Cylinders</i> _____	4
<i>Mortise Dummy Cylinders</i> _____	4
<i>Rim Cylinders</i> _____	5
<i>Knob Cylinders</i> _____	6
<i>Small format IC Cores</i> _____	7
<i>Large format IC cores</i> _____	8
<i>IC Housings</i> _____	8
<i>Profile Cylinders</i> _____	9
<i>Large Format IC Padlocks</i> _____	10
<i>Small Format IC Padlocks</i> _____	10
<i>Standard Padlocks</i> _____	11
<i>Key Blanks</i> _____	12
<i>Accessories</i> _____	12
<i>Terms</i> _____	13

# 2013 US Price List

## Mortise Keyed Cylinders



Model	Description	Carton Qty.	Case Qty.	List Price
<b>M156</b>	Mortise cylinder, 15/16" length, 5 pin	10	100	<b>\$14.65</b>
<b>M100</b>	Mortise cylinder, 1" length, 5 pin	10	100	<b>\$14.65</b>
<b>M118</b>	Mortise cylinder, 1-1/8" length, 5 pin drilled 6	10	100	<b>\$15.00</b>
<b>M118</b>	Mortise cylinder, 1-1/8" length, 6 pin	10	100	<b>\$17.00</b>
<b>M114</b>	Mortise cylinder, 1-1/4" length, 5 pin drilled 6	10	100	<b>\$15.30</b>
<b>M114</b>	Mortise cylinder, 1-1/4" length, 6 pin	10	100	<b>\$17.35</b>

Custom lengths available. Special prices apply.

### Availability

			Model					
			M156	M100	M118	M118	M114	M114
			15/16" length 5 pin	1" length 5 pin	1-1/8" length 5 pin drilled 6	1-1/8" length 6 pin	1-1/4" length 5 pin drilled 6	1-1/4" length 6 pin
Keyway	AW	Arrow						
	CB	Corbin 60						
	CL4	Corbin L4						
	KW	Kwikset						
	RD1	Russwin D1						
	SA	Sargent LA						
	SAX	Sargent LA - LD						
	SLB	Sargent LB						
	RA	Sargent RA						
	SE	Segal 9						
	G23	Schlage 123 (no key)						
	G45	Schlage 145 (no key)		N/A			N/A	
	SC	Schlage C						
	SCE	Schlage E						
	SCF	Schlage F						
	SX	Schlage C - K						
	WR	Weiser E						
YA	Yale 8							
YGA	Yale GA							
Finish	10	Satin Bronze						
	10B	Oil Rubbed Bronze						
	15	Satin Nickel						
	26	Polished Chrome						
	26D	Satin Chrome						
	3	Polished Brass						
	4	Satin Brass						
32D	Stainless Steel (\$ 1.25 additional charge apply)							
Cam	AR	Adams Rite						
	AT	AR + ST						
	BE	Best Mortise						
	CL	Corbin Cloverleaf						
	SA	Sargent						
	SL	Schlage L						
	ST	Yale Standard						
TS	Falcon/Saflok							
Keying	A2	Keyed in Pairs, 5 pin						
	A2-6	Keyed in Pairs, 6 pin						
	KD	Keyed Different, 5 pin						
	KD-6	Keyed Different, 6 pin						
	KS	Special Keying, 5 pin						
	KS-6	Special Keying, 6 pin						
	OB	Zero-Bitted, 5 pin						
OB-6	Zero-Bitted, 6 pin							

How to order:

**M100 SC 26D AR A2**

■ = Stock items. Extra lead-time applies for non-stock items.

## Mortise T-Turn Cylinders



Model	Description	Carton Qty.	Case Qty.	List Price
<b>M156TC</b>	Mortise t-turn cylinder, 15/16" length, die-cast turn piece	10	100	<b>\$13.00</b>
<b>M156T</b>	Mortise t-turn cylinder, 15/16" length, brass turn piece	10	100	<b>\$14.95</b>
<b>M100TC</b>	Mortise t-turn cylinder, 1" length, die-cast turn piece	10	100	<b>\$13.00</b>
<b>M100T</b>	Mortise t-turn cylinder, 1" length, brass turn piece	10	100	<b>\$15.30</b>
<b>M118T</b>	Mortise t-turn cylinder, 1-1/8" length, brass turn piece	10	100	<b>\$15.65</b>
<b>M114T</b>	Mortise t-turn cylinder, 1-1/4" length, brass turn piece	10	100	<b>\$15.95</b>

### Availability

			Model					
			M156TC 15/16" length	M156T 15/16" length	M100TC 1" length	M100T 1" length	M118T 1-1/8" length	M114T 1-1/4" length
Finish	10	Satin Bronze						
	10B	Oil Rubbed Bronze						
	15	Satin Nickel						
	26	Polished Chrome						
	26D	Satin Chrome						
	3	Polished Brass						
	4	Satin Brass						
	32D	Stainless Steel (\$ 1.25 additional charge apply)						
Cam	AR	Adams Rite						
	AT	AR + ST						
	BE	Best Mortise						
	CL	Corbin Cloverleaf						
	SA	Sargent						
	SL	Schlage L						
	ST	Yale Standard						
	TS	Falcon/Saflok						

How to order: **M100T 26D AR**  
 = Stock items. Extra lead-time applies for non-stock items.

## Mortise Dummy Cylinders



Model	Description	Carton Qty.	Case Qty.	List Price
<b>M156D</b>	Mortise dummy cylinder, 15/16" length	10	100	<b>\$9.45</b>
<b>M100D</b>	Mortise dummy cylinder, 1" length	10	100	<b>\$9.45</b>
<b>M118D</b>	Mortise dummy cylinder, 1-1/8" length	10	100	<b>\$9.70</b>
<b>M114D</b>	Mortise dummy cylinder, 1-1/4" length	10	100	<b>\$10.10</b>

### Availability

			Model			
			M156D 15/16" length	M100D 1" length	M118D 1-1/8" length	M114D 1-1/4" length
Finish	10	Satin Bronze				
	10B	Oil Rubbed Bronze				
	15	Satin Nickel				
	26	Polished Chrome				
	26D	Satin Chrome				
	3	Polished Brass				
	4	Satin Brass				
	32D	Stainless Steel (\$ 1.25 additional charge apply)				

How to order: **M100D 26D**  
 = Stock items. Extra lead-time applies for non-stock items.

# 2013 US Price List

## Rim Cylinders



Model	Description	Carton Qty.	Case Qty.	List Price
<b>R118</b>	Rim cylinder, 1-1/8", 5 pin drilled 6	10	100	<b>\$17.75</b>
<b>R118</b>	Rim cylinder, 1-1/8", 6 pin	10	100	<b>\$19.75</b>
<b>R118D</b>	Rim dummy cylinder	10	100	<b>\$13.85</b>

## Availability

			Model		
			R118 1-1/8" length 5 pin drill 6	R118 1-1/8" length 6 pin	R118D 1-1/8" length
Keyway	<b>AW</b>	Arrow			N/A
	<b>CB</b>	Corbin 60			
	<b>CL4</b>	Corbin L4			
	<b>KW</b>	Kwikset			
	<b>RD1</b>	Russwin D1			
	<b>SA</b>	Sargent LA			
	<b>SAX</b>	Sargent LA - LD			
	<b>SLB</b>	Sargent LB			
	<b>RA</b>	Sargent RA			
	<b>SE</b>	Segal 9			
	<b>G23</b>	Schlage 123 (no key)			
	<b>G45</b>	Schlage 145 (no key)	N/A		
	<b>SC</b>	Schlage C			
	<b>SCE</b>	Schlage E			
	<b>SCF</b>	Schlage F			
	<b>SX</b>	Schlage C - K			
<b>WR</b>	Weiser E				
<b>YA</b>	Yale 8				
<b>YGA</b>	Yale GA				
Finish	<b>10</b>	Satin Bronze			
	<b>10B</b>	Oil Rubbed Bronze			
	<b>15</b>	Satin Nickel			
	<b>26</b>	Polished Chrome			
	<b>26D</b>	Satin Chrome			
	<b>3</b>	Polished Brass			
	<b>4</b>	Satin Brass			
<b>32D</b>	Stainless Steel (\$ 1.25 additional charge apply)				
Keying	<b>A2</b>	Keyed in Pairs, 5 pin			N/A
	<b>A2-6</b>	Keyed in Pairs, 6 pin			
	<b>KD</b>	Keyed Different, 5 pin			
	<b>KD-6</b>	Keyed Different, 6 pin			
	<b>KS</b>	Special Keying, 5 pin			
	<b>KS-6</b>	Special Keying, 6 pin			
	<b>OB</b>	Zero-Bitted, 5 pin			
<b>OB-6</b>	Zero-Bitted, 6 pin				

How to order:

**R118 SC 26D A2**

 = Stock items. Extra lead-time applies for non-stock items.

## Knob Cylinders



Model	Description	Carton Qty.	Case Qty.	List Price
K001	Knob cylinder, 5 pin drilled 6	10	100	<b>\$14.75</b>
K001	Knob cylinder, 6 pin	10	100	<b>\$16.65</b>
K002	Knob cylinder, Arrow style, 5 pin drilled 6	10	100	<b>\$14.75</b>
K002	Knob cylinder, Arrow style, 6 pin	10	100	<b>\$16.65</b>
K003	Knob cylinder, Sargent style, 5 pin drilled 6	10	100	<b>\$15.55</b>
K003	Knob cylinder, Sargent style, 6 pin	10	100	<b>\$17.45</b>

## Availability

			Model					
			K001		K002		K003	
			Schlage style 5 pin drill 6	Schlage style 6 pin	Arrow style 5 pin drill 6	Arrow style 6 pin	Sargent style 5 pin drill 6	Sargent style 6 pin
Keyway	AW	Arrow						
	CB	Corbin 60						
	CL4	Corbin L4						
	KW	Kwikset						
	RD1	Ruswin D1						
	SA	Sargent LA						
	SAX	Sargent LA - LD						
	SLB	Sargent LB						
	RA	Sargent RA						
	SE	Segal 9						
	G23	Schlage 123 (no key)	N/A		N/A		N/A	
	G45	Schlage 145 (no key)						
	SC	Schlage C						
	SCE	Schlage E						
	SCF	Schlage F						
	SX	Schlage C - K						
	WR	Weiser E						
YA	Yale 8							
YGA	Yale GA							
Finish	26D	Satin Chrome						
	4	Satin Brass						
Keying	A2	Keyed in Pairs, 5 pin						
	A2-6	Keyed in Pairs, 6 pin						
	KD	Keyed Different, 5 pin						
	KD-6	Keyed Different, 6 pin						
	KS	Special Keying, 5 pin						
	KS-6	Special Keying, 6 pin						
	OB	Zero-Bitted, 5 pin						
OB-6	Zero-Bitted, 6 pin							

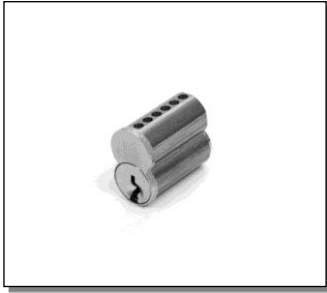
How to order:

**K001 SC 26D OB**

**■** = Stock items. Extra lead-time applies for non-stock items.

# 2013 US Price List

## Small format IC Cores



Model	Description	Carton Qty.	Case Qty.	List Price
<b>IC6</b>	Best small format IC core, 6 pin	10	100	<b>\$18.40</b>
<b>IC7</b>	Best small format IC core, 7 pin	10	100	<b>\$19.35</b>
<b>IC7DD</b>	Best small format IC core, 7 pin, DD keyway	10	100	<b>\$21.45</b>
<b>IC7T</b>	Best small format IC core, 7 pin, T series keyway	10	100	<b>\$21.45</b>
<b>IC7W</b>	Best small format IC core, 7 pin, W series keyway	10	100	<b>\$22.50</b>

## Availability

			Model IC Best style
Length	6	6 pin	
	7	7 pin	
Keyway	1C	Arrow 1C	
	1D	Arrow 1D	
	A	Best A	
	B	Best B	
	C	Best C	
	D	Best D	
	E	Best E	
	F	Best F	
	G	Best G	
	H	Best H	
	J	Best J	
	K	Best K	
	L	Best L	
	M	Best M	
	Q	Best Q	
	R	Best R	
	DD	Best DD	
	TB	Best TB	
	TC	Best TC	
	TD	Best TD	
TE	Best TE		
WA	Best WA		
WB	Best WB		
WC	Best WC		
WD	Best WD		
WG	Best WG		
WH	Best WH		
Finish	10B	Oil Rubbed Bronze	
	26	Polished Chrome	
	26D	Satin Chrome	
	3	Polished Brass	
	4	Satin Brass	

How to order:

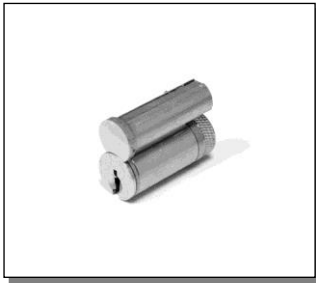
**IC 7 K26D**



= Stock items. Extra lead-time applies for non-stock items.



## Large format IC cores



Model	Description	Carton Qty.	Case Qty.	List Price
LFIC	Large format IC core	10	100	\$35.75

## Availability

			Model
			LFIC
			Schlage style large format
Keyway	G23	Schlage 123 (no key)	
	G45	Schlage 145 (no Key)	
	SC	Schlage C	
	SCE	Schlage E	
	SCF	Schlage F	
	SX	Schlage C - K	
Finish	26D	Satin Chrome	
	4	Satin Brass	
Keying	OB	Zero-Bitted	
	KS	Special keying	

How to order:

**LFIC SCE 26D OB**

 = Stock items. Extra lead-time applies for non-stock items.

## IC Housings



Model	Description	Carton Qty.	Case Qty.	List Price
ICM*	Best IC mortise housing, straight	10	100	\$18.70
ICT	Best IC mortise housing, tapered	10	100	\$19.05
ICR	Best IC rim housing	10	100	\$19.55
ICXM	Best IC mortise/rim housing	10	100	\$20.40
CCM	Corbin IC mortise housing, straight	10	100	\$28.95
SCM	Sargent IC mortise housing, straight	10	100	\$28.95
ICS	Schlage IC mortise housing, straight	10	100	\$28.95
ICSR	Schlage IC rim housing	10	100	\$33.30
YCM	Yale mortise housing, straight	10	100	\$28.95

\* ICM custom lengths available. Special prices apply.

## Availability

			Model								
			ICM	ICT	ICR	ICXM	CCM	SCM	ICS	ICSR	YCM
			Best Straight	Best Tapered	Best Rim	Best Convert	Corbin	Sargent	Schlage Straight	Schlage Rim	Yale
Length	6	6 pin				N/A					
	7	7 pin							N/A		
	10	Satin Bronze									
Finish	10B	Oil Rubbed Bronze									
	15	Satin Nickel									
	26	Polished Chrome									
	26D	Satin Chrome									
	3	Polished Brass									
	4	Satin Brass									
Cam	AR	Adams Rite									
	BE	Best Mortise							N/A		
	CL	Corbin Cloverleaf									
	SA	Sargent									
	SL	Schlage L									
	ST	Yale Standard									
	TS	Falcon/Saflok							N/A		

How to order:

**ICM 7 26D ST**

 = Stock items. Extra lead-time applies for non-stock items.

# 2013 US Price List

## Profile Cylinders



Model	Description	Carton Qty.	Case Qty.	List Price
<b>PR10</b>	Euro-profile single cylinder, 5 pin	10	100	<b>\$24.80</b>
<b>PR11</b>	Euro-profile double cylinder, 5 pin	10	100	<b>\$48.20</b>
<b>PR12</b>	Euro-profile cylinder/thumb-turn, 5 pin	10	100	<b>\$48.20</b>

## Availability

			Model		
			PR10 Single Cylinder	PR11 Double Cylinder	PR12 T-Turn Cylinder
Keyway	AW	Arrow			
	CB	Corbin 60			
	CL4	Corbin L4			
	KW	Kwikset			
	RD1	Ruswin D1			
	SA	Sargent LA			
	SAX	Sargent LA - LD			
	SLB	Sargent LB			
	RA	Sargent RA			
	SE	Segal 9			
	SC	Schlage C			
	SCE	Schlage E			
	SCF	Schlage F			
	SX	Schlage C - K			
	WR	Weiser E			
	YA	Yale 8			
YGA	Yale GA				
Finish	26D	Satin Chrome			
	4	Satin Brass			
Keying	A2	Keyed in Pairs, 5 pin			
	KD	Keyed Different, 5 pin			
	KS	Special Keying, 5 pin			
	OB	Zero-Bitted, 5 pin			

How to order:

**PR11 YA 26D KD**

████████ = Stock items. Extra lead-time applies for non-stock items.

## Large Format IC Padlocks



Model	Description	Carton Qty.	Case Qty.	List Price
LFICP1751	Large format IC padlock, 1-3/4" wide, 1" shackle, less cylinder	6	48	\$29.60
LFICP1752	Large format IC padlock, 1-3/4" wide, 2" shackle, less cylinder	6	48	\$33.35
LFICP1753	Large format IC padlock, 1-3/4" wide, 3" shackle, less cylinder	6	48	\$34.25
LFICP2001	Large format IC padlock, 2" wide, 1" shackle, less cylinder	6	48	\$32.00
LFICP2002	Large format IC padlock, 2" wide, 2" shackle, less cylinder	6	48	\$35.75
LFICP2003	Large format IC padlock, 2" wide, 3" shackle, less cylinder	6	48	\$36.40

### Availability

			Model	
			LFICP175	LFICP200
			1-3/4" Body	2" Body
Shackle	1	1" Shackle clearance		
	2	2" Shackle clearance		
	3	3" Shackle clearance		
Finish	26D	Satin Chrome		

How to order:

**LFICP175 3 26D**

■ = Stock items. Extra lead-time applies for non-stock items.

## Small Format IC Padlocks



Model	Description	Carton Qty.	Case Qty.	List Price
ICP1751	Small format IC padlock, 1-3/4" wide, 1" shackle, less cylinder	6	48	\$26.80
ICP1752	Small format IC padlock, 1-3/4" wide, 2" shackle, less cylinder	6	48	\$30.20
ICP1753	Small format IC padlock, 1-3/4" wide, 3" shackle, less cylinder	6	48	\$31.00
ICP2001	Small format IC padlock, 2" wide, 1" shackle, less cylinder	6	48	\$29.00
ICP2002	Small format IC padlock, 2" wide, 2" shackle, less cylinder	6	48	\$32.40
ICP2003	Small format IC padlock, 2" wide, 3" shackle, less cylinder	6	48	\$32.95

### Availability

			Model	
			ICP175	ICP200
			1-3/4" Body	2" Body
Shackle	1	1" Shackle clearance		
	2	2" Shackle clearance		
	3	3" Shackle clearance		
Finish	26D	Satin Chrome		

How to order:

**ICP175 3 26D**

■ = Stock items. Extra lead-time applies for non-stock items.

# 2013 US Price List

## Standard Padlocks



Model	Description	Carton Qty.	Case Qty.	List Price
P1751	Standard padlock, 1-3/4" wide body, 1" shackle, 5 pin drilled 6	6	48	\$34.45
P1751	Standard padlock, 1-3/4" wide body, 1" shackle, 6 pin	6	48	\$36.45
P1751LC	Standard padlock, 1-3/4" wide body, 1" shackle, less cylinder	6	48	\$26.80
P1752	Standard padlock, 1-3/4" wide body, 2" shackle, 5 pin drilled 6	6	48	\$37.85
P1752	Standard padlock, 1-3/4" wide body, 2" shackle, 6 pin	6	48	\$39.85
P1752LC	Standard padlock, 1-3/4" wide body, 2" shackle, less cylinder	6	48	\$30.20
P1753	Standard padlock, 1-3/4" wide body, 3" shackle, 5 pin drilled 6	6	48	\$38.50
P1753	Standard padlock, 1-3/4" wide body, 3" shackle, 6 pin	6	48	\$40.50
P1753LC	Standard padlock, 1-3/4" wide body, 3" shackle, less cylinder	6	48	\$30.85
P2001	Standard padlock, 2" wide body, 1" shackle, 5 pin drilled 6	6	48	\$36.80
P2001	Standard padlock, 2" wide body, 1" shackle, 6 pin	6	48	\$38.80
P2001LC	Standard padlock, 2" wide body, 1" shackle, less cylinder	6	48	\$29.15
P2002	Standard padlock, 2" wide body, 2" shackle, 5 pin drilled 6	6	48	\$40.30
P2002	Standard padlock, 2" wide body, 2" shackle, 6 pin	6	48	\$42.30
P2002LC	Standard padlock, 2" wide body, 2" shackle, less cylinder	6	48	\$32.65
P2003	Standard padlock, 2" wide body, 3" shackle, 5 pin drilled 6	6	48	\$40.85
P2003	Standard padlock, 2" wide body, 3" shackle, 6 pin	6	48	\$42.90
P2003LC	Standard padlock, 2" wide body, 3" shackle, less cylinder	6	48	\$33.25

## Availability

			Model			
			P175 1-3/4" Body 5 pin drill 6	P175 1-3/4" Body 6 pin	P200 2" Body 5 pin drill 6	P200 2" Body 6 pin
Shackle	1	1" Shackle clearance				
	2	2" Shackle clearance				
	3	3" Shackle clearance				
Keyway	AW	Arrow				
	CB	Corbin 60				
	CL4	Corbin L4				
	KW	Kwikset				
	RD1	Russwin D1				
	SA	Sargent LA				
	SAX	Sargent LA - LD				
	SLB	Sargent LB				
	RA	Sargent RA				
	SE	Segal 9				
	G23	Schlage 123 (no key)				
	G45	Schlage 145 (no key)	N/A		N/A	
	SC	Schlage C				
	SCE	Schlage E				
	SCF	Schlage F				
	SX	Schlage C - K				
	WR	Weiser E				
YA	Yale 8					
YGA	Yale GA					
Finish	26D	Satin Chrome				
	A2	Keyed in Pairs, 5 pin				
Keying	A2-6	Keyed in Pairs, 6 pin				
	KD	Keyed Different, 5 pin				
	KD-6	Keyed Different, 6 pin				
	KS	Special Keying, 5 pin				
	KS-6	Special Keying, 6 pin				
	OB	Zero-Bitted, 5 pin				
	OB-6	Zero-Bitted, 6 pin				

How to order:

**P175 1 SCE 26D OB-6**

**■** = Stock items. Extra lead-time applies for non-stock items.

## Key Blanks

Model	Description	Carton Qty.	Case Qty.	List Price
<b>KB5</b>	Brass key blanks, 5 pin, 50 pack	n/a	n/a	<b>\$20.40</b>
<b>KB6</b>	Brass key blanks, 6 pin, 50 pack	n/a	n/a	<b>\$26.25</b>
<b>KBB</b>	Nickel silver key blanks, Best, 7 pin, 50 pack	n/a	n/a	<b>\$58.30</b>
<b>KBB DD</b>	Nickel silver key blanks, Best DD, 7 pin, 50 pack	n/a	n/a	<b>\$105.00</b>
<b>KBBT</b>	Nickel silver key blanks, Best T series, 7 pin, 50 pack	n/a	n/a	<b>\$105.00</b>
<b>KBBW</b>	Nickel silver key blanks, Best W series, 7 pin, 50 pack	n/a	n/a	<b>\$142.50</b>

## Accessories

Model	Description	Carton Qty.	Case Qty.	List Price
<b>CAM1</b>	Mortise cylinder cams, 10 pack	n/a	n/a	<b>\$14.45</b>
<b>CAM2</b>	IC mortise housing cams, 10 pack	n/a	n/a	<b>\$14.45</b>
<b>CAM3</b>	Large format mortise IC housing cam, 10 pack	n/a	n/a	<b>\$14.45</b>
<b>CAP-K002</b>	Replacement end cap for K002 knob cylinder, 10 pack	n/a	n/a	<b>\$3.20</b>
<b>CAP-60</b>	K001 end cap 6.0mm, 10 pack	n/a	n/a	<b>\$9.65</b>
<b>CAP-70</b>	K001 end cap 7.0mm, 10 pack	n/a	n/a	<b>\$9.65</b>
<b>COL1</b>	Mortise cylinder collar, 5/32" solid, 10 pack	n/a	n/a	<b>\$12.85</b>
<b>COL2</b>	Mortise cylinder trim ring, 1/8" , 10 pack	n/a	n/a	<b>\$10.15</b>
<b>COL3</b>	Mortise cylinder collar, 1/4" with spring washer	n/a	n/a	<b>\$4.00</b>
<b>COL4</b>	Rim cylinder collar, 10 pack	n/a	n/a	<b>\$20.85</b>
<b>COL5</b>	Mortise cylinder threaded ring, 10 pack	n/a	n/a	<b>\$31.55</b>
<b>COL10</b>	1/8" blocking ring, 10 pack	n/a	n/a	<b>\$16.05</b>
<b>COL11</b>	1/4" blocking ring, 10 pack	n/a	n/a	<b>\$16.05</b>
<b>COL12</b>	3/8" blocking ring, 10 pack	n/a	n/a	<b>\$20.35</b>
<b>COL13</b>	1/2" block ring, 10 pack	n/a	n/a	<b>\$20.35</b>
<b>DRV-RT</b>	Standard padlock key retaining driver, 10 pack	n/a	n/a	<b>\$16.05</b>
<b>IC-SP1</b>	IC housing spacer, 10 pack	n/a	n/a	<b>\$3.20</b>
<b>KIT-LUG</b>	Padlock retainer lug and driver for knob/lever cylinders	n/a	n/a	<b>\$4.00</b>
<b>KIT-K001YA</b>	Yale conversion kit	n/a	n/a	<b>\$4.65</b>
<b>KIT-ICXR</b>	Conversion kit for ICXM	n/a	n/a	<b>\$5.70</b>
<b>K001HSKIT</b>	Knob cylinder housing kit	n/a	n/a	<b>\$14.05</b>
<b>MPT1</b>	Rim cylinder mounting plate, 10 pack	n/a	n/a	<b>\$17.10</b>
<b>P001</b>	Knob cylinder plug, drilled 6	n/a	n/a	<b>\$8.20</b>
<b>SCR1</b>	Mortise cylinder cam screws, 10 pack	n/a	n/a	<b>\$2.25</b>
<b>SCR2</b>	Rim cylinder mounting screws, 10 pack	n/a	n/a	<b>\$8.05</b>
<b>SCR3</b>	IC mortise housing cam screws, 10 pack	n/a	n/a	<b>\$2.25</b>
<b>SCR4</b>	IC mortise housing security screws, 10 pack	n/a	n/a	<b>\$3.95</b>
<b>SCR5</b>	Padlock cylinder retaining screws, 10 pack	n/a	n/a	<b>\$4.55</b>
<b>SCR9</b>	Large format mortise IC housing cam screws, 10 pack	n/a	n/a	<b>\$4.55</b>
<b>SPR5</b>	Cylinder spring washer, 10 pack	n/a	n/a	<b>\$9.10</b>
<b>TLP1</b>	Knob long fixed tailpiece, 10 pack	n/a	n/a	<b>\$12.85</b>
<b>TLP2</b>	Knob medium fixed tailpiece, 10 pack	n/a	n/a	<b>\$12.85</b>
<b>TLP3</b>	Knob short fixed tailpiece, 10 pack	n/a	n/a	<b>\$12.85</b>
<b>TLP4</b>	Rim cylinder tailpiece with fixed motion driver, 10 pack	n/a	n/a	<b>\$20.35</b>
<b>TLP5</b>	Single cylinder deadbolt tailpiece, 10 pack	n/a	n/a	<b>\$16.05</b>
<b>TLP6</b>	Double cylinder deadbolt tailpiece, 10 pack	n/a	n/a	<b>\$10.70</b>
<b>TLP7</b>	IC rim housing tailpiece, 10 pack	n/a	n/a	<b>\$12.85</b>
<b>TLP8</b>	Schlage ND series tailpiece, 10 pack	n/a	n/a	<b>\$12.85</b>
<b>TLP9</b>	Schlage rim housing tailpiece, 10 pack	n/a	n/a	<b>\$23.55</b>
<b>TLPMK1</b>	Marks 9 tailpiece, 10 pack	n/a	n/a	<b>\$12.85</b>
<b>TLPMK2</b>	Marks S9 tailpiece, 10 pack	n/a	n/a	<b>\$12.85</b>

# 2013 US Price List

---

## Terms

### Terms

Sales are net 30 days from the date of invoice for qualified, approved open accounts. All other orders will be C.O.D. or prepaid. Accounts past due are charged a 1.5% (18% annum) finance charge billed monthly on unpaid bills and will not be shipped merchandise until balance is current.

### Prices

All prices are subject to change without notice and are not guaranteed. Prevailing prices at time of shipment will apply.

### Minimum Order

No order will be invoiced for less than \$50.00USD plus shipping charges. An annual purchase of \$5000.00USD minimum is required to maintain an open account. 10% surcharge applies for items ordered in less than carton quantities.

### Drop Shipments

Orders may be drop shipped with a 10% surcharge provided the minimum order requirement is met.

### Freight

Freight charges are prepaid and added to invoice. If invoice exceeds two thousand dollars (\$2,000.00USD net), full surface freight is deductible, provided invoice is paid within terms. The risk of loss passes to the buyer when the goods are shipped from GMS warehouses.

### Delivery Conditions

Specified shipping dates are based only on our best estimates, and cannot be guaranteed. We cannot accept orders, which are subject to a penalty clause. GMS is not responsible for, and assumes no liability for, any damages or penalties that might be incurred due to delay in the shipment of its products.

### Title

All merchandise is sold subject to these conditions and shall remain the property of GMS until paid for in full, with all risk of loss or damage to merchandise is assumed by the buyer.

### Returns

Goods may not be returned without prior written authorization from GMS. Returned material must be sent prepaid or it will not be accepted. The returned goods must be accompanied by a written list of the items returned and must contain an explanation regarding the reason for the return. New and unused material of current design accepted by GMS for return is subject to a minimum of 20% restocking and handling charge. Any returns/exchanges due to errors in shipping are subject to restocking/shipping charges if errors are not reported within 2 weeks of receiving the order.

### Guarantee

All GMS products are guaranteed against defects in material or workmanship. GMS does not, however, guarantee its products against defects due to improper installation, the failure to perform due to improper maintenance, or uses for which they were not designed. GMS' only obligation under this guarantee is to repair or replace any of its products assessed by GMS to be defective in material and workmanship after such product is returned to GMS within one year of purchase date by the original purchaser free and clear of all liens and encumbrances, along with proof of purchase and with shipping charges prepaid. GMS disclaims all liability for consequential, incidental or special damages, or lost profits or savings, even if GMS is aware of the possibility thereof, arising out of the purchase or use of products by buyer. Some states do not allow the exclusion or limitation of incidental, consequential or special damages, or lost profit or savings, so the above limitation or exclusion may not apply to the buyer.

Revised: 6<sup>th</sup> June, 2013





**UNITED STATES**

2000 – 124<sup>TH</sup> Ave. NE, Ste B105  
Bellevue, WA 98005  
info@gmslock.com • fax 604-448-1249

**CANADA**

170 – 12860 Clarke Place  
Richmond, BC V6V 2H1

[WWW.GMSLOCK.COM](http://WWW.GMSLOCK.COM) • 888-774-5625

©2013 GMS Industries, Inc.