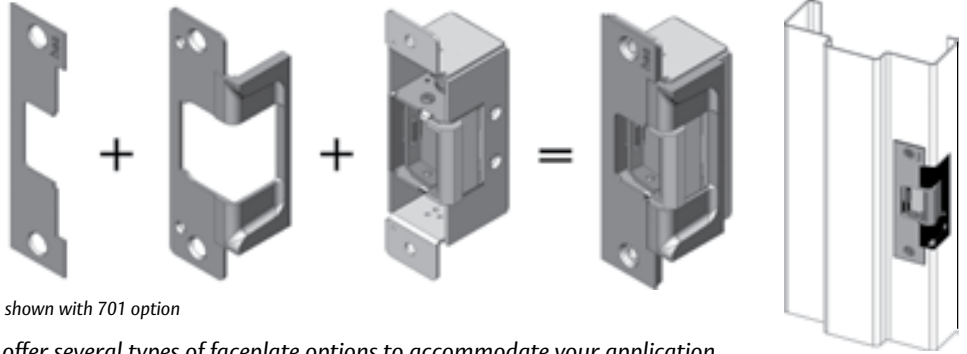




shown with 702 option



We offer several types of faceplate options to accommodate your application. Faceplate options sold separately.



UL 1034  
burglary listed



field selectable  
(fail secure / fail safe)



grade 2

## The pre-load solution

Newly upgraded for 2008, the 7000 series now features hardened stainless steel locking cams. With a modular design to accommodate both cylindrical and rim exit locksets, the 7000 series will accommodate various types of latchbolts from 5/8" to 3/4" throw. The unique design of the keeper module allows the unit to operate under excessive door loading. The heavy-duty construction of the 7000 electric strikes makes them ideal for high usage applications.

### Specifications

- UL 1034, burglary-resistant listed
- ANSI/BHMA A156.31, Grade 2
- MEA New York City accepted
- Patented design

### Frame application

- Steel
- Aluminum
- Wood

### Electrical

- .45 Amp @ 12VDC continuous duty
- .25 Amp @ 24VDC continuous duty

### Standard Features

- Stainless steel construction
- Tamper resistant
- Static strength 1,000 lbs.
- Dynamic strength 50 ft-lbs.
- Endurance 500,000 cycles
- Field selectable fail secure/fail safe
- Accommodates pre-load (fail secure only)
- Horizontal adjustment (783S, 786S and 789S options)
- Non-handed
- Internally mounted solenoid
- Strike body depth 1-11/16"
- Plug-in connector
- Trim enhancer (701 and 702 options)
- Pocket adapter (786S and 789S options)
- Three year limited warranty

cylindrical locksets



rim exit devices



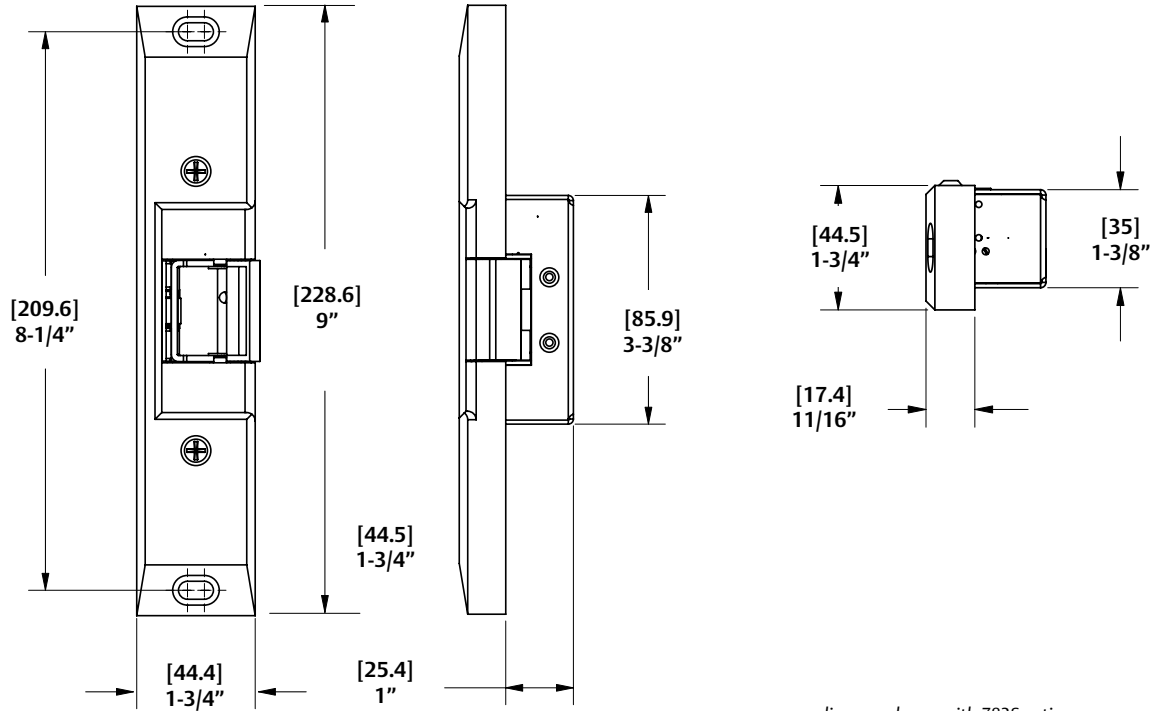


diagram shown with 783S option

### Optional Features

- LBM - Latch bolt monitor

### Accessories

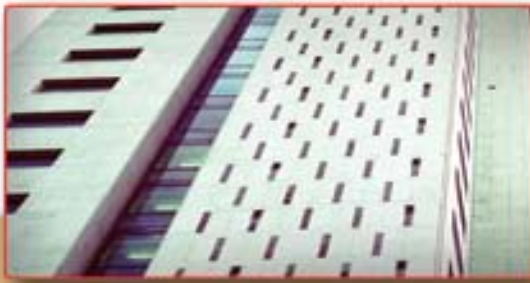
- SMB - Surface mounting box (783S and 789S options)
- 7000-108 - 1/8" spacer plate (783S and 789S options, black finish only)
- 154 - MTK Metal template kit
- 2001 - Plug-in bridge rectifier
- 2004 - ElectroLynx® adapter
- 2005 - SMART Pac II™
- 2006P - Plug-in buzzer
- 2009P - Plug-in LED

### Finishes (701 and 702 options only)

- 630 - Satin stainless steel finish
- 605 - Bright brass finish
- 606 - Satin brass finish
- 612 - Satin bronze finish
- 613C - Brown nylon powder coated finish
- 629 - Bright stainless steel finish
- BLK - Black finish

### Finishes (783S, 786S, and 789S options)

- 613C - Brown nylon powder coated finish
- 626 - Brushed chrome finish



### 701 Option

Operation: After releasing latchbolt the keeper returns to the locked position.



4-7/8" x 1-1/4"

701

#### For use with:

Cylindrical locksets up to 5/8" throw.  
ANSI/BHMA Numbers: #E09322, #E09323

type of lock released



### 702 Option

Operation: After releasing latchbolt the keeper returns to the locked position.



7-15/16" x 1-7/16"

702

#### For use with:

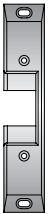
Cylindrical locksets up to 5/8" throw.  
ANSI/BHMA Numbers: #E09322, #E09323

type of lock released



### 783S Option

Operation: After releasing pullman latch, the keeper returns to the locked position.



9" x 1-3/4" x 11/16"

783S

#### For use with:

Rim exit devices in metal jambs with up to a 3/4" pullman latch.

#### Compatible Locksets:

American Device, Arrow, Doramatic, Monarch, Precision, Sargent, Von Duprin, Yale  
ANSI/BHMA Numbers: #E09312, #E09313

type of lock released



### 786S Option

Operation: After releasing pullman latch, the keeper returns to the locked position.



6-1/2" x 1-3/4" x 1/2"

786S

#### For use with:

Rim exit devices in aluminum jambs and surface mounted vertical rod exit devices with up to a 3/4" pullman latch.

#### Compatible Locksets:

American Device, Arrow, Doramatic, Jackson, Monarch, Precision, Sargent, Von Duprin, Yale  
ANSI/BHMA Numbers: #E09312, #E09313

type of lock released



### 789S Option

Operation: After releasing pullman latch, the keeper returns to the locked position.



9" x 1-3/4" x 1/2"

789S

#### For use with:

Rim exit devices in aluminum jambs with up to a 3/4" pullman latch. Includes keeper pocket adapter.

#### Compatible Locksets:

American Device, Arrow, Doramatic, Jackson, Monarch, Precision, Sargent, Von Duprin, Yale  
ANSI/BHMA Numbers: #E09312, #E09313

type of lock released

