

*This RF5010- EA includes an external antenna for location on inside or outside face of frame, in either inswing or outswing applications. We offer several types of faceplate options to accommodate your application. Faceplate options sold separately.*

shown with 501 option



## Sophisticated control with installation flexibility

Introducing the first-ever electric strike with an integrated proximity card reader. Combining the access control of an HID® Prox reader with the physical security of a Grade 1 electric strike, the RF5010-EA series encompasses everything in the frame for faster installation and superior aesthetics. Designed to work with any Weigand-compatible controller, the RF5010-EA features an external antenna, for flexible location in either inswing or outswing applications, and accommodates 5/8" latchbolts.

### Specifications

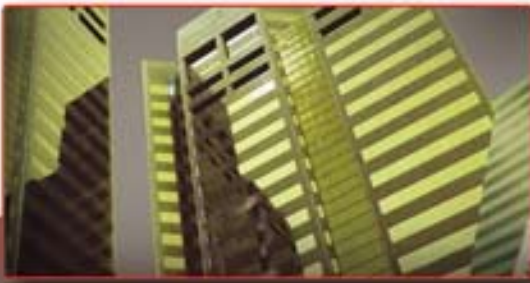
- ANSI/BHMA A156.31, Grade 1
- FCC Part 15 (USA and Canada)
- Patented and patent pending

### Frame application

- Steel
- Aluminum
- Wood

### Electrical

- Reader Module
  - 12 VDC (+/- 20%)
  - 124 mA Max. @ 12 VDC
- Electric Strike
  - 12 VDC (+/- 10%)
  - 240 mA Max. @ 12 VDC



# RF5010-EA

Hybrid electric strike

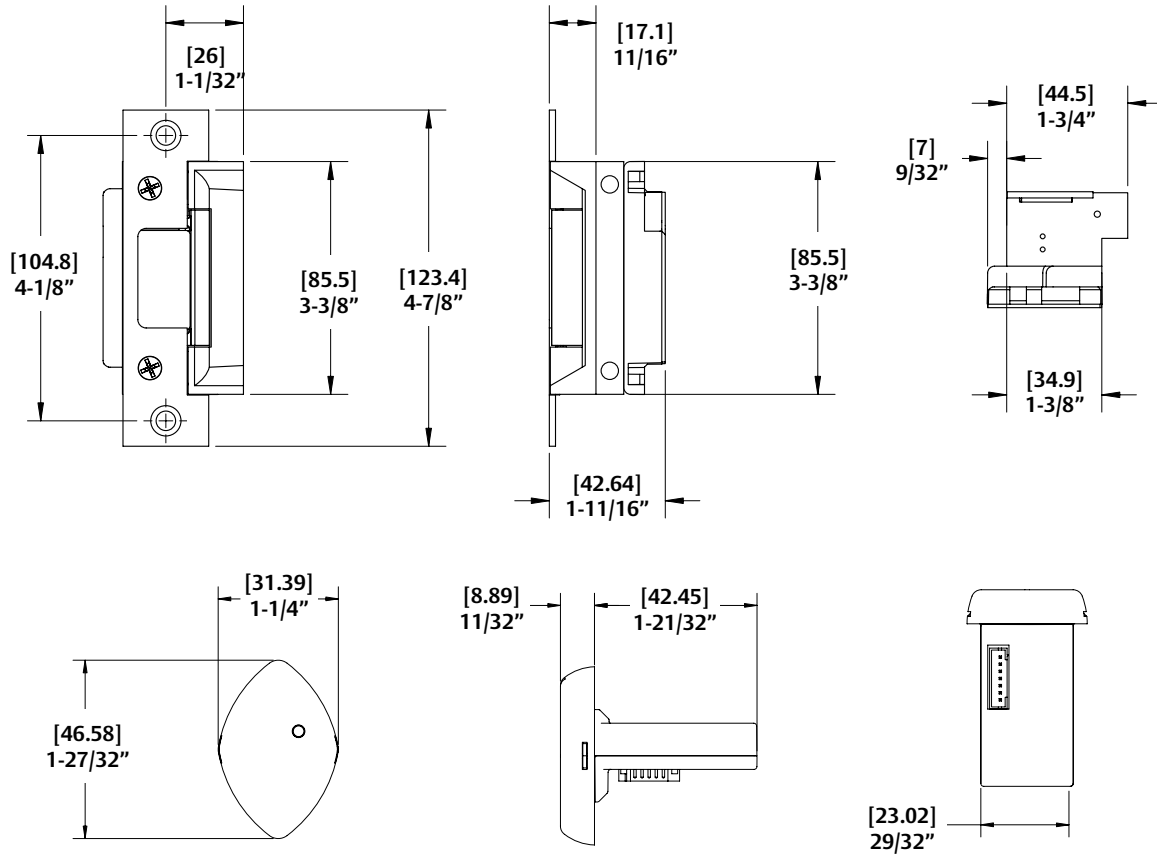


diagram shown with 501 option

## Cable

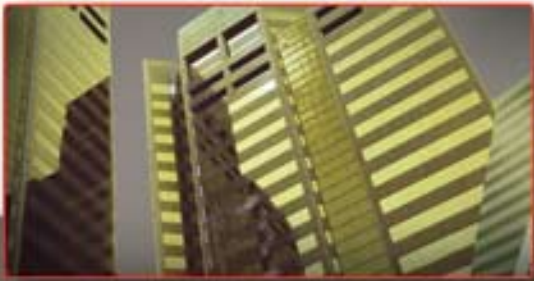
- 500 ft. max. distance to host
- 18-22 AWG recommended (stranded and shielded)

## Standard Features

- Integrated HID Proximity Card reader
- External antenna provides 24" of flexibility for location on inside or outside face of frame
- Interfaces with any Wiegand-compatible access control system
- Recognizes HID 26-39 bit formats
- Supports HID 125kHz credentials
- Non-handed and reversible
- Accommodates 1/2"-5/8" latchbolt (5/8" with 1/8" door gap)
- Includes door position switch, latchbolt monitor, LED and buzzer
- Appropriate for -32°F to 150°F (-35°C to 65°C) and 5-95% humidity (non-condensing)
- Lifetime limited warranty

## Finishes

- 630 - Satin stainless steel finish
- 605 - Bright brass finish
- 606 - Satin brass finish
- 612 - Satin bronze finish
- 613 - Bronze toned finish
- 629 - Bright stainless steel finish
- BLK - Black finish



# RF5010-EA

Hybrid series faceplate options



## 501 Option

Operation: After release, the keeper returns to the locked position.



4-7/8" x 1-1/4"

**501** **For use with:**  
Cylindrical locksets in ANSI metal jambs.  
ANSI/BHMA Numbers: #E09321, #E09322, #E09323

type of locks released



## 501A Option

Operation: After releasing the latchbolt, the keeper returns to the locked position.



4-7/8" x 1-1/4"

radius corners  
& flat faceplate

**501A** **For use with:**  
Cylindrical locksets. Includes universal mounting tabs. Aluminum frames.  
ANSI/BHMA Numbers: #E09321, #E09322, #E09323

type of locks released



## 501B Option

Operation: After releasing the latchbolt, the keeper returns to the locked position.



4-7/8" x 1-1/4"

radius corners  
& radius faceplate

**501B** **For use with:**  
Cylindrical locksets. Includes universal mounting tabs. Aluminum doors and frames with radiused front.  
ANSI/BHMA Numbers: #E09321, #E09322, #E09323

type of locks released



## 502 Option

Operation: After releasing the latchbolt, the keeper returns to the locked position.

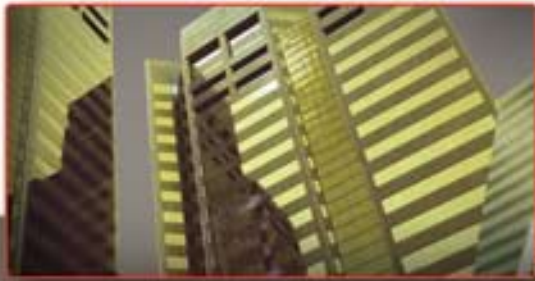


7-15/16" x 1-7/16"

**502** **For use with:**  
Cylindrical locksets. Includes universal mounting tabs. Aluminum frames.  
ANSI/BHMA Numbers: #E09321, #E09322, #E09323

type of locks released





# RF5010-EA

Hybrid series faceplate options



## 503 Option

Operation: After releasing the latchbolt, the keeper returns to the locked position.



6-7/8" x 1-1/4"  
radius corners  
& flat faceplate

**503**

**For use with:**

Cylindrical locksets. Includes universal mounting tabs.  
ANSI/BHMA Numbers: #E09321, #E09322, #E09323

type of locks  
released



## 503B Option

Operation: After releasing the latchbolt, the keeper returns to the locked position.



6-7/8" x 1-1/4"  
radius corners  
& radius faceplate

**503B**

**For use with:**

Cylindrical locksets. Faceplate is beveled. Includes universal mounting tabs.  
ANSI/BHMA Numbers: #E09321, #E09322, #E09323

type of locks  
released



## 504 Option

Operation: After releasing the latchbolt, the keeper returns to the locked position.



10" x 1-3/8"  
radius corners  
& flat faceplate

**504**

**For use with:**

Cylindrical locksets. Four point mounting for wood installations.  
ANSI/BHMA Numbers: #E09321, #E09322, #E09323

type of locks  
released

