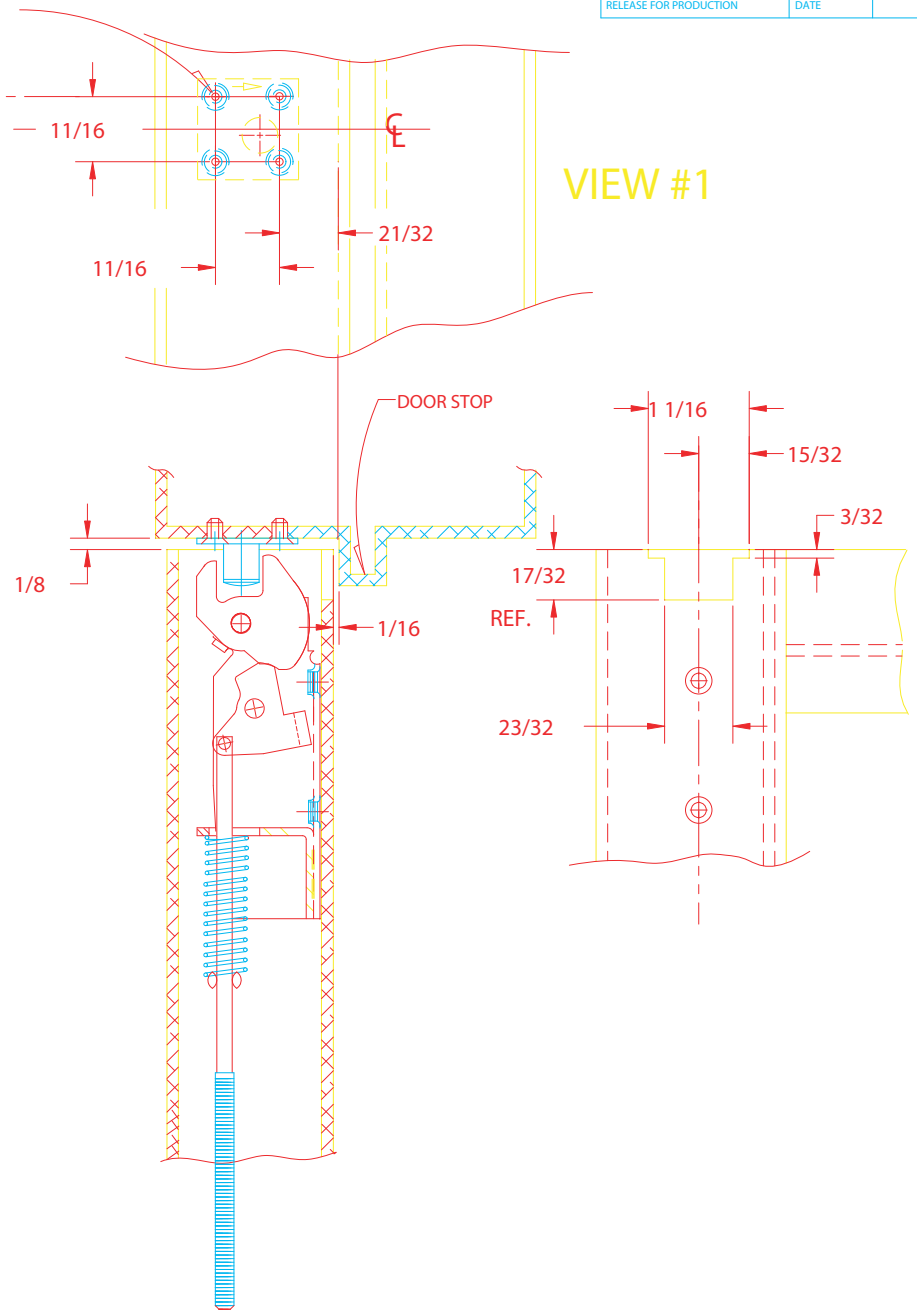


- 1 ARROW POINTING TOWARDS DOOR STOP.
- 2 DISTANCE 1/8 GREATER
- 3 DISTANCE 1/16 GREATER
- 4 DISTANCE 1/16 LESS

DRILL & TAP FOR 8-32 FHMS (UND) (4 PLACES)

OF-TOP LATCH



ROUTING AND INSTALLATION INSTRUCTIONS

1. PREPARE HEADER PER VIEW #1
2. POSITION STRIKE WITH ARROW AS SHOWN IN VIEW #1 AS A STARTING POINT.
3. ROTATE STRIKE TO INCREASE OR DECREASE GAP PER VIEWS 2, 3, OR 4
4. NOTE: 1/8 MAX. CLEARANCE BETWEEN DOOR AND HEADER MUST BE MAINTAINED IF GREATER, SHIM STRIKE TO MAINTAIN GAP.

DIMENSIONAL TOLERANCES UNLESS OTHERWISE SPECIFIED		APPROVALS	DATE
DECIMAL DIMENSIONS XX .010	+	APPROVED	
DECIMAL DIMENSIONS XXX .005	+	CHECKED	
ANGULAR ± °	FRACTIONAL ± 1/64	DRAWN	R.M. 8/12/96

FILE NO.	864
NEXT ASSY.	FINISH
QTY. USED	1

MATERIAL	SCALE
	NONE
HEAT TREAT	

INSTALLATION INSTR.
AJUSTABLE STRIKE
(2185/3185)



3447 UNION PACIFIC AVE.
LOS ANGELES, CALIF. 90023

SHEET OR SHEETS	1
DWG. NO.	10-864
REV.	A