



ROFU® ELECTRIC STRIKE MODEL 1402/3402

1402 AND 3402 - SERIES, WITH ANSI FACEPLATE 1¼" x 4⁷/₈"

MODEL 1402 — Fail - Secure (Non Fail - Safe)

MODEL 3402 — Fail - Safe

Electric strikes for use with mortise and cylindrical locksets.

For Commercial and Residential, New or Retrofit Uses

Standard Features



1402/3402
Non-Handed

- Anodized Aluminum ANSI size Faceplate
- Frame Type - Hollow Metal or Aluminum
- Corrosion - Resistant case and moving parts.
- Tamper Strength Test - 1400 lbs (635kg)
- Cycle Test 500,000 cycles
- Keeper Depth - **5/8"** Maximum Latch Projection possible with 1/8" Door/Frame Clearance - **3/4"**
- Strike Depth 1.50" Overall
- Reversible - Non Handed
- Limited Warranty - **36 Months**

Available in the following Voltages and Finishes:

Specify Finish xUS28, xUS10B or xUS4

Voltage, Fail Secure x01=8-16VAC/3-6VDC, x05=12VAC/12VDC, x08=24VAC/24VDC

Voltage, Fail Safe x06=12VDC, x09=24VDC

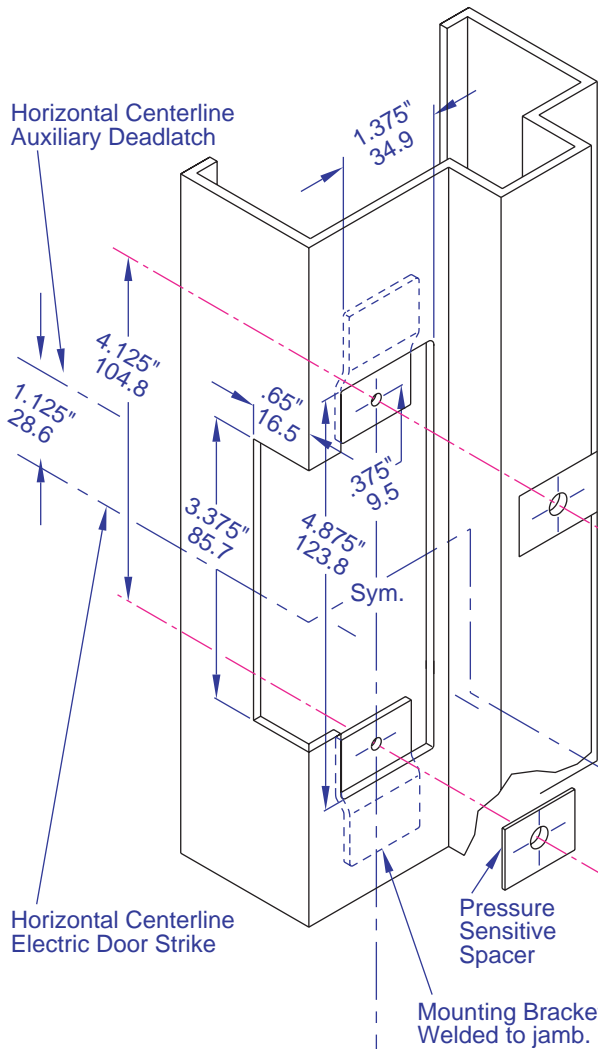
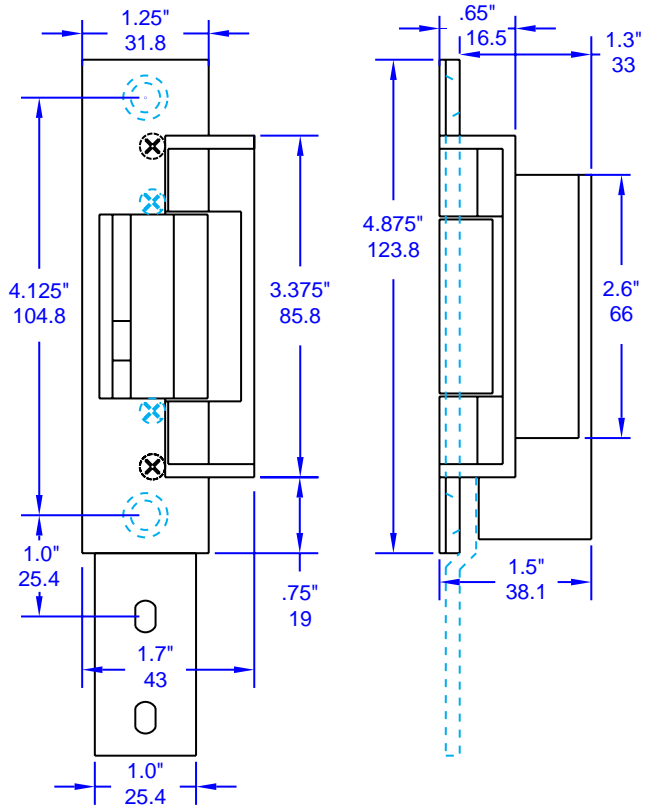
Optional Features:

- Adjustable Keeper (FAFIX), available for 3402 series. Specify FAFIX
- Radius Faceplate for Aluminum Jamb, Specify "RAD." See drawing page #46
- 2" Lip Extension, specify #10002. See page #108

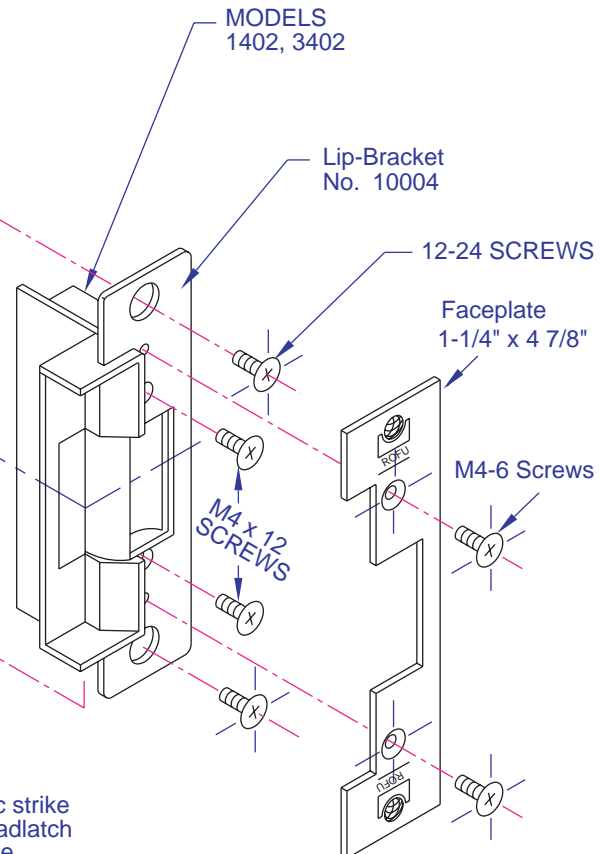


LINE ART FOR 1402/3402

**HOLLOW METAL JAMB PREPARATION
FOR ALUMINUM JAMB SEE PAGE
FOR RADIUS ALUMINUM JAMB SEE PAGE**



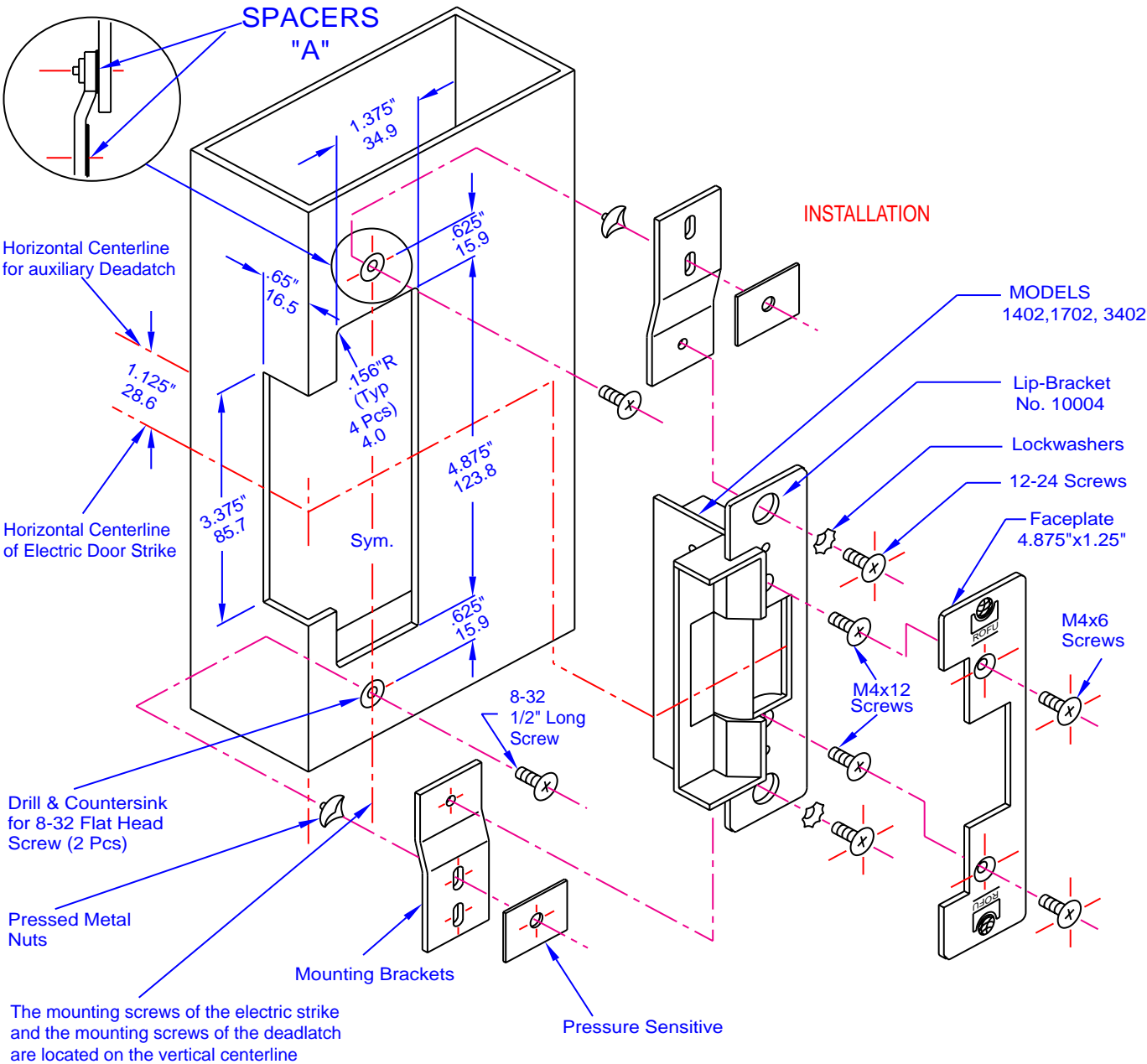
INSTALLATION



The mounting screws of the electric strike and the mounting screws of the deadlatch are located on the vertical centerline.

NOT TO SCALE - TECHNICAL DATA SUBJECT TO CHANGE WITHOUT NOTICE

**ALUMINUM JAMB PREPARATION
MODELS 1402, 3402 AND 1702**



**RADIUSED ALUMINUM JAMB PREPARATION
MODELS 1402, 3402 AND 1702**

