



ROFU® ELECTRIC STRIKE MODEL 1703

1703 - SERIES, FACEPLATE SIZE 1¼" x 6⅞"

MODEL 1703 — Fail - Secure (Non Fail - Safe)

Electric strikes for use with mortise and cylindrical locksets.

For Commercial and Residential, New or Retrofit Uses



1703
Non-Handed

Standard Features

- Anodized Aluminum Faceplate
- Frame Type - Hollow Metal or Aluminum
- Corrosion - Resistant case and moving parts.
- Tamper Strength Test - 1000 lbs (454kg)
- Cycle Test 500,000 cycles
- Keeper Depth - **1/2"** Maximum Latch Projection possible with 1/8" Door/Frame Clearance - **5/8"**
- Strike Depth 1.50" Overall
- Reversible - Non Handed
- Adjustable Keeper (FAFIX)
- Limited Warranty - **36 Months**

Available in the following Voltages and Finishes:

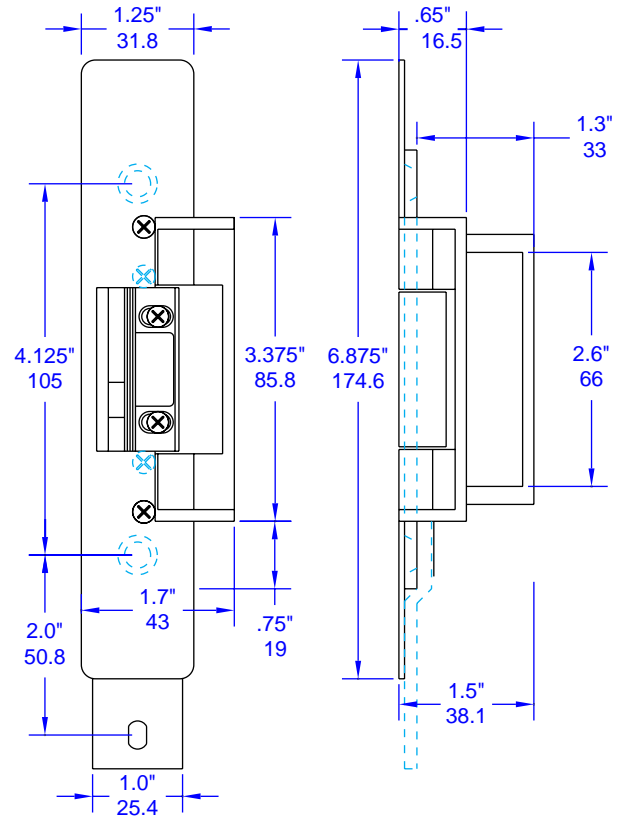
Specify Finish xUS28, US10B
Voltage, Fail Secure x01=8-16VAC/3-6VDC (Intermittent Duty)
 x04=12VAC/12VDC (Intermittent Duty)
 x05=12VDC (Continuous Duty)
 x07=24VAC/24VDC (Intermittent Duty)
 x08=24VDC (Continuous Duty)
 x14=48VAC/48VDC (Intermittent Duty)

Optional Features:

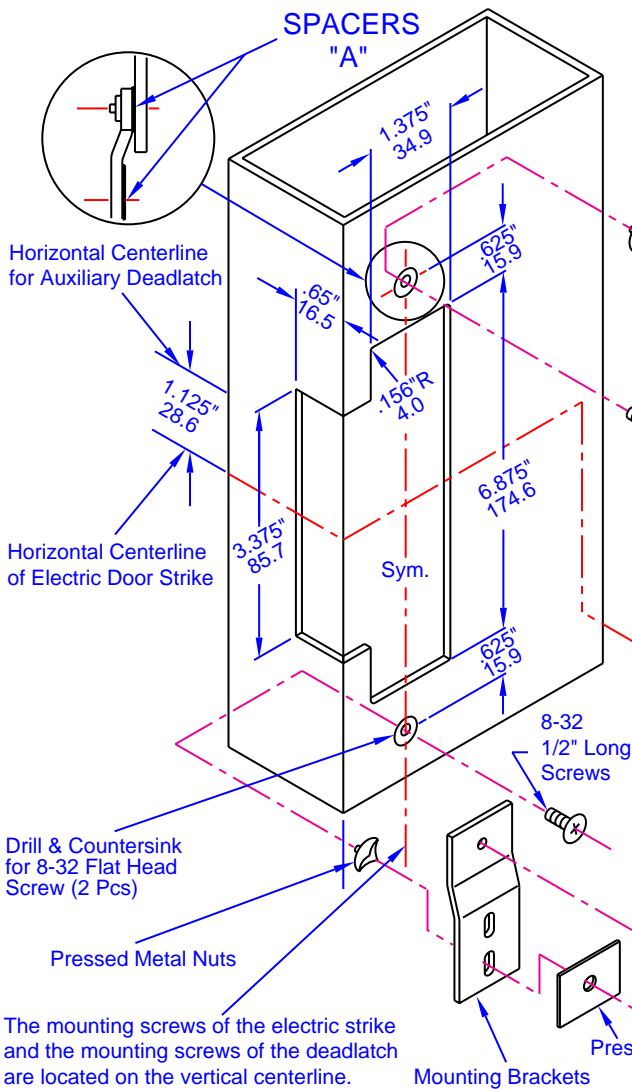
- Radius Faceplate for Aluminum Jamb, Specify "RAD."
- 2" Lip Extension, specify #10002.



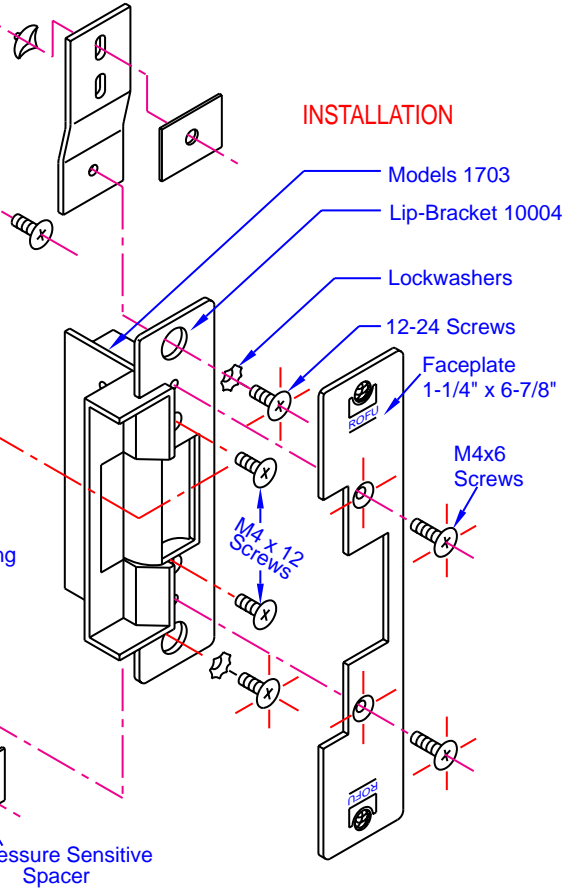
LINE ART FOR 1703



ALUMINUM JAMB PREPARATION



INSTALLATION



**RADIUSED ALUMINUM JAMB PREPARATION
MODELS 1403, 3403 AND 1703**

