

# Impossible?

An electric strike that requires up to  
70% less cutting of the frame face

An electric strike with a 1" total backset

An electric strike with a built-in trim plate

Meet Trine's all-new 3478 Electric Strike,  
newest member of the 3000 series.

- ◆ 1" backset allows for installation without removal of most dust boxes
- ◆ Standard operating voltages, 12VDC & 24VDC models, intermittent only
- ◆ LC Option: "All In One Voltage" model with range of 12V thru 24V - AC & DC, Intermittent or Continuous duty.  
Both electric strike and host controller are electrically protected.



Model No. 3478



Model No. 3234

## Impossible? Not any more!

CALL 718-829-2332 TODAY FOR COMPLETE INFORMATION.

**TRINE** <sup>TM</sup>  
ACCESS TECHNOLOGY

TRINE ACCESS TECHNOLOGY 1440 FERRIS PLACE BRONX, NY 10461-3699 FAX: 718-829-6405  
[www.trineonline.com](http://www.trineonline.com)

The smallest electric  
strike in the world.

# 3234 & 3478 Technical Information

## STANDARD FEATURES

- Holding Force 1200lbs
- Life Cycles 500,000
- Fail Secure
- Intermittent Duty
- All Stainless Steel
- Locking Mechanism

## ELECTRICAL CHARACTERISTICS

Voltage	Amps	Ohms	Leads	Sound
12VDC	.480	25	Blue	Silent
24VDC	.240	100	White	Silent
*12-24 AC/DC	.580	13	Red	Silent

\*Optional, "All In One Voltage" model. Intermittent & Continuous Duty

## FINISHES

- Bright Brass (US3)
- Satin Brass (US4)
- Dark Bronze - Powder Coated
- Satin Stainless Steel (US32D)
- Polished Chrome (US26)
- Satin Chrome (US26D)

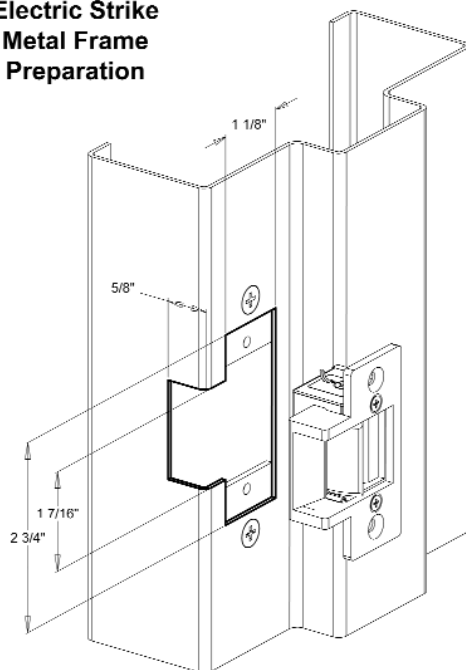
## 3234 - 3234W - 3478

◆	◆	◆
◆	◆	◆
◆	◆	◆
◆	◆	◆
◆	◆	◆
◆	◆	◆

## 3234 Metal Frame Preparation

### 3234

#### Electric Strike Metal Frame Preparation



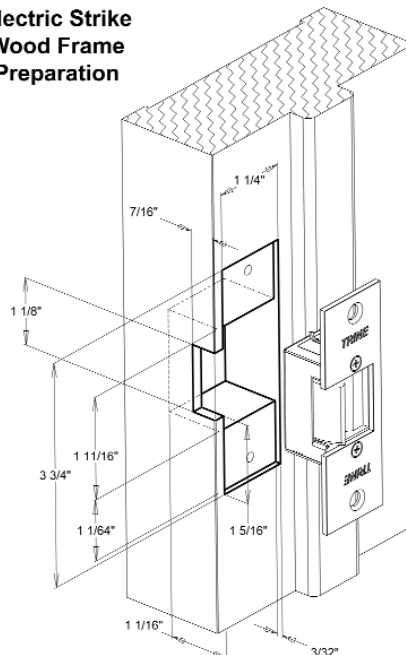
#### FACE PLATE 2-3/4" x 1-1/8"

Replaces the ANSI 115.3/18" T" Style 2-3/4" flat stock faceplate with little modification. Only the face of the frame need be modified for the 1-7/16" high and 5/8" deep lip extension. This requires a dremel or jig saw to extend the "T" cut around towards the face of the frame, for a 5/8" depth

## 3234W Wood Frame Preparation

### 3234W

#### Electric Strike Wood Frame Preparation



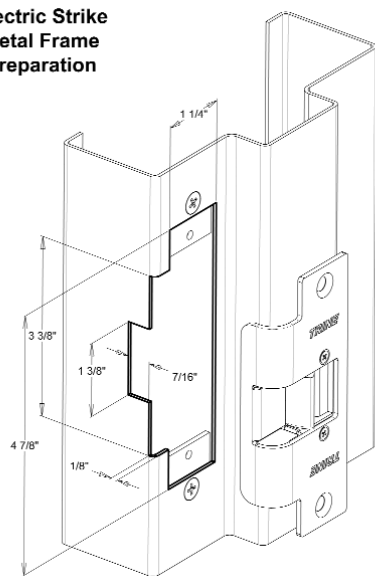
#### FACE PLATE 3-3/4" x 1-1/4"

Allows replacement of the standard 2-1/4" Full lip style faceplate that is common with the cylindrical locksets. The 3234W requires the addition of two bored holes, one above and one below the existing bored hole for, the lock set latch bolt. Using a 1" wood chisel, the mortise for the faceplate is enlarged to accomodate the 3-3/4" faceplate at a depth of 3/32"

## 3478 Metal Frame Preparation

### 3478

#### Electric Strike Metal Frame Preparation

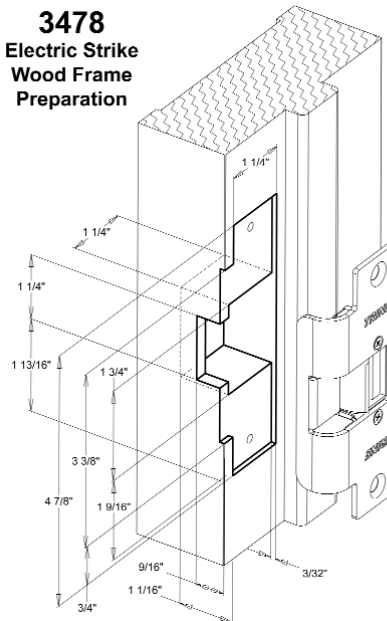


Replaces the ANSI 115.1 4-7/8 x 1-1/4 standard frame preparation. The 3478 requires that you cut 1-1/4" high and 7/16" deep into the face of the frame to mortise the flange for the 3-3/8" full lip extension. This can be accomplished with use of a Dremel tool or scoring and braking away for the 1-1/4" cut into the face of the frame. The surrounding dust shield functions as a guard from frame filler material entering the latch bolt path, while it travels to engage the electric strike keeper.

## 3478 Wood Frame Preparation

### 3478

#### Electric Strike Wood Frame Preparation



The 3478 will also accomodate installation in wood frame of 1-3/4" and 1-3/8" thicknesses. The need remains the same to cut the face of the frame for the 1-1/4" x 7/16" modification, to the standard ANSI 4-7/8 frame preparation. This will allow the latch bolt flange of faceplate to be mortised into the frame for a proper fit. The frame is also cut 1-1/4 x 2-1/4" to fit the mechanism. The installation would require the use of a 1" chisel and a small jab or jig saw to make the frame modification.