

**Table Of Contents**

<b>Flush Bolts</b>	page
FB31, FB32, FB33 Automatic Flush Bolt .....	C2
FB41, FB42 Automatic Flush Bolt .....	C3
FB51, FB52, FB53 Automatic Flush Bolt .....	C4
FB61, FB62 Constant Latching Flush Bolt .....	C5
261 Manual Flush Bolt .....	C6
262 Manual Flush Bolt.....	C6
265 Manual Flush Bolt.....	C7
FB358 Manual Flush Bolt.....	C8
FB457 Manual Flush Bolt.....	C9
FB458 Manual Flush Bolt.....	C10
DP1, DP2 Dust Proof Strike.....	C11
<b>Coordinators</b>	
COR Series Bar Coordinator .....	C12
FL Series Filler bar .....	C12
MB1, MB2 Mounting Brackets .....	C13
MB1F, MB2F, MB3F Mounting Brackets.....	C13
MB1V, MB2V, MB3V Mounting Brackets .....	C13
COR7G, CORG Gravity Coordinator .....	C14
CB1 Carry Bar .....	C14
How to order .....	C15
Special factory prep .....	C16



A  
Hinges & Pivots

B  
Pulls & Plates

C1  
Flush Bolts & Coordinators

D  
Latches, Catches & Bolts

E  
Stops

F  
Exterior Hardware

G  
Miscellaneous Hardware

A  
Hinges & Pivots

B  
Pulls & Plates

C2  
Flush Bolts & Coordinators

D  
Latches, Catches & Bolts

E  
Stops

F  
Exterior Hardware

G  
Miscellaneous Hardware



Meets ANSI A156.3 Type 25.  
UL Listed 3 Hour Fire Doors 8'0" x 10'0"

### FB31P Top and Bottom Bolts (Pair)

- Fully Automatic—inactive door is latched, bolts are extended when active door closes, door is unlatched, bolts retract when active door is opened.
- Low Actuation Forces—Top Bolt Has No Spring Tension.
- Fits standard ANSI A115.4 Door Frame Preparations.
- Non-handed.
- Bolt throw is 3/4" with a 7/8" vertical adjustment.
- Bolt backset is 3/4"
- Standard Rod Length is 12", which is measured from the center of the flush bolt body to the bolt tip. Optional rod lengths available for top bolt only on non-fire rated openings—18", 24", 36" and 48."

*DP1 or DP2 optional dust proof strike available, see page C11.*

### FB31T Top Bolt Only FB31B Bottom Bolt Only

### FB32 Top Bolt with Auxiliary Fire Latch

- FB32 Model with Auxiliary Fire Latch eliminates the bottom bolt and is UL Listed for Fire Doors.

### FB33 Top Bolt with Auxiliary Fire Latch and Retrofit Plate

- FB33 Model with Auxiliary Fire Latch eliminates the bottom bolt and includes a retrofit plate to cover existing bottom bolt prep. UL Listed for Fire Doors.



Meets ANSI A156.3 Type 25.  
UL Listed 3 Hour Fire Doors 8'0" x 8'0"

### Dimensions

Body Size: 1" Wide x 6-3/4" Long x 2" Deep

Guide Size: 1" Wide x 1-27/32" Long x 27/32" High x 3/32" Thick

Strike Size: 15/16" Wide x 2-1/4" Long x 1/16" Thick

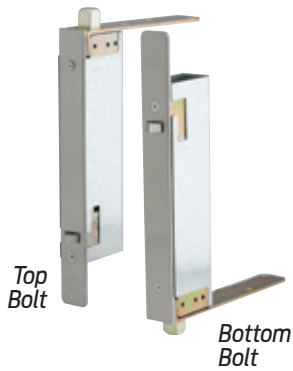
Rub Plate Size: 1-1/4" Wide x 1-11/16" Long x 3/64" Thick

Auxiliary Fire Latch Size: 1" Wide x 1-3/4" Long x 3-1/4" Deep

Retrofit Plate Size: 1" Wide x 6-3/4" Long x 3/32" Thick

### Finishes

Ives Number	US3	US4	US10	US10B	US32	US32D
BHMA	605	606	612	613	629	630



Meets ANSI A156.3 Type 25.  
UL Listed 90 Minute Fire Doors 8'0" x 8'0"

**FB41P Top and Bottom Bolts (Pair)**

- Fully Automatic—inactive door is latched, bolts are extended when active door closes, door is unlatched bolts retract when active door is opened.
- Low Actuation Forces—Top Bolt Has No Spring Tension.
- Non-handed.
- Bolt throw is 3/4" with a 7/8" vertical adjustment.
- Bolt backset is 3/4"

*DP1 or DP2 optional dust proof strike available, see page C11.*

**FB41T Top Bolt Only**  
**FB41B Bottom Bolt Only**

**FB42 Top Bolt with Auxiliary Fire Latch**

- FB42 Model with Auxiliary Fire Latch eliminates the bottom bolt and is UL Listed for Fire Doors.



Meets ANSI A156.3 Type 25.  
UL Listed 20 Minute Fire Doors 8'0" x 8'0"

**Dimensions**

Body Size: 1" Wide x 8-1/2" Long x 2" Deep

Guide Size: 1" Wide x 6" Long x 1/8" Thick

Strike Size: 15/16" Wide x 2-1/4" Long x 1/16" Thick

Rub Plate Size: 1-1/4" Wide x 1-11/16" Long x 3/64" Thick

Auxiliary Fire Latch Size: 1" Wide x 1-3/4" Long x 3-1/4" Deep

**Finishes**

Ives Number	US3	US4	US10	US10B	US32	US32D
BHMA	605	606	612	613	629	630

Hinges & Pivots  
**A**

Pulls & Plates  
**B**

Flush Bolts & Coordinators  
**C3**

Latches, Catches & Bolts  
**D**

Stops  
**E**

Exterior Hardware  
**F**

Miscellaneous Hardware  
**G**

A  
Hinges & Pivots

B  
Pulls & Plates

C4  
Flush Bolts & Coordinators

D  
Latches, Catches & Bolts

E  
Stops

F  
Exterior Hardware

G  
Miscellaneous Hardware



Meets ANSI A156.3 Type 27.  
UL Listed 3 Hour Fire Doors 8'0" x 10'0"

### FB51P Top and Bottom Bolts (Pair)

- Constant Latching—inactive door remains latched until the active door is opened, releasing the automatic bottom bolt and then the top bolt can be manually released. Inactive door will relatch automatically when closed.
- Low Actuation Forces.
- Fits standard ANSI A115.4 Door and Frame Preparations.
- Non-handed.
- 3/4" bolt throw with a 7/8" vertical adjustment.
- 3/4" backset
- Standard Rod Length is 12", which is measured from the center of the flush bolt body to the bolt tip. Optional rod lengths available for top bolt only on non-fire rated openings—18", 24", 36" and 48".

*DP1 or DP2 optional dust proof strike available, see page C11.*

### FB51T Top Bolt Only

### FB52 Top Bolt with Auxiliary Fire Latch

- FB52 Model with Auxiliary Fire Latch eliminates the bottom bolt and is UL Listed for Fire Doors.

### FB53 Top Bolt with Auxiliary Fire Latch & Retrofit Plate

- FB53 Model with Auxiliary Fire Latch eliminates the bottom bolt and includes a retrofit plate to cover existing bottom bolt prep. UL Listed for Fire Doors.



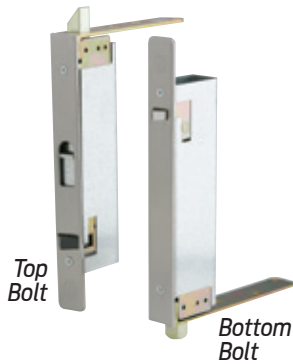
Meets ANSI A156.3 Type 27.  
UL Listed 3 Hour Fire Doors 8'0" x 10'0"

### Dimensions

- Body Size: 1" Wide x 6-3/4" Long x 2" Deep
- Guide Size: 1" Wide x 1-27/32" Long x 11/16" High x 3/32" Thick
- Strike Size: 15/16" Wide x 2-1/4" Long x 1/16" Thick
- Rub Plate Size: 1-1/4" Wide x 1-11/16" Long x 3/64" Thick
- Auxiliary Fire Latch Size: 1" Wide x 1-3/4" Long x 3-1/4" Deep
- Retrofit Plate Size: 1" Wide x 6-3/4" Long x 3/32" Thick

### Finishes

Ives Number	US3	US4	US10	US10B	US32	US32D
BHMA	605	606	612	613	629	630



Meets ANSI A156.3 Type 27.  
UL Listed 90 Minute Fire Doors 8'0" x 8'0"

**FB61P Top and Bottom Bolts (Pair)**

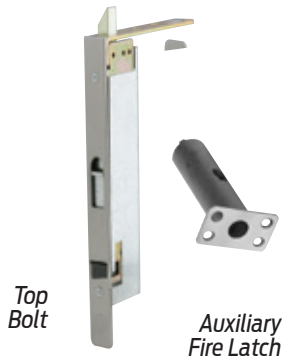
- Constant Latching—inactive door remains latched until the active door is opened, releasing the automatic bottom bolt and then the top bolt can be manually released. Inactive door will relatch automatically when door closes.
- Low Actuation Forces.
- Non-handed.
- Bolt throw is 3/4" with a 7/8" vertical adjustment.
- Bolt backset is 3/4"

*DP1 or DP2 optional dust proof strike available, see page C11.*

**FB61T Top Bolt Only**

**FB62 Top Bolt with Auxiliary Fire Latch**

- FB62 Model with Auxiliary Fire Latch eliminates the bottom bolt and is UL Listed for Fire Doors..



Meets ANSI A156.3 Type 27.  
UL Listed 20 Minute Fire Doors 8'0" x 8'0"

**Dimensions**

Body Size: 1" Wide x 8-1/2" Long x 2" Deep

Guide Size: 1" Wide x 6" Long x 1/8" Thick

Strike Size: 15/16" Wide x 2-1/4" Long x 1/16" Thick

Rub Plate Size: 1-1/4" Wide x 1-11/16" Long x 3/64" Thick

Auxiliary Fire Latch Size: 1" Wide x 1-3/4" Long x 3-1/4" Deep

**Finishes**

Ives Number	US3	US4	US10	US10B	US32	US32D
BHMA	605	606	612	613	629	630

Hinges & Pivots  
**A**

Pulls & Plates  
**B**

Flush Bolts & Coordinators  
**C5**

Latches, Catches & Bolts  
**D**

Stops  
**E**

Exterior Hardware  
**F**

Miscellaneous Hardware  
**G**

**A**  
Hinges & Pivots

**B**  
Pulls & Plates

**C6**  
Flush Bolts & Coordinators

**D**  
Latches, Catches & Bolts

**E**  
Stops

**F**  
Exterior Hardware

**G**  
Miscellaneous Hardware



Meets ANSI/BHMA A156.16, L04201.

### 261 Flush Bolt

- An exceptionally smooth working flush bolt with sharp, crisp lines.
- Double action spring design provides automatic holding of brass bolt in projected or retracted position, and assures ease of operation in conjunction with deep cup finger hole.
- Made from polished cast brass.
- Bolt tip is 5/16" Diameter
- Bolt throw is 3/4"
- Bolt backset is 15/32"

#### Dimensions

Body Size: 3/4" Wide x 4" Long x 1-1/8" Deep

Strike Size: 5/8" Wide x 1-1/2" Long

#### Finishes

Ives Number	B3	B5	B10B	B15	B26	B26D
BHMA	605	609	613	619	625	626



Meets ANSI/BHMA A156.16, L04201.

### 262 Flush Bolt

- An exceptionally smooth working flush bolt with sharp, crisp lines.
- Double action spring design provides automatic holding of brass bolt in projected or retracted position, and assures ease of operation in conjunction with deep cup finger hole.
- Made from polished cast brass.
- Bolt tip is 1/2" Diameter
- Bolt throw is 1"
- Bolt backset is 15/32"

#### Dimensions

Body Size: 3/4" W x 6" L x 1-11/32" D

Strike Size: 7/8" W x 1-3/4" L

#### Finishes

Ives Number	B3	B5	B10B	B15	B26	B26D
BHMA	605	609	613	619	625	626



Meets ANSI/BHMA A156.16, L04201.

**265 Flush Bolt**

- A flush bolt with radiused bottom faceplate designed specifically for simple one-step router installation.
- Double action spring design provides automatic holding of brass bolt in projected or retracted position, and assures ease of operation in conjunction with deep cup finger hole.
- Faceplate is polished solid brass; bolt is made from aluminum zinc alloy.
- Bolt tip is 1/2" Diameter
- Bolt throw is 1"
- Bolt backset is 1/2"

**Dimensions**

Body Size: 3/4" W x 6" L x 1-7/16" D

Strike Size: 7/8" W x 1-3/4" L

**Finishes**

Ives Number	B3	B5	B10B	B15	B26	B26D
BHMA	605	609	613	619	625	626

A  
Hinges & Pivots

B  
Pulls & Plates

C7  
Flush Bolts & Coordinators

D  
Latches, Catches & Bolts

E  
Stops

F  
Exterior Hardware

G  
Miscellaneous Hardware



Meets ANSI/BHMA A156.16, L04261.  
UL Listed 90 Minute Fire Doors 8'0" x 10'0"

### FB358 Top or Bottom Bolts

- When the active door is opened, the lever can be moved to the 'up' position, retracting the bolt and allowing the inactive leaf to be opened. When the inactive leaf is closed, the lever can be moved to the 'down' position, projecting the bolt into the strike and securely locking the inactive leaf.
- Reduces installation costs; requires only simple router mortise at top and bottom corners of doors.
- Door strength and rigidity maintained by tying door faces to reinforcing extensions on guide with machine screws and bearing washers, not supplied.
- Non-handed.
- Bolt tip 1/2" diameter
- Bolt throw is 3/4" with a 7/8" vertical adjustment.
- Bolt backset is 3/4"
- Not available for rabbeted door installations.

*DP1 or DP2 optional dust proof strike available, see page C 11.*

### Dimensions

Body Size: 1" Wide x 6-3/4" Long x 1-3/8" Deep

Guide Size: 1" Wide x 2-1/2" Long x 5/64" Thick

Strike Size: 15/16" Wide x 2-1/4" Long x 5/64" Thick

### Finishes

Ives Number	US3	US4	US10	US10B	US15	US26	US26D
BHMA	605	606	612	613	619	625	626

**A**  
Hinges & Pivots

**B**  
Pulls & Plates

**C8**  
Flush Bolts & Coordinators

**D**  
Latches, Catches & Bolts

**E**  
Stops

**F**  
Exterior Hardware

**G**  
Miscellaneous Hardware





Meets ANSI/BHMA A156.16, L04251.  
UL Listed 3 Hour Fire Doors 8'0" x 10'0"

**FB457 Top or Bottom Bolts**

- When the active door is opened, the lever can be moved to the 'up' position, retracting the bolt and allowing the inactive leaf to be opened. When the inactive leaf is closed, the lever can be moved to the 'down' position, projecting the bolt into the strike and securely locking the inactive leaf.
- Simplified installation in metal frames. Round bolt head requires only a punched hole. Use of strike optional. Special design of guide and flat sided bolt tip to prevent bolt rotation.
- Non-handed.
- Bolt tip is 1/2" Diameter.
- Bolt throw is 3/4" with a 7/8" vertical adjustment.
- Bolt backset is 3/4"
- Standard Rod Length is 12", which is measured from the center of the flush bolt body to the bolt tip. Optional rod lengths available - 6", 9", 18" and 24" for fire rated doors. Optional rod lengths available - 6", 9", 18", 24", 30", 36" and 48" for non-fire rated doors.

*DP1 or DP2 optional dust proof strike available, see page C11.*

**Dimensions**

Body Size: 1-1/4" Wide x 6-3/4" Long x 1-1/8" Deep

Guide Size: 1" Wide x 2" Long x 5/64" Thick

Strike Size: 15/16" Wide x 2-1/4" Long x 5/64" Thick

**Finishes**

Ives Number	US3	US4	US10	US10B	US15	US26	US26D
BHMA	605	606	612	613	619	625	626

A  
Hinges & Pivots

B  
Pulls & Plates

C9  
Flush Bolts & Coordinators

D  
Latches, Catches & Bolts

E  
Stops

F  
Exterior Hardware

G  
Miscellaneous Hardware

**A**  
Hinges & Pivots

**B**  
Pulls & Plates

**C10**  
Flush Bolts & Coordinators

**D**  
Latches, Catches & Bolts

**E**  
Stops

**F**  
Exterior Hardware

**G**  
Miscellaneous Hardware



Meets ANSI/BHMA A156.16, L04251.  
UL Listed 90 Minute Fire Doors 8'0" x 10'0"

### FB458 Top or Bottom Bolts

- When the active door is opened, the lever can be moved to the 'up' position, retracting the bolt and allowing the inactive leaf to be opened. When the inactive leaf is closed, the lever can be moved to the 'down' position, projecting the bolt into the strike and securely locking the inactive leaf.
- Simplified installation in metal frames. Round bolt head requires only a punched hole. Use of strike optional. Special design of guide and flat sided bolt tip to prevent bolt rotation.
- Non-handed.
- Bolt tip is 1/2" diameter.
- Bolt throw is 3/4" with a 7/8" vertical adjustment.
- Bolt backset is 3/4"
- Standard Rod Length is 12", which is measured from the center of the flush bolt body to the bolt tip. Optional Rod Lengths available - 6", 9", 18" and 24" for fire rated Doors. Optional Rod lengths available - 6", 9", 18", 24", 30", 36" and 48" for non-fire rated doors.

*DPI or DP2 optional dust proof strike available, see page C11.*

### Dimensions

Body Size: 1" Wide x 6-3/4" Long x 1-1/8" Deep

Guide Size: 1" Wide x 2" Long x 5/64" Thick

Strike Size: 15/16" Wide x 2-1/4" Long x 5/64" Thick

### Finishes

Ives Number	US3	US4	US5	US10	US10B	US15	US26	US26D
BHMA	605	606	609	612	613	619	625	626



DP1



DP2

Meets Meets ANSI/BHMA 156.16, L14011.

**DP1  
DP2 Dust Proof Strikes**

- Designed for use with the bottom bolt of all flush bolts.
- Spring-loaded plunger returns to floor or threshold level anytime flush bolt is retracted, eliminating need to clean standard floor strikes.
- Strike hole is 3/4" Diameter and 1-1/8" Deep

**Dimensions**

DP1 Face Plate: 1-7/16" Diameter

DP2 Face Plate: 1-5/8" W x 3-1/2" L x 1/8" Thick

Body: 1-3/16" Diameter x 1-7/8" Deep

**Finishes**

Ives Number	US3	US4	US10	US10B	US26	US26D
BHMA	605	606	612	613	625	626

A  
Hinges & Pivots

B  
Pulls & Plates

C11  
Flush Bolts & Coordinators

D  
Latches, Catches & Bolts

E  
Stops

F  
Exterior Hardware

G  
Miscellaneous Hardware

**A**  
Hinges & Pivots

**B**  
Pulls & Plates

**C12**  
Flush Bolts & Coordinators

**D**  
Latches, Catches & Bolts

**E**  
Stops

**F**  
Exterior Hardware

**G**  
Miscellaneous Hardware



Meets ANSI/BHMA A156.3, Type 21A.  
UL Listed for installation on labeled frame.

### COR Series Bar Coordinators

#### For Openings Where Doors Are Same Size

Coordinator Number	Length of Channel	For Opening Widths	Common Applications
COR32	32"	34" - 52"	Pair of 2'0" Doors
COR42	42"	52" - 72"	Pair of 2'6" Doors
COR52	52"	62" - 92"	Pair of 3'0" Doors
COR60	60"	70" - 108"	Pair of 3'6" Doors
COR72	72"	84" - 132"	Pair of 4'0" Doors

#### For Openings Where Doors Are Unequal Size

The coordinator length should equal the active door width plus approximately 1/2 the inactive door width. The coordinator must be 6" longer than the active door width and shorter than the overall frame opening between stops.

- The COR Series Coordinators are designed for use on pairs of doors when one door needs to close before the other.
- All COR units function easily. The active door lever, located nearest to the active stop, holds the active door open until the trigger mechanism is released by the closing of the inactive leaf.
- All COR units may not function correctly with swingclear hinges.
- All COR units are equipped with an adjustable override feature which allows the active door to close under extreme pressure.
- All COR units are compatible with Flush Bolts.
- The COR Series is available in five sizes for variable door opening widths.
- The COR Series does not cover the entire length of the stop, so a FL filler bar can be provided to maintain architecturally clean lines.
- COR Series Coordinator Channels and FL fillers are made of aluminum.
- Optional Filler Bars: FL20 - 20", FL32 - 32" and FL44 - 44", available to maintain clean line.
- Optional Mounting Brackets available: MB1, MB2, MB1F, MB2F, MB3F, MB1V, MB2V, and MB3V for other stop applied hardware.

#### Finishes

Ives Finish	US28	US26D	315AN
BHMA	628	713	711



### FL Series Filler Bars

- The FL Filler Bars are available in three sizes for variable frame openings.
- FL Filler Bars are made of aluminum
- FL Filler Bars are field sized to frame opening.

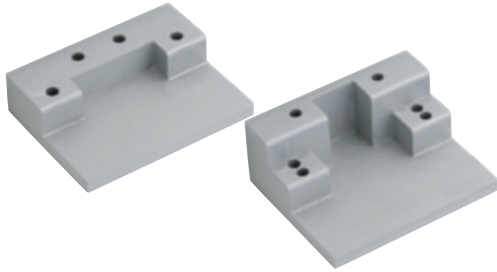
#### Filler Bar

Filler Bar Number	Length	Dimensions
FL20	20"	1-5/8" W x 5/8" D x 20" L
FL32	32"	1-5/8" W x 5/8" D x 32" L
FL44	44"	1-5/8" W x 5/8" D x 44" L

#### Finishes

Ives Finish	US28	US26D	315AN
BHMA	628	713	711

## MB1 and MB2



## Mounting Brackets

- Allows stop mounted hardware to be properly installed without damaging the COR coordinator, such as a parallel arm closer or a non-fire-rated surface vertical rod strike.
- Stop mounted hardware will need to be lowered to compensate for the height of the coordinator and mounting bracket.
- MB mounting brackets are made of aluminum

Product	Jamb Depth	Stop Width	Dimensions
MB1	4-3/4" Min.	Over 2-1/2"	4" W x 3" D x 15/16" T
MB2	4-3/4" Min.	Up to 2-1/2"	4" W x 3-1/4" D x 1-5/8" T

### Finishes

Ives Finish	USP	SP28	SPBLK
BHMA	600	689	622

## MB1F, MB2F and MB3F MB1V, MB2V and MB3V



MB1V

MB2V



MB3V

## Fire Rated Mounting Brackets

- Allows for fire-rated stop mounted hardware to be properly installed without damaging the COR Coordinators, such as fire-rated surface vertical rod exit device strikes.
- Latch will need to be lowered to compensate for the height of the coordinator and mounting bracket.
- MB-V are designed for Von Duprin 8827-F soffit latch.
- Mounting brackets are made of steel.

Product	Jamb Depth	Stop Width	Dimensions
MB1F	5"	1-1/2" - 2-1/4"	4" W x 3" D x 1-5/8" T
MB1V	5"	1-1/2" - 2-1/4"	4" W x 3" D x 1-5/8" T
MB2F	5-7/8"	2-3/8" - 3-1/4"	4" W x 4" D x 1-5/8" T
MB2V	5-7/8"	2-3/8" - 3-1/4"	4" W x 4" D x 1-5/8" T
MB3F	6-7/8"	Over 3-3/8"	4" W x 3-1/2" D x 1" T
MB3V	6-7/8"	Over 3-3/8"	4" W x 3-1/2" D x 1" T

### Finishes

Ives Finish	USP	SP28	SPBLK
BHMA	600	689	622

A  
Hinges & Pivots

B  
Pulls & Plates

C13  
Flush Bolts & Coordinators

D  
Latches, Catches & Bolts

E  
Stops

F  
Exterior Hardware

G  
Miscellaneous Hardware

A Hinges & Pivots

B Pulls & Plates

C14 Flush Bolts & Coordinators

D Latches, Catches & Bolts

E Stops

F Exterior Hardware

G Miscellaneous Hardware

### COR7G and COR9G



Meets ANSI/BHMA A156.3, Type 21.  
UL Listed for Fire Doors.

### Gravity Coordinators

- When active door is open, coordinator prevents active door from closing until inactive door bypasses. Closing of inactive door causes strike plate on top of door to contact cam and lift arm, allowing active door to close. As inactive door continues closing, roller rides over strike plate on to door bracket, holding arm above active door.
- Non-handed.
- Gravity action arm and door bracket are adjustable on the job for ease of installation. Rubber roller provides quiet and efficient operation, and helps protect the astragal and doors from damage.
- Nylon roller on short arm glides smoothly over door bracket and strike, ensuring silent operation.
- Made of forged brass.
- COR7G for use on pairs of doors with astragal on active door up to 4' or with astragal on inactive door up to 3'4" or with astragal on both doors up to 2'10"
- COR9G for use on pairs of doors with astragal on active over 4' or with astragal on inactive door over 3'4" or with astragal on both doors over 2'10"

Product	Projection
COR7G	7"
COR9G	9"

#### Finishes

Ives Finish	US3	US4	US10	US10B	US26	US26D
BHMA	605	606	612	613	625	626



Meets ANSI/BHMA A156.3, Type 21.

### CB1 Carry Bar

- Used when it is possible for the inactive door to be opened before the active door.
- Prevents damage to the doors and other hardware.
- Nylon roller insures quiet and efficient operation.
- Non-handed.
- All-steel construction.
- Standard sex bolts for mounting.

#### Finishes

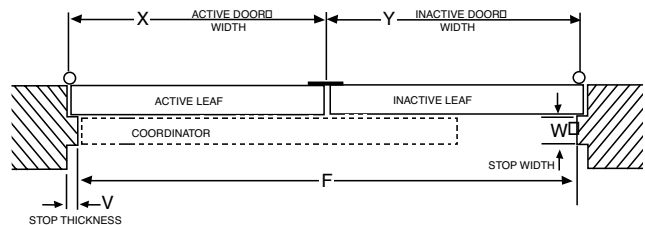
Ives Finish	US3	US4	US10	US10B	US26	US26D	SPBLK	USP
BHMA	605	606	612	613	625	626	622	600

## How to Order COR and Accessories

<b>COR</b>	<b>52</b>	<b>US28</b>	<b>FL20</b>	<b>D</b>	<b>36"</b>
<p><b>COR Size:</b> 32, 42, 52, 60, 72</p>					
<p><b>Finishes:</b> US28, US26D, 315AN</p>					
<p><b>Filler Bar (if desired):</b> FL20, FL32, FL44</p>					
<p><b>Vertical Rod Exit Device Cutout Type (if applicable):</b> A, B, C, D, E, F, G If other Vertical Rod Exit Device not listed on chart, from page C16, include information as shown on page C16.</p>					
<p><b>Active Door Size – Required for ALL Vertical Rod Exit Device Applications</b></p>					

### To determine the size COR you need:

1. Start with the active door width (X).
2. Next consider the overall frame opening between stops (F).
3. Preferably, the coordinator would equal the active door width (X) + approximately 1/2 inactive door width (Y).  
The coordinator must be 6" longer than the active door width (X) and less than the overall frame opening between stop (F).



### Examples:

- Pair of 30" Doors, 5/8" Stops  
Active Door Size, X = 30"  
Overall Frame Opening between Stops, F = 58-3/4"  
Recommended Coordinator: COR42
- Pair of 36" Doors, 5/8" Stops  
Active Door Size, X = 36"  
Overall Frame Opening between Stops, F = 70-3/4"  
Recommended Coordinator: COR52
- 36" Active Door, 18" Inactive door, 5/8" Stops  
Active Door Size, X = 36"  
Overall Frame Opening between Stops, F = 52-3/4"  
Recommended Coordinator: COR42
- 48" Active Door, 24" Inactive Door, 5/8" Stops  
Active Door Size, X = 48"  
Overall Frame Opening between Stops, F = 94-3/4"  
Recommended Coordinator: COR60

A  
Hinges & Pivots

B  
Pulls & Plates

C15  
Flush Bolts & Coordinators

D  
Latches, Catchers & Bolts

E  
Stops

F  
Exterior Hardware

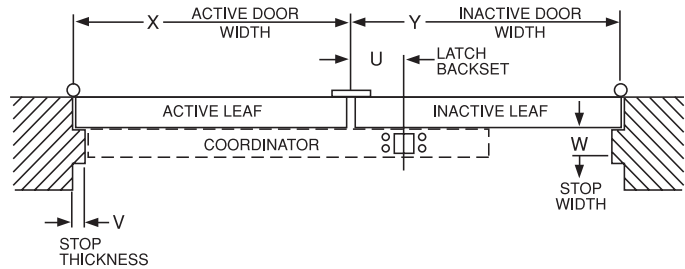
G  
Miscellaneous Hardware

## Special Factory Preparation for Use with Vertical Rod Exit Devices

Coordinators may need to be prepared at the factory for use with some surface or concealed vertical rod exit devices. (See Chart below)

### If the exit device is not listed the following information is needed.

1. Exit Device Manufacturer and Model No.
2. Active Door Size, "X"
3. Inactive Door Size, "Y"
4. Exit Device Backset, "U"
5. Stop Width, "W"
6. Stop Thickness if other than 5/8", "V"



Exit Device Manufacturer	Exit Device Number	Device Backset	Maximum Active Door	Coordinator Size Needed	Coordinator Cutout Type	Mounting Bracket Needed
Von Duprin	5547-F	2-3/8"	33" 43" 51" 63"	42" 52" 60" 72"	Type A	None
Von Duprin	8827-F	2-3/4"	33" 43" 51" 63"	42" 52" 60" 72"	Type B	MB1V, MB2V or MB3V see page C3
Von Duprin	8847-F	2-3/8"	33" 43" 51" 63"	42" 52" 60" 72"	Type C	None
Von Duprin	33/3547 33/3547-F 98/9947 98/9947-F	2-3/4"	33" 43" 51" 64"	42" 52" 60" 72"	Type D	None
Von Duprin	33/3548 33/3548-F 98/9948 98/9948-F	2-3/4"	33" 43" 51" 64"	42" 52" 60" 72"	Type D	None
Von Duprin	33/3547WDC 33/3547WDC-F 98/9947WDC 98/9947WDC-F	1-5/16"	34" 44" 52" 65"	42" 52" 60" 72"	Type E	None
Falcon	17-C F-17-C 18-C F-18-C XX-C F-XX-C 24-C F-24-C 25-C F-25-C	2-3/4"	33" 43" 51" 63"	42" 52" 60" 72"	Type F	None
Falcon	17-C-WDC F-17-C-WDC 18-C-WDC F-18-C-WDC XX-C-WDC F-XX-C-WDC 24-C-WDC F-24-C-WDC 25-C-WDC F-25-C-WDC	2-13/16"	33" 43" 51" 63"	42" 52" 60" 72"	Type G	None