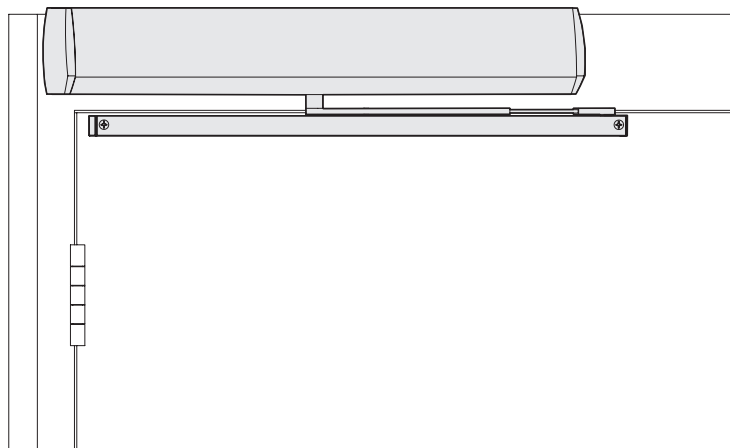


9130 SERIES

SINGLE DOOR, SURFACE MOUNT (PULL) OFFSET PIVOT/BUTT HINGE



The 9130 BENCHMARK by LCN is an electrically powered low-energy operator. It provides easy access for people with disabilities, or the elderly. Designed primarily for automatic opening applications that occasionally require manual opening. The BENCHMARK is a cost-effective solution for retrofitting an activated or manual door.

- Push 'N Go permits non-switch activation.
- Microprocessor control box ensures reliability and maintains customer settings.
- Power Boost allows for increased closing force near latch.

9130 Series is fully compliant with UL 325 and meets the provisions of ANSI A156.19. The 9130 Series is UL listed for fire-rated applications. The 9130 Series also meets the provisions of the Americans with Disabilities Act.

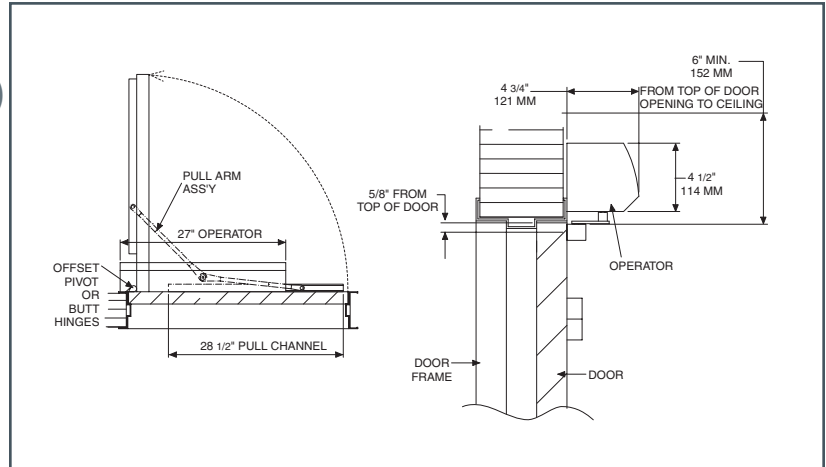
- 9130 Series operator is shipped with motor gearbox, control box, mounting plate, standard arm, metal cover, standard track, wood and machine screws. Actuators available separately, see pages 122-137.
- Single interior door, surface mounted.
- ADA compliant.
- On/Off switch included as standard.
- Non-handed for either right or left swinging door.
- 27" cover is standard. 36" optional.
- All potentiometers clearly labeled with their functions.
- LED lights indicate power to control box and motor gearbox.

MOUNTING						HANDING		FINISH	COVER	ARM FUNCTION			
SURFACE MOUNT SINGLE DOOR	SURFACE MOUNT SIMULTANEOUS PAIR	SURFACE MOUNT INDEPENDENT PAIR	CONCEALED SINGLE DOOR	CONCEALED SIMULTANEOUS PAIR	CONCEALED INDEPENDENT PAIR	HANDED	NON-HANDED	STANDARD ANODIZED	METAL	STANDARD (SINGLE LEVER)	REGULAR (DOUBLE LEVER)	DOUBLE EGRESS (PUSH/PULL)	OFFSET PIVOT BUTT HINGE ARM
●	○	○	○	○	○	○	●	●	●	○	○	○	○

● AVAILABLE
○ NOT AVAILABLE

9130 SERIES

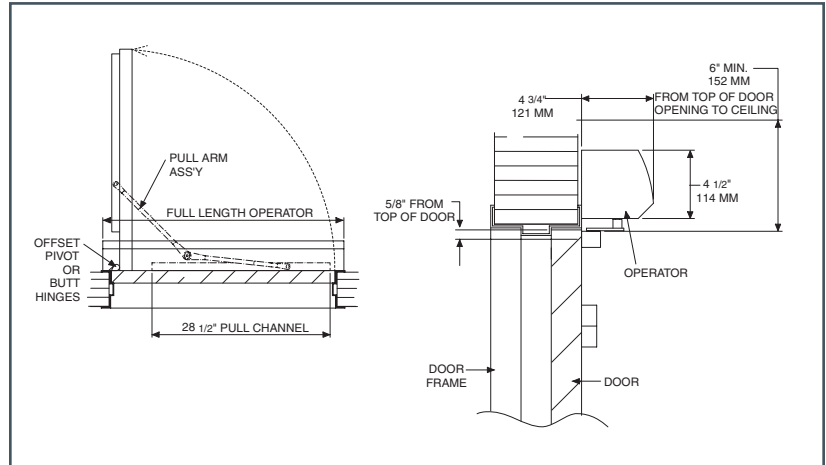
TOP JAMB SINGLE DOOR (OFFSET/BUTT HINGE, CENTER PIVOT, PULL, STANDARD COVER) MOUNTING



TOP JAMB SINGLE DOOR (OFFSET/BUTT HINGE, CENTER PIVOT, PULL, FULL COVER) MOUNTING

MAXIMUM OPENING

Template allows 90 degree power opening and 90 degree manual opening.



- **Butt Hinges** should not exceed 5" (127 mm) in width.
- **Reveal** should not exceed 1/8" (3 mm).
- **Head Frame** minimum 2" (51 mm).
- **Top Rail** minimum 2" (51 mm).
- **Opening and Closing Time** are variable by adjustments to the electronic control module located on the operator assembly. Maximum hold open time adjustable up to approximately 30 seconds.
- **System Diagram** see "AUTOMATIC OPERATORS" section pages 53 for typical system wiring and page 56 for electrical data.

Contact LCN Product Support
for installation assistance.

MOTOR GEARBOX

MOTOR GEARBOX ASSEMBLY, 9130-3454S

Driving mechanism for operator. (Switch included).
For 27" unit.

MOTOR GEARBOX ASSEMBLY (W/O SWITCH), 9130-3454

Driving mechanism for operator. (Switch not included).
For full length unit (36").

BRACKETS

MOUNTING BRACKET, 9130-3018

Standard mounting bracket.

SWITCH BRACKET – 29" CABLE, 9130-3351-1

Bracket used to locate switch at end of cover on full length unit.

SWITCH BRACKET – 41" CABLE, 9130-3351-2

Bracket used to locate switch at end of cover on full length unit.

CONTROL BOXES

CONTROL BOX, (120v), 9130-3462

Electronic controlling device with power supply output and power boost feature for Benchmark.

COVERS

METAL COVER, 9130-72MC

Standard, 27", non-handed, extruded aluminum cover.

FULL METAL COVER, 9130-72FC

36", non-handed, extruded aluminum cover.

COVER INSERT 9130-163

Used to cover operator shaft opening. (Includes 2 pieces).

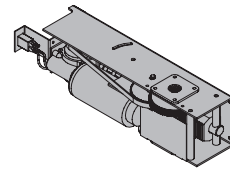
COVER END CAP INSERT, 9130-163-1

Used to cover switch hole opening.

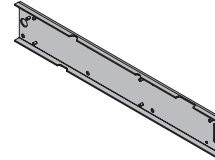
COVER END CAP, 9130-334

Black plastic end caps. (Includes 9130-163-1 cover and cap insert).

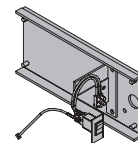
3454
3454S



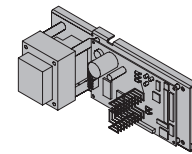
3018



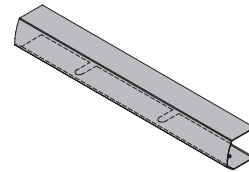
3351-1
3351-2



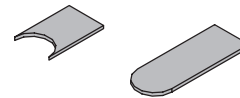
3462



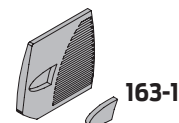
72MC
72FC



163



334



Note (*334 includes 163-1)

9130 SERIES

TRACKS

STANDARD TRACK, 9130-3038

Standard, non-handed track.

TRACK END CAP, 9130-73

Black plastic end caps.

ROLLER, 9130-3034

Quiet low friction roller assembly.

ARMS

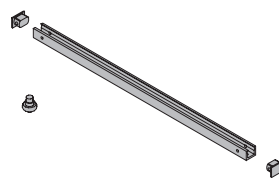
STANDARD ARM, 9130-3077T

Non-handed arm. Track roller not included.

STANDARD ARM with 9130-3077PLCM

Non-handed arm and standard non handed track.

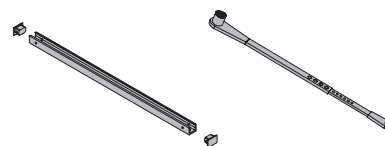
3038
73
3034



3077T



9130-3077PLCM



9130 SERIES

TABLE OF SIZES

DOOR WIDTH

30" 762mm	48" 1219mm
9131	
Minimum Door Width	

→ Indicates recommended range of door width for operator.

NOTE: For All Benchmark Series.

30" minimum door width for 27" pull operator.

36" door width only for full length pull operator.

HOW-TO-ORDER 9130 SERIES OPERATORS

1. SPECIFY FINISH

- ☐ Standard Anodized Finish _____
Aluminum or Dark Bronze.

Operator will be shipped with:

- STANDARD MOTOR GEARBOX,
- STANDARD CONTROL BOX,
- MOUNTING BRACKET,
- 27" METAL COVER,
- STANDARD ARM (3077T),
- STANDARD TRACK w/TRACK ROLLER,
- WOOD and MACHINE SCREW PACK

Unless options listed below are selected.

OPERATOR OPTIONS

COVER

- ☐ 36" Full Cover.

[illegible]