



## 280+ CONTROL MODULE INSTALLATION INSTRUCTIONS

### HOW THE 280+ SHEARLOCK WORKS

A shearlock relies on the shear strength of steel for holding force.

An armature, when attracted by an energized magnet, will move towards it. This action overcomes a narrow air gap that is necessary for the door to swing open and closed without interference when the door is unlocked.

Once engaged, the shape of the parts interlock and gives the system a holding force in excess of 2700 pounds.

Because of system design, door and frame preparation must be done very accurately. Therefore, it is important that the magnet and armature center-lines align to form a vertical axis (see top of page 2). For best reliability, it is also critical that the air gap is adjusted to be as close as possible without interfering with door operation.

A minimum of 2 seconds after power is applied, the electronic module has a very strong magnetic field, which allows the armature to reliably overcome the air gap and ensure positive engagement.

### SPECIFICATIONS

#### Electrical

Input Voltage	<b><i>Filtered, Regulated 12 to 24 VDC</i></b> (automatic voltage selection)
Input Current	0.9 Amps at 12V, 0.45 Amps at 24V (max.)
Adjustable Time Delay (ATD)	Adjustable from 2 to 30 seconds. Factory default: 3 seconds
Automatic Relock Switch (ARS)	External magnetic reed switch (required for proper operation)
Optional Monitoring Output MBS	Contact rating - 1 Amp maximum at 30VDC

#### Mechanical

Mounting Type	Mortise mounted horizontal or vertical. Non-handed
Shear Holding Force	2700 lbs.
Door Thickness	1 3/4 " Minimum (except for HD models)
Plating	Magnetic face and armature; nickel plated to resist corrosion

#### Warranty

Magnetic coil: Lifetime      Electronics: 1 year limited

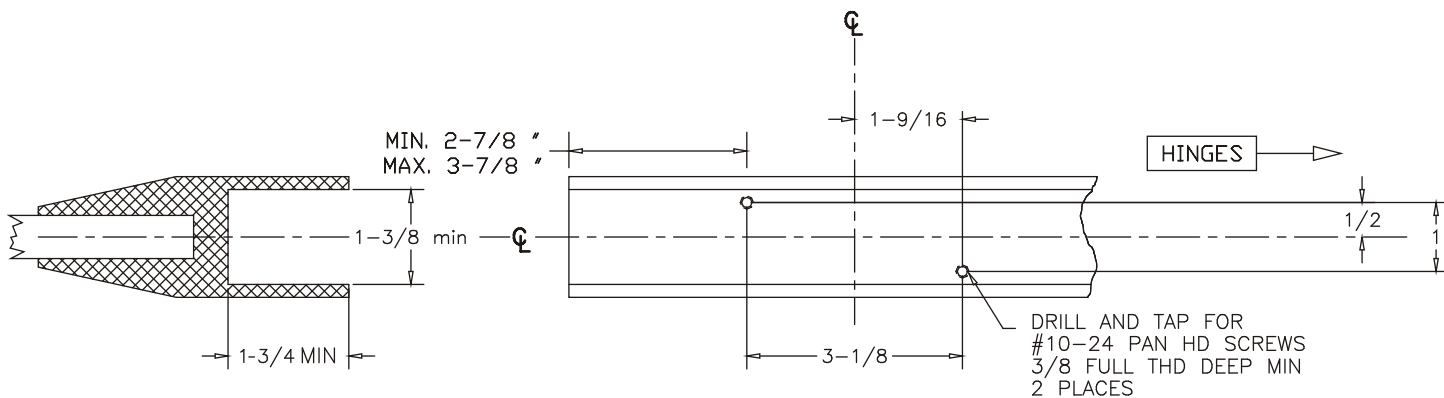
#### Certifications/Compliance

UL# R12092; MEA# 222-96-E; CSFM# 3774-0544:107

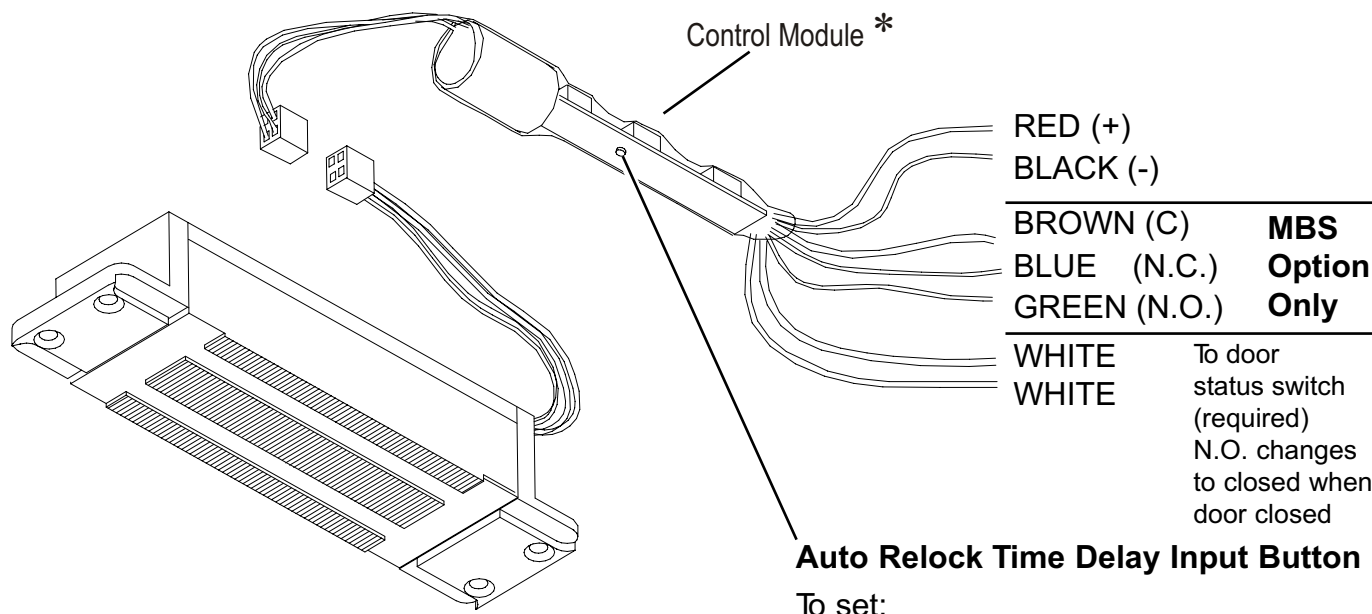
#### Shipping Weight

280+ - 6 Pounds; 280+TRD/BRD - 8 Pounds

**TOP RAIL DOOR (TRD) MODEL TEMPLATE INFORMATION:**



**WIRING AND TIME DELAY SETTING:**



**Auto Relock Time Delay Input Button**

- To set:
1. With door open, apply power.
  2. Within 5 seconds, push the time delay pushbutton once for each second of time delay desired. (Up to 30).
  3. Close the door and verify the delay; minimum delay achievable is 2 seconds due to nature of module.

**Note:** the set delay is stored at the door closing and will repeat itself at the subsequent applications of power.

**\* IMPORTANT:**  
Control Module to be mounted in a remote and dry location, and no farther than 15 feet away from lock.  
DO NOT CUT YELLOW WIRE.

**Schlage Lock Company**  
575 Birch Street  
Forestville, CT 06010  
technical support: 866-322-1237  
fax: 860-584-2136