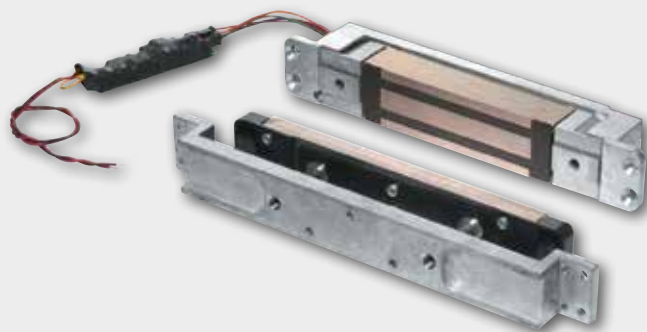


**SCHLAGE**

## GF3000

Mortise mounted shear lock



### Overview

The GF3000 Series shear lock features a patented design, offering advances over any shear lock in the market.

A microprocessor-based control module provides advanced electronic features. This circuitry automatically senses and adjusts input voltage, allowing for operation from 12 to 24 volt DC power sources.

The mortise shear lock offers the advantage of a totally concealed locking mechanism, providing superior security and appearance. The patented design incorporates locking “tabs” on the magnet assembly with mating grooves in the armature plate. The flexible mounting features allows for normal door and frame movement.

The shear lock is ideally suited for commercial grade quality hollow metal doors and frames, as well as herculite doors with top rail. Advances in design provide low operating temperatures, making this shear lock suitable for use in the growing demand for concealed locks in wood frames.

The GF3000 TRD model is available when armature adjustment is required from the edge of the door due to flush ceiling conditions. The GF3000BRD model is available when no top rail mounting is available.

### Features and benefits

- Automatic voltage selection 12/24 VDC (filtered)
- 3000 lbs of holding force
- Requires filtered, regulated power supply
- Built-in automatic relock switch
- Adjustable time delay on relock, 0-30 seconds
- Low temperature operation
- Microprocessor controlled
- Optional Magnetic Bond Sensor (MBS) to monitor the secure/not secure condition of the lock
- Optional Door Status Monitor (DSM) to sense the open/closed position of the door
- UL 10C Positive Pressure Fire Tests of Door Assemblies, cUL, CSFM and MEA listed to use on fire labeled openings
- Meets ANSI/BHMA A156.23 standards

## Specifications

Holding force	3000 lbs
Current draw	0.90 amp @ 12 VDC 0.45 amp @ 24VDC
Weight	7 lbs
Lock body (L x H x D)	9 1/2" x 1 1/2" x 1 1/2"
With mounting tabs (L x H x D)	11 9/16" x 1 1/2" x 1 1/2"
Armature (L x H x D)	8 3/8" x 1 3/8" x 1/2"
Armature bracket (L x H x D)	10 5/8" x 1 3/8" x 1"
Certifications	UL 10C Positive Pressure Fire Tests of Door Assemblies ANSI/BHMA A156.23 1500 lbs

## Ordering information

- **GF3000** - Adjustable from top edge of door
- **GF3000TRD** - Mounting assembly which provides armature adjustable from the latch edge of the door. Recommended with zero clearance condition between top of door and ceiling.
- **GF3000BRD** - Mounting assembly to mortise armature into bottom rail of door. Magnet is installed in floor/threshold. Provides solution when no top rail is available.

### Options

- **DSM/MBS** - Door Status Monitor/Magnetic Bond Sensor

Allegion, the Allegion logo, Schlage, and the Schlage logo are trademarks of Allegion plc, its subsidiaries and/or affiliates in the United States and other countries. All other trademarks are the property of their respective owners.

## About Allegion

Allegion (NYSE: ALLE) creates peace of mind by pioneering safety and security. As a \$2 billion provider of security solutions for homes and businesses, Allegion employs more than 7,800 people and sells products in more than 120 countries across the world. Allegion comprises 23 global brands, including strategic brands CISA®, Interflex®, LCN®, Schlage® and Von Duprin®. For more, visit [www.allegion.com](http://www.allegion.com).

aptiQ ■ LCN ■  ■ STEELCRAFT ■ VON DUPRIN



© 2014 Allegion  
004160, Rev. 02/14  
[www.allegion.com/us](http://www.allegion.com/us)