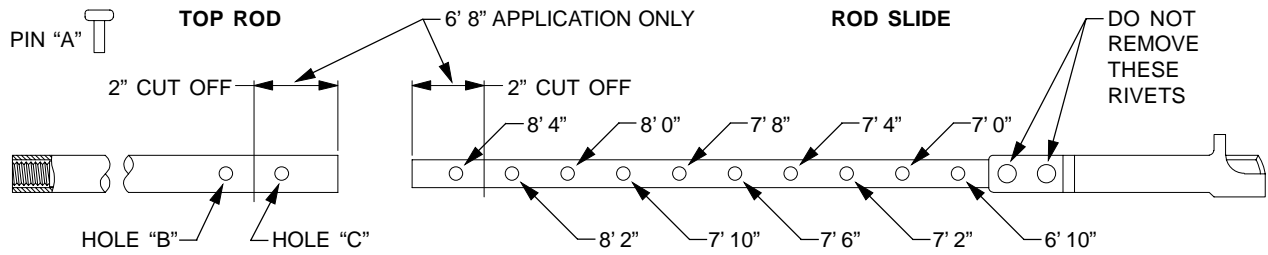
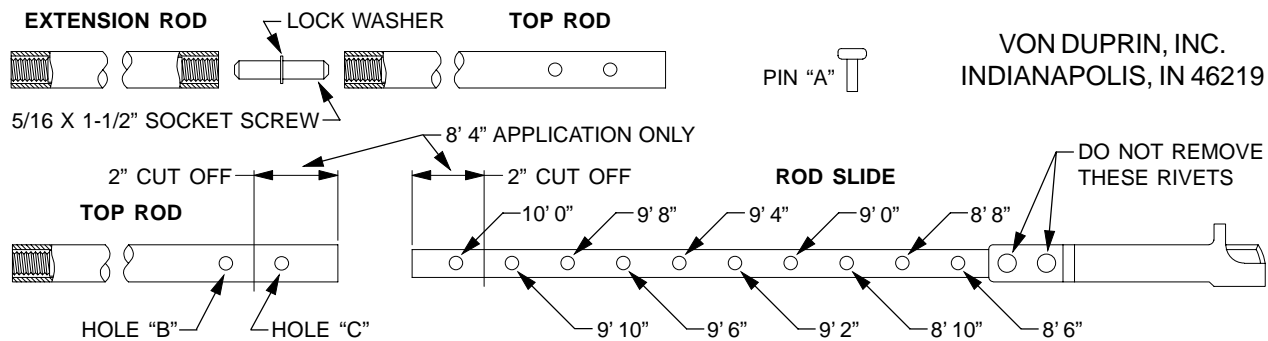


**33/3547A/48A TOP ROD ASSEMBLY INSTRUCTIONS  
FOR 6' 8" THRU 8' 4" DOOR HEIGHT**



DOOR SIZE	ASSEMBLY INSTRUCTIONS
6' 8" TO LESS THAN 6' 10"	<ol style="list-style-type: none"> <li>CUT 2" OFF END OF BOTH TOP ROD AND ROD SLIDE AS SHOWN.</li> <li>ASSEMBLE WITH PIN "A" THRU HOLE "B" IN TOP ROD AND 6' 10" HOLE IN ROD SLIDE.</li> </ol>
6' 10" THRU 8' 4"	<ol style="list-style-type: none"> <li>NO CUTTING REQUIRED.</li> <li>SELECT HOLE CORRESPONDING TO HEIGHT OF DOOR BEING INSTALLED.</li> <li>ASSEMBLE WITH PIN "A" THRU HOLE "C" IN TOP ROD AND CORRESPONDING HOLE IN ROD SLIDE.</li> </ol> <p><b>NOTE:</b> HOLE "B" IN TOP ROD IS NOT USED HERE.</p>

**TOP ROD ASSEMBLY INSTRUCTIONS FOR 8' 4" THRU 10' 0" DOOR HEIGHT**



DOOR SIZE	ASSEMBLY INSTRUCTIONS
8' 4" TO LESS THAN 8' 6"	<ol style="list-style-type: none"> <li>CUT 2" OFF END OF BOTH TOP ROD AND ROD SLIDE AS SHOWN.</li> <li>ASSEMBLE WITH PIN "A" THRU HOLE "B" IN TOP ROD AND 8' 6" HOLE IN ROD SLIDE, THEN ASSEMBLE EXTENSION ROD AS SHOWN.</li> </ol>
8' 6" THRU 10' 0"	<ol style="list-style-type: none"> <li>NO CUTTING REQUIRED.</li> <li>SELECT HOLE CORRESPONDING TO HEIGHT OF DOOR BEING INSTALLED.</li> <li>ASSEMBLE WITH PIN "A" THRU HOLE "C" IN TOP ROD AND CORRESPONDING HOLE IN ROD SLIDE, THEN ASSEMBLE EXTENSION ROD AS SHOWN.</li> </ol>

PART NO. 972443\_A

**INSTRUCTIONS FOR PRINTER:**

1. Black print on white tag stock 0.010" +/- 0.005" thick.
2. Print both sides.
3. 4" high x 7" wide trim size.

PART NO. 972443\_A