

VON DUPRIN®

AX exit devices

Featuring the 98/99,
33/35A and 22 Series
devices

The exit device that
requires only 5 lbs. of force
to operate

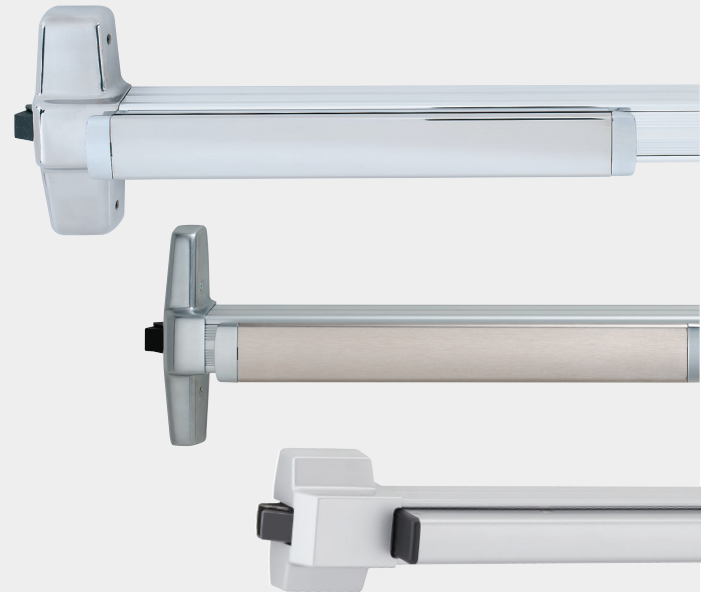
The Von Duprin AX device was born out of a need to provide the market with a solution that meets recent California Building Code enhancements. Beginning in January 2014, the California Building Code (Chapter 11B-309.4) established a 5 lb. maximum force of operable parts on doors and gates.

Since pioneering the first exit device in 1908, Von Duprin life safety products have provided unparalleled quality, performance and flexibility for schools, hospitals, stadiums and public buildings. These products come with the support and customer care only offered by Von Duprin. Providing the confidence and peace of mind at critical moments of life safety.

AX device specification requirements

Provide exit devices tested to ANSI/BHMA A156.3 Grade 1, [OPTION for specific compliant products/applications: UL certified to meet maximum 5 pound requirements according to the California Building Code section 11B-309.4,] and UL listed for Panic Exit or Fire Exit Hardware.

Contact Allegion today at 888.925.4359
or www.ax.allegion.com to learn how the AX device
can help you provide accessibility without compromise.



How to identify the Von Duprin AX device

1. Look for the "AX" Prefix in the door schedule and/ or specification.
2. In the field, look for the California Compliance note on the UL Label and the AX Device Label. Both labels can be found on the center case cover of the exit device as shown below.

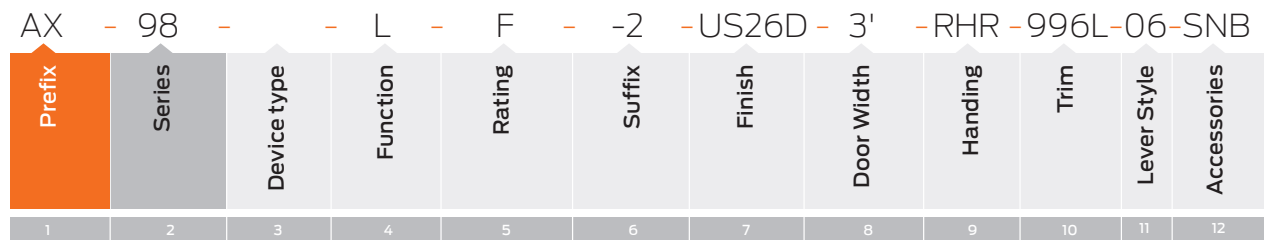


AX98/99 Series Specifications	
Device types	AX98/99 - Rim AX98/9949 LBL & LBL-AFL - Concealed Vertical Cable Less Bottom Latch
Device functions	EO, DT, NL, NLOP, L, LBE, LDT, LNL
Device lengths	3' 4'
Rating	Panic and Fire
Electric options	LX - Latchbolt monitor switch LXLC - Latchbolt monitor switch low current LXRX - Latchbolt pushpad monitor LXRXLC - Latchbolt pushpad monitor low current RX - Pushpad monitor switch RXLC - Pushpad monitor switch low current RX2 - Double pushpad monitor switch ALK - Alarm kit SS - Signal switch
Mechanical options	GBK - Glass bead kit -2 - Double cylinder SNB - Sex bolts SEC - Security screws WP - Weep holes
Dogging options (Panic device only)	Hex key dogging = Standard CD - Cylinder dogging DI - Dogging indicator LD - Less dogging SD - Special dogging

AX33/35A Series Specifications	
Device types	AX33/35A - Rim AX33/3549 LBL & LBL-AFL - Concealed Vertical Cable Less Bottom Latch
Device functions	EO, DT, NL, NLOP, L, LBE, LDT
Device lengths	3' 4'
Rating	Panic and Fire (3349 LBL/AFL only)
Electric options	LX - Latchbolt monitor switch LXLC - Latchbolt monitor switch low current LXRX - Latchbolt pushpad monitor LXRXLC - Latchbolt pushpad monitor low current RX - Pushpad monitor switch RXLC - Pushpad monitor switch low current RX2 - Double pushpad monitor switch ALK - Alarm kit SS - Signal switch
Mechanical options	GBK - Glass bead kit SEC - Security screws WP - Weep holes
Dogging options (Panic device only)	Hex key dogging = Standard CD - Cylinder dogging LD - Less dogging

AX22 Series Specifications	
Device types	AX22 - Rim
Device functions	EO, DT, NL, NLOP, L, LBE
Device lengths	3' 4'
Rating	Panic and Fire
Electric options	LX - Latchbolt monitor switch RX - Pushpad monitor switch RX2 - Double pushpad monitor switch ALK - Alarm kit
Mechanical options	GBK - Glass bead kit
Dogging options (Panic device only)	Hex key dogging = Standard LD - Less dogging

Ordering information



Selections correspond with the numbers above. See price book for specific configuration options.

1	Prefix
AX*	Accessible Device
LX	Latchbolt Monitor Switch
LXLC	Latchbolt Monitor Switch Low Current
LXRX	Latchbolt Pushpad Monitor
LXRXLC	Latchbolt Pushpad Monitor Low Current
RX	Pushpad Monitor Switch
RXLC	Pushpad Monitor Switch Low Current
RX2	Double Pushpad Monitor Switch
SS	Signal Switch
*Must be specified; may select more than one prefix.	
2	Series
98	Series 98 - smooth
99	Series 99 - grooved
33A	Series 33A - grooved
35A	Series 35A - smooth
22	Series 22
3	Device Type
N/A	Rim
49	Concealed Vertical Cable

4	Function
EO	Exit Only
DT	Dummy Trim
NL	Night Latch
NLOP	Night Latch - Optional Pull
L	Lever
LBE	Lever - Blank Escutcheon
LDT	Lever, Rigid - Dummy Trim
LNL	Lever, Rigid - Night Latch
5	Rating
N/A	Panic
F	Fire-rated
6	Suffix
-2	Double Cylinder
LBL	Less Bottom Latch
LBL-AFL	Less Bottom Latch with Fire Pin
WH	Weep Holes
7	Finish
See pricebook for finish offering	

8	Door Width
3'	Standard Default
4'	
9	Handing
RHR	Right Hand Reverse
LHR	Left Hand Reverse
10	Trim
See pricebook for trim/control offering	
11	Lever Style
See pricebook for lever style offering	
12	Accessories
ALK	Alarm Kit
GBK	Glass Bead Kit
SNB	Sex Bolts

Contact Allegion today to learn how the AX device can help you provide the light touch for complete accessibility
888.925.4359 or www.ax.allegion.com



ALLEGION™

© 2014 Allegion
010333, Rev. 5/14
allegion.com/us