



941091-00

QEL

VON DUPRIN®

Motor Replacement Kit

Installation Instructions

1



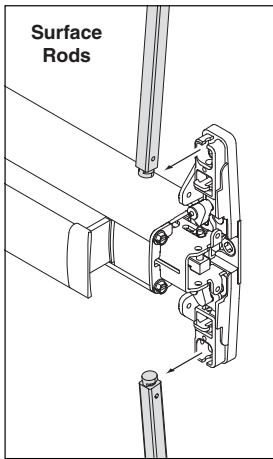
To avoid risk of shock, disconnect AC power from power supply before proceeding with this conversion.

If using Battery Backup option, unplug all four wires from battery terminals.

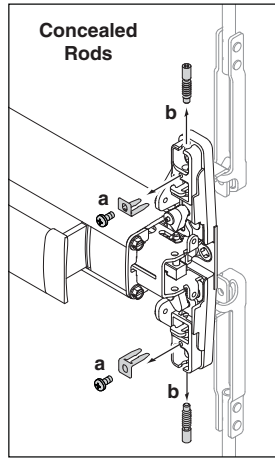
2

Detach Vertical Rods

Skip this step if device does not have vertical rods.



OR

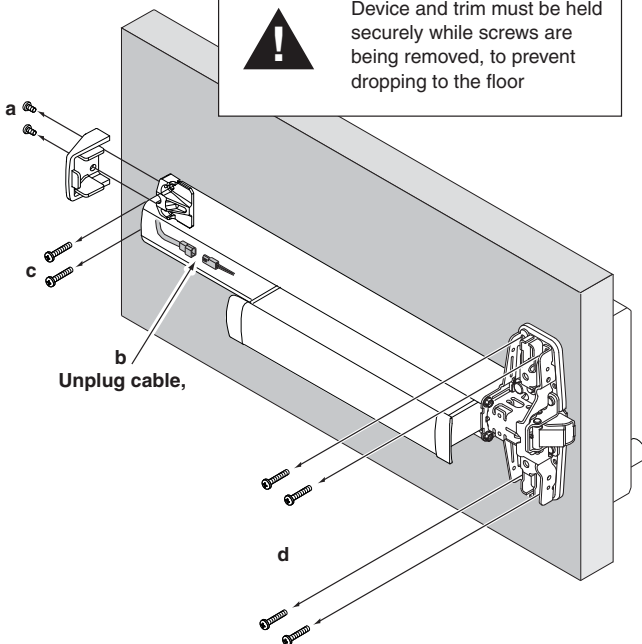


3

Remove Exit Device from Door

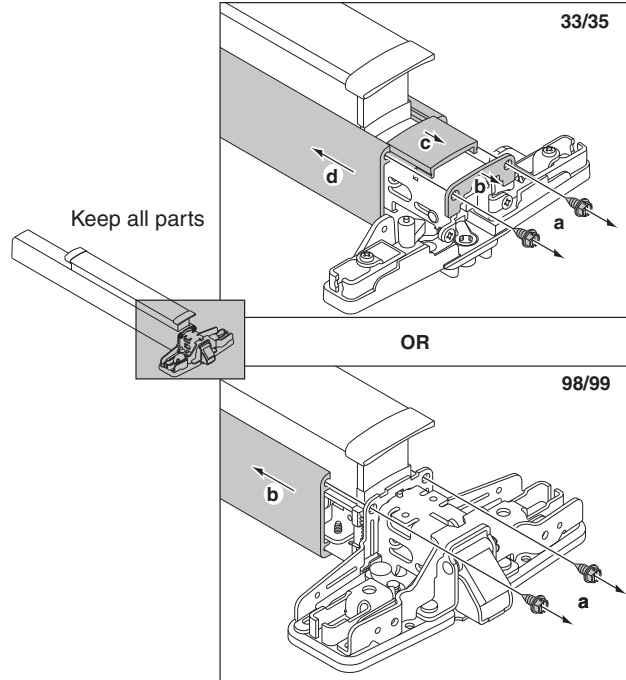


Device and trim must be held securely while screws are being removed, to prevent dropping to the floor



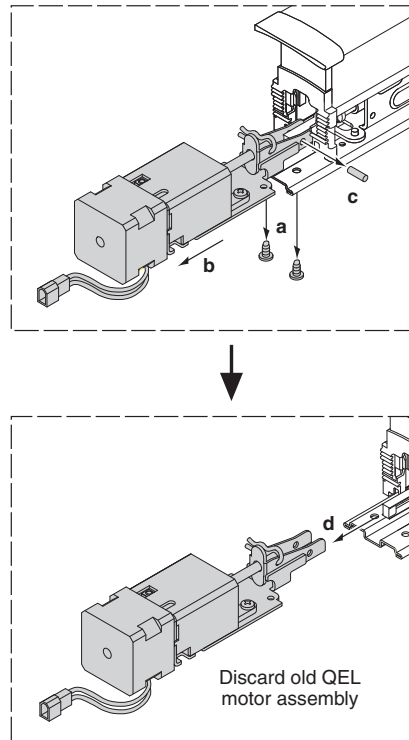
4

Remove Mechanism Case



5

Remove Old QEL Motor Assembly



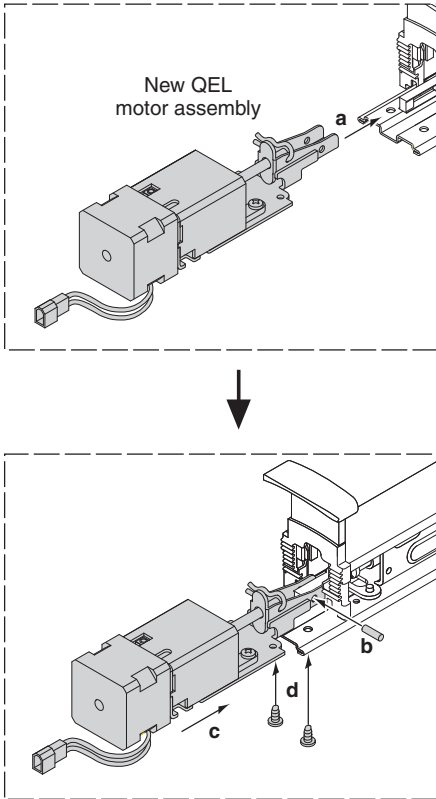
Customer Service

1-877-671-7011

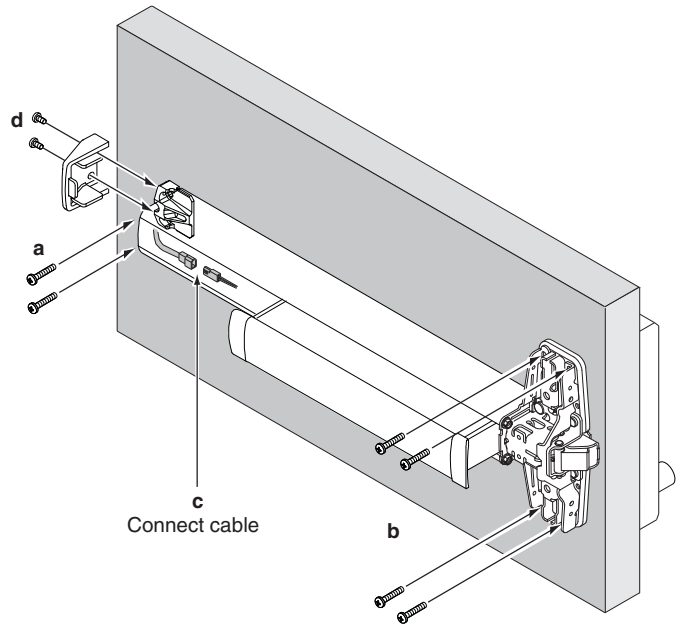
www.allegion.com/us

© Allegion 2014
Printed in U.S.A.
941091-00 Rev. 01/14-b

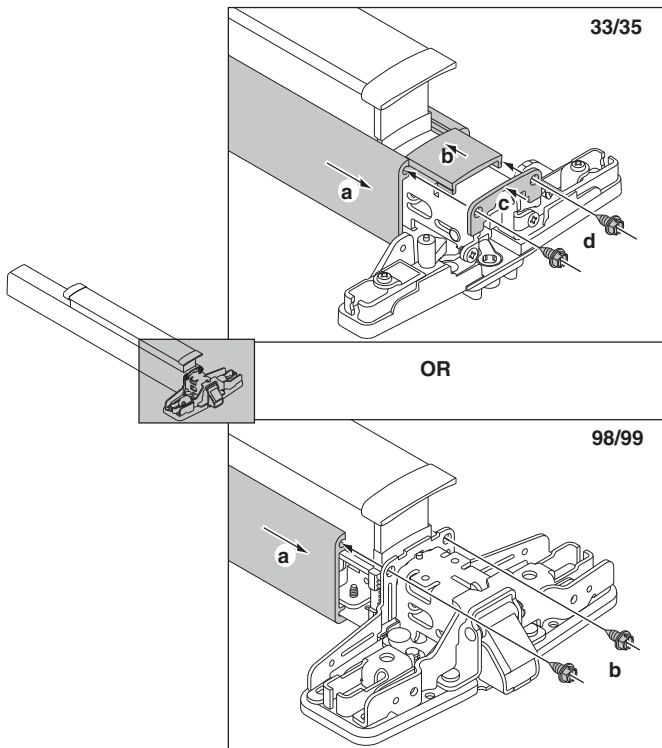
6 Install New QEL Motor Assembly



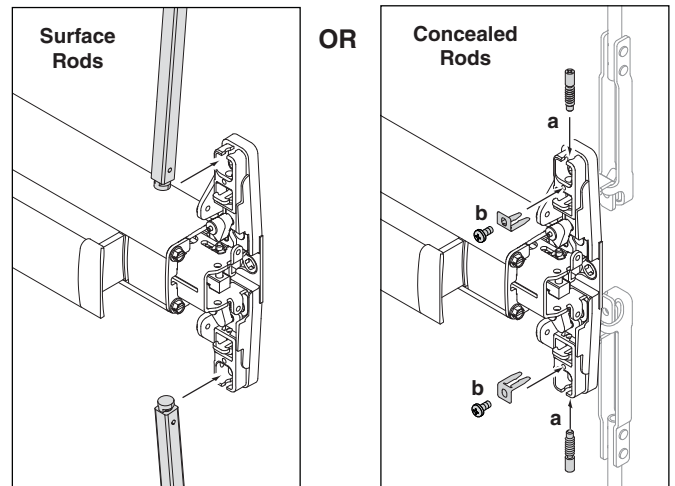
8 Attach Exit Device to Door



7 Install Mechanism Case



9 For Vertical Devices ONLY, Attach Vertical Rods:



For more detailed installation instructions for specific exit devices, visit www.allegion.com/us