

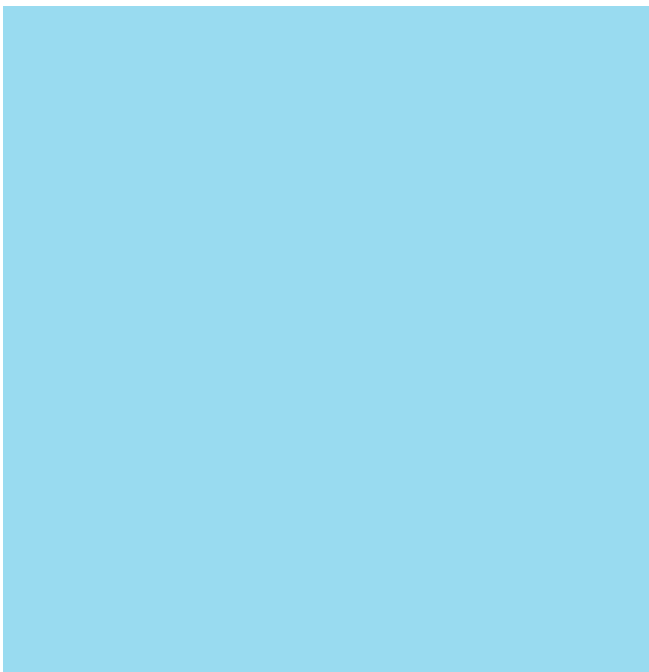
Product Comparisons

Mortise Locks

ASSA ABLOY

Brought to you by ASSA ABLOY Group brands:
ARROW | CORBIN RUSSWIN | SARGENT | YALE

The global leader in
door opening solutions



Institutional Hardware

			Corbin Russwin	SARGENT		Competitors	
		ANSI/ BHMA No.	ML2000 Series	8200 Series	7900 Series	Schlage L-9000	Stanley/Best 45H Series
Features	ANSI/BHMA Certified Operational Grade 1	A156.13	Yes	Yes	Yes	Yes	Yes (45H)
	ANSI/BHMA Certified Security Grade 1	A156.13	Yes	Yes	No	Yes (x Conv. Cyl.)	Yes (47H)
	UL Listed (3 Hour)	-	Yes	Yes	Yes	Yes	Yes
	Warranty	-	10 Years	10 Years	5 Years	1 Year	5 Years
	Buy American Act	-	Yes	Yes	Yes	Yes	Unknown
	Windstorm Certified	-	Yes	Yes	No	Yes	Yes
	Door Thickness	-	1 3/8" - 4"	1 3/4"	1 3/8" - 2 1/4"	1 3/8"-2 1/2"	1 3/4" - 5"
	Hub Material	-	Steel	Steel	Steel	Stainless Steel	Stainless Steel
	Spindle Size	-	5/16"	5/16"	5/16"	Unknown	Unknown
	Through Connect	-	Yes	No	No	No	Yes
	Field Reversible Handing	-	Yes	Yes	Yes	Yes	Yes
	Quick Change Hand/Locking	-	Yes	Yes	Yes	Yes	Yes
	Through-Bolt Trim	-	Yes	Yes	Yes	Yes	Yes
	Electrified Functions	-	Yes (8)	Yes (4)	Yes (4)	Yes (12)	Yes (12)
	Electrified Options	-	Yes	Yes	Yes	Yes	Yes
	Throw	-	1"	1"	1"	1"	1"
	Material	-	Stainless Steel	Solid Investment Cast Stainless Steel	Steel Assembly with Hardened Steel Insert	Stainless Steel	Stainless Steel
	Roller Pins	-	No	No	No	No	No
	Throw	-	3/4"	3/4"	3/4"	3/4"	3/4"
	Material	-	Stainless Steel	Stainless Steel	Stainless Steel	Stainless Steel	Stainless Steel
	2pc. Anti Friction	-	Yes	No	No	Yes	No
	Number of Mechanical Functions	-	41	46	17	37	28
	Number of Finishes	-	13	14	14	11	13
	Lever Designs	-	8 Standard	8 Standard	4 Standard	10	6
	Knob Designs	-	3 Standard 1 Anti-Harm	4	1	2 1 Anti (SK1)	1
	Decorative Designs	-	Museo® & Vineyard®	Studio Collection & Coastal	Studio Collection & Coastal	Danmark	Yes
	Security or Patented Keying	-	Yes	Yes	Yes	Yes	Yes
SFIC	-	No	Yes	Yes	Yes	Yes	
Finishes	Bright Brass, Clear Coated	605	Yes	Yes	Yes	Yes	Yes
	Satin Brass, Clear Coated	606	Yes	Yes	Yes	Yes	Yes
	Satin Brass, Blackened, Satin Relieved, Clear Coated	609	No	No	No	Yes	No
	Bright Bronze, Clear Coated	611	Yes	Yes	Yes	No	Yes
	Satin Bronze, Clear Coated	612	Yes	Yes	Yes	Yes	Yes
	Oil Rubbed Bronze	613	Yes	Yes	Yes	Yes	Yes
	Dark Oxidized Satin Bronze – equivalent	613E	Yes	Yes	Yes	Yes	No
	Dark Oxidized Satin Bronze, Clear Coated	614	No	Yes	Yes	No	No
	Bright Nickel Plated, Clear Coated	618	Yes	Yes	Yes	No	Yes
	Satin Nickel Plated, Clear Coated	619	Yes	Yes	Yes	Yes	Yes
	Flat Black Coated	622	No	No	No	No	Yes
	Statuary Dark Bronze	624	No	Yes	Yes	No	No
	Bright Chrome Plated	625	Yes	Yes	Yes	Yes	Yes
	Satin Chrome Plated	626	Yes	Yes	Yes	Yes	Yes
	Bright Stainless Steel	629	Yes	Yes	Yes	Yes	Yes
	Satin Stainless Steel	630	Yes	Yes	Yes	Yes	Yes
	Dark Bronze Painted	690	No	No	No	No	Yes
	Black Oxidized Bronze, Oil Rubbed	722	Yes	No	No	No	No
MicroShield® Antimicrobial Coating	-	Yes	Yes	Yes	Yes	No	

			Corbin Russwin	SARGENT		Competitors	
		ANSI/ BHMA No.	ML2000 Series	8200 Series	7900 Series	Schlage L-9000	Stanley/Best 45H Series
No Cylinder	Bathroom Privacy with Thumbturn Each Side	-	-	-	-	L9040 x XL11-446	-
	Dummy – Trim One Side	-	ML2050	8295	7993 / 7995	L9175 / L0170	-
	Dummy – Trim Both Sides	-	ML2070	8296	7994	L9176 / L0172	-
	Dummy – Trim Both Sides x Active Trim	-	-	-	-	L9110 x XL11-741	-
	Exit or Communicating	F31	-	8213	-	-	NX
	Exit – With Deadbolt	-	-	-	-	L9412 x LX11-907	-
	Passage or Closet Latch	F01	ML2010	8215	7915	L9010	N
	Privacy with Coin Turn	-	-	-	-	L9044	-
	Privacy with Coin Turn x Deadbolt	-	-	-	-	L9444	-
	Privacy with Indicator	-	-	Prefix 49	-	-	-
	Privacy, Bedroom or Bath	F02	ML2020	8268	-	-	LT
	Privacy, Bedroom or Bath (No Deadbolt)	F22	ML2060	8265	7965	L9040	-
	Privacy, Bedroom or Bath (Simultaneous Retraction)	F19	ML2030	8266	7966	L9440	L
	Single Cylinder	Apartment Corridor Door	F20	ML2067	8243	7943	L9453
Apartment, Exit or Public Toilet – Thumbturn		F10	ML2048	8247	-	-	-
Classroom		F05	ML2055	8237	7937	L9070	R
Classroom		-	ML2003	-	-	-	-
Classroom Deadlock		F29	ML2017	8203	-	L9463	RD
Classroom Security no Inside Cylinder		-	ML2073	-	-	-	-
Classroom with Holdback		F06	ML2056	8289	-	L9076	RHB
Deadlock – Single Cylinder with Thumbturn		F17	ML2013	8221	-	L9460	AD
Deadlock – Single Cylinder x No Thumbturn		F18	ML2011	8220	-	L9464	TD
Detention		-	-	-	-	L9485 x XL11-557	-
Dormitory or Exit – Single Cylinder x Simultaneous Retraction x No Toggle		F13	ML2065	8225	7925	L9456	T
Dormitory or Exit – Single Cylinder x Simultaneous Retraction x Rigid Outside Lever		-	-	-	-	-	TD
Dormitory or Exit – Single Cylinder x Simultaneous Retraction x Toggle		F12	-	8245	7945	-	TA
Entrance x Hold Back x Thumbturn No Toggle		-	ML2058	-	-	-	-
Entrance x Thumbturn x No Toggle		-	ML2053	-	-	-	-
Entry – With Toggle		F04	“ML2051 ML2054”	8255 8256	7955	L9050	A/AT
Exit – Single Cylinder x No Outside Trim		-	-	8206	-	-	XR
Front Door		F08	ML2048	8247	-	-	-
Hotel Guest		F15	ML2029 x M19	50-8250	50-7950	-	H/HJ
Hotel/Motel High Security x Rigid Knob only		-	ML2029HS	-	-	-	-
Hotel/Motel x No Indicator		-	-	8250	-	L9485	-
Institutional Privacy		F26	ML2069	8267	-	-	-
Multi-Function Lock		-	-	8205	-	-	-
Privacy/Apartment x No deadbolt, closing door unlocks outside lever		-	ML2068	-	-	L9056	-
Room Door		F21	ML2024	8224	7924	L9473	-
Security Entrance x Single Cylinder x Thumbturn		-	ML2075	-	-	-	-
Single Cylinder Dummy Trim Active, No Latch		-	ML2080	-	-	-	-
Storeroom or Closet – Single Cylinder with Deadbolt		-	-	8227	-	L9465	-
Storeroom or Closet – Single Cylinder with Deadbolt x Rigid Outside Trim		-	ML2059	8227	-	L9480	-
Storeroom or Closet – Single Cylinder with Deadbolt, No Inside Trim		-	-	8235	-	-	-
Storeroom or Closet – Single Cylinder with Thumbturn x Deadbolt x Rigid Outside Trim		-	-	8251	-	-	-
Storeroom or Closet – Single Cylinder x No Deadbolt		F07	ML2057	8204	7904	L9080	D
Storeroom or Closet – Single Cylinder x No Deadbolt x No inside trim	-	-	8236	-	-	-	
Storeroom Single Cylinder Rigid Lever outside, No Inside Trim	-	-	-	-	-	ZD	
Utility Single Cylinder Rigid Lever No inside Trim	-	-	8231	-	-	-	

Disclaimer: This is a comparison for like product. This is not a legal or binding document. Consult Mfg. Catalog for special detail and accuracy. N/A or Unknown means either Not Available or Information has not been located. Copyright © 2015, ASSA ABLOY Door Security Solutions, an ASSA ABLOY Group company. All rights reserved. Reproduction in whole or in part without the express written permission of ASSA ABLOY Door Security Solutions is prohibited.

Institutional Hardware *continued*

		Corbin Russwin	SARGENT		Competitors			
		ANSI/ BHMA No.	ML2000 Series	8200 Series	7900 Series	Schlage L-9000	Stanley/Best 45H Series	
Functions	Double Cylinder	All Purpose – Double Cylinder x Holdback x No Outside Trim	-	-	8292	-	-	XRHB
		Apartment, Exit or Public Toilet – Double Cylinder x No Deadbolt	F09	ML2042	8216	7916	L9060	C
		Asylum or Institutional	F30	ML2032	8217	-	L9082	W
		Asylum or Institutional – Classroom Deadlock x Double Cylinder	-	-	8223	-	-	-
		Asylum or Institutional – Double Cylinder Storeroom with Toggle x Deadbolt	F35	-	8248	-	-	S
		Classroom Security Intruder – No Deadbolt, Double Cylinder	-	ML2002	-	-	-	-
		Classroom Security Intruder – With Deadbolt – Outside Trim Remains Locked	-	ML2072	8241	-	-	-
		Deadlock – Double Cylinder	F16	ML2012	8222	-	L9462	WD
		Dormitory or Exit – Double Cylinder	F11	ML2082	8246	-	-	-
		Double Cylinder Dummy trim Active, No Latch	-	ML2090	8294	-	-	-
		Double Cylinder x No Deadbolt x Outside Trim with Holdback	-	-	-	-	L9077	CHB
		Institutional With Deadbolt x Double Cylinder	-	ML2092	8252	-	L9482 x XL11-543	-
		Intruder Deadbolt	F34	-	8240	-	L9458	INA
		Intruder Deadbolt x Double Cylinder	F33	ML2062	8239	-	L9457	IND
		Intruder Latchbolt	F32	ML2052	8238	7938	L9071	NL
		Store Door	F14	ML2022	8226	7926	L9466	G
Storeroom	-	-	-	-	L9066 x XL11-897	-		

			Corbin Russwin	SARGENT		Competitors		
		ANSI/ BHMA No.	ML2000 Series	8200 Series	7900 Series	Schlage L-9000	Stanley/Best 45H Series	
Functions	Electrified Options	Request to Exit Switch	-	QC-M92	Prefix-RX	Prefix-RX	Suffix-RX	Suffix-RQE
		Latchbolt Monitor	-	QC-M91	Prefix-LX	-	-	-
		Deadbolt Monitor	-	QC-M105	Prefix-DS	-	-	-
	Fail Safe	No Cylinder x Outside Lever Unlocked	-	ML20910	-	-	L9090EL	NXEL
		No Cylinder x Both Levers Unlocked	-	ML20920	-	-	L9091EL	-
		No Cylinder with Deadbolt x Outside Lever Unlocked	-	-	-	-	-	LEL
		Single Cylinder x Outside Lever Unlocked (Basic Function)	-	ML20903	8270	7970	L9092EL	DEL
		Single Cylinder x Both Levers Unlocked	-	-	-	-	L9093EL	-
		Double Cylinder x Outside Lever Unlocked	-	-	-	-	L9094EL	-
		Double Cylinder x Both Levers Unlocked	-	ML20902	8272	7972	L9095EL	WEL
		Single Cylinder with Deadbolt x Outside Lever Unlocked	-	-	-	-	-	TDEL
		Single Cylinder with Deadbolt x Both Levers Unlocked	-	ML20901	-	-	-	TWEL
	Fail Secure	No Cylinder x Outside Lever Locked	-	ML20930	-	-	L9090EU	NEXU
		No Cylinder x Both Levers Locked	-	ML20940	-	-	L9091EU	-
		No Cylinder with Deadbolt x Outside Lever Locked	-	-	-	-	-	LEU
		Single Cylinder x Outside Lever Locked (Basic Function)	-	ML20905	8271	7971	L9092EU	DEU
		Single Cylinder x Both Levers Locked	-	-	-	-	L9093EU	-
		Double Cylinder x Outside Lever Locked	-	-	-	-	L9094EU	-
		Double Cylinder x Both Levers Locked	-	ML20912	8273	7973	L9095EU	WEU
		Single Cylinder with Deadbolt x Outside Lever Locked	-	-	-	-	-	TDEU
		Single Cylinder with Deadbolt x Both Levers Locked	-	ML20904	-	-	-	TWEU

Commercial Hardware

		Arrow	Yale	Competitors		
ANSI/ BHMA No.	AM/BM Series	8800 Series	Cal-Royal M Series	Dorma M9000 Series	Falcon MA Series	

Features							
	ANSI/BHMA Certified Operational Grade 1	A156.13	Yes	Yes	Yes	Yes	Yes
	ANSI/BHMA Certified Security Grade 1	A156.13	No	Yes	No	Yes	Yes
	UL Listed (3 Hour)	-	Yes	Yes	Yes	Yes	Yes
	Warranty	-	5 Years	10 Years	Unknown	10 Years	5 Years
	Buy American Act	-	Yes	Yes	Yes	Yes	Unknown
	Windstorm Certified	-	No	Yes	No	No	No
	Door Thickness	-	1 3/4"	1 3/4" - 3 1/2"	1 3/4"	1 3/4"-2"	1 3/8"-2 1/2"
	Hub Material	-	Steel	Sintered Steel	Unknown	Unknown	Steel
	Spindle Size	-	5/16"	3/8"	Unknown	5/16"	Unknown
	Through Connect	-	Yes	Yes	Unknown	Yes	No
	Field Reversible Handing	-	Yes	Yes	Yes	Yes	Yes
	Quick Change Hand/Locking	-	Yes	Yes	No	Yes	Yes
	Through-Bolt Trim	-	Yes	Yes	Unknown	Yes	Yes
Electrified Functions	-	Yes (2)	Yes (16)	Yes (Unknown)	Yes (4)	Yes (2)	
Electrified Options	-	Yes	Yes	Unknown	Yes	Unknown	
Deadbolt	Throw	-	1"	1"	1"	1"	1"
	Material	-	Stainless Steel	Stainless Steel	Brass With Hardened Steel Insert	Stainless Steel with Hardened Steel Insert	Stainless Steel with Hardened Steel Insert
	Roller Pins	-	No	No	Yes (2)	Yes (2)	Yes (2)
Latchbolt	Throw	-	3/4"	3/4"	3/4"	3/4"	3/4"
	Material	-	Stainless Steel	Stainless Steel	Brass	Stainless Steel	Stainless Steel
2pc. Anti Friction	-	Yes	No	No	Yes	Yes	
Number of Mechanical Functions	-	29	40	15	29	28	
Number of Finishes	-	9	17	7	9	6	
Lever Designs	-	7	9 Standard	4	6	4	
Knob Designs	-	2	2	1	2	1	
Decorative Designs	-	No	Reflections®	No	No	No	
Security or Patented Keying	-	Yes	Yes	No	Yes	Yes	
SFIC	-	Yes	Yes	Yes	Yes	Yes	

Finishes	Bright Brass, Clear Coated	605	Yes	Yes	Yes	Yes	Yes
	Satin Brass, Clear Coated	606	Yes	Yes	Yes	Yes	Yes
	Satin Brass, Blackened, Satin Relieved, Clear Coated	609	No	Yes	No	No	No
	Bright Bronze, Clear Coated	611	No	Yes	No	No	No
	Satin Bronze, Clear Coated	612	Yes	Yes	No	Yes	No
	Oil Rubbed Bronze	613	Yes	Yes	Yes	Yes	Yes
	Dark Oxidized Satin Bronze – equivalent	613E	Yes	Yes	No	No	No
	Satin Bronze, Blackened, Satin Relieved, Clear Coated	616	No	Yes	No	No	No
	Bright Nickel Plated, Clear Coated	618	No	Yes	No	No	No
	Satin Nickel Plated, Clear Coated	619	No	Yes	No	Yes	No
	Satin Nickel Plated, Blackened, Satin Relieved, Clear Coated	620	No	Yes	No	No	No
	Statuary Dark Bronze	624	No	No	No	No	No
	Bright Chrome Plated	625	Yes	Yes	Yes	Yes	Yes
	Satin Chrome Plated	626	Yes	Yes	Yes	Yes	Yes
	Bright Stainless Steel	629	Yes	Yes	Yes	Yes	No
	Satin Stainless Steel	630	Yes	Yes	Yes	Yes	Yes
	Black Powder Coat	693	No	Yes	No	No	No
Black Oxidized Bronze, Oil Rubbed	722	No	Yes	No	No	No	
MicroShield® Antimicrobial Coating	-	No	Yes	No	No	No	

Disclaimer: This is a comparison for like product. This is not a legal or binding document. Consult Mfg. Catalog for special detail and accuracy. N/A or Unknown means either Not Available or Information has not been located. Copyright © 2015, ASSA ABLOY Door Security Solutions, an ASSA ABLOY Group company. All rights reserved. Reproduction in whole or in part without the express written permission of ASSA ABLOY Door Security Solutions is prohibited.

Competitors				
Hager 3800 Series	Marks 5 Series	PDQ MR Series	Stanley QM100 Series	ANSI/BHMA No.

Yes	Yes	Yes	Yes	A156.13	ANSI/BHMA Certified Operational Grade 1
Yes	No	Yes (F&W Trim Only)	No	A156.13	ANSI/BHMA Certified Security Grade 1
Yes	Yes	Yes	Yes	-	UL Listed (3 Hour)
Lifetime	Lifetime	Lim. Lifetime	Lifetime	-	Warranty
No	No	Unknown	Unknown	-	Buy American Act
Yes	No	Yes	No	-	Windstorm Certified
1 3/8"-2 1/2"	1 3/8"-2 3/8"	1 3/4"-2 1/4"	1 3/4"-2 1/4"	-	Door Thickness
Unknown	Sintered Steel	Unknown	Unknown	-	Hub Material
Unknown	5/16" & 9/32"	Unknown	Unknown	-	Spindle Size
Yes	No	No	No	-	Through Connect
Yes	Yes	Yes	Yes	-	Field Reversible Handing
No	No	Yes	No	-	Quick Change Hand/Locking
Yes	Yes	Yes	Yes	-	Through-Bolt Trim
Yes (4)	Yes (2)	Yes (2)	No	-	Electrified Functions
Yes	Yes	Yes	No	-	Electrified Options
1"	1"	Unknown	Unknown	-	Throw
Stainless Steel No Insert	Stainless Steel with Hardened Steel Insert	Stainless Steel No Insert	Stainless Steel No Insert	-	Material
No	Yes (2)	No	No	-	Roller Pins
3/4"	3/4"	3/4"	3/4"	-	Throw
Stainless Steel	Stainless Steel	Stainless Steel	Stainless Steel	-	Material
Yes	Yes	Yes	Yes	-	2pc. Anti Friction
19	31	33	11	-	Number of Mechanical Functions
7	12	7	6	-	Number of Finishes
4	8	6	2	-	Lever Designs
0	1	1	0	-	Knob Designs
No	Yes	Yes	No	-	Decorative Designs
No	Yes	Yes	No	-	Security or Patented Keying
Yes	Yes	Yes	No	-	SFIC

Features

Deadbolt

Latchbolt

Yes	Yes	Yes	Yes	605	Bright Brass, Clear Coated
Yes	Yes	Yes	Yes	606	Satin Brass, Clear Coated
No	Yes	No	No	609	Satin Brass, Blackened, Satin Relieved, Clear Coated
No	No	No	No	611	Bright Bronze, Clear Coated
Yes	Yes	Yes	No	612	Satin Bronze, Clear Coated
Yes	Yes	Yes	Yes	613	Oil Rubbed Bronze
No	No	No	No	613E	Dark Oxidized Satin Bronze - equivalent
No	No	No	No	616	Satin Bronze, Blackened, Satin Relieved, Clear Coated
No	Yes	No	No	618	Bright Nickel Plated, Clear Coated
No	Yes	No	Yes	619	Satin Nickel Plated, Clear Coated
No	No	No	No	620	Satin Nickel Plated, Blackened, Satin Relieved, Clear Coated
No	Yes	No	No	624	Statuary Dark Bronze
Yes	Yes	Yes	Yes	625	Bright Chrome Plated
Yes	Yes	Yes	Yes	626	Satin Chrome Plated
No	Yes	No	No	629	Bright Stainless Steel
Yes	Yes	Yes	No	630	Satin Stainless Steel
No	No	No	No	693	Black Powder Coat
No	No	No	No	722	Black Oxidized Bronze, Oil Rubbed
No	Yes	Yes	No	-	MicroShield® Antimicrobial Coating

Finishes

Commercial Hardware *continued*

ANSI/ BHMA No.	Arrow	Yale	Competitors		
	AM/BM Series	8800 Series	Cal-Royal M Series	Dorma M9000 Series	Falcon MA Series

Functions		ANSI/BHMA No.					
		Arrow	Yale	Cal-Royal M Series	Dorma M9000 Series	Falcon MA Series	
No Cylinder	Bathroom Privacy with Thumbturn Each Side	-	-	8865FL	-	-	-
	Dummy – Trim One Side	-	08	855	M8170	M9001	MA12
	Dummy – Trim Both Sides	-	09	836A/B	-	M9002	MA18
	Exit – Inside Lever and Thumbturn x No Outside Operation	-	-	8835FL	-	-	-
	Exit – Inside Lever x No Outside Operation, Aux deadlatch	-	07	-	-	-	-
	Exit or Communicating	F31	-	8828FL	-	M9025	MA161
	Passage or Closet Latch	F01	01	8801FL	M8010	M9010	MA101
	Privacy with Coin Turn	-	-	-	-	-	-
	Privacy with Indicator	-	-	IND Suffix	-	-	-
	Privacy, Bedroom or Bath	F02	-	-	M8040	-	MA301
	Privacy, Bedroom or Bath (No Deadbolt)	F22	26	8862FL	-	M9040	MA321
	Privacy, Bedroom or Bath (Simultaneous Retraction)	F19	02	8802FL	M8040	M9940	MA311
	Single Cylinder	All Purpose – Single Cylinder with Thumbturn x Holdback x No Outside Trim	-	-	8834FL	-	-
Apartment Corridor Door		F20	20	8847FL	-	M9953	MA531
Apartment, Exit or Public Toilet – Thumbturn		F10	21	-	-	-	MA621
Assisted Living		-	-	-	-	-	-
Classroom		F05	17	8808FL	M8070	M9070	MA561
Classroom Deadlock		F29	44	8813ST	-	M9963	MA911
Classroom or Office with Thumbturn Inside		-	-	8809FL	-	-	-
Classroom with Holdback		F06	-	8824FL	-	M9076	MA551
Deadlock – Single Cylinder with Thumbturn		F17	41	8815	-	M9960	MA941
Deadlock – Single Cylinder x No Thumbturn		F18	40	8814	-	M9961	MA921
Detention		-	-	8831FL	-	-	-
Dormitory or Exit – Single Cylinder x Simultaneous Retraction x No Toggle		F13	19	8822FL	M8456	M9956	MA571
Dormitory or Exit – Single Cylinder x Simultaneous Retraction x Rigid Outside Lever		-	-	-	-	-	MA641
Dormitory or Exit – Single Cylinder x Simultaneous Retraction x Toggle		F12	11	8867FL	M8453	-	MA531
Dormitory or Storeroom		-	-	8861FL	-	-	-
Entry – With Toggle		F04	22	8807FL	M8050	M9050	MA521
Entry – With Toggle and Deadbolt		-	-	-	-	-	-
Exit – Single Cylinder x No Outside Trim		-	-	8833FL	-	-	-
Front Door		F08	21	-	-	-	MA621
Hotel Guest		F15	16	8820FL	M8485	M9985	MA451
Hotel/Motel with Toggle		-	-	8827FL	-	-	-
Hotel/Motel x No Indicator		-	-	8832FL	-	-	-
Institutional Privacy		F26	27	-	-	-	-
Office		-	-	-	-	-	-
Privacy with Outside Cylinder, Rigid Lever & Deadbolt with Indicator		-	-	-	-	M9986	-
Room Door		F21	13	8860FL	M8473	M9973	MA541
Storeroom – Single Cylinder x No Aux Latch		-	24	-	-	-	-
Storeroom or Closet – Single Cylinder with Deadbolt		-	-	-	M8465	-	-
Storeroom or Closet – Single Cylinder with Deadbolt x Rigid Outside Trim		-	-	-	-	M9980	-
Storeroom or Closet – Single Cylinder with Deadbolt, No Inside Trim		-	-	8823FL	-	-	-
Storeroom or Closet – Single Cylinder x No Deadbolt		F07	12	8805FL	M8080	M9080	MA581
Storeroom or Closet – Single Cylinder x No Deadbolt x No inside trim		-	-	8829FL	-	-	-
Vestibule – Single Cylinder with Stopworks	-	23	-	-	-	-	

Disclaimer: This is a comparison for like product. This is not a legal or binding document. Consult Mfg. Catalog for special detail and accuracy. N/A or Unknown means either Not Available or Information has not been located. Copyright © 2015, ASSA ABLOY Door Security Solutions, an ASSA ABLOY Group company. All rights reserved. Reproduction in whole or in part without the express written permission of ASSA ABLOY Door Security Solutions is prohibited.

Competitors				
Hager 3800 Series	Marks 5 Series	PDQ MR Series	Stanley QM100 Series	ANSI/ BHMA No.

-	-	MR174	-	-	Bathroom Privacy with Thumbturn Each Side	No Cylinder	
3817	-	MR211	-	-	Dummy – Trim One Side		
3827	-	MR205	-	-	Dummy – Trim Both Sides		
-	-	-	-	-	Exit – Inside Lever and Thumbturn x No Outside Operation		
-	-	-	-	-	Exit – Inside Lever x No Outside Operation, Aux deadlatch		
-	EX	-	-	F31	Exit or Communicating		
3810	N	MR126	QMS/QME130	F01	Passage or Closet Latch		
3844	-	-	-	-	Privacy with Coin Turn		
3896	-	-	-	-	Privacy with Indicator		
-	L	MR178	-	F02	Privacy, Bedroom or Bath		
3840	LJ	MR176	-	F22	Privacy, Bedroom or Bath (No Deadbolt)		
-	LF	MR179	QMS/QME145	F19	Privacy, Bedroom or Bath (Simultaneous Retraction)		
-	-	-	-	-	All Purpose – Single Cylinder with Thumbturn x Holdback x No Outside Trim		
3853	FD	MR162	QMS/QME154	F20	Apartment Corridor Door		Single Cylinder
-	A	MR117	-	F10	Apartment, Exit or Public Toilet – Thumbturn		
-	-	MR149	-	-	Assisted Living		
3870	J	MR148	QMS/QME160	F05	Classroom		
3863	SC	MR134	-	F29	Classroom Deadlock		
-	-	-	-	-	Classroom or Office with Thumbturn Inside		
-	JM/JR	MR113	-	F06	Classroom with Holdback		
3860	P	MR132	-	F17	Deadlock – Single Cylinder with Thumbturn		
3864	S	MR131	-	F18	Deadlock – Single Cylinder x No Thumbturn		
-	-	-	-	-	Detention		
3856	FW	MR136	QMS/QME152	F13	Dormitory or Exit – Single Cylinder x Simultaneous Retraction x No Toggle		
-	-	-	-	-	Dormitory or Exit – Single Cylinder x Simultaneous Retraction x Rigid Outside Lever		
-	F	-	-	F12	Dormitory or Exit – Single Cylinder x Simultaneous Retraction x Toggle		
-	-	-	-	-	Dormitory or Storeroom		
3850	E	MR116	QMS/QME150	F04	Entry – With Toggle		
-	-	MR154	-	-	Entry – With Toggle and Deadbolt		
-	-	-	-	-	Exit – Single Cylinder x No Outside Trim		
-	A	MR117	-	F08	Front Door		
-	H	-	-	F15	Hotel Guest		
-	-	-	-	-	Hotel/Motel with Toggle		
-	-	-	-	-	Hotel/Motel x No Indicator		
-	-	-	-	F26	Institutional Privacy		
-	-	MR181	-	-	Office		
-	-	-	-	-	Privacy with Outside Cylinder, Rigid Lever & Deadbolt with Indicator		
-	B	MR135	-	F21	Room Door		
-	-	-	-	-	Storeroom – Single Cylinder x No Aux Latch		
-	-	MR139	-	-	Storeroom or Closet – Single Cylinder with Deadbolt		
3881	-	MR141	-	-	Storeroom or Closet – Single Cylinder with Deadbolt x Rigid Outside Trim		
-	-	-	-	-	Storeroom or Closet – Single Cylinder with Deadbolt, No Inside Trim		
3880	EW	MR115	QMS/QME170	F07	Storeroom or Closet – Single Cylinder x No Deadbolt		
-	-	-	-	-	Storeroom or Closet – Single Cylinder x No Deadbolt x No inside trim		
-	-	-	-	-	Vestibule – Single Cylinder with Stopworks		

Functions

Single Cylinder

Commercial Hardware *continued*

	Arrow	Yale	Competitors		
ANSI/ BHMA No.	AM/BM Series	8800 Series	Cal-Royal M Series	Dorma M9000 Series	Falcon MA Series

Functions		ANSI/BHMA No.					
		Arrow	Yale	Cal-Royal M Series	Dorma M9000 Series	Falcon MA Series	
Double Cylinder	All Purpose - Double Cylinder x Holdback x No Outside Trim	-	-	8834-2FL	-	-	-
	All Purpose - Double Cylinder x No Trim	-	-	8833-2	-	-	-
	Apartment, Exit or Public Toilet - Double Cylinder x No Deadbolt	F09	32	8817-2FL	M8060	M9060	MA381
	Asylum or Institutional	F30	33	8830-2FL	M8082	M9082	MA411
	Asylum or Institutional - Classroom Deadlock x Double Cylinder	-	-	8813ST-2	-	-	-
	Asylum or Institutional - Double Cylinder Storeroom with Toggle x Deadbolt	F35	34	-	-	M9958	-
	Classroom Security Intruder - No Deadbolt, Double Cylinder	-	-	-	-	-	-
	Classroom Security Intruder - With Deadbolt - Outside Trim Remains Locked	-	38	8818-2FL	-	-	-
	Deadlock - Double Cylinder	F16	42	8814-2	-	M9962	MA931
	Dormitory or Exit - Double Cylinder	F11	-	-	-	M9957	-
	Double Cylinder x No Deadbolt x Outside Trim with Holdback	-	-	-	-	M9077	-
	Institutional With Deadbolt x Double Cylinder	-	-	-	-	-	-
	Intruder Deadbolt	F34	-	8812-2FL	-	M9967	MA431
	Intruder Deadbolt x Double Cylinder	F33	-	8811-2FL	-	M9968	-
	Intruder Latchbolt	F32	37	8808-2FL	-	M9071	MA441
	Store Door	F14	31	8860-2FL	M8466	M9966	MA371
Electrified Options	Request to Exit Switch	-	RE	Suffix-REX	-	Suffix-REX	-
	Latchbolt Monitor	-	LM	Suffix-LBM	-	-	-
	Deadbolt Monitor	-	-	Suffix-DBM	-	-	-
	Security Monitoring	-	SM	-	-	-	-
Fail Safe	No Cylinder x Outside Lever Unlocked	-	-	8880FL	-	-	-
	No Cylinder x Both Levers Unlocked	-	-	8884FL	-	-	-
	Single Cylinder x Outside Lever Unlocked (Basic Function)	-	177/179	8890FL	Upon Request	M9080EL	MA851EL
	Double Cylinder x Both Levers Unlocked	-	-	8894-2FL	-	M9082EL	-
	Single Cylinder with Deadbolt x Outside Lever Unlocked	-	-	8896FL	-	-	-
	Double Cylinder with Deadbolt x Outside Lever Unlocked	-	-	8896-2FL	-	-	-
	Single Cylinder with Deadbolt x Both Levers Unlocked	-	-	8898FL	-	-	-
Fail Secure	Double Cylinder with Deadbolt x Both Levers Unlocked	-	-	8898-2FL	-	-	-
	No Cylinder x Outside Lever Locked	-	-	8881FL	-	-	-
	No Cylinder x Both Levers Locked	-	-	8885FL	-	-	-
	Single Cylinder x Outside Lever Locked (Basic Function)	-	181/183	8891FL	Upon Request	M9080EU	MA881EU
	Double Cylinder x Both Levers Locked	-	-	8895-FL	-	M9082EU	-
	Single Cylinder with Deadbolt x Outside Lever Locked	-	-	8897FL	-	-	-
	Double Cylinder with Deadbolt x Outside Lever Locked	-	-	8897-2FL	-	-	-
	Single Cylinder with Deadbolt x Both Levers Locked	-	-	8899FL	-	-	-
Double Cylinder with Deadbolt x Both Levers Locked	-	-	8899-2FL	-	-	-	

Competitors				
Hager 3800 Series	Marks 5 Series	PDQ MR Series	Stanley QM100 Series	ANSI/ BHMA No.

-	-	-	-	-	All Purpose – Double Cylinder x Holdback x No Outside Trim	Double Cylinder
-	-	-	-	-	All Purpose – Double Cylinder x No Trim	
3861	G	MR186	-	F09	Apartment, Exit or Public Toilet – Double Cylinder x No Deadbolt	
3882	WW	MR138	QMS/QME172	F30	Asylum or Institutional	
-	-	-	-	-	Asylum or Institutional – Classroom Deadlock x Double Cylinder	
-	AC	-	-	F35	Asylum or Institutional – Double Cylinder Storeroom with Toggle x Deadbolt	
-	GG	-	-	-	Classroom Security Intruder – No Deadbolt, Double Cylinder	
-	-	-	-	-	Classroom Security Intruder – With Deadbolt – Outside Trim Remains Locked	
3862	T	MR133	-	F16	Deadlock – Double Cylinder	
-	FA	MR158	QMS/QME158	F11	Dormitory or Exit – Double Cylinder	
-	GR	MR114	-	-	Double Cylinder x No Deadbolt x Outside Trim with Holdback	
-	-	MR128	-	-	Institutional With Deadbolt x Double Cylinder	
-	FC	MR157	-	F34	Intruder Deadbolt	
3857	FX	MR159	-	F33	Intruder Deadbolt x Double Cylinder	
-	GC	-	QMS/QME162	F32	Intruder Latchbolt	
-	C	MR137	QMS/QME174	F14	Store Door	
RX	Suffix-W10	Suffix-REX	-	-	Request to Exit Switch	
LM	-	-	-	-	Latchbolt Monitor	
DPM	-	-	-	-	Deadbolt Monitor	
-	-	-	-	-	Security Monitoring	
-	-	-	-	-	No Cylinder x Outside Lever Unlocked	Fail Safe
-	-	-	-	-	No Cylinder x Both Levers Unlocked	
3380EL	EL	MR199SAF	-	-	Single Cylinder x Outside Lever Unlocked (Basic Function)	
3382EL	-	-	-	-	Double Cylinder x Both Levers Unlocked	
-	-	-	-	-	Single Cylinder with Deadbolt x Outside Lever Unlocked	
-	-	-	-	-	Double Cylinder with Deadbolt x Outside Lever Unlocked	
-	-	-	-	-	Single Cylinder with Deadbolt x Both Levers Unlocked	
-	-	-	-	-	Double Cylinder with Deadbolt x Both Levers Unlocked	
-	-	-	-	-	No Cylinder x Outside Lever Locked	Fail Secure
-	-	-	-	-	No Cylinder x Both Levers Locked	
3380EU	EU	MR199SEC	-	-	Single Cylinder x Outside Lever Locked (Basic Function)	
3382EU	-	-	-	-	Double Cylinder x Both Levers Locked	
-	-	-	-	-	Single Cylinder with Deadbolt x Outside Lever Locked	
-	-	-	-	-	Double Cylinder with Deadbolt x Outside Lever Locked	
-	-	-	-	-	Single Cylinder with Deadbolt x Both Levers Locked	
-	-	-	-	-	Double Cylinder with Deadbolt x Both Levers Locked	

Functions

ASSA ABLOY is the global leader in door opening solutions, dedicated to satisfying end-user needs for security, safety and convenience

ASSA ABLOY

Disclaimer: This is a comparison for like product. This is not a legal or binding document. Consult manufacturers catalog for special detail and accuracy. N/A or unknown means either Not Available or information has not been located.

Arrow
1-800-839-3157
www.arrowlock.com

Corbin Russwin
1-888-607-5703
www.corbinrusswin.com

SARGENT
1-800-727-5477
www.sargentlock.com

Yale
1-800-438-1951
www.yalelocks.com

ASSA ABLOY Door Security Solutions

110 Sargent Drive
New Haven, CT 06511
www.assaabloydss.com
1.800.DSS.EZ4U (377.3948)

Copyright © 2015, ASSA ABLOY Door Security Solutions, an ASSA ABLOY Group company. All rights reserved. Reproduction in whole or in part without the express written permission of ASSA ABLOY Door Security Solutions is prohibited.