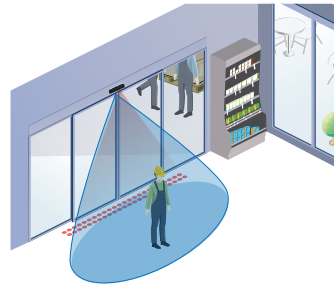
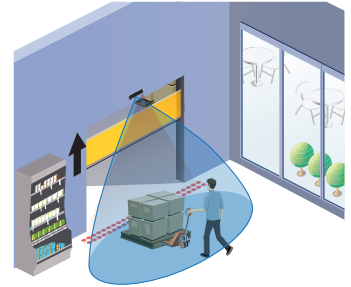
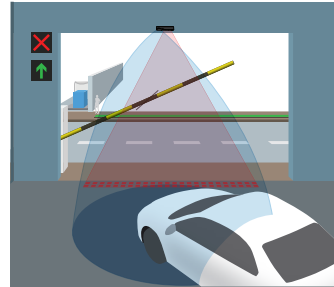


IXIO-DT1 INDUSTRIAL

ACTIVATION AND SAFETY SENSOR FOR INTERIOR INDUSTRIAL DOORS



PRIMARY APPLICATIONS



DESCRIPTION

BEA's dual technology IXIO-DT1 Industrial is the premier activation and safety sensor on the market.

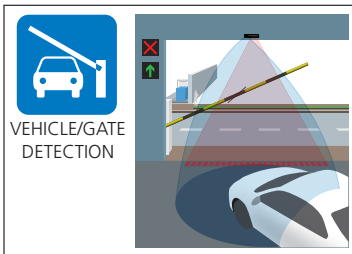
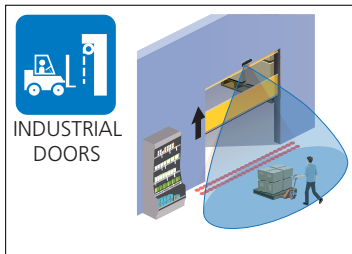
The IXIO-DT1 Industrial is a highly flexible and user-friendly solution for interior industrial doors, vehicle gate detection and off-door automation.

This cutting-edge sensor has earned an impressive list of credentials and certifications, including UL, FCC and IP54.

FEATURES & BENEFITS

- Ten microwave activation sensitivity settings and three infrared safety immunity settings
- Ability to distinguish between approaching and departing traffic
- Two 24 spot, high-density, infrared safety curtains providing precise presence detection
- Four visible red alignment spots are projected on the ground to assist in precise IR curtain adjustment
- Intelligent programming and troubleshooting via a menu-driven LCD
- On-board microprocessor optimizes data analysis, monitors sensor performance and enables system integration
- Fully monitored internally, capable of external monitoring
- 360 inch (30 ft) cable for larger/higher doors

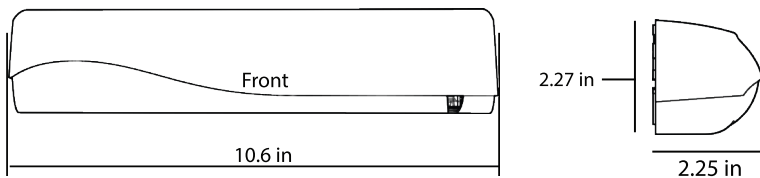
APPLICATIONS



TECHNICAL SPECIFICATIONS

Technology	Microwave Doppler Radar	Active Infrared
Detection Mode	Motion	Presence
Transmitter Frequency	24.150 GHz	N/A
Transmitter Radiated Power	< 20 dBm EIRP	N/A
Transmitter Power Density	< 5 mW/cm ²	N/A
Spot Size	N/A	2 in x 2 in
Max. Number of Spots	N/A	24 per curtain
Max. Number of Curtains	N/A	2
Output	Electro-mechanical-relay (potential and polarity free)	Solid-state-relay (potential and polarity free)
Max. Contact Power	15 Watts	N/A
Max. Contact Current	1 A	400 mA
Max. Contact Voltage	30 VDC	42 VDC
Hold Time	Microwave: 0.5 to 9 s (user adjustable)	Infrared: 0.3 s if < 4 s*, 1 s if ≥ 4 s* (*if in detection for)
Test Input	N/A	Sensitivity: Low:<1 V; High:> 10V (max.30V) Response time on test request: typical:<5ms
Supply Voltage	12 to 24 VAC 50/60 Hz 12 to 30 VDC	
Power Consumption	< 2.5 W	
Mounting Height	78 in - 138 in (6.5 ft - 11.5 ft)	
Temperature Range	Sensor: -31°F to +131°F LCD: 14°F to +131°F 0 to 95% relative humidity, non condensing	
Degree of Protection	IP54	
Norm Conformance	R&TTE 1999/5/EC; EMC 2004/108/EC; MD 2006/42/EC; RoHS 2002/95/EC	
Dimensions (D x W x H)	2.25 in x 10.6 in x 2.27 in	
Cable Length	360 in (30 ft)	

DIMENSIONAL DRAWINGS



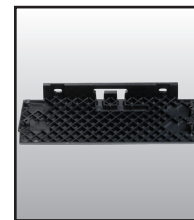
RELATED PRODUCTS



10XI0ST INDUS
IR ONLY INDUSTRIAL
SENSOR



10XI0DT1V
DUAL TECHNOLOGY
SENSOR WITH VIDEO



10IMB
MOUNTING BRACKET
ADAPTER



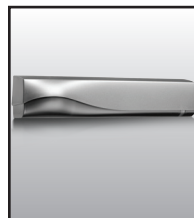
10IRA
RAIN
ACCESSORY



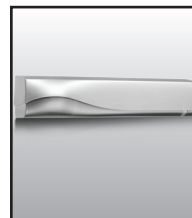
10ICA
FLUSH MOUNT
CEILING ADAPTER



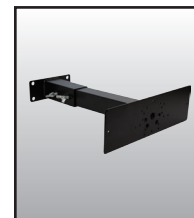
35.1286
BLACK REPLACEMENT
COVER



35.1303
SILVER REPLACEMENT
COVER



35.1302
WHITE REPLACEMENT
COVER



10MINIBRACKET
SHORT ADJUSTABLE
MOUNTING BRACKET



10REMOTE
BEA UNIVERSAL
REMOTE CONTROL

www.BEAinc.com

© 2015 BEA, Inc. All rights reserved.

IXIO-DT1 INDUSTRIAL

ACTIVATION AND SAFETY SENSOR FOR INTERIOR INDUSTRIAL DOORS

79.0160.08

20151005

BEA, Inc.
RIDC Park West
100 Enterprise Drive
Pittsburgh, PA 15275-1213

Customer Service: 800.523.2462
Technical Support: 800.407.4545

