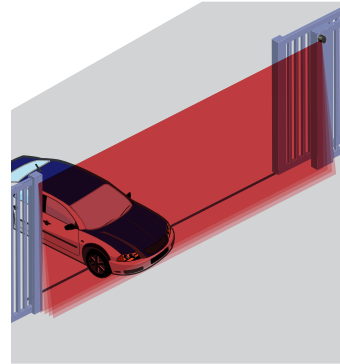


# LZR<sup>®</sup>-i30

## LASER SCANNER FOR INDUSTRIAL DOOR AND GATE SAFETY



### PRIMARY APPLICATIONS



Maximum Detection  
Zone of 360 in x 360 in  
(30 ft x 30 ft)

### DESCRIPTION

BEA's LZR-i30 is a laser-based time-of-flight sensor. This high precision technology ensures accurate object detection. The product configuration provides four laser-based curtains offering a three dimensional safety zone.

The sensor is designed for the detection of people and vehicles, in both indoor and outdoor environments. The detection accuracy makes this sensor ideal for high performance industrial doors, vehicle flow safety, perimeter protection and variety of applications.

The LZR-i30 is housed in a NEMA 4 rated enclosure and can be installed in outdoor, industrial and other harsh environments. Adjustments can be made using a BEA remote control and three reference LED spots to ensure the detection zone is accurate and precise.

### FEATURES & BENEFITS

- Four curtains of detection each capable of 360 in x 360 in x 36 in (30 ft x 30 ft x 3 ft)
- Detects objects as small as 2 inches at 30 feet away, depending on application
- Degree of protection: NEMA 4 / IP65
- Monitoring capability ensures communication with external devices
- Has the ability to ignore dynamic ground conditions and extreme weather
- Visible LEDs, 3 for setup

## APPLICATIONS

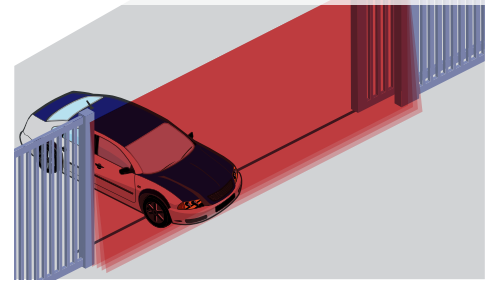
### AUTOMATIC INDUSTRIAL DOORS



### VIRTUAL PUSH PLATE



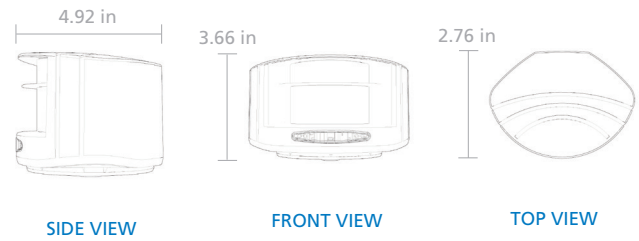
### GATES AND BARRIERS



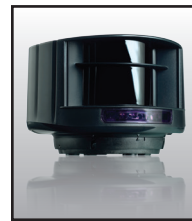
## TECHNICAL SPECIFICATIONS

<b>Technology</b>	LASER scanner, time-of-flight measurement
<b>Detection Mode</b>	Presence (EN 12453 Typ. E)
<b>Max. Detection Range</b>	360 in x 360 in x 36 in (30ft x 30ft x 3ft) per curtain
<b>Detection Plane</b>	4 curtains per sensor, curtain spread dependent on mounting height
<b>Remission Factor</b>	> 2%
<b>Emission Characteristics</b> IR LASER Red Visible LASER	Wavelength 905nm; maximum output pulse power 75W Wavelength 650nm; maximum output CW power 3mW
<b>Supply Voltage</b>	12 – 35 VDC @ Sensor Terminal
<b>Peak Current at Power-On</b>	1.8 A (Max. 80 ms @ 35 V)
<b>Power Consumption</b>	< 5W
<b>Response Time</b>	Min 20ms; Max 80ms
<b>Output</b> Max. Switching Voltage Max. Switching Current	2 electronic relays (galvanic isolated – polarity free) 35V DC / 24V AC 80 mA (resistive)
<b>LED-Signal</b>	1 Blue LED: Status « Power-on » 1 Orange LED: Status « Error » 2 Red/Green LEDs: Status « Detection/Output »
<b>Dimensions (W×L×H)</b>	4.92 in × 3.66 in × 2.76 in Mounting Bracket (10LBA) adds 0.5 in
<b>Cable Length</b>	360 in (30 ft)
<b>Material</b>	PC/ASA
<b>Color</b>	Black
<b>Rotation Angle on Bracket</b>	±5° (Lockable)
<b>Tilt Angle on Bracket</b>	±3°
<b>Degree of Protection</b>	NEMA 4 / IP65
<b>Temperature Range</b>	-22°F to +140°F if powered
<b>Humidity</b>	0–95% non-condensing
<b>Vibrations</b>	< 2G
<b>Pollution on Front Screens</b>	Max. 30%; Homogenous
<b>Cut Target</b>	< 11.81 in × 7.87 in × 27.56 in @ 276 in (EN 12445 test body A)
<b>Norm Conformance</b>	2006/95/EC: LVD; 2002/95/EC : RoHS; EN 60825-1; EN 61000-6-1: EMC-Commercial Level; EN 61000-6-2: EMC - Industrial level; 9.9 < 1999/5/EC: R&TTE; 2004/108/EEC: EMC; 2006/42/EC: MD EN 60950-1; EN 60529; IEC 60825; EN ISO 13849-1 Performance Level "c", CAT 2; EN 12445; EN 12453 Typ E

## DIMENSIONAL DRAWINGS



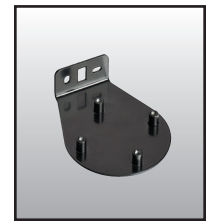
## RELATED PRODUCTS



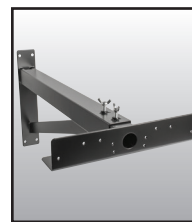
**10LZRS600**  
LZR-S600 SENSOR



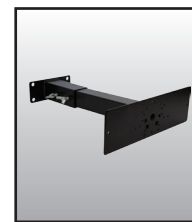
**10PS12-24**  
110-1224 VAC  
POWER SUPPLY



**10LBA**  
LZR MOUNTING  
BRACKET ACCESSORY



**10INDBRACKET**  
INDUSTRIAL  
MOUNTING BRACKET



**10MINIBRACKET**  
SHORT ADJUSTABLE  
MOUNTING BRACKET



**10REMOTE**  
BEA UNIVERSAL  
REMOTE CONTROL

www.BEAinc.com

© 2015 BEA, Inc. All rights reserved.

**LZR®-I30**

LASER SCANNER FOR INDUSTRIAL DOOR AND GATE SAFETY

79.0006.10

20151005

BEA, Inc.  
RIDC Park West  
100 Enterprise Drive  
Pittsburgh, PA 15275-1213

Customer Service: 800.523.2462  
Technical Support: 800.407.4545

