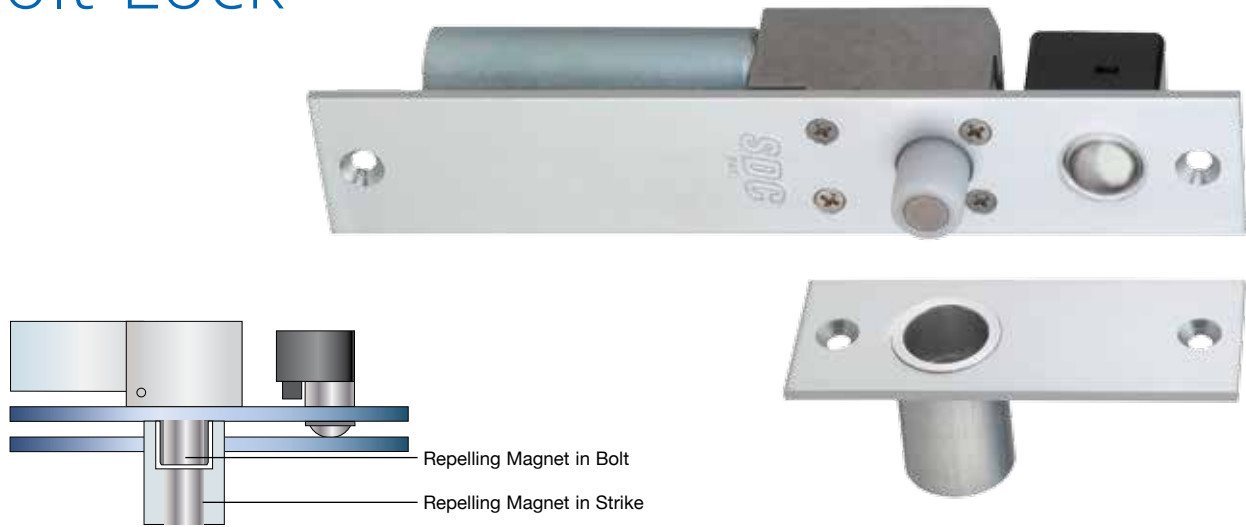


# FS23M Dual Failsafe Spacesaver® Bolt Lock



The **FS23M** dual failsafe feature is available only from SDC. Conventional failsafe locking bolts rely solely on a spring to retract the bolt while the FS23M bolt will unlock with or without the assistance of the spring. This is the only electric bolt lock listed by the California State Fire Marshal for locking of perimeter entrance and emergency exit doors after-hours.

## FEATURES

### DUAL FAILSAFE

The SDC designed and patented **FS23M** is locked when energized. Recommended for safety applications, the door unlocks automatically when power is interrupted by the access control, power failure or a signal from the fire life safety system.

Large repelling magnets are located within the bolt and strike. When power is interrupted the bolt is retracted and held back by a spring. Should the spring fail, repelling magnets eject the bolt from the strike, unlocking the door.

While designed for perimeter applications the performance characteristics of the **FS23M** make it the first choice for all interior or exterior openings where the use of an electric bolt lock is applicable.

### SPECIFICATION GRADE SOLENOIDS

All Spacesaver® lock solenoids are manufactured by SDC to precision specifications. SDC solenoids are capable for superior overall performance in both force and longevity, providing years of service compared to other manufacturers off-the-shelf or commercial grade designs.

### BOLT DESIGN

The bolt is made of a lightweight and extremely resilient nylon material. While lack of weight enables the magnet to eject the bolt, an inherent feature is powerful and smooth operation. The longevity of this lock is unsurpassed compared to electromechanical locks with steel bolts with abrasive metal to metal interaction.

Additional bolt features include:

- 2500lbs Bolt Strength
- Hardened Magnet Core, Resistant to Metal Cutting Saws



 <b>MODELS</b>	
 <b>FS23MI</b>	Dual Failsafe 12/24VDC
<b>FS23MWDI</b>	Dual Failsafe 12/24VDC, specifically for wood frames



Figure 3A, 3B, 3C, 3D: Typical Frame Header or Side Jamb Installation

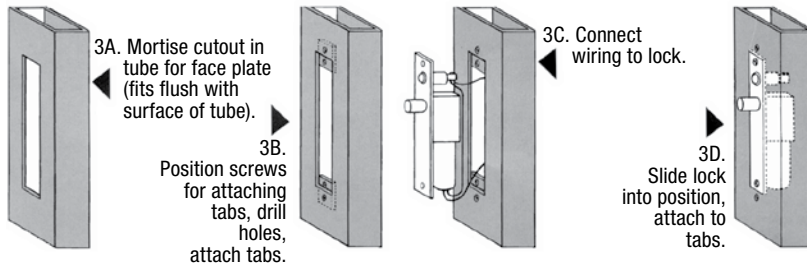
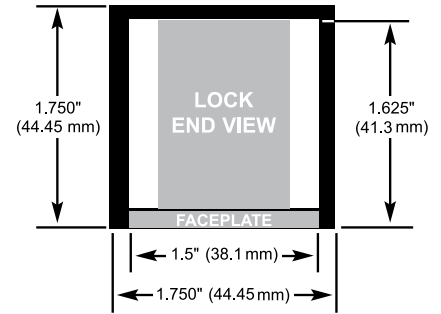


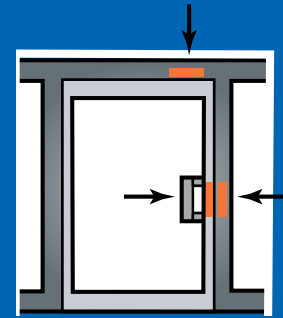
Figure 4: End View



## SPECIFICATIONS

<b>Face Plate</b>	8"L x 1-1/2"W x 1/8"D - standard 8-1/2"L x 1-1/2"W x 1/8"D - wood
<b>Strike</b>	4"L x 1.5"W x 1-9/16"D
<b>Frame Inner Dimension Requirements</b>	8"L x 1-1/2"W x 1-5/8"D See figure 4
<b>Bolt Material</b>	Nylon with Center Magnet
<b>Bolt Diameter</b>	5/8"
<b>Bolt Throw</b>	5/8"
<b>Mounting Tabs</b>	Two Aluminum Mounting Tabs Are Provided for Easy Lock Installation See figure 3B
<b>Dual Voltage Coil</b>	0.45 Amp @ 24VDC Continuous Duty, 0.9 Amp @ 12VDC Continuous Duty
<b>Weight</b>	1.5 lbs

## INSTALLATION



SDC Spacesaver® locks may be mounted in the frame header, side jamb or door lock stile.

PRODUCT SKU SAMPLE: **FS23MI C D B**



## HOW TO ORDER

### 1| SPECIFY MODEL

<b>FS23MI</b>	Dual Failsafe 12/24VDC
<b>FS23MWDI</b>	Dual Failsafe 12/24VDC, specifically for wood frames

### 2| SPECIFY FINISH

**V** 628 Clear Anodized Aluminum (Standard)

#### SPECIAL FINISHES:

- C** 605 Bright Brass
- D** 606 Dull Brass
- F** 611 Bright Bronze
- G** 612 Dull Bronze
- H** 613 Oil Rubbed Bronze
- P** 625 Bright Chrome
- Q** 626 Dull Chrome
- U** 629 Satin Stainless Steel
- Y** 335 Black Anodized

### 3| SPECIFY OPTIONS

- B** Magnetic Bolt Status Switch  
SPDT 0.25 Amp @ 30VDC  
Indicates bolt locked and bolt unlocked.
- D** Mechanical Door Position Switch  
SPDT 5 Amps @ 30VDC  
Integral to the auto relock ball switch assembly.  
Indicates, door closed and door open. Recommended for minimum security applications only

