



High security data, asset and lab doors

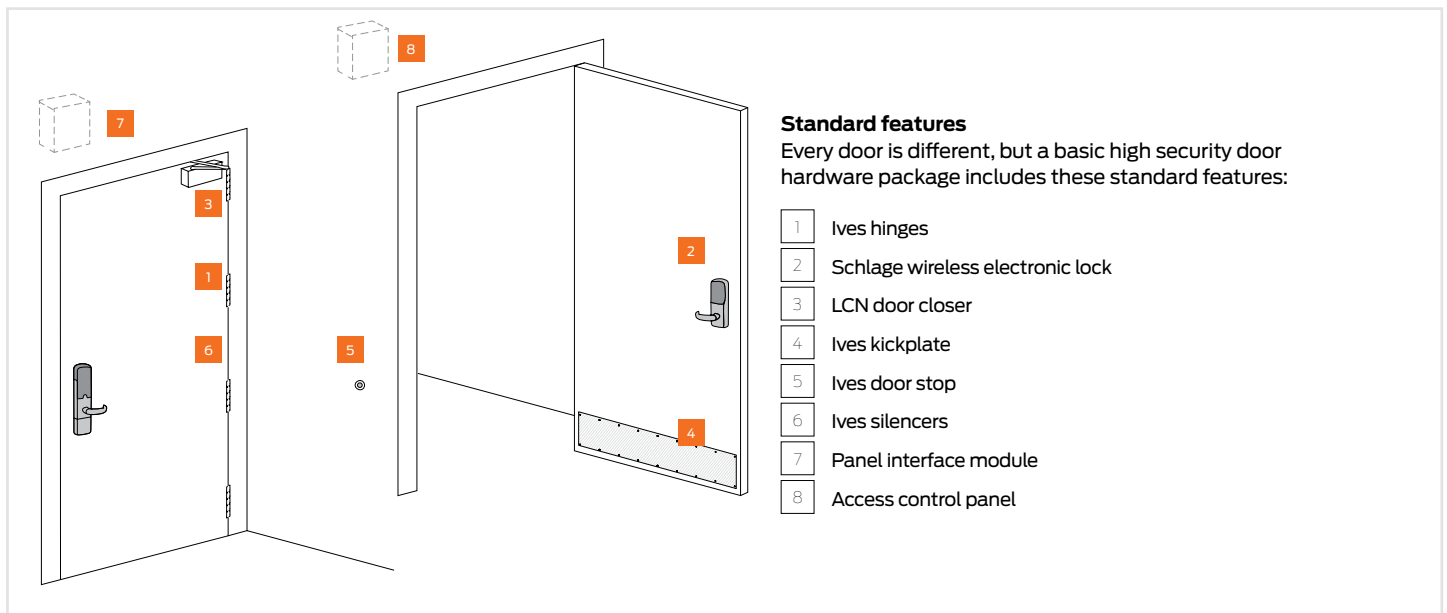
Education solutions

Restricted areas like laboratories, records offices and server equipment rooms typically have a limited number of users, but require a very high level of security to protect private, dangerous or expensive materials, goods or information.

In the education setting, these doors also require quick, reliable lockdown, while still meeting local and state building codes for fire and life safety.

High security door operational requirements:

- Door is normally secured
- Access is possible by valid credential or keypad
- Free egress is available at all times



Innovative solutions for high security openings

An effective high security door is the result of the right products and technology at work. Allegion recommends:

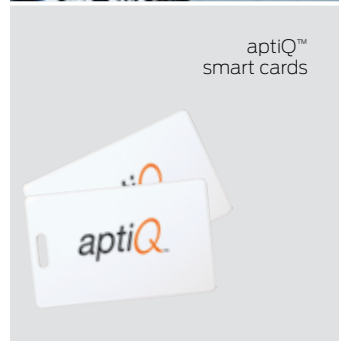
aptiQ™ smart cards

- Smart cards employ MIFARE and MIFARE DESFire™ EV1 technology, making them an ideal credential for high security openings.
- These cards can also store data about the user, and integrate with other systems in place at a school or university for services like cashless vending.
- aptiQ smart cards operate on a 13.56 MHz frequency, and utilize high security encryption to provide optimum security for your data.

Schlage® Wireless AD-400 Series

- The AD-Series wireless locks combine all the components required for a complete access control system into one integrated design that includes the electrified lock, credential reader, request-to-enter/-exit sensors, door position switch and more.
- The AD-400 utilizes patent-pending Wake-Up On Radio™ technology to enable real-time centralized lockdown of a school.
- It can be customized with a variety of credential readers, including keypad, magnetic stripe or multi-technology for proximity and smart cards.
- The AD-Series was designed on an open architecture platform so that it can easily be integrated into virtually any access control system via Wiegand, Clock & Data or RS-485.

Note: These security solutions are designed only as a guide and do not take into consideration local codes and regulations that may be in place. Please contact your local Allegion representative to design a specification to meet your unique needs.



aptiQ™ smart cards



Schlage® AD-400 locks



Start with Allegion

Call **877-671-7011**

- Speak to a specification writer about building standards, code compliance or specification assistance
- Speak with a sales associate about our solutions, grant funding or seamless integration with your one card system

Visit **www.allegion.com/us/industries/education**

- Access our online security and safety self-assessment tools
- Find information about our products and services
- Review a case study about how a community college got the upper hand on security



About Allegion

Allegion (NYSE: ALLE) creates peace of mind by pioneering safety and security. As a \$2 billion provider of security solutions for homes and businesses, Allegion employs more than 8,000 people and sells products in more than 120 countries across the world. Allegion comprises 27 global brands, including strategic brands CISA®, Interflex®, LCN®, Schlage® and Von Duprin®. For more, visit **www.allegion.com**.