

TABLE OF CONTENTS

A		P	
Adjustable Angle Bracket (2941/2942)	6	Power Supply.....	3-4
Angle Brackets (2950 Series)	9	Power Transfers	11
Armature Mounting Plates (2950 Series).....	7-8	Pressure Sense Bars.....	10
C		Proximity Cards & Keys... ..	4
Coordinator Mounting Bracket (2950 Series)	8	S	
Concealed Magnetic Contact	11	Spacer Brackets (2950 Series).....	7
D		T	
Delayed Egress Magnetic Lock.....	9-10	Top Jamb Kits (2941/2942)	6
E		Top Jamb Kits (2950 Series)	7
Egress Sensors.....	11	U	
Electric Strikes	5-6	Universal Brackets (2950 Series)	7
Exit Switches	10	Underdesk Switch.....	11
Emergency Door Release.....	11		
F			
Filler Bars (2941/2942 Series)	6		
Filler Bars (2950 Series)	8		
G			
Gang Boxes	11		
Glass Door Kits (2941/2942)	6		
Glass Door Kits (2950 Series)	7		
K			
Key Swtich.....	3		
Keypads.....	4		
L			
Low Energy Power Operator	12-20		
M			
Magnetic Locks (2941/2942 Series).....	6		
Magnetic Locks (2950 Series).....	6-7		
Magnetic Shear Locks (2961/2965)	9		
Magnetic Switches	11		
O			
Outdoor Shrouds	4,11		



Electrified Products

TABLE OF CONTENTS- Low Energy Power Operators

8200 Series Low Energy Power Operators 15-16

8400 Series Low Energy Power Operators 12-14

A

Actuators 17-19
Arm Assemblies (8200 Series) 16
Arm Assemblies (8400 Series) 13

B

Battery Backup (8200 Series) 15
Bollard Posts 19

C

Covers (8400 Series) 13-14

D

Drop Plates (8400 Series) 13

H

Handheld Programmer (8200 Series) 15

M

Modules (8200 Series) 15

O

On-Board Power Supply (8400 Series) 14

S

Spindles (8400 Series) 13

R

Relay & Door Sequencer 20
Relay Board (8400 Series) 14

W

Wireless Receiver 19
Wireless Transmitters 20



Description	Finish	2016 List	Stock No.	Case Qty.
29KS ASD Key switch - Alternate, SPDT	US32D	99.75	156261	12
29KS MSD Key switch - Momentary, SPDT	US32D	99.75	156367	12
29KS ADD Key switch - Alternate, DPDT	US32D	115.50	156366	12
29KS MDD Key switch - Momentary, DPDT	US32D	110.25	156367	12
Options: Red LED \$21.00 list price adder Green LED \$21.00 list price adder 2 LED's \$26.25 list price adder				
2901 For use with 4500 Series electric latch retraction battery back up option available		579.00	114909	
2902 For use with 4500 Series electric latch retraction in a day/night mode of operation, battery backup option available		639.00	114990	
2903 Provides 24 volt DC power for Fail Safe or Fail Secure locking devices and interface with building alarm controls, card readers, keypads, and other door controls.		499.00	114455	
2904 Provides 24 volt DC power and control for opening with an electrified locking device and automatic door operator		529.00	136899	
2908 Provides up to 1 amp of 12 or 24 volt DC power for all Hager Electrified Products except (ELR)		345.00	149931	1
2909 Provides up to 2 amps of 12 or 24 volt DC power for all Hager Electrified Products		526.00	177262	
2-679-0661 5 Amp hour battery backup for use with 2908 & 2909		46.20	153208	
2-679-0662 12 VDC output regulator module for use with 2908 & 2909		59.25	159033	
2-679-0664 Universal Relay Module for use with 2908 & 2909		113.80	156812	



Electrified Products

Description	Finish	2016 List	Stock No.	Case Qty.
2-679-0703 Electric Retraction Sequencer for use with 2908 & 2909		172.00	177267	
2-679-0704 Access Control Module for use with 2908 & 2909		188.00	177263	
2-679-0705 16 AMP Power Booster for use with 2909 only		172.00	177264	
2-679-0706 Power Supply Remote Monitoring Module for use with 2908 & 2909		250.00	177266	
2-679-0708 Underdesk Push Switch		108.35	176289	
2915 Heavy Duty Keypad - Indoor 500 users, 4-6 digit PIN codes 12/24V AC/DC	US3 US4 US10B US26 US32D	225.75 225.75 225.75 225.75 183.75	150749 150750 150751 150752 149619	12
2916 Heavy Duty Keypad - Outdoor 500 users, 4-6 digit PIN Codes 12/24V AC/DC	32D	240.00	173204	8
2916P Heavy Duty Keypad / Prox-Outdoor 500 users, 4-6 digit PIN codes 12/24V AC/DC	32D	659.95	171713	8
2-679-0669 Shroud Cover	-	154.30	176541	
2-679-0700 Surface Mount Box	-	31.00	172698	
2-679-0021 HID ProxCard II, 25 Cards	-	183.75	149627	
2-679-0022 HID ProxCard II, 100 Cards	-	735.00	153893	
2-679-0023 HID ProxKey, 10 Key fobs	-	147.00	150753	
2-679-0024 HID ProxKey, 100 Key fobs	-	1,470.00	153894	





Description	Finish	2016 List	Stock No.	Case Qty.
2925 Electric Strike - 5/8" Latch Field Reversible Failsafe/Failsecure 12/24VDC 4-7/8" Sq Corner Stainless Steel Faceplate	US32D	126.00	149637	8
2928 SC Electric Strike - 1/2" to 3/4" latch Failsafe/Failsecure 12/24V AC/DC 4-7/8" Sq Corner Stainless Steel Faceplate	US32D	204.75	149638	8
2928 RC Electric Strike - 1/2" to 3/4" latch Failsafe/Failsecure 12/24V AC/DC 4-7/8" Radius Corner Faceplate	ALM	178.50	150333	8
2928 6R Electric Strike - 1/2" to 3/4" latch Failsafe/Failsecure 12/24V AC/DC 6-7/8" Radius Corner Faceplate	ALM	183.75	154920	8
2928 7R Electric Strike - 1/2" to 3/4" latch Failsafe/Failsecure 12/24V AC/DC 7-15/16" Radius Corner Faceplate	ALM	189.00	173212	8
Options: Keeper open/closed status \$47.25 list price adder Note: Additional finishes available for 2928. Inquire with Hager Customer Service for pricing.				
2930 CYL Electric Strike - Cylindrical lock Dual Voltage 12/24VDC ANSI/BHMA A156.31 Grade 1 UL Listed 3-hour fire rated Non-handed	US4 US10 US10B US26 US26D US32D	530.25 530.25 530.25 530.25 530.25 483.00	175715 156216 160255 175075 149642 149641	12
2930 MOR Electric Strike - Mortise lock Dual Voltage 12/24VDC ANSI/BHMA A156.31 Grade 1 UL Listed 3-hour fire rated Non-handed	US4 US10 US10B US26 US26D US32D	551.25 551.25 551.25 551.25 551.25 509.25	175715 167282 160328 163253 149646 149645	12
2930 MDB Electric Strike - Mortise lock w/ Deadbolt Dual Voltage 12/24VDC ANSI/BHMA A156.31 Grade 1 UL Listed 3-hour fire rated Non-handed	US4 US10 US10B US26 US26D US32D	577.50 577.50 577.50 577.50 577.50 525.00	175715 175970 176007 149649 149648	12
Options: Latchbolt Monitor (LBM) \$68.25 list price adder Door secure monitor (DSM) \$141.75 list price adder Deadbolt monitor - (DBM) LH \$73.50 list price adder Deadbolt monitor - (DBM) RH \$73.50 list price adder				



Electrified Products



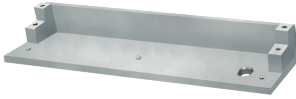
Description	Finish	2016 List	Stock No.	Case Qty.
2-679-0028 Buzzer 12/24V AC/DC operation for 2925/2928/2930	-	41.60	153474	12
2-679-0029 Rectifier for AC operation for 2925/2928/2930	-	23.10	155676	12
2941 Magnetic Lock 600 lb. holding force 12/24VDC, field selectable	ALM	236.25	149650	4
2942 Magnetic Lock 1200 lb. holding force 12/24VDC, field selectable	ALM	283.50	149652	4
2-679-0100 Top Jamb Kit for 2942	ALM	92.40	149653	8
2-679-0101 Top Jamb Kit for 2941	ALM	92.40	149654	8
2-679-0102 Glass Door Kit for 2942	ALM	46.20	149655	8
2-679-0103 Glass Door Kit for 2941	ALM	46.20	149656	8
2-679-0104 Adjustable Angle Bracket for 2942 10-1/2" x 1-3/4" x 3-1/8"	ALM	34.65	149657	8
2-679-0105 Adjustable Angle Bracket for 2941 9-7/8" x 1-1/4" x 2-1/4"	ALM	23.10	149658	8
2-679-0106 Angle bracket for 2942 (Cut for use with 2941) 10-1/2" x 1-1/2" x 3/4"	ALM	23.10	149659	8
2-679-0107 Filler bar for 2942 (Cut for use with 2941) 5/8" x 3/4" x 10-1/2"	ALM	17.35	149660	6
2-679-0108 Filler bar for 2942 (Cut for use with 2941) 3/4" x 3/4" x 10-1/2"	ALM	17.35	149661	6
2951 Magnetic Lock 1,650 lb. holding force Surface mount - single 12/24VDC	ALM DBZ	483.00 551.25	149701 153513	2 2



Description	Finish	2016 List	Stock No.	Case Qty.
2952 Magnetic Lock 1,650 lb. holding force Surface mount - double 12/24VDC	ALM	981.75	152042	2
	DBZ	1,113.00	153528	2
2953 Magnetic Lock 1,200 lb. holding force Surface mount - single 12/24VDC	ALM	456.75	149707	2
	DBZ	519.75	153533	2
2954 Magnetic Lock 1,200 lb. holding force Surface mount - double 12/24VDC	ALM	924.00	152043	2
	DBZ	1,060.50	153538	2
Options: Adjustable timer input (TIME) \$73.50 (2-679-0109) Door Position Sensor (DPS) \$46.20 (2-679-0110)* Magnetic Bond Sensor (MBS) \$69.30 (2-679-0111)* Note: Additional finishes available for 2951, 2952, 2953, 2954. Inquire with Hager Customer Service for pricing. * Must order two for use with the 2952 or 2954				
2-679-0120 Top jamb kit 2951/2953	ALM	112.35	149709	4
	DBZ	204.75		4
2-679-0121 Top jamb kit 2951/2953	ALM	225.75	153861	4
	DBZ	410.55		4
2-679-0130 Top jamb kit 2952/2954	ALM	207.90	168468	8
	DBZ	300.30		8
2-679-0131 Top jamb kit 2952/2954	ALM	73.50	149710	12
	DBZ	108.15		12
2-679-0160 Glass door kit 2951/2953 * Order 2 ea. for double door	ALM	147.00	161684	9
	DBZ	216.30	167699	9
2-679-0161 Glass door kit 2951/2953 * Order 2 ea. for double door	ALM	103.95	153684	12
	ALM	129.15	161686	9
2-679-0180 Universal Bracket for 2951/2953	ALM	69.30	167666	3
2-679-0181 Universal Bracket for 2951/2953	ALM			
2-679-0190 Universal Bracket for 2952/2954	ALM			
2-679-0191 Universal Bracket for 2952/2954	ALM			
2-679-0200 Spacer Bracket for 2951/2953	ALM			
2-679-0201 Spacer Bracket for 2952/2954	ALM			
2-679-0204 Armature mounting plate	-	69.30	167666	3

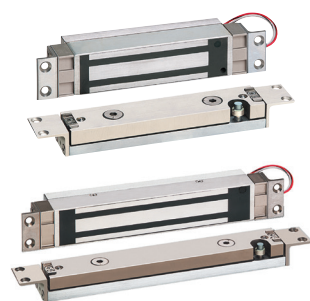


Electrified Products



Description	Finish	2016 List	Stock No.	Case Qty.
2-679-0205 Armature mounting plate w/ sensor	ALM	115.50		3
Note: Additional finishes available on many of the 2950 magnetic lock series accessories. Inquire with Hager Customer Service for pricing.				
2-679-0210 Coordinator mounting bracket for 2951/2953	ALM	138.60	160581	12
2-679-0220 Coordinator mounting bracket for 2952/2954	ALM	254.10	166426	6
2-679-0281 Filler bar - 1/8" x 1/-1/4" for 2951/2953	ALM	37.80	149711	12
2-679-0283 Filler bar - 1/8" x 1/-1/4" for 2951/2953	DBZ	72.45	149712	12
2-679-0291 Filler bar - 1/4" x 1/-1/4" for 2951/2953	ALM	38.85	149713	12
2-679-0293 Filler bar - 1/4" x 1/-1/4" for 2951/2953	DBZ	73.50	149715	12
2-679-0311 Filler bar - 1/2" x 1/-1/4" for 2951/2953	ALM	43.05	149716	12
2-679-0313 Filler bar - 1/2" x 1/-1/4" for 2951/2953	DBZ	77.70	149738	12
2-679-0321 Filler bar - 5/8" x 1/-1/4" for 2951/2953	ALM	46.20	149717	12
2-679-0323 Filler bar - 5/8" x 1/-1/4" for 2951/2953	DBZ	80.85	149739	12
2-679-0381 Filler bar - 1/8" x 1/-1/4" for 2952/2954	ALM	43.05	149718	12
2-679-0383 Filler bar - 1/8" x 1/-1/4" for 2952/2954	DBZ	77.70	149740	12
2-679-0391 Filler bar - 1/4" x 1/-1/4" for 2952/2954	ALM	46.20	149719	12
2-679-0393 Filler bar - 1/4" x 1/-1/4" for 2952/2954	DBZ	80.85	149741	12
2-679-0411 Filler bar - 1/2" x 1/-1/4" for 2952/2954	ALM	50.40	149720	12
2-679-0413 Filler bar - 1/2" x 1/-1/4" for 2952/2954	DBZ	85.05	149742	12
2-679-0421 Filler bar - 5/8" x 1/-1/4" for 2952/2954	ALM	52.50	149721	12
2-679-0423 Filler bar - 5/8" x 1/-1/4" for 2952/2954	DBZ	87.15	149743	12





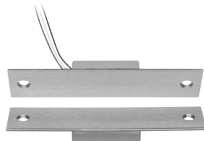
Description	Finish	2016 List	Stock No.	Case Qty.
2-679-0491 Angle Bracket - 1-1/2" x 1-1/2" for 2951/2953	ALM	50.40	149734	12
2-679-0493 Angle Bracket - 1-1/2" x 1-1/2" for 2951/2953	DBZ	85.05	149744	12
2-679-0501 Angle Bracket - 2" x 1-1/2" for 2951/2953	ALM	52.50	149735	12
2-679-0503 Angle Bracket - 2" x 1-1/2" for 2951/2953	DBZ	87.15	149745	12
2-679-0571 Angle Bracket - 1-1/2" x 1-1/2" for 2952/2954	ALM	67.20	149736	12
2-679-0573 Angle Bracket - 1-1/2" x 1-1/2" for 2952/2954	DBZ	101.85	149746	12
2-679-0581 Angle Bracket - 2" x 1-1/2" for 2952/2954	ALM	71.40	149737	12
2-679-0583 Angle Bracket - 2" x 1-1/2" for 2952/2954	DBZ	106.05	149747	12
Note: Additional finishes available on many of the 2950 magnetic lock series accessories. Inquire with Hager Customer Service for pricing				
2961 Magnetic Shear Lock 2,000 lb. holding force 1-5/8" depth, integrated electronics	US32D	829.50	151837	6
2965 Magnetic Shear Lock 2,700 lb. holding force 1-5/8" depth, integrated electronics ITC, FTC, HTC Same Price	US32D	897.75	151838	6
Options: ITC for standard mounting armature kit for aluminum and hollow metal doors with 7/8" to 1-1/8" deep top channels, wood doors, and factory prepared hollow metal flush edge doors. FTC for mounting for field prepared horizontal mounting in hollow metal doors with flush edge. HTC for mounting 1-15/16" deep Herculite channels. Herculite top rail armature adjustment bracket for leading edge adjustments (HTR) \$393.75 list price adder Magnetic bond sensor (MBS) \$127.05 list price adder Door Position sensor (DPS) \$57.75 list price adder				
2-679-0600 Wood Door reinforcement box for 2961	-	46.20	158750	6
2-679-0601 Wood Door reinforcement box for 2965	-	46.20		6
2958 Delayed Egress Magnetic Lock 1,650 lb. holding force Surface mount - single 12/24 VDC	ALM DBZ	1,270.50 1,338.75	149748 176098	6
2958 T Tandem Delayed Egress Magnetic Lock 1,650 lb. holding force Surface mount - double 12/24 VDC	ALM DBZ	2,136.75 2,210.25		6



Electrified Products

Description	Finish	2016 List	Stock No.	Case Qty.
<p>Operation (Must Specify): NA - IBC, IFC, NFPA101, NFPA1-UFC, UBC, SBC Compliant ND - IBC, IFC, California Building Code OSHPD, NFPA 101, NFPA1-UFC, UBC, SBC Compliant BD - BOCA National Building Code CH - City of Chicago Building Code</p> <p>Reset Control: Built in key switch - 1-30 second timed bypass, sustained bypass and alarm reset (std) (Not available with BOCA and Chicago operation) Built in reset push switch. Available with NFPA (NA) only Less key or push switch (No price reduction)</p> <p>Options: Door Position Status (DPS) \$42.00 list price adder Magnetic Bond Sensor (MBS) \$68.25 list price adder Anti-Tamper Switch (ATS) \$57.75 list price adder</p>				
<p>2972 Exit Switch MSD 2" Square button Momentary, SPDT 10 AMP contact</p>	US32D	73.50	149630	12
<p>2972T Exit Switch with Integrated Adjustable Timer 2" Square Button Adjustable 1-60 second timer Note: Not Code Compliant</p>	US32D	141.75	151710	6
Options: Red LED \$21.00 list price adder Green LED \$21.00 list price adder 2 LED's \$26.25 list price adder				
<p>2973 Code Compliant Exit Switch 2" Square Button Integrated fixed 30- second timer CSFM Listed, NFPA, IBC, IFC code compliance for Access Controlled Egress Doors LED illumination</p>	US32D	147.00	149631	6
Options: Red LED \$21.00 list price adder Green LED \$21.00 list price adder 2 LED's \$26.25 list price adder				
<p>2977 Exit Switch Piezoelectric Button Green & Red Illumination Adj. 1-35 sec. 12/24VDC Timer</p>	US32D	147.00	149634	12
<p>2978 Touchless Exit Switch Infrared sensor Illuminated status indication</p>	US32D	86.65	149636	12
<p>4801 Pressure Sense Bar Pressure sense technology; Tri-failsafe 12/24 VDC voltage sense input includes 10 ft. cable and connector; armored power transfer loop 36" Standard, Optional 42" & 48" available</p>	ALM BLK	381.15 381.15	156360 167722	6





Description	Finish	2016 List	Stock No.	Case Qty.
2-679-0611 PIR Egress Sensor	White	252.00	149632	12
2-679-0612 PIR Egress Sensor	Black	252.00	149633	12
2-679-0708 Under Desk Push Switch	White	108.35	176289	1
2-679-0620 Concealed Mortise Power Transfer Loop	-	69.30	149750	12
2-679-0621 Heavy Duty Power Transfer 2-Wire	ALM	414.75	152079	6
2-679-0622 Heavy Duty Power Transfer 2-Wire	DBZ	414.75	160604	6
2-679-0623 Heavy Duty Power Transfer 10-Wire	ALM	414.75	149751	6
2-679-0624 Heavy Duty Power Transfer 10-Wire	DBZ	414.75	154018	6
2-679-0625 Concealed Magnetic Contact	ALM	114.70	152890	12
2-679-0626 Magentic Switch	-	36.76	182672	1
2-679-0640 Single gang back box	-	13.90	149752	1
2-679-0641 3-gang interior mount box	-	103.95	166911	1
2-679-0642 Shroud for surface mount box outdoor use	-	66.00	166912	1
2-679-0650 Emergency Door Release Blue break glass station	-	212.10	149754	6



8400 Series - Low Energy Power Operator



Description	Mount	Finish	2016 List	Stock No.	Box Qty.
8418 Single Operator	Push	ALM	4,293.00	162136	1
1 unit, 1 controller, single cover, handed		DBZ	4,293.00	162141	
Standard Sizes - 36"	Pull	ALM	4,322.00	162138	
42", 44" and 48" - add \$85.40 to list price		DBZ	4,322.00	162143	
Specify Push or Pull side of door					
8419 Simultaneous Pair	Push	ALM	7,705.00	162145	1
2 units, 1 controller, double cover, non-handed		DBZ	7,705.00	162147	
Standard Sizes - 60" and 72"	Pull	ALM	7,800.00	162146	
84", 88", 92" and 96" - add \$85.40 to list price		DBZ	7,800.00	162148	
Specify Push or Pull side of door					
8420 Independent Pair	Push	ALM	8,421.00	162149	1
2 units, 2 controllers, double cover, non-handed		DBZ	8,421.00	162151	
Standard Sizes - 60" and 72"	Pull	ALM	8,519.00	162150	
84", 88", 92" and 96" - add \$85.40 to list price		DBZ	8,519.00	162152	
Specify Push or Pull side of door					
8421 Double Egress Simultaneous Pair	Push/Pull	ALM	8,184.75	162153	1
2 units, 1 controller, double cover, non-handed		DBZ	8,184.75	162154	
Standard Sizes - 60" and 72"					
84", 88", 92" and 96" - add \$85.40 to list price					
8422 Double Egress Independent Pair	Push/Pull	ALM	8,944.95	162155	1
2 units, 2 controllers, double cover, non-handed		DBZ	8,944.95	162156	
Standard Sizes - 60" and 72"					
84", 88", 92" and 96" - add \$85.40 to list price					
8423 Single Operator with Mechanical Closer	Push	ALM	5,800.00		1
1 unit, 1 controller, 1-5100 Series Door Closer,		DBZ			
double cover, handed	Pull	ALM	5,800.00		
Standard Sizes - 60" and 72"		DBZ			
84", 88", 92" and 96" - add \$85.40 to list price					
Specify Push or Pull side of door					

*Note: Non-standard door widths in quantities under 50 units: add \$207.40 per unit.

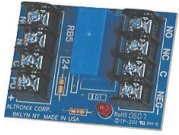
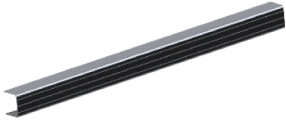




Description	Finish	Year List	Stock No.	Case Qty.	Box Qty.
2-659-0151 Pull Side Track Arm with 20mm Spindle	ALM	415.00	162512	-	1
2-659-0152 Pull Side Track Arm with 20mm Spindle	DBZ	505.00	162513	-	
2-659-0153 Push Side Standard Arm with 35mm Spindle	ALM	415.00	162515	-	1
2-659-0154 Push Side Standard Arm with 35mm Spindle	DBZ	505.00	162516	-	
2-659-0220 Push Side Standard Arm with 50mm Spindle For use with double egress assemblies	ALM	415.00	162561	-	1
2-659-0221 Push Side Standard Arm with 50mm Spindle For use with double egress assemblies	DBZ	505.00	162562	-	
2-659-0222 Double Egress Arm Assembly Track arm with 20mm Spindle	ALM	750.00	162563	-	1
2-659-0223 Double Egress Arm Assembly Track arm with 20mm Spindle	DBZ	850.00	162564	-	
2-659-0224 20mm Replacement Spindle For use with double egress and track arm assembly	ALM	143.50	162565	-	1
2-659-0225 20mm Replacement Spindle For use with double egress and track arm assembly	DBZ	175.00	162566	-	
2-659-0226 35mm Replacement Spindle For use with standard single and standard pair applications	ALM	143.50	162567	-	1
2-659-0227 35mm Replacement Spindle For use with standard single and standard pair applications	DBZ	175.00	162568	-	
2-659-0228 50mm Replacement Spindle	ALM	143.50	162570	-	1
2-659-0229 50mm Replacement Spindle For use with push side standard arm - double egress only	DBZ	175.00	162573	-	
2-659-0230 Narrow Top Rail Drop Plate	ALM	127.00	162693	-	1
2-659-0231 Narrow Top Rail Drop Plate	DBZ	127.00	162694	-	
2-659-0232 Cover for Single Operator - 36"	ALM	240.00	162574	-	1
2-659-0233 Cover for Single Operator - 36"	DBZ	240.00	162661	-	



8400 Series - Low Energy Power Operator



Description	Finish	2016 List	Stock No.	Case Qty.	Box Qty.
2-659-0234 Cover for Dual Operators - 72"	ALM	420.00	162663	-	1
2-659-0235 Cover for Dual Operators - 72"	DBZ	420.00	162692	-	-
Note: Additional sizes available. Inquire with Hager customer service for pricing.					
2-659-0236 Power Supply On-Board 115 VAC 60Hz 24 VDC 500mA		785.00	162696	-	1
2-659-0237 Relay Board 24VDC 40mA 5 amp/ 220 VAC or 28VDC DPDT contacts		30.50	162697	-	1



8200 Series - Low Energy Power Operator



Description	Size	Finish	2016 List	Stock No.	Box Qty.
8218 Single Operator	31.5"	ALM	2,500.00	184311	1
1 unit, standard arm, single 31.5" cover, non-handed		DBZ	2,553.60	184312	1
Standard Size Header - 31.5", Full Width Header - 51.5", custom sizes available from 31.5" to 51.5" - add \$225 to list	51.5"	ALM	2,800.00	184313	1
Standard Arm included (push side mount, 0 - 4.1875" reveal)		DBZ	2,864.30	184314	1
Deep Reveal Arm (4.125" - 9.875") - add \$225 to list price					
8219 Simultaneous Pair Operator		ALM	5,782.10	184317	1
1 unit, standard arm, single 75.5" cover, non-handed		DBZ	5,889.30	184318	1
Standard Size Header - 75.5", custom sizes available from 75.5" to 101.5" - add \$225 to list					
Standard Arm included (push side mount, 0 - 4.1875" reveal)					
Deep Reveal Arm (4.125" - 9.875") - add \$225 to list price					
Includes Multiple Door Module (2-659-0276)					
8221 Double Egress Simultaneous Pair Operator		ALM	5,782.10	185390	1
1 unit, standard arm, single 75.5" cover, non-handed		DBZ	5,889.30	185391	1
Standard Size Header - 75.5", custom sizes available from 75.5" to 101.5" - add \$225 to list					
Standard Arm included (push side mount, 0 - 4.1875" reveal)					
Deep Reveal Arm (4.125" - 9.875") - add \$225 to list price					
Includes Multiple Door Module (2-659-0276)					

Description	Finish	2016 List	Stock No.	Case Qty.	Box Qty.
2-659-0275		178.60	184232	-	1
Exterior Door Module (EDM) for 8200 Auto Operator					
Provides On-Board Output for 24VDC Electric Strike or Magnetic Lock as with (0.2 – 4.0s) delay, allows for day/night mode operation, and provides programming interface when used with promgrammer (2-659-0280)					
2-659-0276		250.00	184247	-	1
Multiple Door Module (MDM-B) for 8200 Auto Operator					
Allows for operation of double leaved doors					
2-659-0277		178.60	184269	-	1
Programming Interface Module (PIM) for 8200 Auto Operator					
2-659-0280		446.50	184279	-	1
iMotion Programmer w/ 6' Cord					
2-659-0278		778.60	184272	-	1
Battery Backup with Interface Cable for 8200 Auto Operator					
Single Openings: 33" mininum header					
Paired Openings: 36" mininum header					
2-659-0279		60.70	184278	-	1
Battery Backup Extension Harness for 8200 Auto Operator					

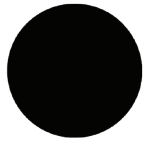


8200 Series - Low Energy Power Operator

Description	Finish	2016 List	Stock No.	Case Qty.	Box Qty.
2-659-0283 2.65" Drive Shaft Arm (double egress/deep reveal)		135.70	184282	-	1
2-659-0284 3.22" Drive Shaft Arm (standard in & out)		89.30	184283	-	1
2-659-0285 3.94" Drive Shaft Arm (special applications)		135.70	184286	-	1
2-659-0286 4.84" Drive Shaft Arm (double egress out)		242.85	184287	-	1
2-659-0287 Push Side Arm (0 - 4.1875" reveal) CLR (standard arm)		342.45	184289	-	1
2-659-0288 Push Side Arm (0 - 4.1875" reveal) BLK (standard arm)		342.45	184290	-	1
2-659-0289 Push Side Arm (4.125 - 9.875" reveal) CLR		342.45	184292	-	1
2-659-0290 Push Side Arm (4.125 - 9.875" reveal) BLK		342.45	184297	-	1
2-659-0291 Double Egress Outswing Door Arm Assembly (0 - 4.1875" reveal) CLR (standard arm)		342.45	184298	-	1
2-659-0292 Double Egress Outswing Door Arm Assembly (0 - 4.1875" reveal) BLK (standard arm)		342.45	184300	-	1
2-659-0293 Double Egress Outswing Door Arm Assembly (4.125 - 9.875" reveal) CLR		342.45	184301	-	1
2-659-0294 Double Egress Outswing Door Arm Assembly (4.125 - 9.875" reveal) BLK		342.45	184302	-	1
2-659-0295 Pull Side Arm and Slide Track (0" reveal) CLR		342.45	184303	-	1
2-659-0296 Pull Side Arm and Slide Track (0" reveal) BLK		342.45	184304	-	1
2-659-0297 RH Pull Side Deep Reveal Arm and Track (0 - 6" reveal) CLR		570.80	184306	-	1
2-659-0298 RH Pull Side Deep Reveal Arm and Track (0 - 6" reveal) BLK		570.80	184307	-	1
2-659-0299 LH Pull Side Deep Reveal Arm and Track (0 - 6" reveal) CLR		570.80	184308	-	1
2-659-0300 LH Pull Side Deep Reveal Arm and Track (0 - 6" reveal) BLK		570.80	184309	-	1
2-659-0301 Communication Harness for Pairs		146.45	184310	-	1



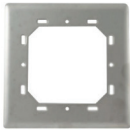
Electrified Products - Low Energy Power Operator Controls



Description	Finish	2016 List	Stock No.	Case Qty.	Box Qty.
2-659-0303 6" Round with Text & Logo	US32D/Blue	200.00	185055	12	1
2-659-0304 6" Round with Logo Only	US32D/Blue	200.00	185058	12	1
2-659-0305 4-3/4" Square with Text & Logo	US32D/Blue	200.00	185056	12	1
2-659-0306 4-3/4" Square with Logo Only	US32D/Blue	200.00	185059	12	1
2-659-0161 6" Round Actuator Push To Open and Handicap Symbol	US32D/Blue	120.00	162698	20	1
2-659-0162 6" Round Actuator Handicap Symbol	US32D/Blue	120.00	162699	20	1
2-659-0163 Surface Mount Box For 6" Round Actuator	Black	40.00	162700	20	1
2-659-0164 Weather Ring For 6" Round Actuator	Black	8.00	162701	10	1
2-659-0165 4.5" Round Actuator Push To Open and Handicap Symbol	US32D/Blue	104.00	162703	20	1
2-659-0166 4.5" Round Actuator Handicap Symbol	US32D/Blue	104.00	162704	20	1



Electrified Products - Low Energy Power Operator Controls



Description	Finish	2016 List	Stock No.	Case Qty.	Box Qty.
2-659-0167 Surface Mount Box For 4.5" Round Actuator	Black	32.00	162705	20	1
2-659-0168 Weather Ring For 4.5" Round Actuator	Black	8.00	162706	10	1
2-659-0241 Universal Back Plate For use when mounting 4.5" round or 4.5" square actuator to bollard post	US32D	26.00	162743	10	1
2-659-0169 6" Square Actuator Push To Open and Handicap Symbol	US32D/Blue	120.00	162707	20	1
2-659-0170 6" Square Actuator Handicap Symbol	US32D/Blue	120.00	162708	20	1
2-659-0171 Surface Mount Box For 6" Square Actuator	Black	32.00	162709	20	1
2-659-0172 4.5" Square Actuator Push To Open and Handicap Symbol	US32D/Blue	98.00	162710	20	1
2-659-0173 4.5" Square Actuator Handicap Symbol	US32D/Blue	98.00	162711	20	1
2-659-0174 Surface Mount Box For 4.5" Square Actuator	Black	32.00	162712	45	1
2-659-0175 1.5" x 4.75" Jamb Actuator Push To Open and Handicap Symbol	US32D/Blue	95.00	162713	20	1



Electrified Products - Low Energy Power Operator Controls



Description	Finish	2016 List	Stock No.	Case Qty.	Box Qty.
2-659-0176 1.5" x 4.75" Jamb Actuator Handicap Symbol	US32D/Blue	95.00	162714	20	1



2-659-0177 Surface Mount Box For 1.5" x 4.75" Jamb Actuator	Black	20.00	162715	20	1
--	-------	-------	--------	----	---



2-659-0178 36" Low Profile Actuator Push To Open and Handicap Symbol	US32D/Blue	700.00	162716	2	1
---	------------	--------	--------	---	---

Wireless
Includes 433 MHz wireless transmitter
Exceeds California Building Code, Section 1117B.6



2-659-0179 36" Low Profile Actuator Push To Open and Handicap Symbol	US32D/Blue	645.00	162717	2	1
---	------------	--------	--------	---	---

Hard Wired
Exceeds California Building Code, Section 1117B.6



2-659-0242 4.75" Vestibule Actuator Push To Open and Handicap Symbol	US32D/Blue	240.00	162741	20	1
---	------------	--------	--------	----	---



2-659-0243 Surface Mount Box For 4.75" Vestibule Actuator	Black	75.00	162742	42	1
--	-------	-------	--------	----	---

2-659-0180 Bollard Post For use with 4.5" round and 4.5" square push plates	Black	500.00	162720	1	1
--	-------	--------	--------	---	---



2-659-0181 Bollard Post For use with 4.5" round and 4.5" square push plates	Bronze	500.00	162724	1	1
--	--------	--------	--------	---	---

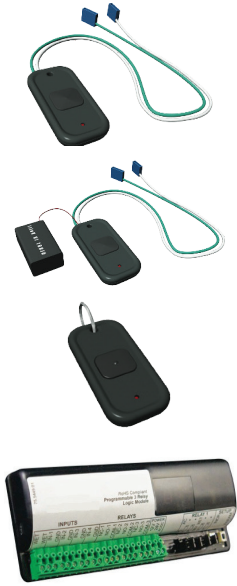
2-659-0182 Bollard Post For use with 4.5" round and 4.5" square push plates	Silver	500.00	162725	1	1
--	--------	--------	--------	---	---



2-659-0183 433 MHz Receiver Digital, Radio Controlled	-	115.00	162726	20	1
--	---	--------	--------	----	---



Electrified Products - Low Energy Power Operator Controls



Description	Finish	2016 List	Stock No.	Case Qty.	Box Qty.
2-659-0184 3-Volt Transmitter Wireless Hardwired to actuator	Black	110.00	162727	20	1
2-659-0185 9-Volt Transmitter Wireless	Black	110.00	162728	20	1
2-659-0186 Wireless Transmitter One Button	Black	110.00	162729	20	1
2-659-0240 Programmable Relay and Door Sequencer For door timing and advanced relay sequencing	-	160.00	162730	20	1

Note: Actuators come standard hard-wired. Must order receiver and transmitter separately for wireless applications.

