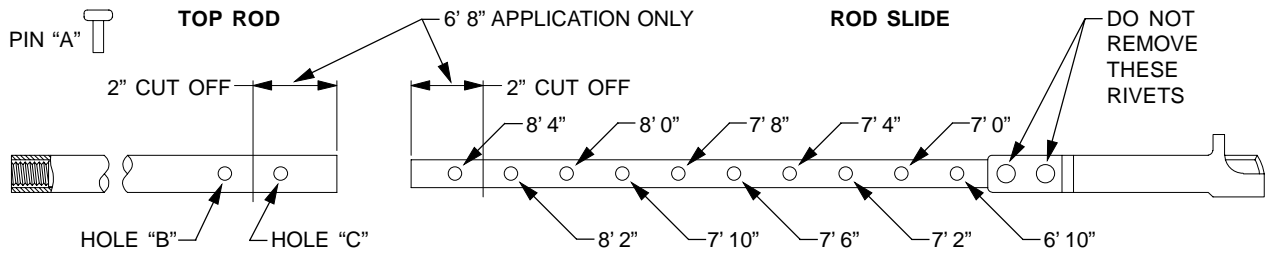
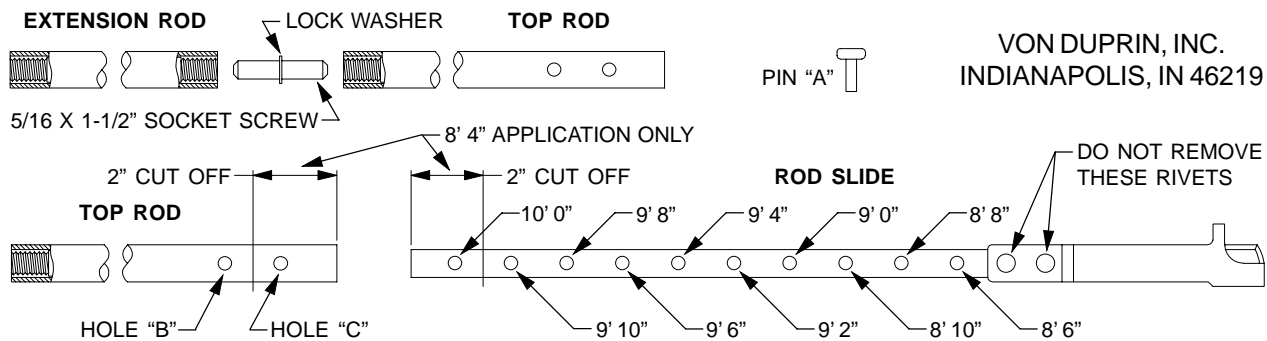


**33/3547A/48A TOP ROD ASSEMBLY INSTRUCTIONS
FOR 6' 8" THRU 8' 4" DOOR HEIGHT**



DOOR SIZE	ASSEMBLY INSTRUCTIONS
6' 8" TO LESS THAN 6' 10"	<ol style="list-style-type: none"> CUT 2" OFF END OF BOTH TOP ROD AND ROD SLIDE AS SHOWN. ASSEMBLE WITH PIN "A" THRU HOLE "B" IN TOP ROD AND 6' 10" HOLE IN ROD SLIDE.
6' 10" THRU 8' 4"	<ol style="list-style-type: none"> NO CUTTING REQUIRED. SELECT HOLE CORRESPONDING TO HEIGHT OF DOOR BEING INSTALLED. ASSEMBLE WITH PIN "A" THRU HOLE "C" IN TOP ROD AND CORRESPONDING HOLE IN ROD SLIDE. <p>NOTE: HOLE "B" IN TOP ROD IS NOT USED HERE.</p>

TOP ROD ASSEMBLY INSTRUCTIONS FOR 8' 4" THRU 10' 0" DOOR HEIGHT



DOOR SIZE	ASSEMBLY INSTRUCTIONS
8' 4" TO LESS THAN 8' 6"	<ol style="list-style-type: none"> CUT 2" OFF END OF BOTH TOP ROD AND ROD SLIDE AS SHOWN. ASSEMBLE WITH PIN "A" THRU HOLE "B" IN TOP ROD AND 8' 6" HOLE IN ROD SLIDE, THEN ASSEMBLE EXTENSION ROD AS SHOWN.
8' 6" THRU 10' 0"	<ol style="list-style-type: none"> NO CUTTING REQUIRED. SELECT HOLE CORRESPONDING TO HEIGHT OF DOOR BEING INSTALLED. ASSEMBLE WITH PIN "A" THRU HOLE "C" IN TOP ROD AND CORRESPONDING HOLE IN ROD SLIDE, THEN ASSEMBLE EXTENSION ROD AS SHOWN.

PART NO. 972443_A

INSTRUCTIONS FOR PRINTER:

1. Black print on white tag stock 0.010" +/- 0.005" thick.
2. Print both sides.
3. 4" high x 7" wide trim size.

PART NO. 972443_A