

290 Micro Cabinet Lock



The 290 Micro Cabinet Lock is designed to electronically secure cabinets and drawers. The need for keys is eliminated and the addition of a keypad or remote control of your choice provides true access control and convenience of use.

FEATURES

- For Swinging or Sliding Doors
- Failsecure Continuous Duty
- Field Reversible Solenoid for Failsafe Operation
- Dual 12/24VDC
- Nonhanded
- 600lbs of Holding Force

APPLICATION

- Pharmaceutical Cabinets and Drawers
- Retail Display Cases and Drawers
- Gun Cabinets
- File Cabinets
- Utility Cabinets and Drawers
- Museum Display Cases

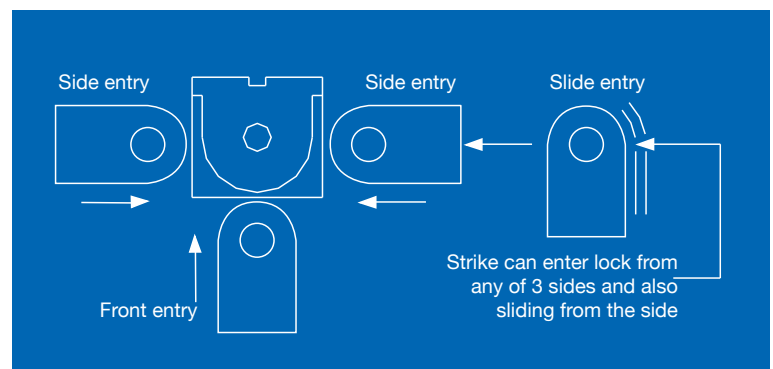
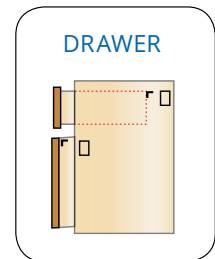
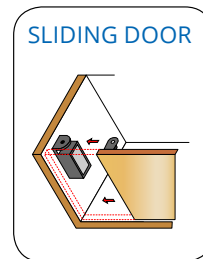
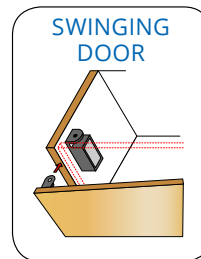
SPECIFICATIONS

Dual Voltage 250/130mA @ 12/24VDC

Dimensions 3-1/4"L x 1-1/8"W x 1-1/8"D"

MODELS

- 290** Micro Cabinet Lock
- 290LS** Micro Cabinet Lock with Lock Status Switch



DISTRIBUTED BY



© 2017 SECURITY DOOR CONTROLS ■ WWW.SDCSECURITY.COM

LIT-290 MICRO 01/17

[t] 800.413.8783 ■ 805.494.0622 ■ [f] 866.215.3138 ■ 801 Avenida Acaso, Camarillo, CA 93012 ■ PO Box 3670, Camarillo, CA 93011