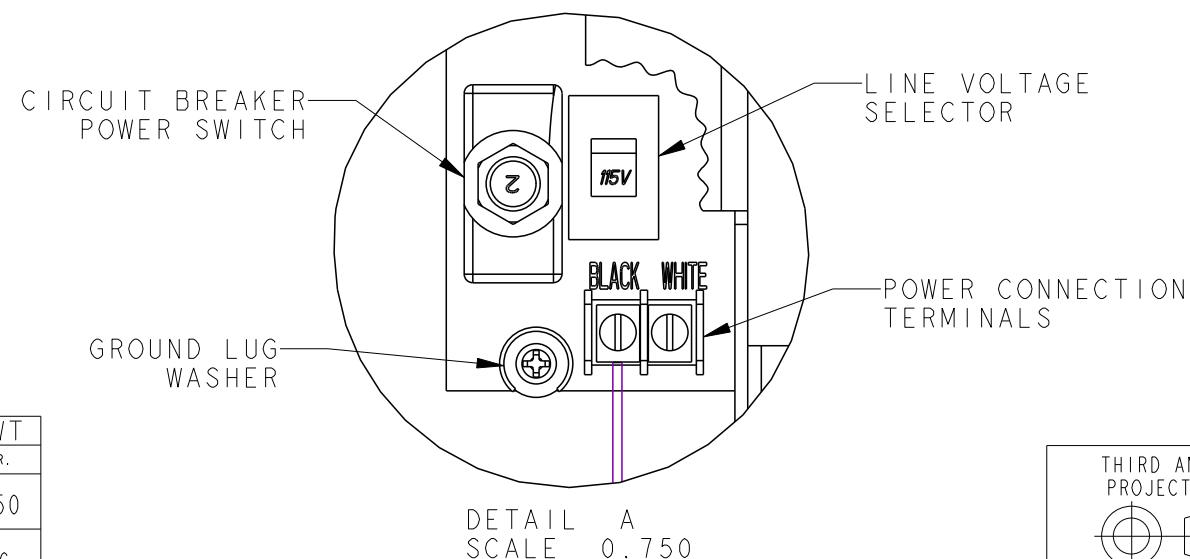


INSTALLATION INSTRUCTIONS FOR THE ELR-150 POWER SUPPLY:

- BEFORE INSTALLATION -
 - DISCONNECT POWER AND USE ONLY WITH PRECISION HARDWARE DEVICES
- MOUNT THE ENCLOSURE -
 - MOUNT ENCLOSURE SECURELY TO THE WALL USING THE DIMENSIONS PROVIDED.
 - RUN 2 BLACK AND 2 WHITE WIRES, OF THE PROPER GAGE (SEE MAXIMUM WIRE RUN CHART BELOW), FROM EACH DOOR TO THE POWER SUPPLY (ENTERING THROUGH THE ELECTRICAL KNOCKOUTS).
- SELECT THE LINE VOLTAGE -
 - THE INPUT VOLTAGE SHOULD BE EITHER 115 VAC, 1.2 AMPS, 50/60 HZ OR 230 VAC, 0.7 AMPS, 50/60 HZ.
 - SELECT 115 VAC OR 230 VAC ON THE LINE VOLTAGE SELECTOR (SEE DETAIL VIEW "A") PER THE INPUT VOLTAGE.
- CONNECT THE GROUND -
 - CONNECT THE GROUND WIRE BY CLAMPING IT UNDERNEATH THE GROUND LUG WASHER (SEE DETAIL VIEW "A").
- CONNECT THE POWER -
 - CONNECT THE RESISTOR PACK TO THE POWER CONNECTOR TERMINAL LABELED BLACK (SEE DETAIL VIEW "A").
 - CONNECT THE HOT (BLACK WIRE) TO THE RESISTOR PACK WIRE WITH A WIRE NUT.
 - CONNECT THE NEUTRAL (WHITE WIRE) TO THE POWER CONNECTOR TERMINAL LABELED WHITE (SEE DETAIL VIEW "A").
 - MOUNT THE COVER PLATE WITH TWO #8-16 X 3/8" PPHSMS PROVIDED AND THE CIRCUIT BREAKER MOUNTING NUT.
- AFTER INSTALLATION -
 - TO WIRE THE EXIT DEVICES, REFER TO THE CONTROL MODULE INSTALLATION INSTRUCTIONS: # 02131-II
 - TO WIRE THE BATTERY BACK-UP MODULE, REFER TO THE BATTERY BACK-UP INSTALLATION INSTRUCTIONS: # 02202-II

SYSTEM REQUIREMENTS FOR THE ELR-150 POWER SUPPLY:

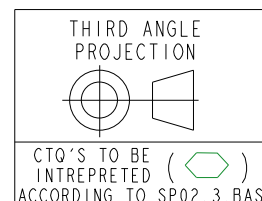
- MINIMUM SYSTEM REQUIRES: ONE ELR-150 POWER SUPPLY AND ONE CM-150-08 CONTROL MODULE.
- MAXIMUM SYSTEM USES: ONE ELR-150 POWER SUPPLY AND FOUR CM-150-08 CONTROL MODULES AND ONE BT-150-07 BATTERY BACK-UP MODULE.



MAXIMUM WIRE RUN		
WIRE GAGE	WITH 22 GAGE POWER TRANSFER	WITH 28 GAGE POWER TRANSFER
16	75 ft.	55 ft.
14	125 ft.	75 ft.
12	200 ft.	-----



E	100669	BWA	3/04/09	BWT
REV.	E.C.N.	BY	DATE	APR.
ALL DIMENSIONS ARE IN INCHES UNLESS OTHERWISE SPECIFIED				SCALE 0.250
DRAWN BY JLM	DATE 2/14/06	ENGINEER JLM	DATE 2/14/06	
MODELED BY JLM	DATE 2/14/06	APP. BY JLM	DATE 2/14/06	



SPECIFICATIONS ARE TO BE INTERPRETED ACCORDING TO ASME Y14.5-1994.

STANLEY SECURITY SOLUTIONS, INC.

INDIANAPOLIS, INDIANA

ELR-150, POWER SUPPLY
INSTALLATION INSTRUCTIONS

PRIMARY PRODUCT FAMILY PHI
THIS DRAWING IS CONFIDENTIAL

PROJECT ELR150

SHEET 1 OF 1

DRAWING 02132-11