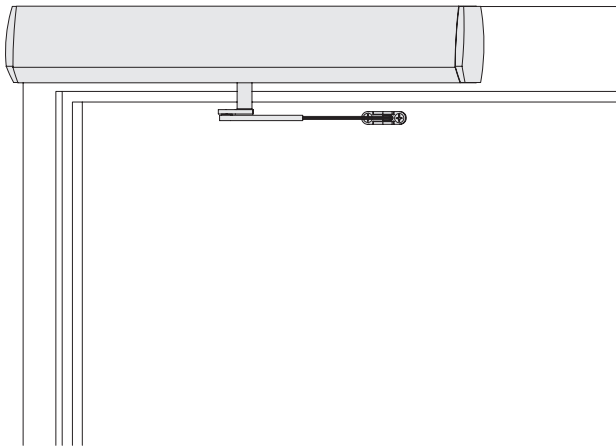


9140 SERIES

FEATURES

SINGLE DOOR, SURFACE MOUNT (PUSH) OFFSET PIVOT/BUTT HINGE




















The 9140 BENCHMARK by LCN is an electrically powered low-energy operator. It provides easy access for people with disabilities, or the elderly. Designed primarily for automatic opening applications that occasionally require manual opening. The BENCHMARK is a cost-effective solution for retrofitting an activated or manual door.

- Push 'N Go permits non-switch activation.
- Microprocessor control box ensures reliability and maintains customer settings.
- Power Boost allows for increased closing force near latch.

- 9140 Series operator is shipped with motor gearbox, control box, mounting plate, regular arm, metal cover, standard track, wood and machine screw pack. Actuators available separately, see pages 122-137.
- Single interior door, surface mounted.
- ADA compliant.
- On/Off switch included as standard.
- Non-handed for either right or left swinging door.
- 27" cover is standard. 36" optional.
- All potentiometers clearly labeled with their functions.
- LED lights indicate power to control box and motor gearbox.

9140 Series is fully compliant with UL 325 and meets the provisions of ANSI A156.19. The 9140 Series is UL listed for fire-rated applications. The 9140 Series also meets the provisions of the Americans with Disabilities Act.

MOUNTING						HANDING		FINISH	COVER		ARM FUNCTION					
	SURFACE MOUNT SINGLE DOOR											STANDARD (SINGLE LEVER)				
	SURFACE MOUNT SIMULTANEOUS PAIR											REGULAR (DOUBLE LEVER)				
	SURFACE MOUNT INDEPENDENT PAIR											DOUBLE EGRESS (PUSH/PULL)				
	CONCEALED SINGLE DOOR											OFFSET PIVOT BUTT HINGE ARM				
	CONCEALED SIMULTANEOUS PAIR											CENTER PIVOT ARM				
	CONCEALED INDEPENDENT PAIR															
HANDED						NON-HANDED										
																

● AVAILABLE
○ NOT AVAILABLE

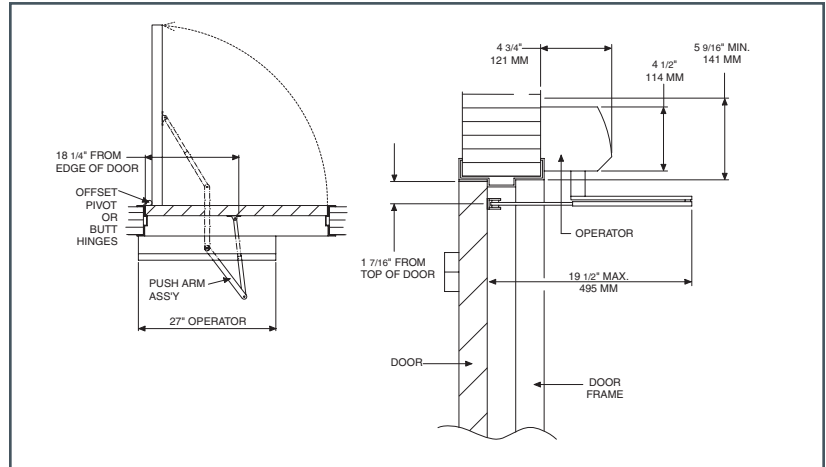
LCN

DISTRIBUTED BY
AHS ACCESS HARDWARE SUPPLY
accesshardware.com

PHONE 877-671-7011
FAX 800-248-1460
www.allegion.com/us
2/14

9140 SERIES

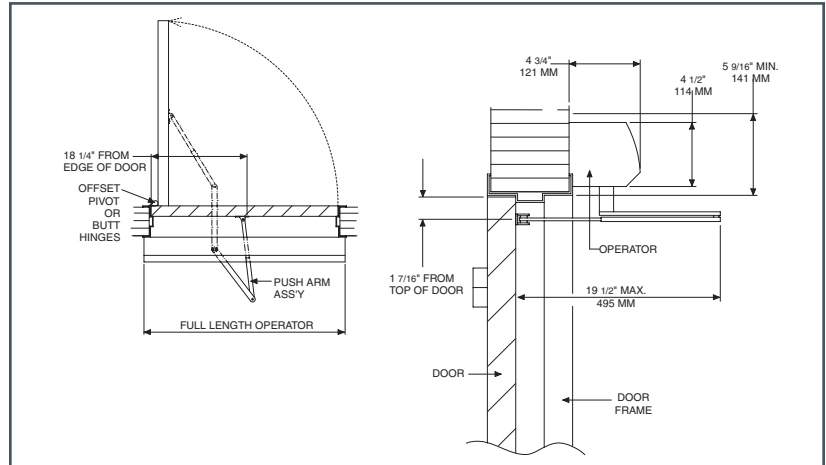
TOP JAMB SINGLE DOOR (OFFSET/BUTT HINGE, CENTER PIVOT, PUSH, STANDARD COVER) MOUNTING



TOP JAMB SINGLE DOOR (OFFSET/BUTT HINGE, CENTER PIVOT, PUSH, FULL COVER) MOUNTING

MAXIMUM OPENING

Template allows 90 degree power opening and 90 degree manual opening.



- **Butt Hinges** should not exceed 5" (127 mm) in width.
- **Reveal** for push installations should not exceed 6" (152 mm) for REGULAR ARM and 9-3/4" (248 mm) for LONG ARM.
- **Head Frame** minimum 2" (51 mm).
- **Top Rail** minimum 2" (51 mm). Flush ceiling installation requires 5-1/4" (133 mm) minimum.
- **Opening and Closing Time** are variable by adjustments to the electronic control module located on the operator assembly. Maximum hold open time adjustable up to approximately 30 seconds.
- **System Diagram** see "AUTOMATIC OPERATORS" section pages 53 for typical system wiring and page 56 for electrical data.

Contact LCN Product Support
for installation assistance.

9140 SERIES

ACCESSORIES

MOTOR GEARBOX

MOTOR GEARBOX ASSEMBLY, 9140-3454S

Driving mechanism for operator. (Switch included.) For 27" unit.

MOTOR GEARBOX ASSEMBLY (W/O SWITCH), 9140-3454

Driving mechanism for operator. (Switch not included.) For full length unit (36").

BRACKETS

MOUNTING BRACKET, 9140-3018

Standard mounting bracket.

SWITCH BRACKET – 29" CABLE, 9140-3351-1

Bracket used to locate switch at end of cover on full length unit.

SWITCH BRACKET – 41" CABLE, 9140-3351-2

Bracket used to locate switch at end of cover on full length unit.

CONTROL BOXES

CONTROL BOX, (120v), 9130-3462

Electronic controlling device with power supply output and power boost feature for Benchmark.

COVERS

METAL COVER, 9140-72MC

Standard, 27", non-handed, extruded aluminum cover.

FULL METAL COVER, 9140-72FC

36" Full length, non-handed, extruded aluminum cover.

COVER INSERT 9140-163

Used to cover operator shaft opening. (Includes 2 pieces).

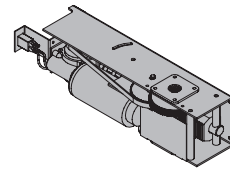
COVER END CAP INSERT, 9140-163-1

Used to cover switch hole opening.

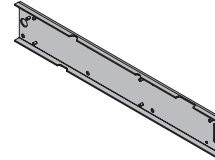
COVER END CAP, 9140-334

Black plastic end caps. (Includes 9130-163-1 cover and cap insert).

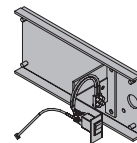
3454
3454S



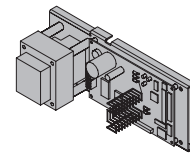
3018



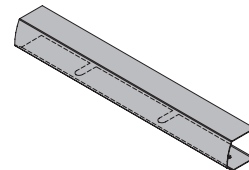
3351-1
3351-2



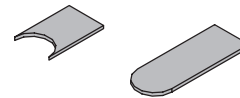
3462



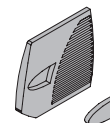
72MC
72FC



163



334



163-1

NOTE (*334 includes 163-1)

9140 SERIES

ARMS

REGULAR ARM, 9140-3077

Non-handed arm.

LONG PUSH ARM, 9140-3077L

Non-handed long arm.

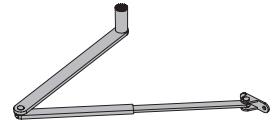
ROD & SHOE, 9140-79

Rod for use with regular arm.

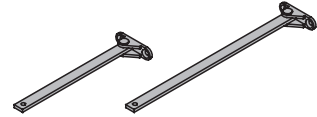
LONG ROD & SHOE, 9140-79LR

Long rod used with long arm, for deep reveals.

3077
3077L



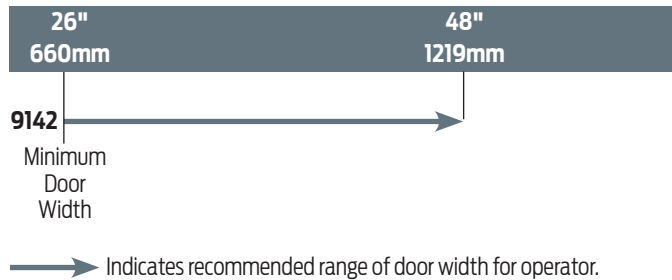
79LR
79



9140 SERIES

TABLE OF SIZES

DOOR WIDTH



NOTE: For All Benchmark Series.

30" minimum door width for 27" pull operator.

36" door width only for full length pull operator.

HOW-TO-ORDER 9140 SERIES OPERATORS

1. SPECIFY FINISH

- ☐ Standard Anodized Finish _____
Aluminum or Dark Bronze.

Operator will be shipped with:

- STANDARD MOTOR GEARBOX,
 - STANDARD CONTROL BOX,
 - MOUNTING BRACKET,
 - 27" METAL COVER,
 - STANDARD ARM (3077),
 - STANDARD TRACK w/TRACK ROLLER,
 - WOOD and MACHINE SCREW PACK
- Unless options listed below are selected.

OPERATOR OPTIONS

COVER

- ☐ 36" Full Cover

ARM

- ☐ Long Arm (3077L)
(reveals 6" to 9-3/4")

ORDERING INFORMATION

[illegible]