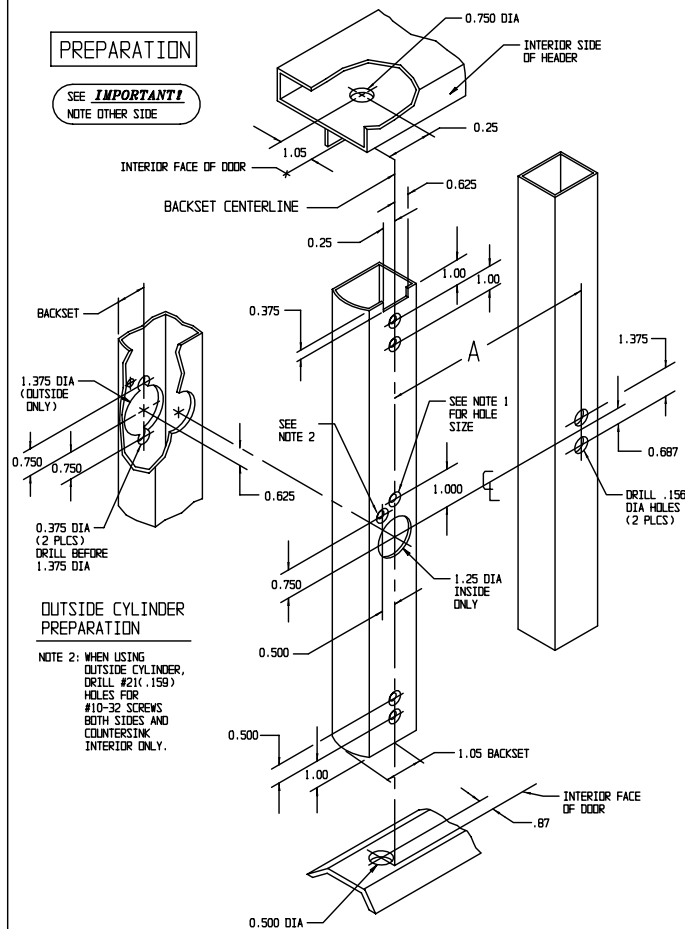


PREPARATION

SEE **IMPORTANT!**
NOTE OTHER SIDE



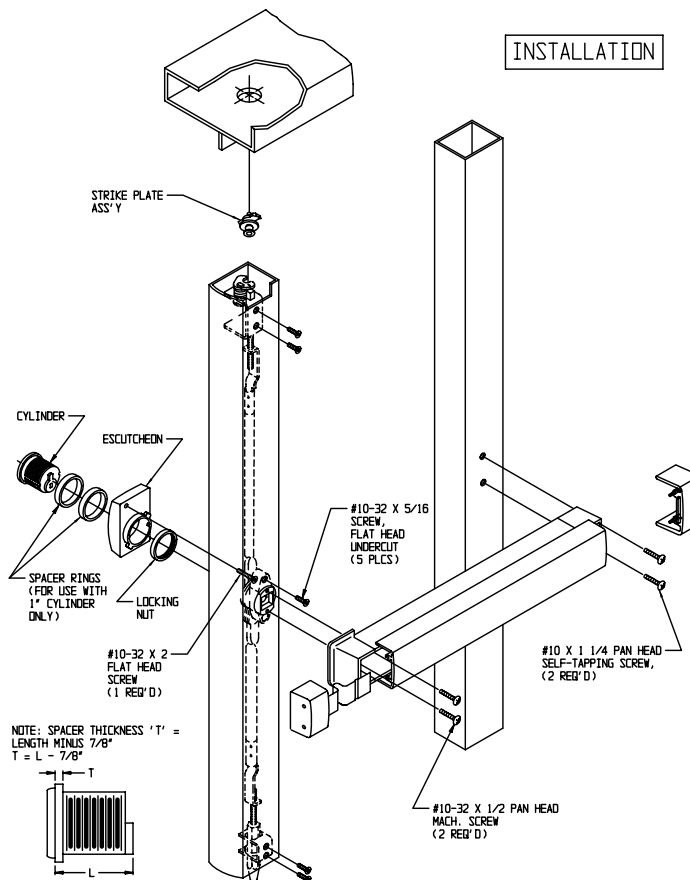
OUTSIDE CYLINDER PREPARATION

NOTE 2: WHEN USING OUTSIDE CYLINDER, DRILL #2(.159) HOLES FOR #10-32 SCREWS BOTH SIDES AND COUNTERSINK INTERIOR ONLY.

NOTE 1: DRILL #2(.159) AND COUNTERSINK 5 HOLES FOR #10-32 FLAT HEAD SCREWS.

NOTE: THESE DIMENSIONS AND TEMPLATES ASSUME A DOOR 1.75" THICK WITH 1/8" STILE WALL. DOORS WITH OTHER THICKNESS OR WALL WILL REQUIRE MODIFICATION TO THE DEVICE AND TO TEMPLATES (H) AND (E).

INSTALLATION



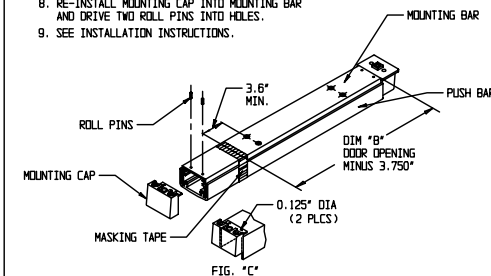
METRIC EQUIVALENTS

INCHES	MM	INCHES	MM	INCHES	MM	INCHES	MM	INCHES	MM	INCHES	MM
0.125	3.18	0.687	17.45	1.250	31.75	27.25	692.15	42	1066.80	5/16	7.92
0.250	6.35	0.750	19.05	1.375	34.92	30	762.00	45.25	1149.35	5/8	15.88
0.375	9.52	0.87	22.10	2.000	50.80	33.25	844.55	48	1219.20		
0.500	12.70	1.00	25.40	3.6	91.44	36	914.40				
0.625	15.87	1.05	26.67	3.750	95.25	39.25	996.95				

BACKSET 1.05"	DOOR OPENING WIDTH			
	30"	36"	42"	48"
DIM A	27.25	33.25	39.25	45.25

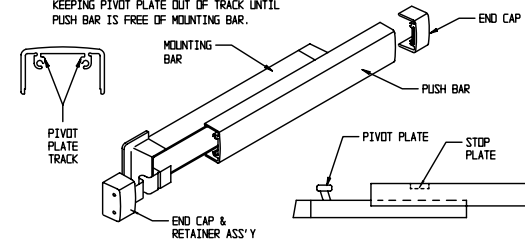
CUT-OFF INSTRUCTIONS FOR NON-STANDARD DOORS

1. DRIVE OUT TWO ROLL PINS.
2. REMOVE MOUNTING CAP.
3. COLLAPSE BAR AND TAPE DOWN IN THE AREA OF CUT-OFF.
4. DETERMINE EXTRUSION LENGTH ("B" DIM). (NOTE: 3.6" MINIMUM DIMENSION FROM RIVET CENTERLINE TO NEW CUT-OFF LENGTH AS SHOWN).
5. MEASURE MOUNTING BAR (NOT PUSH BAR), AND MARK EXTRUSION LENGTH ON TAPE.
6. SAW OFF EXCESS LENGTH, REMOVE TAPE AND DEBURR.
7. LAY MOUNTING CAP OVER MOUNTING BAR (FIG "C"), AND USE AS A GUIDE TO DRILL 0.125" DIA HOLES.
8. RE-INSTALL MOUNTING CAP INTO MOUNTING BAR AND DRIVE TWO ROLL PINS INTO HOLES.
9. SEE INSTALLATION INSTRUCTIONS.



SEPARATING PUSH BAR AND MOUNTING BAR PROCEDURE

1. REMOVE BOTH END CAPS. THE RETAINER IS ATTACHED TO THE NOSE END CAP.
2. SLIDE PUSH BAR TOWARD HINGE SIDE OF DOOR.
3. CONTINUE TO SLIDE PUSH BAR PAST THE PIVOT PLATE THAT RIDES IN PUSH BAR TRACK.
4. SLIDE PUSH BAR IN OPPOSITE DIRECTION KEEPING PIVOT PLATE OUT OF TRACK UNTIL PUSH BAR IS FREE OF MOUNTING BAR.



INSTALLING PUSH BAR TO MOUNTING BAR

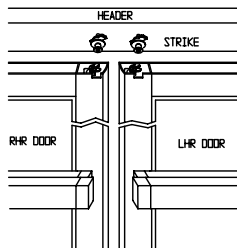
1. WITH PUSH BAR IN HAND AND MOUNTING BAR ATTACHED TO DOOR, FIND STOP PLATE STAKED INTO PUSH BAR. (THIS PLATE IS ON THE LATCH END OF ASSEMBLED UNIT). SLIDE THE PIVOT PLATE NEAREST HINGE INTO TRACK OF PUSH BAR UNTIL SECOND PIVOT PLATE IS EXPOSED. INSERT PIVOT PLATE INTO TRACK ON PUSH BAR AND SLIDE IN OPPOSITE DIRECTION UNTIL PUSH BAR AND MOUNTING BAR ALIGN.

ADAMS RITE MANUFACTURING COMPANY
POMONA, CALIF. 91767

8600 EXIT DEVICE

INSTALLATION INSTRUCTION CHECKLIST

ADAMS RITE
SERIES 8600 EXIT
DEVICE

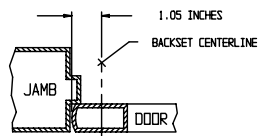


IMPORTANT!

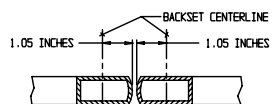
This device is unhandled. It can be installed in either left hand reverse or right hand reverse doors without alteration. The doors' lead stile and header preparation are IDENTICAL not mirror image. Note in the sketch above that the yoke type bolt *always* faces right (as viewed from inside) and the strike post is toward the right of the backset centerline for both doors.

NOTE STEPS 1 THRU 9 ARE MORE EASILY ACCOMPLISHED IF DOOR IS NOT INSTALLED IN FRAME.

HOW TO FIND BACKSET



SINGLE DOOR



PAIR DOOR

