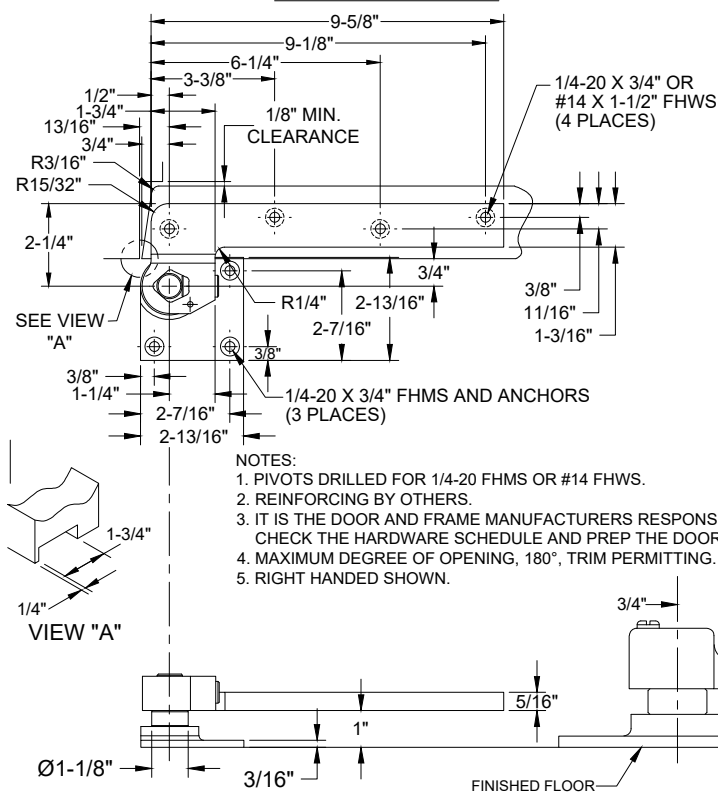
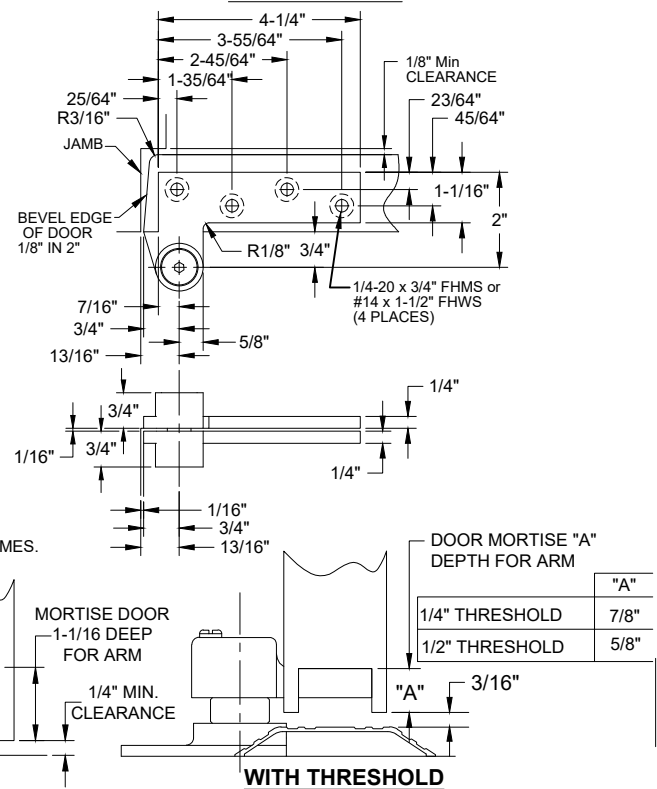


0147 PIVOT SET, 3/4" OFFSET, HANDED

0147 BOTTOM PIVOT

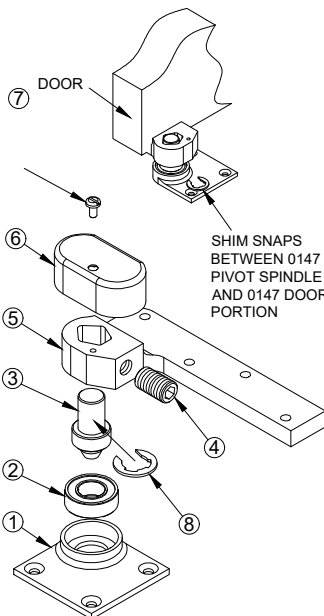


0180 TOP PIVOT

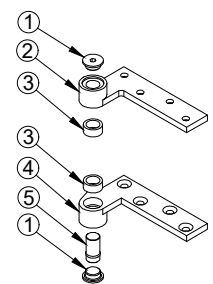
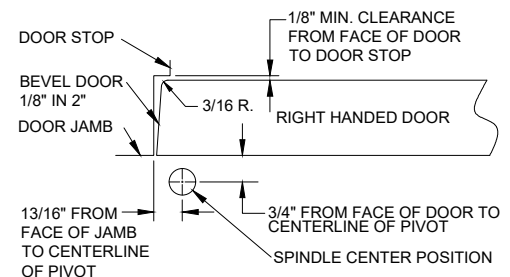
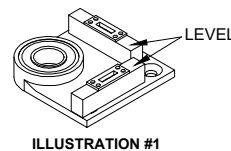
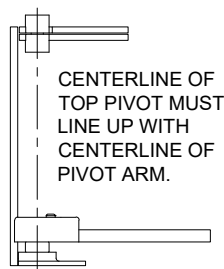


INSTALLATION INSTRUCTIONS

1. MEASURE $\frac{13}{16}$ " OUT FROM DOOR JAMB.
2. ALLOW $\frac{1}{8}$ " MIN CLEARANCE FROM DOOR STOP TO DOOR FACE. MEASURE DOOR THICKNESS AND ADD $\frac{3}{4}$ ".
3. WHERE THESE LINES INTERSECT DETERMINES THE CENTERLINE OF THE PIVOT POINT.
4. FLOOR PORTION MUST BE INSTALLED COMPLETELY LEVEL IN BOTH DIRECTIONS PER ILLUSTRATION #1.
5. INSTALL 0180 DOOR PORTION PER TEMPLATE
6. INSTALL 0180 JAMB PORTION PER TEMPLATE.
7. INSTALL 0147 DOOR PORTION PER TEMPLATE.
8. IF 019 INTERMEDIATE PIVOT IS USED, SEE 019 TEMPLATE.
9. SET DOOR ON 0147 FLOOR PORTION BEARING.
10. PUSH 0180 PIVOT PIN IN PLACE AND SECURELY TIGHTEN 0180 END CAP.
11. IF DOOR DRAGS AT FLOOR (OR THRESHOLD, IF USED) LOOSEN SET SCREW AND RAISE DOOR TO DESIRED CLEARANCE AND INSERT $\frac{1}{16}$ " THICK SHIM. RETIGHTEN SET SCREW SECURELY.
12. PUT 0147 COVER ON AND SECURE TIGHTLY WITH 0147 COVER SCREW.



ITEM NO.	QTY.	PART NO.
1	1	0147 FLOOR PORTION
2	1	0147 BEARING
3	1	0147 PIVOT SPINDLE
4	1	0147 SET SCREW
5	1	0147 DOOR PORTION
6	1	0147 COVER
7	1	0147 COVER SCREW
8	1	1/16" SHIM (IF REQUIRED)



ITEM NO.	QTY.	PART NO.
1	2	0180 END CAP
2	1	0180 JAMB PORTION
3	2	0180 NEEDLE BEARING
4	1	0180 DOOR PORTION
5	1	0180 PIVOT PIN

Disclaimer: This template is to be used for installation, as shown, of said product and is not suitable for every application method. Custom applications, where door sizes, weights and conflicting hardware are a factor, need to be addressed with ABH and proper instructions provided. ABH is not liable for failure or performance of the product due to improper installation methods and/or use. Improper use and/or installation of this product will void the standard warranty.

0147-05.DWG

ABH
MANUFACTURING INC.


www.abhmfg.com
E-mail: abhinfo@abhmfg.com
Architectural Builders Hardware Mfg., Inc.
1222 Ardmore Ave., Itasca, IL 60143
630.875.9900: FAX 800.9FAXABH (932.9224)

DISTRIBUTED BY



0147

PAGE 1 OF 1

© 2020 ABH Mfg., Inc.
printed in USA

REVISÉD 08-28-20