

II – E1500-9

INSTALLATION INSTRUCTIONS FOR MODEL 1560 AND 1570 ELECTRIC TRIM CONTROL

FOR USE WITH VON DUPRIN 994L AND 996L LEVER TRIM

FUNCTION DESCRIPTION

1560 – FAIL SAFE

- LEVER IS LOCKED WHEN POWER IS APPLIED.
- WHEN POWER IS REMOVED ALLOWS ENTRY BY LEVER HANDLE.
- EXIT DEVICE ALWAYS ALLOWS FREE EGRESS.
- OUTSIDE KEY CYLINDER FUNCTIONS AS A NIGHT LATCH. THIS ALLOWS THE LATCH TO BE RETRACTED BY KEY WHEN OUTSIDE TRIM IS SECURE.

1570 – FAIL SECURE

- LEVER IS LOCKED WHEN POWER IS OFF.
- WHEN POWER IS APPLIED ALLOWS ENTRY BY LEVER HANDLE.
- EXIT DEVICE ALWAYS ALLOWS FREE EGRESS.
- OUTSIDE KEY CYLINDER FUNCTIONS AS A NIGHT LATCH. THIS ALLOWS THE LATCH TO BE RETRACTED BY KEY WHEN OUTSIDE TRIM IS SECURE.

ELECTRIC TRIM SOLENOID CONTROL RATING

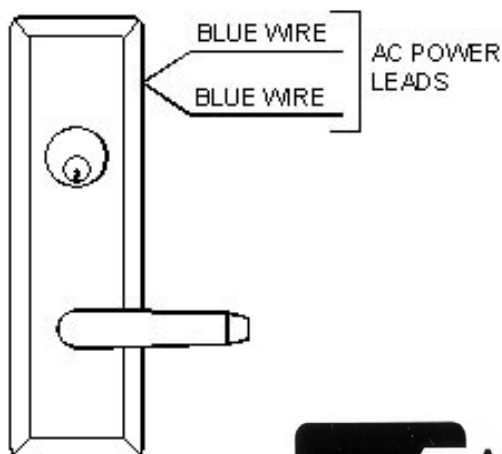
MODELS: 1560 – FAIL SAFE CONTROL (POWER LOCK)

1570 – FAIL SECURE CONTROL (POWER UNLOCK)

NOTE: FOR FUNCTION CHANGE SEE DIAGRAM ATTACHED AT END OF INSTRUCTIONS.

.33 AMP @ 24 VOLTS AC OR DC ± 10% (CONTINUOUS DUTY)

WIRING DIAGRAM



INSTALLATION INSTRUCTIONS 1560 AND 1570 ELECTRIC TRIM CONTROL

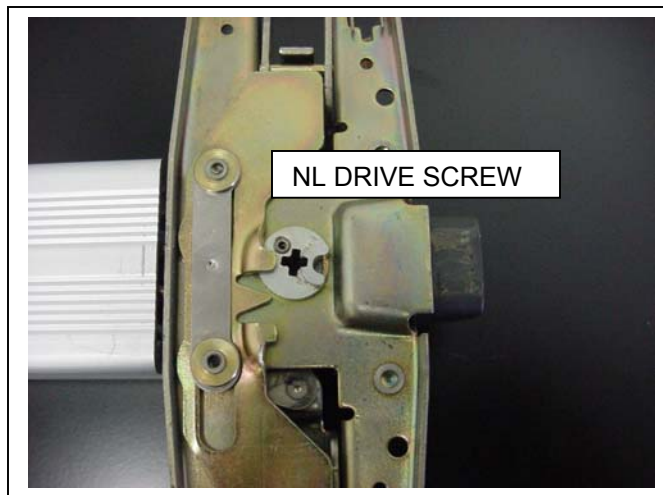
VON DUPRIN 994L/996L RIM AND VERTICAL BREAKAWAY TRIM



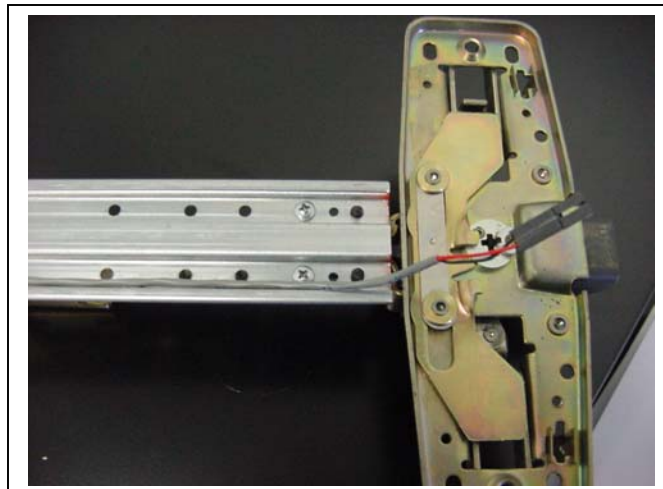
EXIT DEVICE PREPARATION

NOTE: USE MANUFACTURERS INSTRUCTIONS FOR DEVICE MOUNTING.

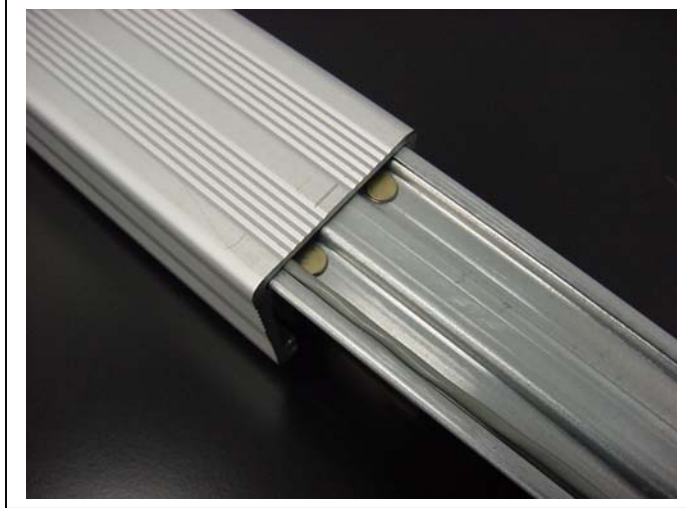
- DO NOT REMOVE (NL) DRIVE SCREW FROM BACK OF DEVICE. SCREW MUST BE LEFT IN PLACE FOR PROPER KEY FUNCTION (NIGHT LATCH).



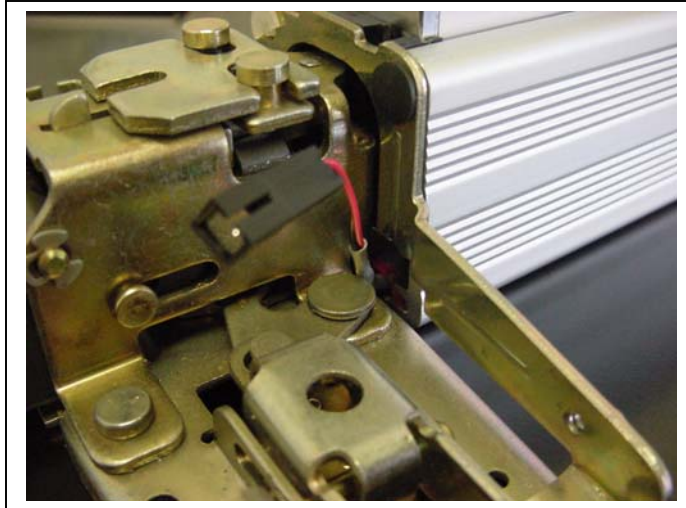
- SLIDE OUTSIDE CHANNEL FROM DEVICE AND INSTALL DOOR CABLE IN BOTTOM OF DEVICE BASEPLATE ASSEMBLY AS SHOWN BELOW.



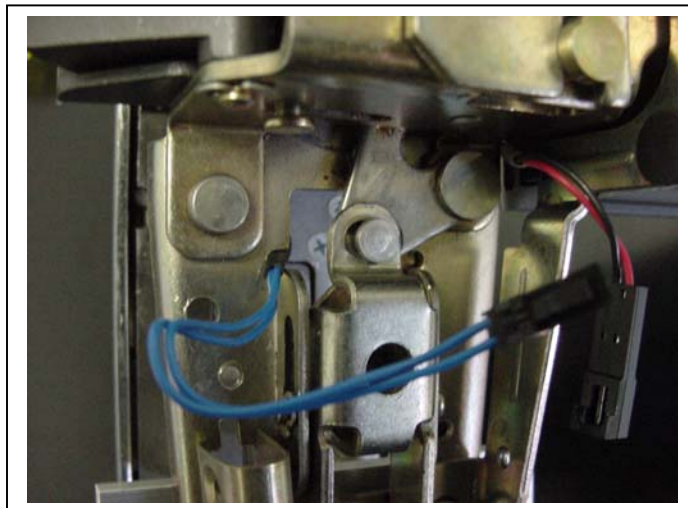
- ALLOW APPROXIMATELY 2" INCHES OF CABLE PLUS THE CONNECTOR TO BE LEFT ON THE LATCH SIDE AS SHOWN.
- SLIDE THE CHANNEL BACK ONTO THE BASE PLATE ASSEMBLY.



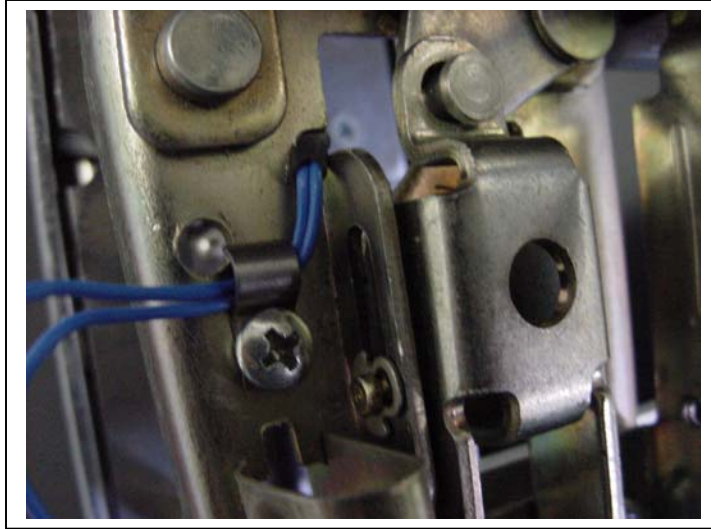
- WRAP WIRES AROUND TO THE ACTIVE SIDE OF DEVICE CENTER CASE.



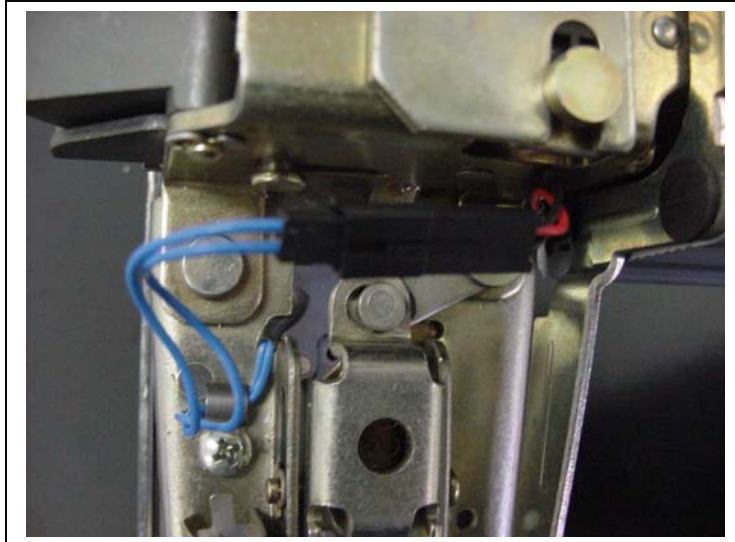
- PUSH WIRES AND CONNECTOR FROM TRIM THROUGH THE PREP HOLE IN DOOR. PREP HOLE IS SHOWN ON TEMPLATE NUMBER (E1500-11 ATTACHED AT END OF INSTRUCTIONS).
- USE MANUFACTURERS INSTALLATION INSTRUCTIONS FOR MOUNTING TRIM AND EXIT DEVICE.
- BRING WIRES FROM TRIM CONTROL THROUGH THE DEVICE CENTER CASE AS SHOWN BELOW.



- STRAIN RELIEF WIRES TO EXISTING HOLE IN CENTER CASE. USE THE WIRE CLAMP AND SELF-TAPPING SCREW PROVIDED WITH TRIM.



- CONNECT THE WIRES FROM THE TRIM TO THE CABLE CONNECTOR AS SHOWN.



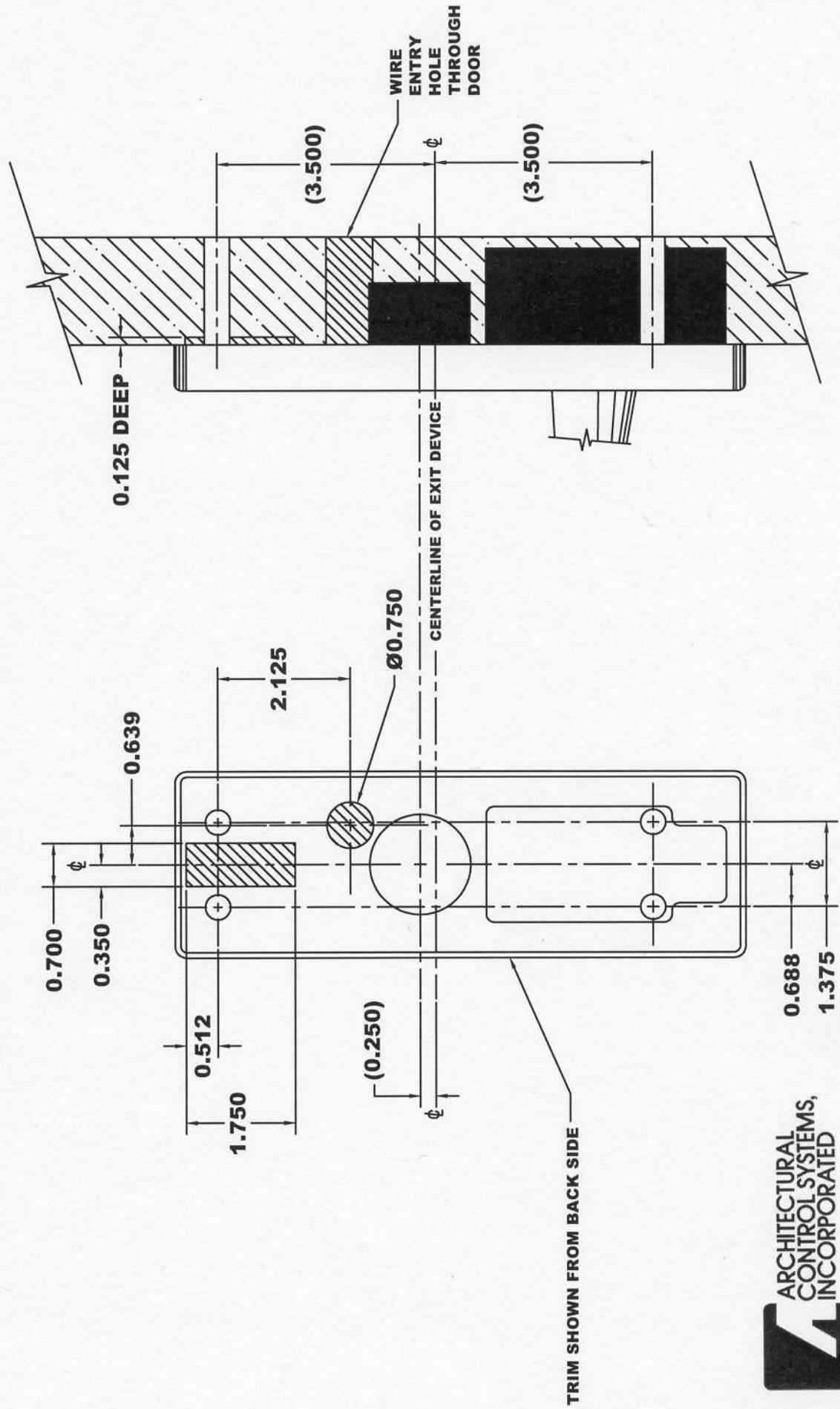
- USE TEMPLATE NO. E1500-3 (EXIT DEVICE TEMPLATE) FOR PROPER TERMINATION OF WIRES TO THE POWER TRANSFER DEVICE.



E1500-11

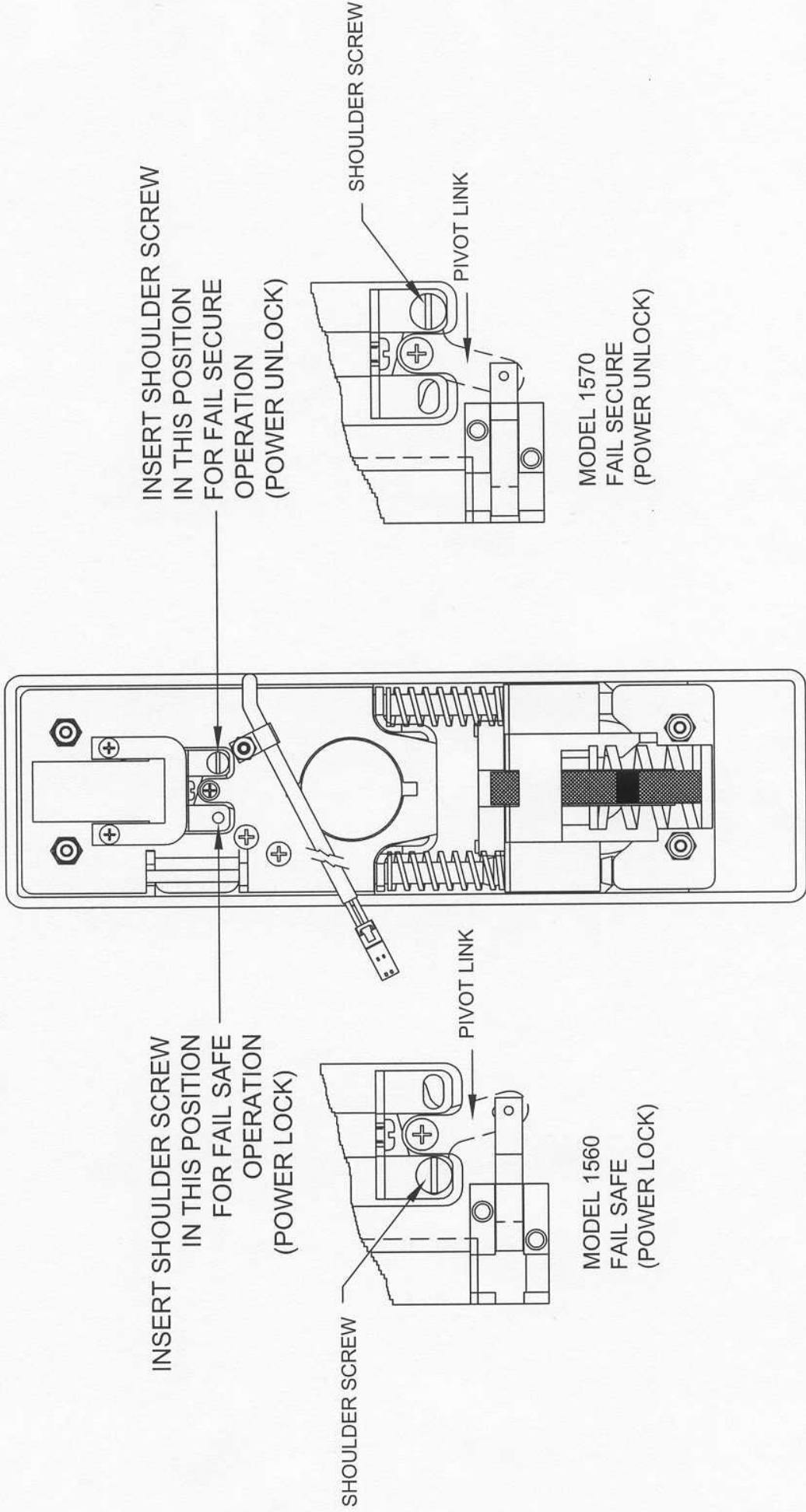
EXIT DEVICE TEMPLATE FOR WOOD, COMPOSITE AND HOLLOW METAL DOORS
 FOR USE WITH MODEL 1560 AND 1570 VON DUPRIN 994L AND 996L TRIM CONTROL

- USE MANUFACTURERS TEMPLATE FOR BASIC PREP LOCATION OF HOLES AND CUTOUTS IN DOOR.
- PROVIDE .750 DIA. HOLE THROUGH DOOR TO ALLOW FOR WIRE ENTRY FROM ELECTRIC TRIM CONTROL.
 NOTE: .750 DIAMETER HOLE IS NOT HANDED. HOLE SHOULD BE LOCATED AS SHOWN FOR ALL HANDINGS.
- PROVIDE .700 WIDE X 1.750 LONG X .125 DEEP RECTANGLE CUTOUT FOR THE SOLENOID PROJECTION IN DOOR.



ARCHITECTURAL
 CONTROL SYSTEMS,
 INCORPORATED

FUNCTION CHANGE DIAGRAM



- SHOULDER OF SCREW MUST BE INSERTED THROUGH PIVOT LINK.
- SHOULDER SCREW MUST BE TIGHTENED FULLY TO AVOID INTERFERENCE.