

LOCK INTO THE ACSI ADVANTAGE



P O W E R S U P P L Y C A T A L O G

THE SINGLE SOURCE FOR ELECTRIC LOCKING DEVICE POWER SUPPLIES

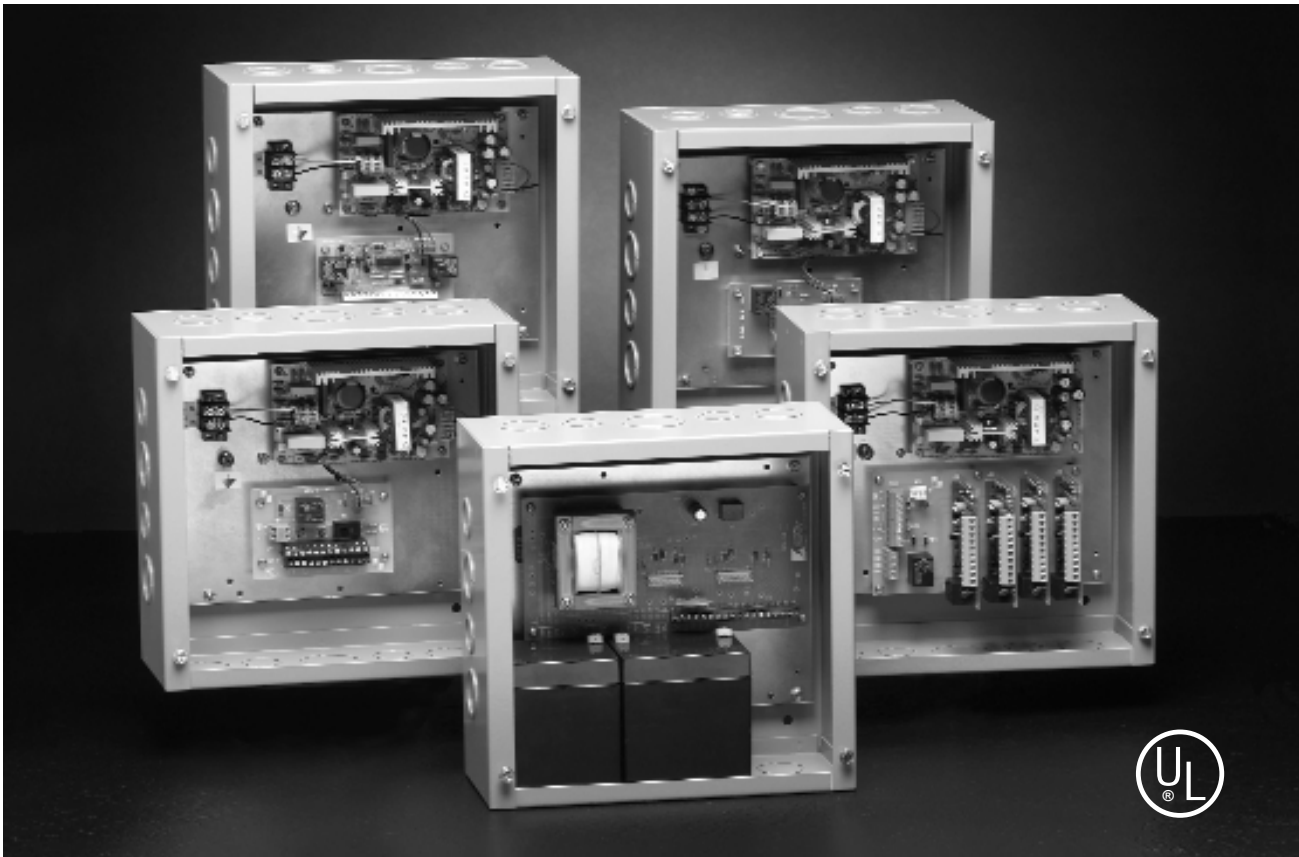


ACSI Series 1400 Power Supplies are designed and manufactured by ACSI engineers to operate a variety of electric locking devices that will meet the most sophisticated specifications.

ACSI system engineers are available to assist you in the selection of the power supply that best meets your application. All ACSI designed systems include riser diagrams and point-to-point wiring diagrams that allow ease of interface with life safety and security systems.

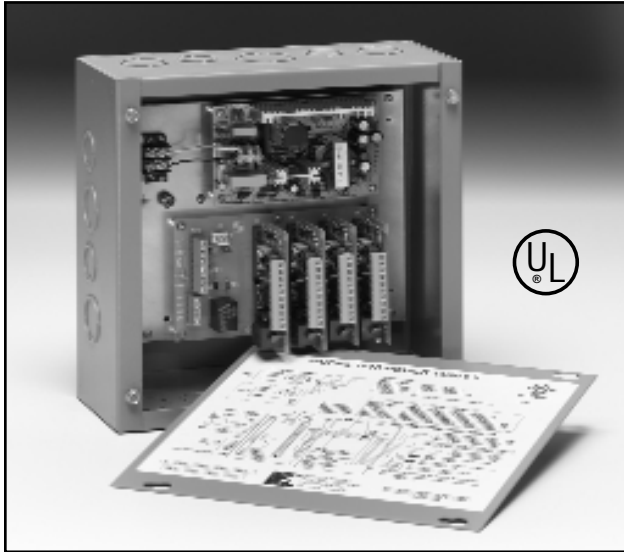
Architectural Control Systems, Inc.
 10666 Gateway Blvd.
 St. Louis, MO 63132
 314-432-5588
 FAX: 314-432-2090
 1-800-753-5558
www.acsi-inc.com

1410, 1420, 1440, 1400-6100 POWER SUPPLIES

**Features**

- UL Listed
- Filtered/Regulated 24VDC
- 2 amp load capacity
- Overload protection
- Over voltage protection
- Short circuit protection
- Surge suppression on fail safe and fail secure outputs
- Automatically accepts 120VAC or 240VAC input

1410 POWER SUPPLY



Separate plug-in p.c. boards used to control interlocking doors can be programmed for normally locked or normally unlocked operation.

Inputs are available for **fire alarm** and optional **emergency release interface** for override of the interlocking system.

Applications include darkrooms, laboratories, pharmaceuticals, detention centers, money counting rooms, airlocks, clean rooms, etc.

ACSI system engineers are available for design and consultation services to coordinate all aspects of the system.

ACSI electric locking systems and all documentation including riser diagrams and point-to-point wiring diagrams can give distributors a **single source** for their system requirements.

ACSI 1410 Interlock Power Supply is designed to interconnect two or more doors using fail safe locking devices. Each supply can control up to four doors; and the system can be expanded for requirements in excess of four doors.

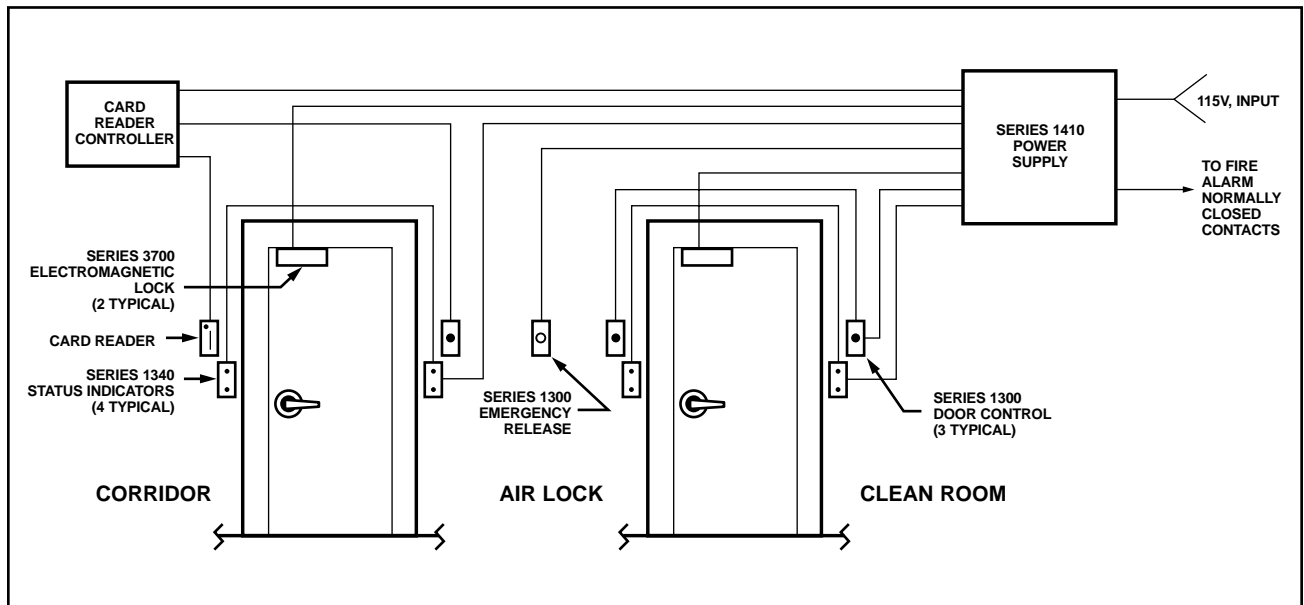
Any one door can be programmed to be part of (common to) as many as three separate interlocking systems.

Models Available

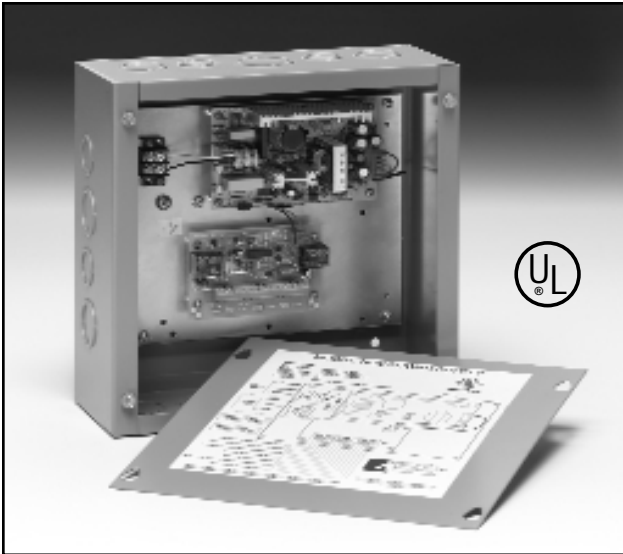
- 1410-2** 2 Door Interlock
- 1410-3** 3 Door Interlock
- 1410-4** 4 Door Interlock

Note: Available with battery back-up, see 1460 Power Supply

ACSI Interlock System



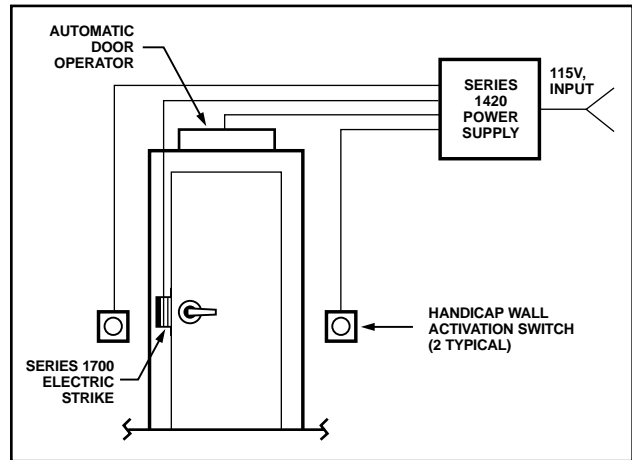
1420 POWER SUPPLY



- Built-in time delay between activation of electrified locking device and automatic door operator
- Input for optional emergency release switch when urgent unlocking of the door is required
- Auxiliary 24VDC constant voltage output
- Separate 24VDC outputs for fail safe and fail secure electrified locking devices

Note: Available with battery back-up, see 1460 Power Supply

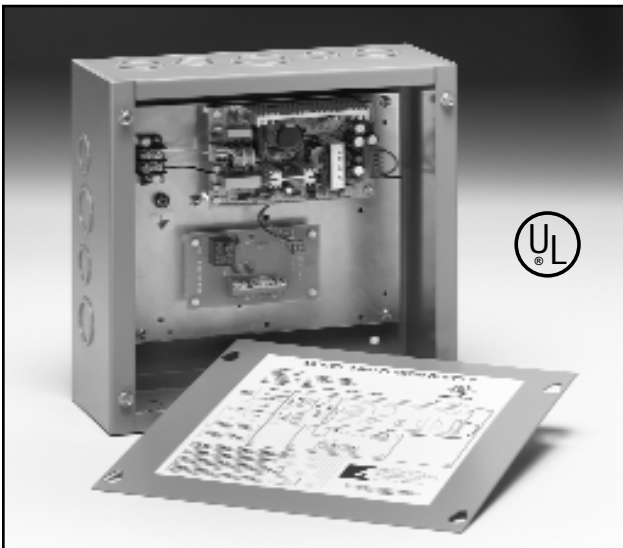
ACSI Automated Door Opening System



ACSI 1420 Power Supply provides power and control for openings with an electrified locking device and **automatic door operator**. Each **1420** includes:

- Separate inputs for activation switch on entry and exit sides of the opening
- Relay contact output to automatic door operator (N.O. or N.C. contacts)

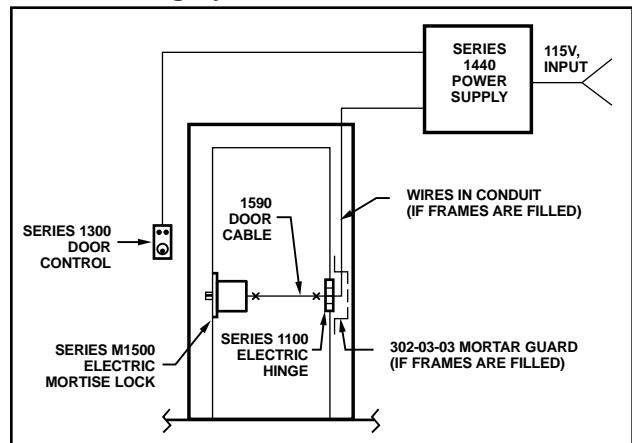
1440 POWER SUPPLY



- Auxiliary 24VDC constant voltage for powering stand alone devices, such as keypads, motion detectors, status indicators, etc.
- Field terminal block set at 45° for ease of installation

Note: Available with battery back-up, see 1460 Power Supply

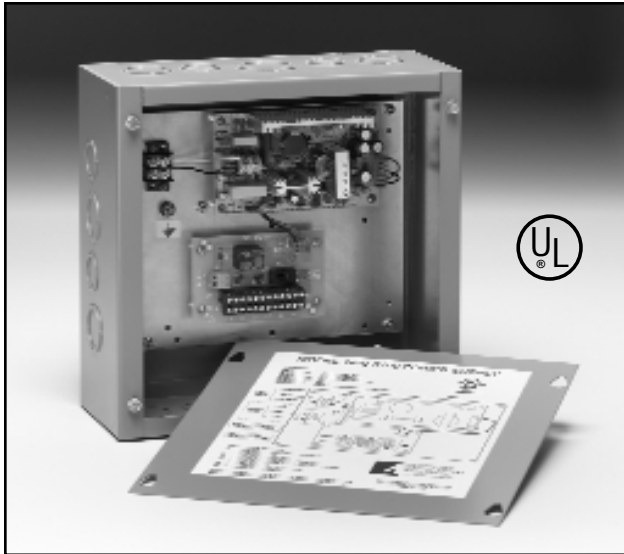
ACSI Locking System



ACSI 1440 Power Supply provides power for fail safe or fail secure locking devices. Each **1440** includes:

- Interface relay to isolate the locking device current from the control switch

1400-6100 POWER SUPPLY



- Up to 1 amp current draw allowable for each of two outputs to electrified locking device
- Inputs available for optional emergency release switch when urgent unlocking of the door is required
- Convenient field wiring of system components

Note: Available with battery back-up, see 1460 Power Supply

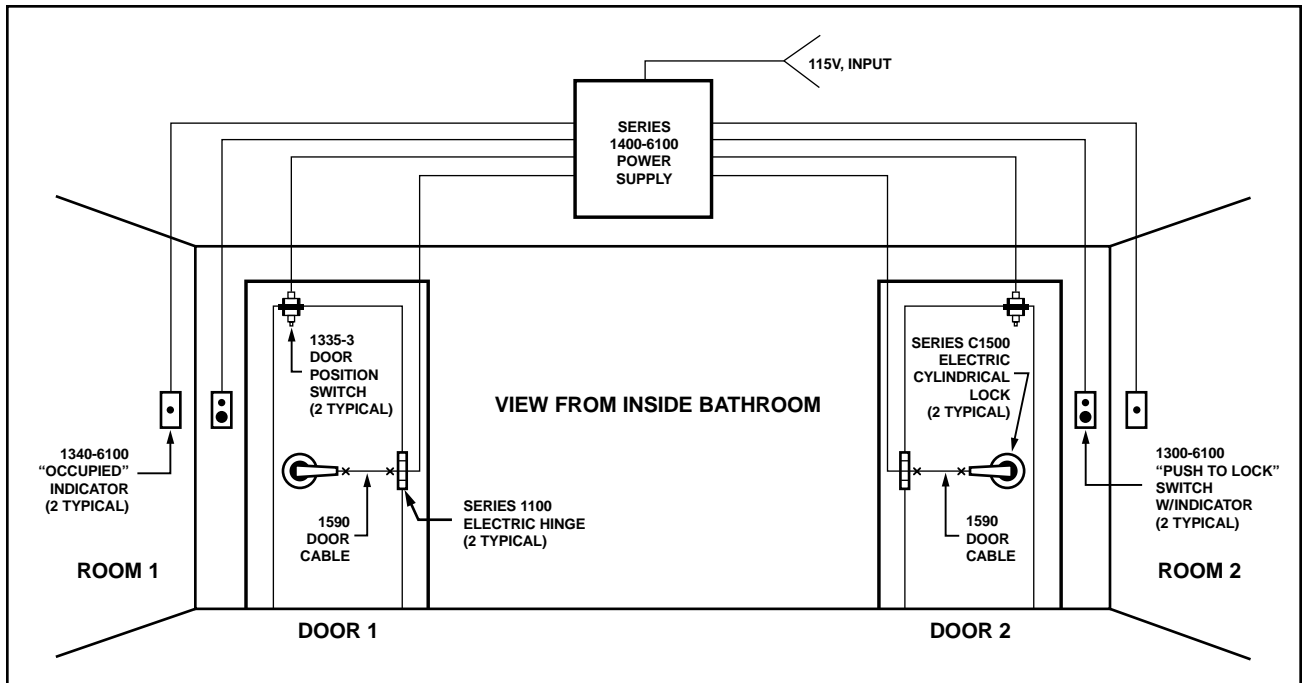
Description of System Operation

When the bathroom is not occupied, both doors are unlocked, and all indicators are extinguished. Upon entering the bathroom from one of the rooms, the occupant depresses the inside push-button switch to lock both doors (both doors must be closed in order for them to lock). When the doors lock, the red indicators inside the bathroom indicate that both doors are locked from the outside. The green indicators outside the bathroom denote that the bathroom is occupied. (Note: Both doors are always free egress and can always be unlocked mechanically from the outside with a key). When the occupant exits either door, both doors automatically return to the unlocked condition and all indicators are extinguished.

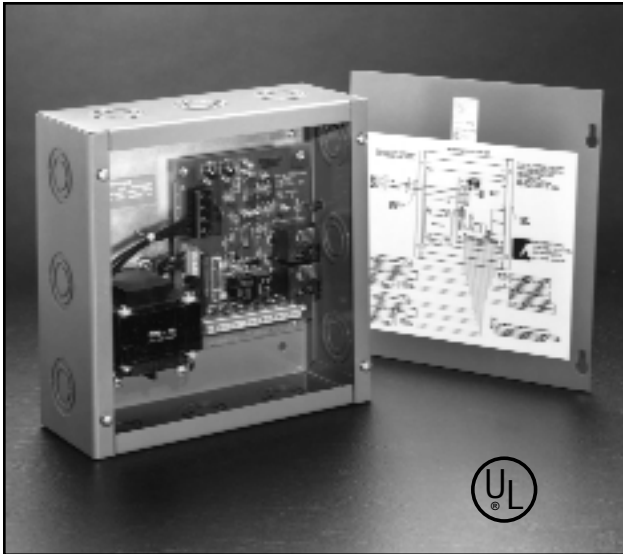
ACSI 1400-6100 Power Supply is used exclusively with the ACSI Series 6100 Communicating Door (Common Bath) System. The ACSI **1400-6100 Power Supply** includes:

- Outputs to electrified locking devices that are field selectable for fail safe or fail secure function

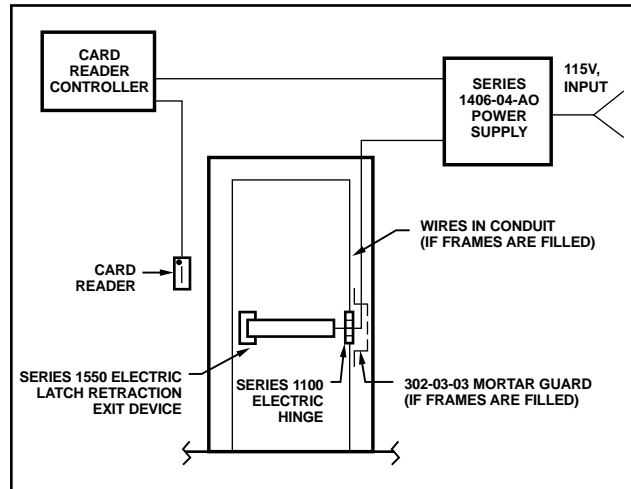
ACSI Communicating Door System



1406/1426 POWER SUPPLIES



ACSI 1406 Application

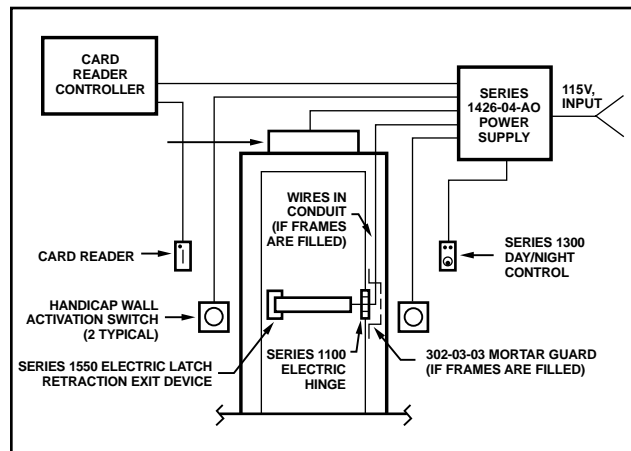


ACSI 1406 and 1426 Power Supplies are designed to operate exit devices equipped with ACSI Series 1550 Electric Latch Retraction.

Features

- UL Listed
- Provides power and control electronics for up to two ACSI 1550 Electric Latch Retraction Exit Devices
- Select from independent control of single exit devices from separate inputs (one or two single doors) or sequential operation of two exit devices from a single input (pair of doors)
- Automatic door operator interface
- Fire alarm interface
- Field adjustable latch retraction time delay
- 24VDC, 12VDC constant voltage outputs (250 mA each)

ACSI 1426 Application with Day/Night Feature

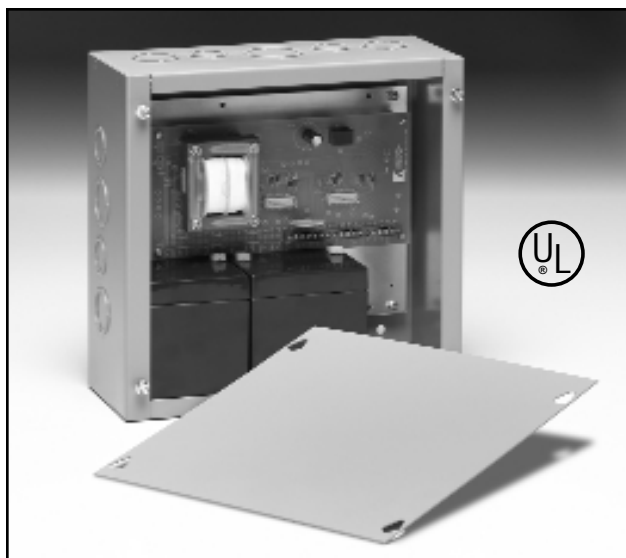


Day/Night Mode-ACSI 1426 Power Supply

Provides a separate input for retracting one exit device or two exit devices sequentially without activating the automatic door operator. While the latches are held retracted, the auto-operator can be activated independently from a different input.

Note: Available with battery back-up, see 1460 Power Supply

1460 BATTERY BACK-UP POWER SUPPLY



The **ACSI 1460 Power Supply** is designed to interface with **ACSI 1410, 1420, 1440, 1400-6100, 1406, and 1426 Power Supplies** providing back-up voltage upon loss of AC power.

Features

- UL Listed
- Provides 2 hours back-up for 2 amp loads, 4 hours back-up for 1 amp loads, or 8 hours for .5 amp loads
- Includes two 12 volt, 4 amp-hour sealed lead acid batteries, battery leads, and power harness adapter
- Overload and short circuit protection
- Battery short circuit solid state protection (PTC)
- Up to 400 mA charging current

1490 DELAYED EGRESS POWER SUPPLY

The **ACSI 1490 Power Supply** is designed to interface with ACSI **electromagnetic locks** in a delayed egress locking application.

Features

- Compliance with NFPA code requirements
- Input for delayed egress activation
- Manual reset of delayed egress alarm
- Optional auto reset available
- Input for fire alarm interface
- Output for audible alarm
- Field adjustable delay for nuisance alarm, door release, request to exit, and auto reset delay times

Description of System Operation

The delayed egress alarm becomes activated when the push bar of the Series 1500 modified exit device is depressed. A concealed AE (request to exit) switch initiates an irreversible cycle that begins with the Series 1300 audible alarm sounding for a predetermined time (field adjustable) while the Series 3700 electromagnetic lock remains energized locking the door.

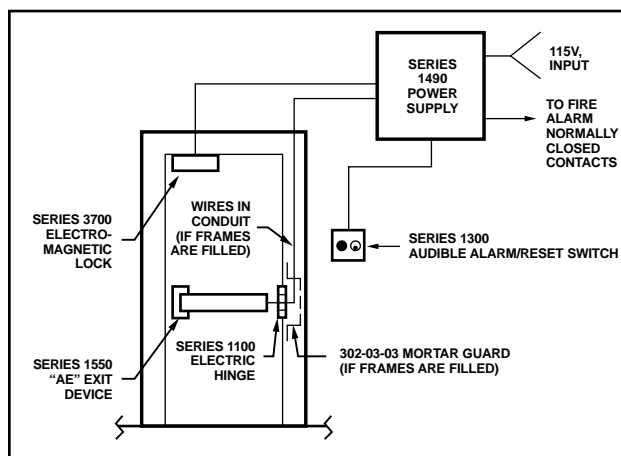
At the end of the timing cycle, the electromagnetic lock de-energizes and unlocks the door while the audible alarm continues sounding. The door will remain unlocked and in an alarm state until manually reset by the Series 1300 key switch. Resetting the system will lock the door by energizing the electromagnetic lock, and will turn off the audible alarm.

Note: The door must be fully closed prior to resetting the system. Resetting with the door open will energize the electromagnetic lock, but will not turn off the audible alarm. The audible alarm will also begin sounding if a forced entry occurs while the system is armed.

In the event of a fire alarm, the electromagnetic lock will immediately de-energize to unlock the door, and the audible alarm will sound. Upon resetting the fire alarm, the system will return to normal standby operation.

A sign above the exit device push bar warns that exiting will be delayed and will also be accompanied by an alarm.

ACSI 1490 Application



SERIES 1400 POWER SUPPLY SPECIFICATIONS

Input

1406, 1426, 1490

- 120VAC, 0.75A, 60Hz

1410, 1420, 1440, 1460, 1400-6100

- 120VAC, 1A, 50/60Hz
- 240VAC, 0.6A, 50/60Hz

Output

1406, 1426

- Main Output: 24VDC, 1.5A Unfiltered/Unregulated
- Auxiliary 24V Output: 24VDC, 0.25A Unfiltered/Unregulated
- Auxiliary 12V Output: 12VDC, 0.25A Unfiltered/Unregulated

1490

- 24VDC, 0.85A Unfiltered/Unregulated

1410, 1420, 1440, 1400-6100

- 24VDC, 2A Filtered/Regulated

1460

- 24VDC, 4 AMP-Hour battery back-up

Enclosure Dimensions/Type

1406, 1410, 1420, 1426, 1440, 1460, 1400-6100

- 10"x10"x4", NEMA Type 1 Screw Cover Junction Box

1490

- 8"x10"x4", NEMA Type 1 Screw Cover Junction Box

Enclosure Weight

1410

- 9 lbs (w/all four plug-in boards installed onto mother board)

1406, 1426

- 12 lbs

1420, 1440, 1490, 1400-6100

- 8 lbs

1460

- 16 lbs (w/batteries)

