

LOCK INTO THE ACSI ADVANTAGE



MODIFICATIONS TO:

ADAMS RITE  
ARROW  
CORBIN RUSSWIN  
DORMA  
DOROMATIC  
MONARCH  
PRECISION  
SARGENT  
VON DUPRIN  
YALE  
and more

SERIES 1500 ELECTRIC EXIT DEVICES CATALOG



## SERIES 1500 ELECTRIC EXIT DEVICES

You supply the exit device and ACSI supplies high quality UL Listed modifications to a wide range of manufacturers exit devices. With over 25 years of electric locking experience, ACSI offers proven design, fast factory delivery and competitive pricing. ACSI engineers and technicians are available to provide system design, wiring diagrams and a variety of technical services.

### ELECTRIC LATCH RETRACTION

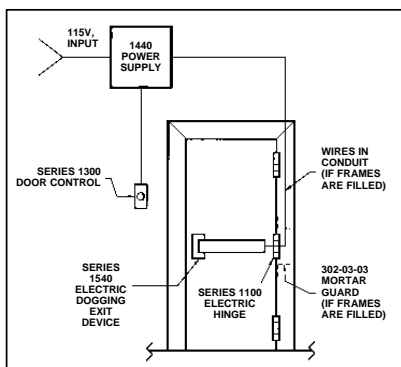
- ACSI Series 1550 Latch Retraction Exit Device modifications provide a remote means of unlocking exit devices.
- UL Listed for both Panic and Fire Exit Hardware
  - Continuous duty solenoids retract the latch bolt for momentary or maintained periods of time
  - Available in Mortise Exits, Rim Exits, Concealed and Surface Vertical Rod Exit Devices
  - Standard ACSI Series 1550 System includes:
    - 1) ACSI Series 1550 Exit Device Modification
    - 2) ACSI Series 1406 or 1426 Latch Retraction Power supply
    - 3) ACSI Series 1100 Electric Hinge (no special unsightly power transfer device required)
  - Options include Authorized Egress Switch, Latch Bolt Monitoring, Signal Switch and Pneumatic Control

**Note:** Electrified Vertical Rod Exit Devices are UL Listed to operate properly on doors not exceeding 48 inches wide and 96 inches high.

### FAIL SAFE OR FAIL SECURE CONTROL

- ACSI Series 1510/1520 Modifications provide a remote means of locking or unlocking of Mortise Exit Devices.
- Fail Safe (Power to Lock) Control
  - Fail Secure (Power to Unlock) Control
  - Continuous Duty Solenoids
  - Options include Authorized Egress Switch and Monitoring
  - No special power supply required

**Series 1540 Typical Installation**



### ELECTRIC TRIM CONTROL

- ACSI Series 1560/1570 Modifications provide a remote means of locking or unlocking of outside lever handle trim controls.
- Fail Safe (Power to Lock) Control
  - Fail Secure (Power to Unlock) Control
  - Continuous Duty Solenoids

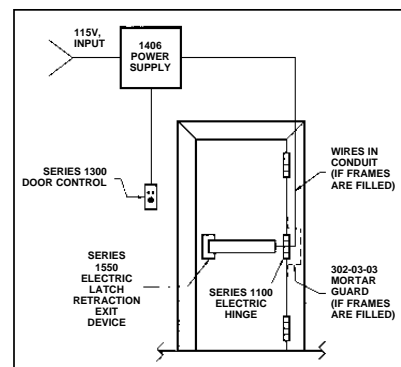
**Note:** Consult Factory for Vertical Rod Devices.

### ELECTRIC DOGGING

- ACSI Series 1540 Electric Dogging provides continuous latch retraction and dogging simultaneously. When the ACSI 1540 is energized, first time mechanical activation of the push bar will continuously hold the push bar and the latch retracted. When power is removed or interrupted from the 1540 exit device, the latch bolt will extend and the push bar is released.
- UL Listed for Fire Exit Hardware
  - Provides quiet egress when electrically dogged - Ideal for theatres, libraries, churches and auditoriums
  - 24VDC operation, no special power supply required
  - Available in Mortise Exit, Rim Exit, Concealed and Surface Vertical Rod Exit Devices

**Note:** Consult factory for Mortise Exit applications. ACSI recommends a 1440 power supply. 1440 options can include an external 24 hour, 7 day or 365 day timer.

**Series 1550 Typical Installation**



# HOW TO ORDER

1 Lock Type	2 Modification Number	3 Lock Part No.	4 Voltage	5 Options	6 Handing
ME	1510	Full Part Number	24VDC	AE	LHR
RE	1520		24VAC/DC	LM	RHR
VR	1540		AIR		
	1550				
	1560				
	1570				
Example:					
RE	1550	8800 (Sargent)		AE	RHR
ME	1520	9975 (Von Duprin)	24VDC		LHR
VR	1540	7120 (Yale)	24VDC		RHR

\*\* ACSI UL Listed 1406-04-AO or 1426-04-AO Power Supply must be used with latch retraction

**1. Lock Type** (Select type of lock to be modified)

Model	Description
ME	Mortise Exit Device
RE	Rim Exit Device
VR	Vertical Rod Exit Device

**2. Modification Number**  
(Select type of modification required)

Model	Description
1510	Fail Safe Control
1520	Fail Secure Control
1540	Electric Dogging
*1550	Latch Retraction
1560	Trim Control - Fail Safe
1570	Trim Control - Fail Secure

**\*Note:** ACSI UL Listed 1406 or 1426 Latch Retraction Power Supply must be used with ACSI 1550 Latch Retraction Modifications.

**3. Lock Part Number**

Enter manufacturer's full lock part number (i.e., 9947, 8600, etc.)

**4. Operating Voltage**

Select required operating voltage  
**24VDC 24VAC Air**

**5. Options**

**Authorized Egress (AE)**  
ACSI Authorized Egress (AE) is an SPDT (Single Pole Double Throw) switch which monitors the push bar of the exit device. The AE Switch can be used to:

- Signal a control console when the push bar is depressed
- Activate a door alarm
- Control an electromagnetic lock for egress
- Shunt a door alarm to allow egress

**Latch Bolt Monitor (LM)**  
Latch Bolt Monitoring is an SPDT switch which monitors the position of the latch bolt for both egress and access.

**6. Handing**

Specify handing of exit device.  
**RHR - Right Hand Reverse**  
**LHR - Left Hand Reverse**

**SERIES 1500 ELECTRIC EXIT DEVICES**

**ELECTRIC EXIT DEVICE MODIFICATION LISTING**

**Note:** If you do not find the lock of your choice listed, please consult with our factory engineering staff. We may request that you send a sample for further evaluation.

Arrow	Corbin Russwin	Dorma	Monarch	Precision	Sargent	Von Duprin	Yale
SL	ED4000	F6000*	F-18*	800	700	33	7000
S1100	ED5000	F4000*		800S	900	35	
S1200				FL1100*	80	98	
S3000				FL1200*	20	99	
				FL1300*			
				FL1800*			

\* Available in ACSI 1540 only. Consult factory for UL listed modifications.

**ELECTRIC EXIT DEVICE LATCH RETRACTION COMPARISON CHART**

Manufacturer	Latch Retraction Part No.	Power Supply Part No.	Latchbolt Monitor Part No.	Request To Exit Part No.
ACSI	1550	1406	LM	AE
Von Duprin	EL	PS872	LX	RX
Sargent	56	3510	—	55
Yale	P	781N	S	B
Corbin Russwin	M94	781N	M91	M92
Precision	ELR	ELR150	—	SS
Monarch	ELR	RDS-2	LM, DM	—
Dorma	ES	ES100	—	MS
Adams Rite	EL	ES100	LM	MS

## 1406 LATCH RETRACTION POWER SUPPLY

Series 1406 Power Supplies are designed and manufactured by ACSI to operate exit devices equipped with ACSI Series 1550 Latch Retraction Modifications.

All 1406 power supplies are supplied with wiring diagrams and detailed installation instructions. ACSI Engineers are available for any questions or consultation regarding wire gauge size, wire run length, or system operation.

- UL Listed
- Built-in adjustable time delay for automatic door operator interface
- Single or multi-door operation from one supply
- Fuse protected
- Fire alarm interface
- 24 volt or 12 volt outputs

**Models Available**

**1406-04-AO** Controls up to two doors

**1426-04-AO** Controls up to two doors, includes day/night mode operation

**Typical 1426 Application**

The 1426 power supply has all the features of the 1406 supply with the addition of a day/night mode for doors with an automatic door operator.

A pair of doors is to be controlled by a computerized time system where it is to be unlatched during business hours. During this time, a handicapped wall switch located on the exterior and interior sides of the door can be used to activate the automatic door operator.

After business hours, the computer locks the pair of doors and disables use of the exterior handicapped wall switch. The inside wall switch remains enabled after business hours and, when actuated, will momentarily retract the latches and activate the automatic door operator. To gain entry, a card reader located on the exterior side of the door momentarily retracts the latches and simultaneously enables the outside wall switch to be activated by the handicapped.

## ELECTRICAL SPECIFICATIONS

**1510/1520**

.33 AMP @ 24 Volts + 2V

.61 AMP @ 12 Volts ± 1V

**1540**

.225 AMP @ 24 Volts ± 2V

**1560/1570**

.33 AMP @ 24 Volts ± 2V

.61 AMP @ 12 Volts ± 1V

**Monitoring Contact Rating**

4 AMP @ 250 VAC

## EXIT DEVICE SWITCH KITS

ACSI K Series Switch Kits are field installed in the touch bar or in the hinge style case of an exit device. K Series Switch Kits include an SPDT (Single Pole Double Throw) switch assembly with long wire leads and easy-to-follow installation instructions. K Switch Kits may be used to:

- Provide instant release of magnetic locks for free egress
- Activate a door alarm
- Signal a control console when the push bar of an exit device is depressed
- Shunt a door alarm to allow free egress

**Models Available**

**K-100** Switch Kit for Von Duprin 33, 99

**K-101** Switch Kit for Von Duprin 55

**K-102** Switch Kit for Von Duprin 88

**K-103** Switch Kit for Sargent 80 Series

**K-104** Switch Kit for Sargent 9600, 9700, 9800, 9900

**K-105** Switch Kit for Sargent 9300, 9400, 9500

**K-106** Switch Kit for Adams Rite 8000, 3000

**K-107** Switch Kit for Corbin Russwin 8000 and Yale 2100

**K-108** Switch Kit for Jackson 1085, 1095

**K-109** Switch Kit for Yale 7000 and Corbin Russwin ED4000, ED5000

**K-110** Switch Kit for Monarch 18, 19

**K-111** Switch Kit for Doromatic 990, 1090

**K-112** Switch Kit for Doromatic 1490, 1590

**K-113** Switch Kit for Corbin Russwin 39, 572

**K-114** Switch Kit for American Device 4000, 6000

**K-115** Switch Kit for Precision FL APEX Series

**K-123** Latch Monitor Kit for Von Duprin 33,99

**K-124** Switch Kit for Precision 2000 Series

**Note:** Field modification of UL Listed devices voids the UL Listing.