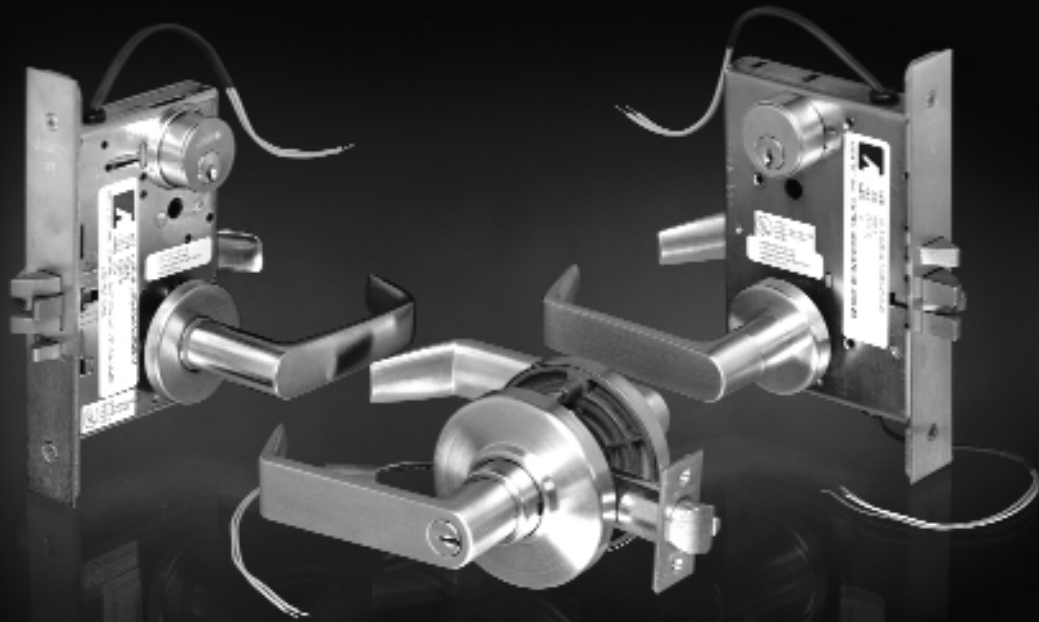


LOCK INTO THE ACSI ADVANTAGE



MODIFICATIONS TO:

ARROW
BALDWIN
BEST
CORBIN/RUSSWIN
FALCON
MARKS
PDO
SARGENT
SCHLAGE
YALE

S E R I E S 1 5 0 0 E L E C T R I C L O C K C A T A L O G



SERIES 1500 ELECTRIC LOCKS

ACSI supplies high quality UL Listed modifications to a wide range of manufacturers locksets. Series 1500 electric locks provide safety and security for stairtower doors or controlled areas where both locking and latching are required. The Series 1500 locks allow remote electric locking or unlocking while conforming to life-safety codes.

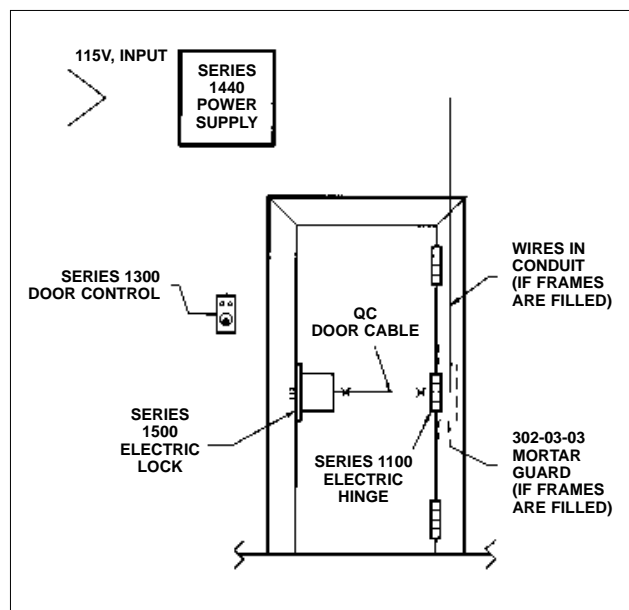
Features

- UL Listed
- Fail Safe (Power Lock)
Outside trim is locked when power is applied and unlocked when power is removed (storeroom function when energized). Lockset will unlock in event of power failure (passage function).
- Fail Secure (Power Unlock)
- Continuous duty solenoids
- 24VDC, 24VAC, 12VDC, 12VAC or pneumatic operation
- When key cylinders are provided in the locks, the latchbolt may be momentarily retracted with key even though electrically locked. NOTE: Locks that are electrically unlocked may not be locked via the key cylinder.
- Security cap monitoring available
- Authorized Egress (Request to Exit) available
- Interface with Life-Safety Systems

Applications

Stairtower doors, office doors, classrooms, interlocks, elevator lobby doors, laboratories, computer rooms, cashier stations, hospital equipment rooms, pharmaceutical storage rooms.

Typical Installation



ELECTRIC LOCK COMPARISON CHART

ACSI	Corbin Russwin	Schlage	Yale	Sargent	Arrow	Best
M1510C-00-1	ML20903	L9080EL	8790	7770	177	35EWEL
	ML20910		8690	8270		35WWEL
M1510C-00-2	ML20901	L9082EL	8794-2	7772		
	ML20920		8694-2	8272		
M1520C-00-1	ML20905	L9080EU	8791	7771	178	35EWEU
	ML20930		8691	8271		
M1520C-00-2	ML20940	L9082EU	8795-2	7773		35WWEU
	ML20940		8695-2	8273		
C1510C-00-1	CL33903	ND80PDEL		10G70	Q177	
C1520C-00-1	CL33905	ND80PDEU		10G71	Q178	

HOW TO ORDER

1 Lock Type	2 Modification Number	3 Options	4 Locking	5 Lock Part No.	6 Operating Voltage	7 Quick Connect Cable	8 Handing
M	1510	AE	1	Full	24VDC	QC	RH
C	1520	LM	2	Part	24VAC/DC		LH
MU		SM		Number	12VDC		RHR
					12VAC/DC		LHR
Example:							
M	1510	AE	1	L9070 (Schlage)	24VDC		RH

1. Lock Type (Select type of lock to be modified)

Model	Description
M	Mortise Lock
C	Cylindrical Lock
MU	Unit Lock

2. Modification Number
(Select type of modification required)

Model	Description
1510	Fail Safe Control
1520	Fail Secure Control

3. Options

Authorized Egress (AE)
ACSI Authorized Egress (Request to Exit) is a SPDT switch which monitors the activation of the INSIDE trim.

- The **AE** switch can be used to:
- Shunt a door alarm to allow egress
 - Signal a control console when the trim is activated
 - Activate a door alarm
 - Control an electromagnetic lock for egress

Latch Bolt Monitor (LM)*
• Latch bolt monitoring is a SPDT switch which monitors the full extension of the main latch.

Security Monitoring (SM)*
• The ACSI **SM** option monitors, in series, solenoid status (locked or unlocked) and latch status (deadlatch position).

Note: Leave #4 blank if no options are required.
* Not available on cylindrical locks.

4. Locking

Model	Description
1	Standard control locks outside (secure side) trim.
2	Locks both sides – Mortise locks only.

5. Lock Part No.

Distributors supply ACSI with mortise, cylindrical or unit locks for modification. Please supply the lock manufacturer's part number.

Example: L9070, 8237, 8708, ND80, 3357, etc.

Note: Refer to the last page of this catalog section for a complete listing of locks required by ACSI.

6. Operating Voltage

Model	
24VDC	24VAC/DC
12VDC	12VAC/DC

Note: Mortise locks can be supplied with pneumatic control. Consult factory.

7. Handing

Model	Description
RH	Right Hand
LH	Left Hand
RHR	Right Hand Reverse
LHR	Left Hand Reverse

8. Quick Connect Cable

Model	Description
QC	Quick Connect Cable
	• QC4 - 22AWG 2 conductor 6' quick-connect cable with two position connector. Allows for ease of installation in transfer of power from the lock to the electric hinge.

ACCESSORIES

Model	Description
1580-1	AC/DC Converter
1580-2	Voltage Regulator <ul style="list-style-type: none"> Regulates source voltages up to 30 volts DC (35 volts AC) to a 24VDC output level. Works with AC or DC source voltages Can be used with 24VAC/DC rated cylindrical or mortise locks up to 360MA. UL Listed

ELECTRIC LOCK MODIFICATION LISTING

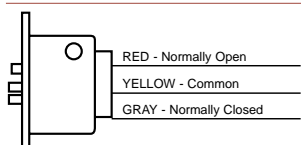
Note: If you do not find the lock of your choice listed, please consult with our factory engineering staff. We may request that you send a sample for further evaluation.

Manufacturer	Mortise Locks	Cylindrical Locks	Unit Locks
Accurate	9100		
Arrow	A17	H12	
	B17	Q12	
	AM17		
	BM17		
Baldwin	6065		
	6065LS		
Best	34H7J		
	35H7J		
Corbin Russwin	2055	3357	UT5257
Falcon	ML561		
PDQ	MR115	GT115	
Sargent	7737	10G04	
	8237		
Schlage	L9050	D80 (Lever)	
	L9070	D53 (Knob)	
	L9080*	D94	
	9453	ND80	
		ND94	
Yale	8708		

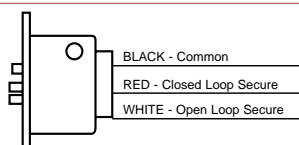
* Schlage L9080 must be supplied with extra spring cage to compensate for lever sag of outside trim.

LOCK SCHEMATICS

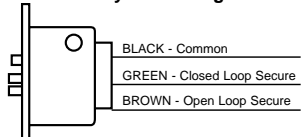
AE - Authorized Egress



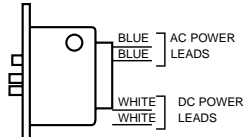
LM - Latchbolt Monitor



SM - Security Monitoring



1510/1520



Note: Red TY-Wrap on leads designates 12 volt

ELECTRICAL SPECIFICATIONS

M1510/1520	12VAC/DC	612 ma
	24VAC/DC	330 ma
C1510/1520	12VAC/DC	250 ma
	24VAC/DC	150 ma
MU1510/1520	12VAC/DC	612 ma
	24VAC/DC	330 ma