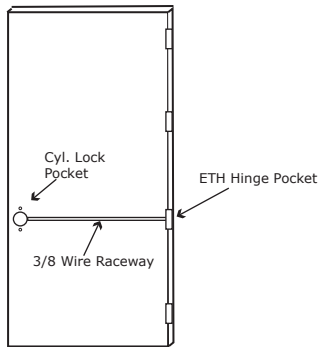


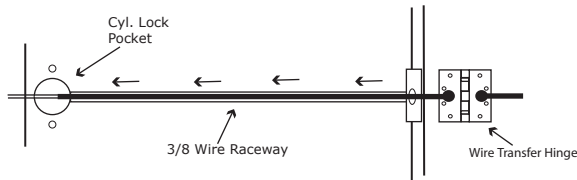
Installation Instructions for Schlage CLN12, 80, 94 & 96 Locks

Modified by: Command Access Technologies

Step 1 - The door must be machined with a 3/8 wire raceway, Cyl. lock pocket & preped for a wire transfer hinge.
Make sure the pocket is free of debris.

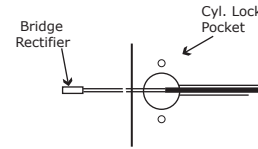


Step 2 - Run the wires from the ETH hinge through the 3/8 race way starting at the ETH hinge & exiting into the lock pocket.

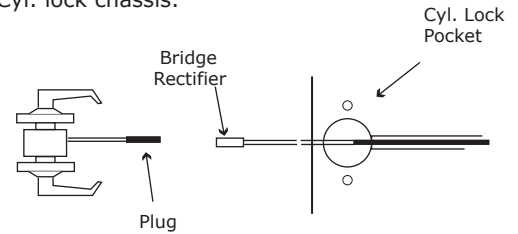


Step 3 - Screw the ETH hinge to the door (at this time **DO NOT** connect the hinge wires on the jamb side to the wires coming from the power supply).

Step 4 - Connect the wires exiting the pocket to the Bridge Rectifier (included).



Step 5 - Connect the Bridge Rectifier to the plug exiting the Cyl. lock chassis.



Step 6 - Carefully slip the connected Cyl. lock chassis into the pocket paying close attention not to pinch any wires

Step 7 - Mount the Cyl. lock per manufacturer's instructions.

Step 8 - Connect the wires from the power supply at the ETH hinge on the jamb side. Connect the hinge to the jamb.

Legend of Terms

EU (Fail Secure): When power is applied the outside trim will unlock. With power removed the outside trim is locked.

EL (Fail Safe): When power is applied the outside trim will lock. With power removed the outside trim is unlocked.

REX (Request to Exit Switch): Monitors the inside handle

Electrical Specifications

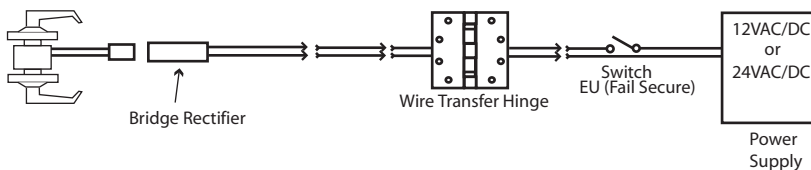
Solenoids:

Volts	Current	Coil Resistance
24VAC/DC	150mA	179.5 Ohms +/- 10%
12VAC/DC	250mA	48.5 Ohms +/- 10%

Switches: 3 Wats .25A 175VAC/DC

REX: Green - Common (C)
 Black - Norm. Open (NO)
 Red - Norm. Closed (NC)

EU (Fail Secure)



EL (Fail Safe)

