



ROFU® ELECTRIC STRIKE MODEL 1403/3403

1403 AND 3403 - SERIES, FACEPLATE SIZE 1¼" x 6⅞"

MODEL 1403 — Fail - Secure (Non Fail - Safe)

MODEL 3403 — Fail - Safe

Electric strikes for use with mortise and cylindrical locksets.
For Commercial and Residential, New and Retrofit Uses



1403/3403
Non-Handed

Standard Features

- Anodized Aluminum Faceplate
- Frame Type - Hollow Metal or Aluminum
- Corrosion - Resistant case and moving parts.
- Tamper Strength Test - 1400 lbs (635kg)
- Cycle Test 500,000 cycles
- Keeper Depth - **5/8"** Maximum Latch Projection possible with 1/8" Door/Frame Clearance - **3/4"**
- Strike Depth 1.50" Overall
- Reversible - Non Handed
- Limited Warranty - **36 Months**

Available in the following Voltages and Finishes:

Specify Finish xUS28 or xUS10B

Voltage, Fail Secure x01=8-16VAC/3-6VDC, x05=12VAC/12VDC, x08=24VAC/24VDC

Voltage, Fail Safe x06=12VDC, x09=24VDC

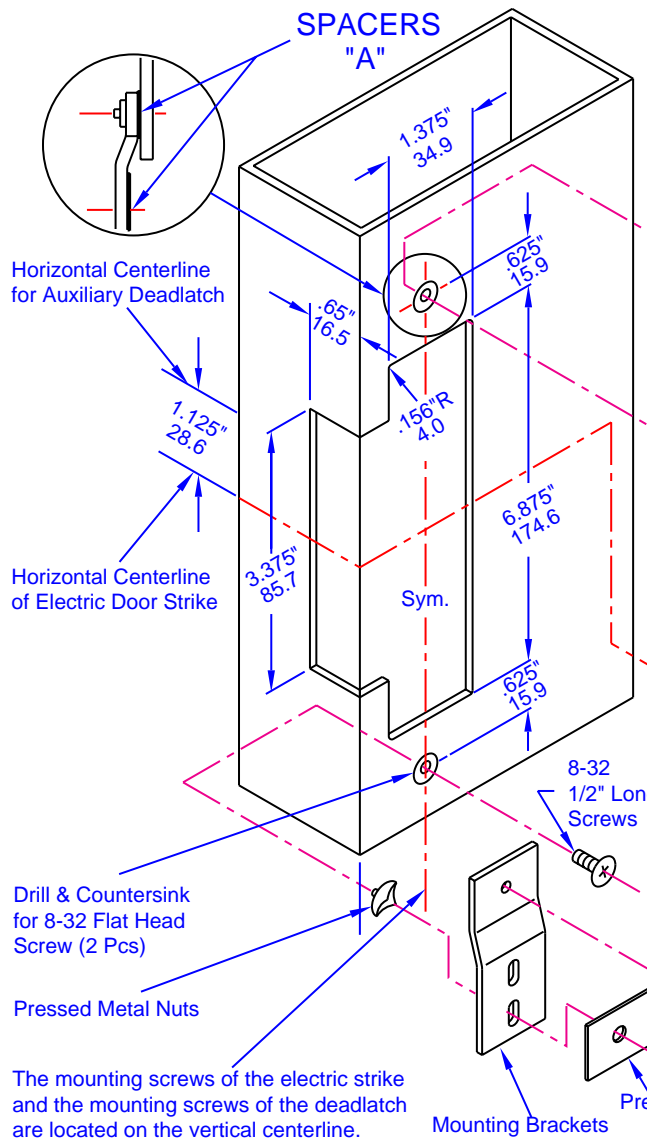
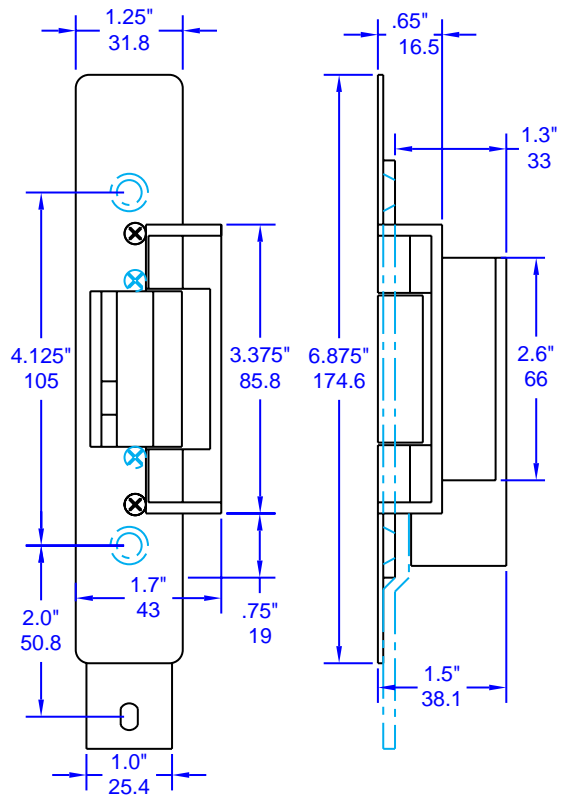
Optional Features:

- Adjustable Keeper (FAFIX), available for 3403 series. Specify FAFIX
- Radius Faceplate for Aluminum Jamb, Specify "RAD."
- 2" Lip Extension, specify #10002.

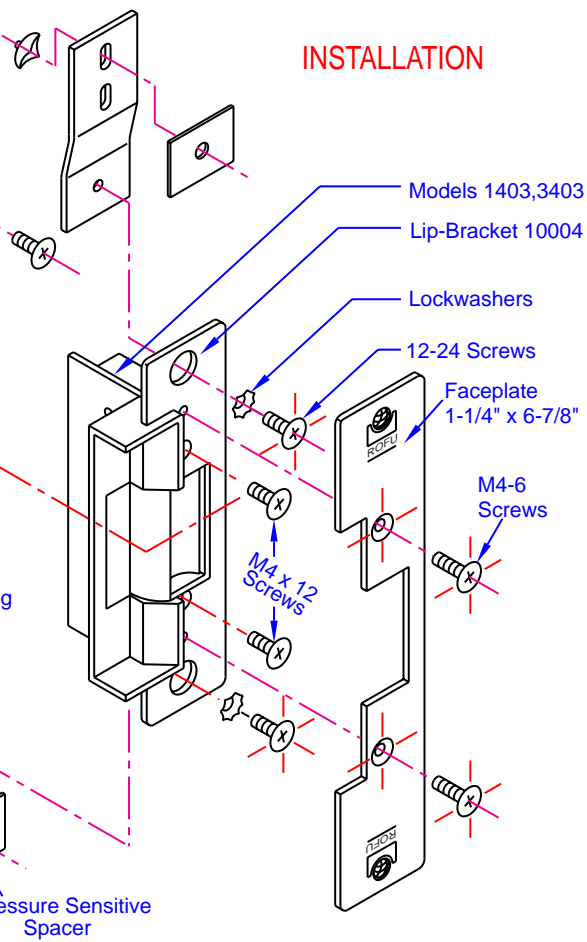


LINE ART FOR 1403/3403

**ALUMINUM JAMB PREPARATION
FOR RADIUS ALUMINUM JAMB SEE PAGE**



INSTALLATION



**RADIUSED ALUMINUM JAMB PREPARATION
MODELS 1403, 3403 AND 1703**

