



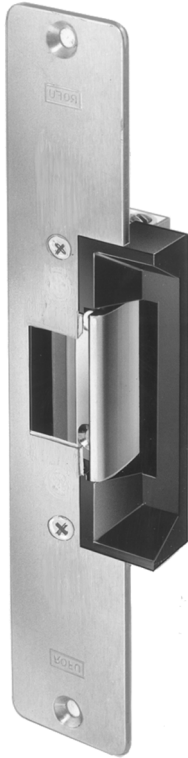
ROFU® ELECTRIC STRIKE MODEL 1704

1704 - SERIES, FACEPLATE SIZE 1⁷/₁₆" x 7¹⁵/₁₆"

MODEL 1704 — Fail - Secure (Non Fail - Safe)

Electric strikes for use with mortise and cylindrical locksets.

For Commercial and Residential, New or Retrofit Uses



1704
Non-Handed

Standard Features

- Anodized Aluminum Faceplate
- Frame Type - Hollow Metal, Aluminum or Wood
- Corrosion - Resistant case and moving parts.
- Tamper Strength Test - 1000 lbs (454kg)
- Cycle Test 500,000 cycles
- Keeper Depth - **9/16"** Maximum Latch Projection possible with 1/8" Door/Frame Clearance - **11/16"**
- Strike Depth 1.50" Overall
- Reversible - Non Handed
- Adjustable Keeper (FAFIX)
- Limited Warranty - **36 Months**

Available in the following Voltages and Finishes:

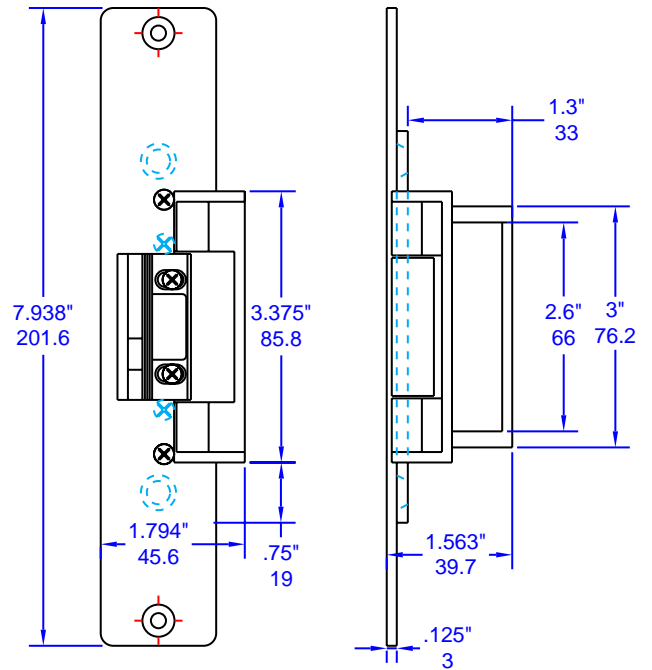
| | |
|----------------------|--|
| Specify Finish | xUS28, US10B or xUS4 |
| Voltage, Fail Secure | x01=8-16VAC/3-6VDC (Intermittent Duty) |
| | x04=12VAC/12VDC (Intermittent Duty) |
| | x05=12VDC (Continuous Duty) |
| | x07=24VAC/24VDC (Intermittent Duty) |
| | x08=24VDC (Continuous Duty) |
| | x14=48VAC/48VDC (Intermittent Duty) |

Optional Features:

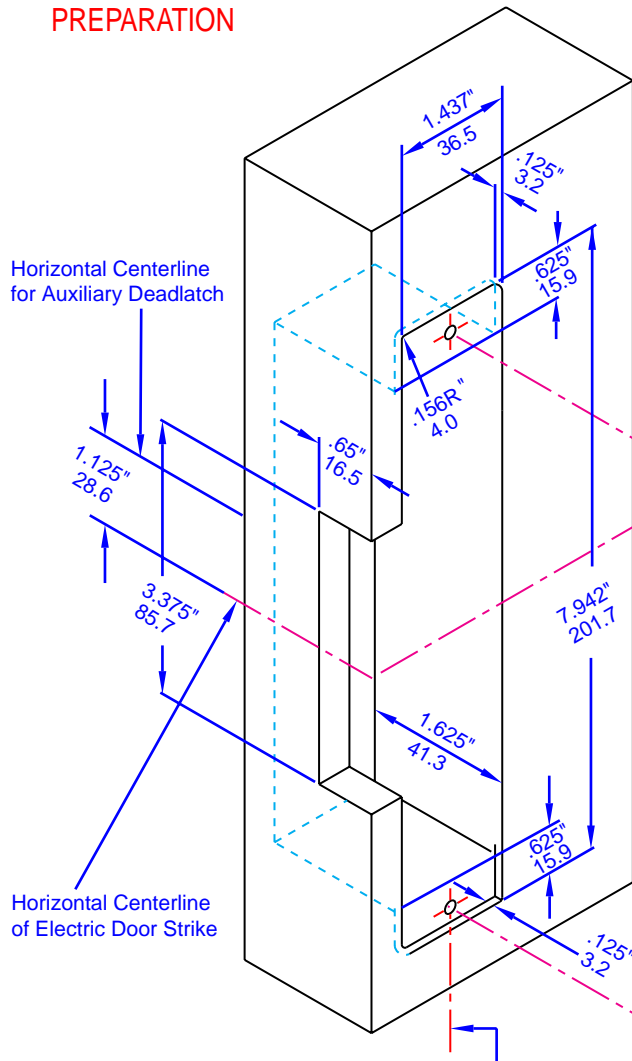
- 2" Lip Extension, specify #10002.



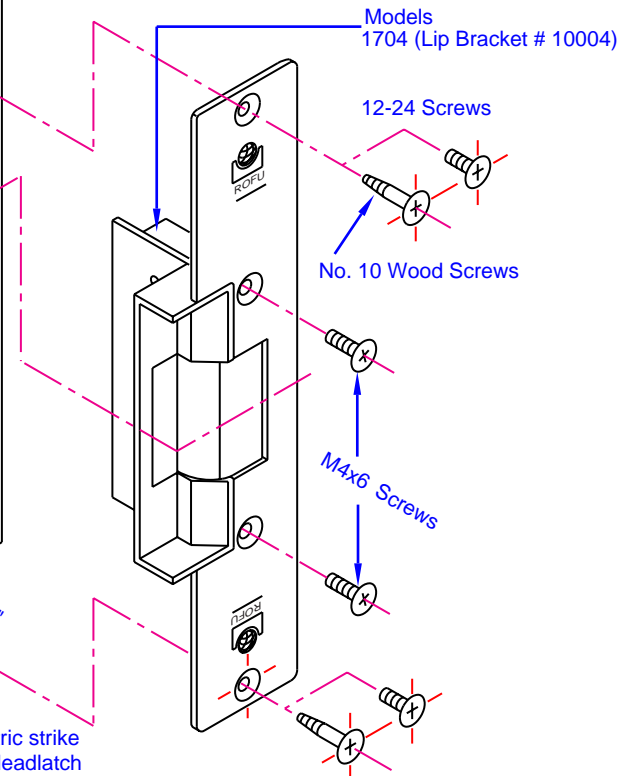
LINE ART FOR 1704



WOOD JAMB PREPARATION



INSTALLATION



The mounting screws of the electric strike and the mounting screws of the deadlatch are located on the vertical centerline.