

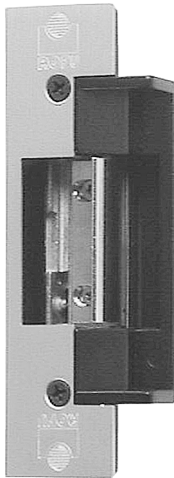


ROFU[®] ELECTRIC STRIKE MODEL 1802

1802 - SERIES, WITH ANSI FACEPLATE 1¼" x 4⁷/₈"
MODEL 1802 — Fail - Secure (Non Fail - Safe)
Electric strikes for use with mortise and cylindrical locksets.
For Commercial and Residential, New or Retrofit Uses



Standard Features



1802
Non-Handed

- **Retrofits into the most popular prep in the industry!**
- Anodized Aluminum ANSI size Faceplate
- Frame Type - Hollow Metal, Aluminum or Wood
- Tamper Strength Test - 1000 lbs (454kg)
- Cycle Test 500,000 cycles
- Keeper Depth - **1/2"** Maximum Latch Projection possible with 1/8" Door/Frame Clearance - **5/8"**
- Strike Depth 1.50" Overall
- Reversible - Non Handed
- Adjustable Keeper (FAFIX)
- Built-in MOV for Spike Suppression
- Limited Warranty - **36 Months**

Available in the following Voltages and Finishes:

Specify Finish xUS28, US10B or xUS4
Voltage, Fail Secure x01=8-16VAC/3-6VDC (Intermittent Duty)
 x04=12VAC/12VDC (Intermittent Duty)
 x05=12VDC (Continuous Duty)
 x07=24VAC/24VDC (Intermittent Duty)
 x08=24VDC (Continuous Duty)



Line Art for 1802

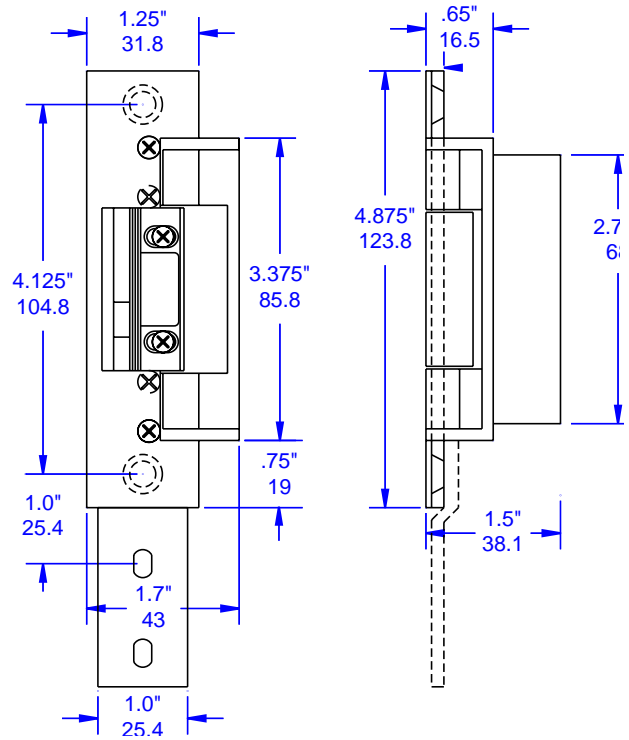
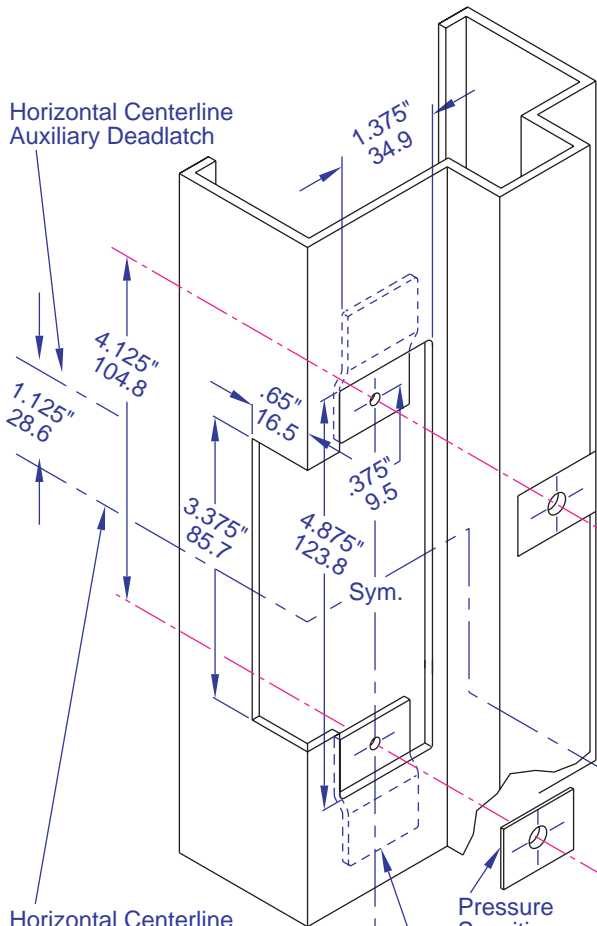
Added benefits to this series:

The 1800 Series has a different Lip bracket.

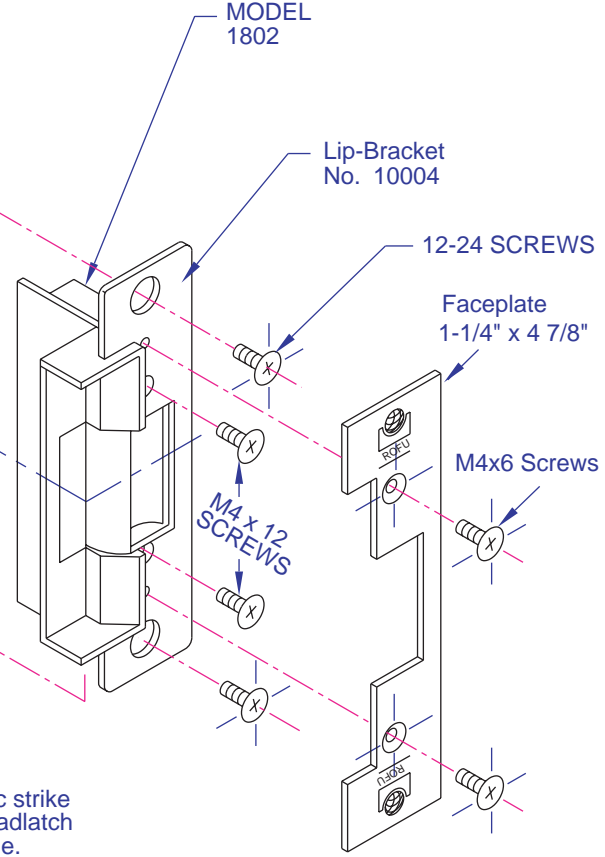
The Difference:

ROFU's standard .75" bevel has been shortened to .65" so that the strike will retrofit into the most popular jamb preps!

HOLLOW METAL JAMB PREPARATION



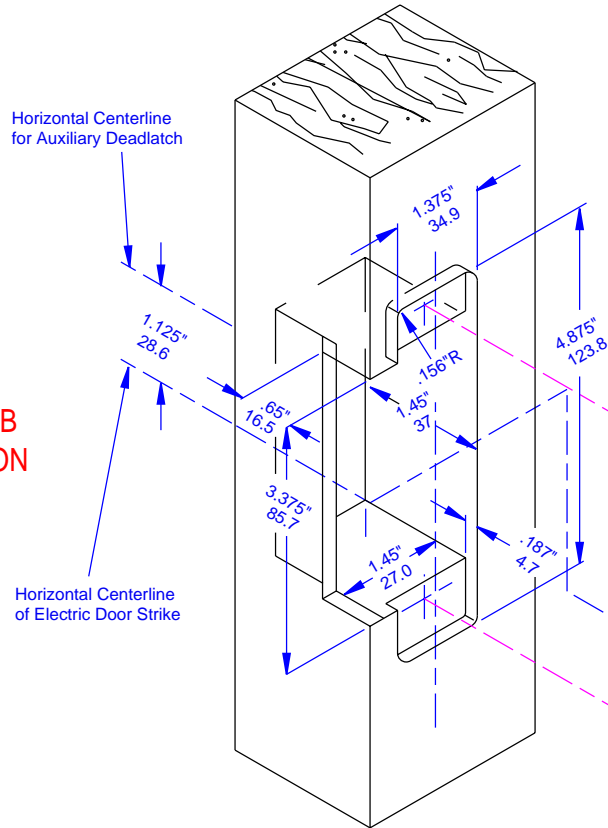
INSTALLATION



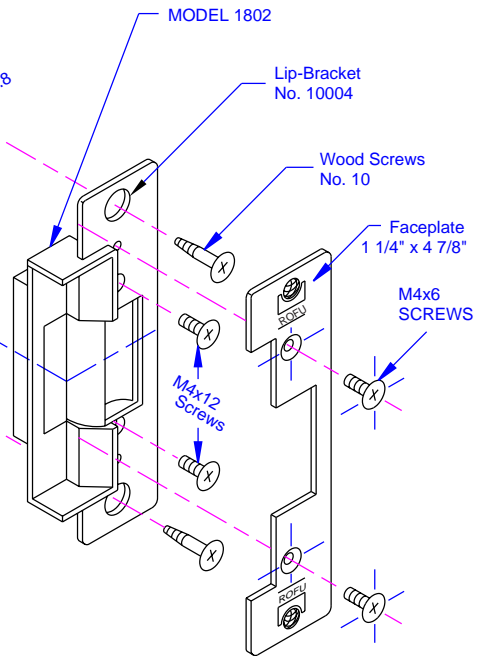
The mounting screws of the electric strike and the mounting screws of the deadlatch are located on the vertical centerline.



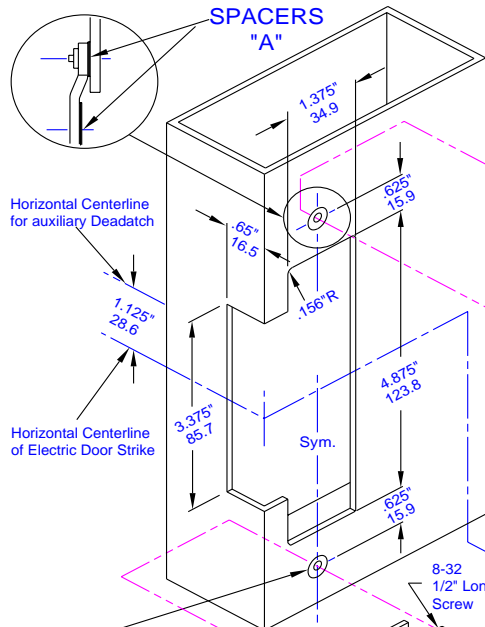
WOOD JAMB PREPARATION



INSTALLATION



ALUMINUM JAMB PREPARATION



INSTALLATION

