



ROFU® ELECTRIC STRIKE MODEL 1803



1803 - SERIES, FACEPLATE SIZE 1¼" x 6 7/8"

MODEL 1803 — Fail - Secure (Non Fail - Safe)

Electric strikes for use with mortise and cylindrical locksets.

For Commercial and Residential, New or Retrofit Uses

Standard Features



1803
Non-Handed

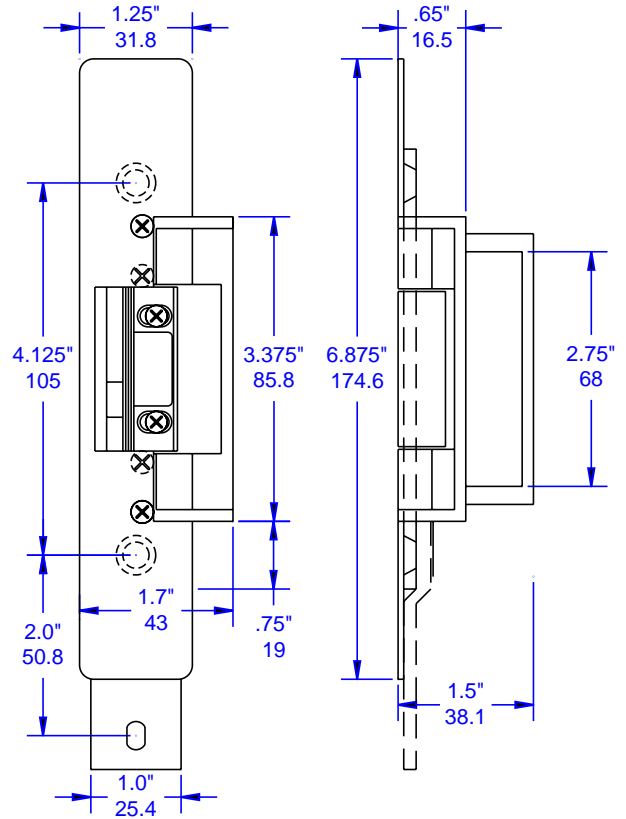
- **Retrofits into the most popular prep in the industry!**
- Anodized Aluminum ANSI size Faceplate
- Frame Type - Hollow Metal or Aluminum
- Tamper Strength Test - 1000 lbs (454kg)
- Cycle Test 500,000 cycles
- Keeper Depth - **1/2"** Maximum Latch Projection possible with 1/8" Door/Frame Clearance - **5/8"**
- Strike Depth 1.50" Overall
- Reversible - Non Handed
- Adjustable Keeper (FAFIX)
- Built-in MOV for Spike Suppression
- Limited Warranty - **36 Months**

Available in the following Voltages and Finishes:

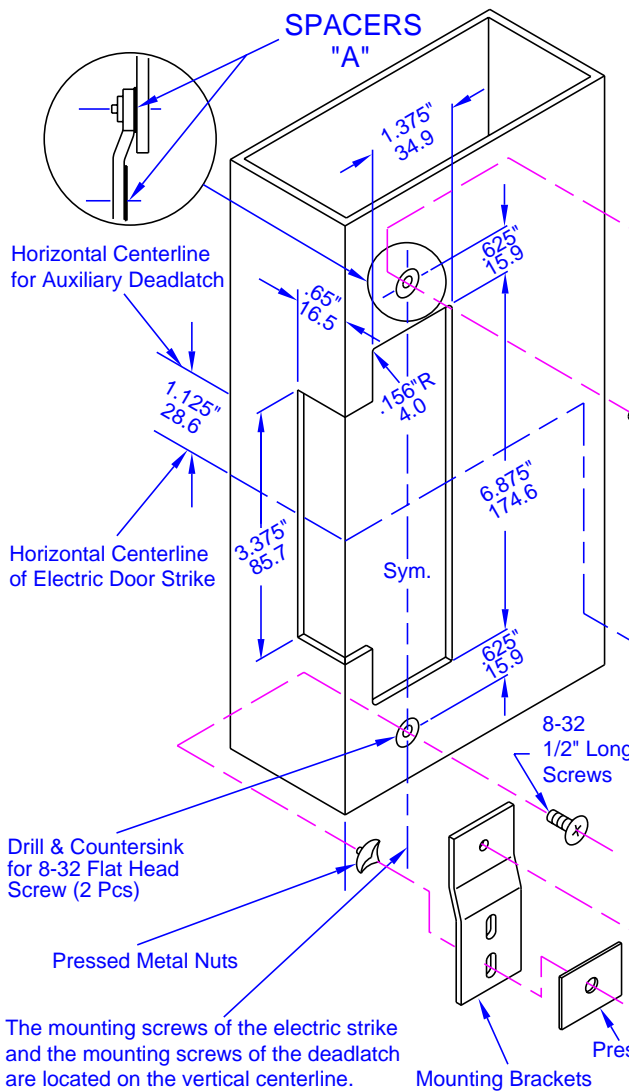
Specify Finish	xUS28 or xUS10B
Voltage, Fail Secure	x01=8-16VAC/3-6VDC (Intermittent Duty)
	x04=12VAC/12VDC (Intermittent Duty)
	x05=12VDC (Continuous Duty)
	x07=24VAC/24VDC (Intermittent Duty)
	x08=24VDC (Continuous Duty)



Line Art for 1803



ALUMINUM JAMB PREPARATION



INSTALLATION

