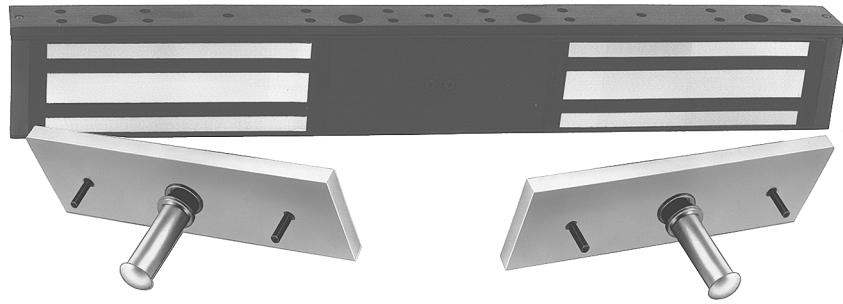




## ROFU<sup>®</sup> MAGNETIC DOOR LOCKING DEVICE MODEL 8022-002 FOR DOUBLE DOORS



### STANDARD FEATURES

- Holding Force: 1500 lbs. (675 Kg.) per side.
- Easy Installation: Versatile mounting bracket for new and existing doors and frames.
- Sensor: Built-in Hall effect crystal affected by door position, voltage input and magnetic field strength.
- LED: Red/Green LED door status indicator is attached to magnet housing.
- Fail Safe: Releases instantly when power is disconnected. No residual magnetism.
- Fail Alarm: May be released upon activation of fire alarm.
- Housing: Attractive, heavy duty, anodized extruded aluminum
- Voltage: 12VDC or 24VDC
- Current Draw: 415 mA at 12 VDC per block  
215 mA at 24 VDC per block
- Mounting hardware included with unit for outswinging doors. Optional Z-Brackets required for inswinging doors.
- Limited Lifetime Warranty

### SPECIFICATIONS

- Magnet Size: 21" x 2<sup>5</sup>/<sub>8</sub>" x 1<sup>5</sup>/<sub>8</sub>" (536 x 68 x 42 mm) (LxHxW)
- Armature Size: 7<sup>1</sup>/<sub>4</sub>" x 2<sup>3</sup>/<sub>8</sub>" x 5<sup>5</sup>/<sub>8</sub>" (190 x 60 x 16 mm) (LxHxW)
- Specify Finish: xUS28 or xUS40

### STANDARD MONITORING FEATURES

- Door Status and Power Switch — The magnet contains a built - in "C" Form contact 5 Amps @24V that is activated by power to the lock and contact between the armature plate and the surface of the lock. It indicates that the power is on and the door is closed. This feature can be used for remote door surveillance, indicator lights and interlocks.

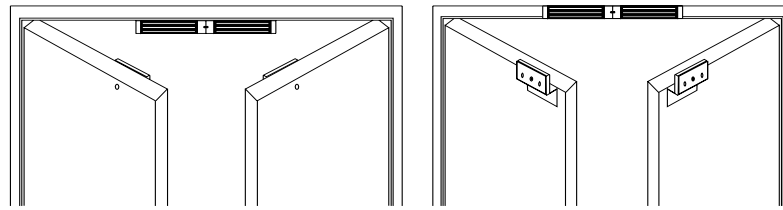
### OPTIONAL ACCESSORIES

- Accessories: Filler Plates, L-Brackets, Glass door mounting aids, Z-Brackets for inswinging doors & Spacers.

NOT TO SCALE - TECHNICAL DATA SUBJECT TO CHANGE WITHOUT NOTICE

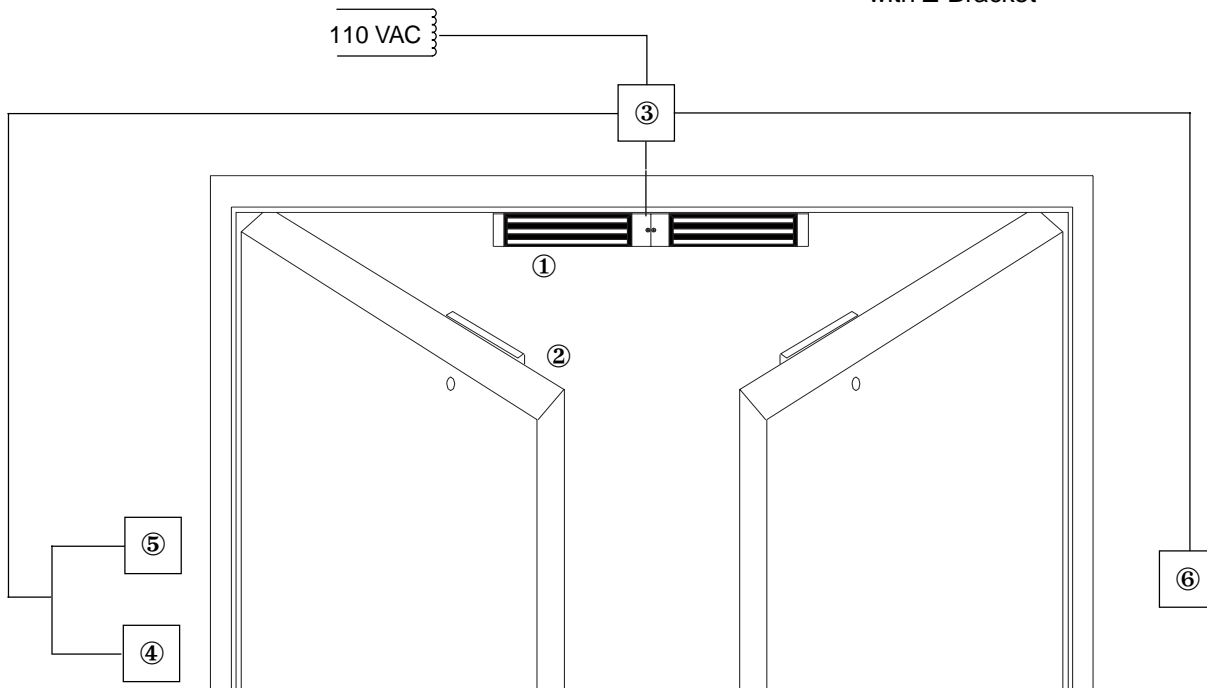


**TYPICAL INSTALLATION ROFU® MODEL 8022**



Outswinging doors

Inswinging doors with Z-Bracket

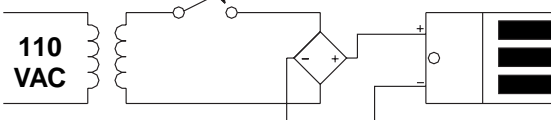


- 1 ROFU Magnet 8022 with door status and tamper switch.
- 2 Armature plate
- 3 DC power supply
- 4 Access Controls - key switch
- 5 Request to exit button
- 6 Remote release

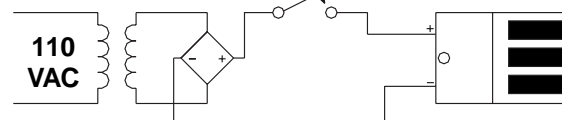
SWITCH OR SOLID STATE SWITCHING DEVICE

IMPORTANT: THE LOCAL ON/OFF SWITCH MUST BE WIRED BETWEEN DC SOURCE AND MAGNET

SWITCH OR SOLID STATE SWITCHING DEVICE



**WRONG**



**RIGHT**

NOT TO SCALE - TECHNICAL DATA SUBJECT TO CHANGE WITHOUT NOTICE