



Securitron Magnalock Corp.
550 Vista Boulevard
Sparks, NV 89434

Tel 775.355.5625
Fax 775.355.5633
info@securitron.com
www.securitron.com

ASSA ABLOY, the global leader
in door opening solutions

SECURITRON MODEL Z-32, Z-62, Z-82 BRACKET INSTALLATION INSTRUCTIONS

1. DESCRIPTION

Securitron's Z bracket is used for installation of an **"F" series Magnalock (face mounted)** on an inswinging door. Separate versions are available for the 32, 62 and 82 series Magnalocks. The mounting procedures are identical with only the dimensions of the lock and bracket changing. If the **suffix "M"** is found in the part number, the bracket is delivered with metric fasteners.

2. INSTALLATION OF THE Z BRACKET ON THE DOOR

The installation must be **planned before you start drilling**. The bracket must first be positioned on the door. Referring to the drawing on the opposite side, select a position that takes into account how the Magnalock must be positioned above the door. Note that the bracket cover is a little wider than the Magnalock which permits an attractive installation as the magnet and Z bracket are completely concealed by the cover. The vertical position of the bracket can vary on the door in case, for instance, the sex bolt head would interfere with the door stop. It is, of course, possible to lower the sex bolt location by drilling a lower hole in the bracket. Note also that the top part of the bracket is not pre-drilled to accept the strike as the vertical position of the strike on the bracket depends where the Magnalock can be mounted. There may be a header molding which must be cleared or in wall fastening considerations that affect Magnalock positioning. Indeed, the strike can be mounted so its top edge is higher than the bracket top. This is **why the bracket cover is open on the top**.

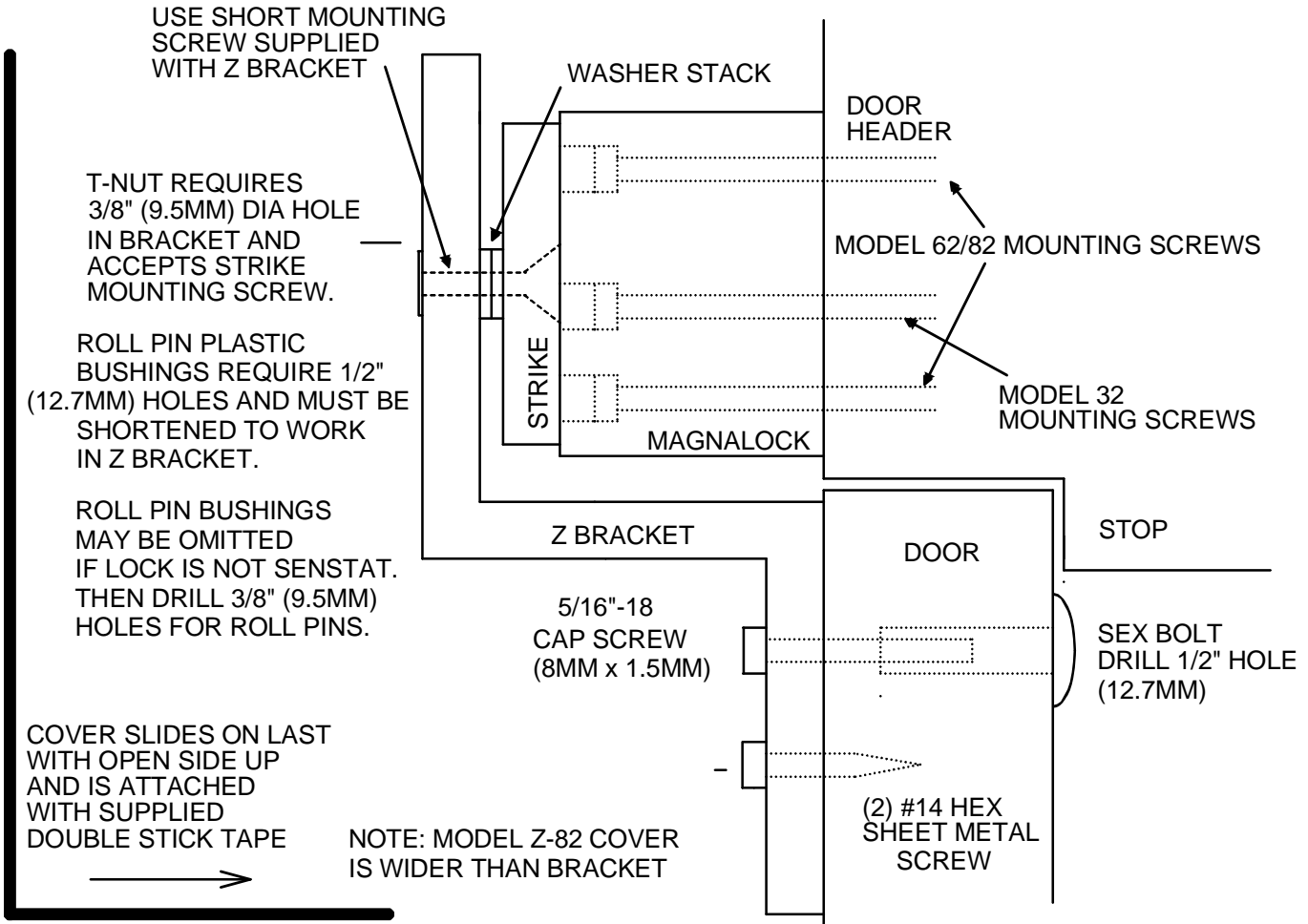
The Z bracket is then affixed to the door via the supplied hardware as shown in the drawing (it acts as its own template). Note that the real mounting strength of the bracket on the door comes from the cap screw into the sex bolt. The hex sheet metal screws are for anti-rotation. This fastener kit will function **equally well on wood or hollow metal doors**.

3. MOUNTING THE STRIKE PLATE TO THE Z BRACKET

Holes must be drilled in the Z bracket to mount the strike plate to it. The template furnished with the strike plate is appropriate for drilling these holes in the Z bracket. Note that the plastic bushings that surround the steel roll pins will protrude through the Z bracket making it impossible to mount the cover. They can be cut with a hacksaw or if the lock is not Senstat ("SC") they can be omitted (use the roll pins alone). In mounting the strike, use of 2 rubber washers will allow the strike to correctly meet the magnet face, assuming the door is parallel with the wall when it's closed. If this is not the case, some adjustment is built into the fasteners supplied. An extra rubber washer (a third one) comes with each Magnalock. A fourth one is supplied with the Z bracket. These rubber washers can space the strike farther from the bracket to compensate for a door that doesn't close flush with the header. Note also that 2 sets of roll pins are supplied. Use the 3/4" roll pins to attain correct spacing with 2 rubber washers. Use the 1" roll pins to attain correct spacing with 4 rubber washers. If greater adjustment is required, shims can be added either to the back of the Magnalock or to appropriate parts of the Z bracket.

The cover is then affixed to the Z bracket with the open side facing up and secured by the double stick tape. If a header molding strikes the cover interfering with the door closing, the cover may be mounted lower on the bracket.

Z BRACKET INSTALLATION



STRIKE MOUNTING DETAIL

