



Mortise Lock Installation Instructions 8800 Series (Knob, FL, RL and SL Trims) and YMM100 Series (FL and RL Trims)

*** REMOVING COVER SCREWS VOIDS LOCK BODY WARRANTY**

*** WHEN USING REFLECTIONS® TRIMS, BE SURE LOCK DESIGNATION INDICATES THE "RL" SUFFIX.**

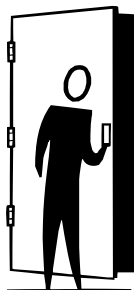
NOTES

The following is a step by step approach to installing a mortise lock and trim to both wood and steel doors.

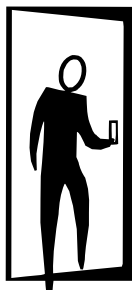
- | | |
|--|--|
| 1) Determine Hand of Door | 10) Install Escutcheon Plate Trim (Thru-bolted) |
| 2) Position Template and Mark Door | 11) Install Escutcheon Plate Trim (Surface Mounted) |
| 3) Drill Holes in Door | 12) Install Single Operating Trim (Sectional & Escutcheon) |
| 4) Mark Frame for Strike and Mortise Cavities | 13) Install Reflections® Sectional Trim |
| 5) Drill Mortise Cavities in Door and Frame | 14) Install Reflections® Escutcheon Trim |
| 6) 8800 and YMM100 Lock Handling Instructions | 15) Installing Thumb turn Assemblies |
| 7) Tools Necessary and Preparing Trim for Assembly | 16) Install Visual Occupancy Indicator |
| 8) Install Lock (Wood or H.M Door) | 17) Install Strike |
| 9) Install Sectional Trim | 18) Installation Trouble Shooting Tips |

1) Determine Hand of Door

- a. Face the door from the outside to determine its hand. Please note the outside is either the key side of an entrance door or the corridor side of a room door. The outside of a single communicating door is the side opposing the hinges. The outside of twin communicating doors is the space between the doors.



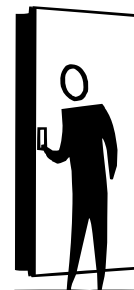
**Left Hand
Reverse:**
Hinges on
left, opens
outward. For
handed
locks, specify
LHR.



Left Hand:
Hinges on
left, opens
inward. For
handed locks,
specify LH.



Right Hand:
Hinges on right,
opens inward.
For handed
locks, specify
RH.



**Right Hand
Reverse:**
Hinges on right,
opens outward.
For handed
locks, specify
RHR.

2) Position Template and Mark Door

- Draw a horizontal centerline for the lock on both sides of door at desired height above finished floor line. Standard height for horizontal centerline is 39-15/16" above finished floor.
- Select template by comparing handing of door to Fig. 4, 5 and 6.
- Compare the lock function number being installed with (See Fig. 3) to determine the holes to be marked.
- Position the installation template on the door so that the horizontal centerline lines up with the horizontal line on the door. Mark the holes to be drilled using a scribe, center punch, or nail on the inside and outside of door. To avoid shifting of the template, it may be taped to the door during this step.
- On the edge of the door mark the holes to be drilled for the mortise cavity and armor front attaching screw holes.

3) Drill Holes in Door

- A. Bore marked lock trim holes (steps 2d and 2e). To avoid splintering wood, bore thru holes from both sides of door. For hole sizes refer to hole chart. Note: Hole "A" diameter is different for FL, RL & SL Applications.

Yale Commercial Locks & Hardware

100 Yale Avenue, Lenoir City, TN 37771 • Product Support Tel 800.438.1951 • Fax 800.338.0965 • www.yalecommercial.com

Yale® and Reflections® are registered trademarks of Yale Security Inc an ASSA ABLOY Group company. Other products' brand names may be trademarks or registered trademarks of their respective owners and are mentioned for reference purposes only. These materials are protected under U.S. copyright laws. All contents current at time of publication. Yale Security Inc. Reserves the right to change availability of any item in this catalog, its design, construction, and/or its materials. Copyright © 2004, 2008, Yale Security, Inc., An ASSA ABLOY Group company. All rights reserved. Reproduction in whole or in part without the express written permission of Yale Security, Inc., An ASSA ABLOY Group company is prohibited.

ASSA ABLOY is the global leader in door opening solutions, dedicated to satisfying end-user needs for security, safety and convenience.

4) Mark Frame for Strike Mortise Cavities

- a. Mark vertical position of strike on jamb using the reference centerline on installation template (see Fig. 4, 5 or 6) . Mark location of strike lip.(FIRST DETERMINE IF SILENCERS ARE TO BE USED) To locate horizontal centerline of strike, take half the door thickness PLUS the thickness of silencer (if used). Use this dimension to locate the strike centerline from the doorstop. (See Fig. 1)

5) Drill Mortise Cavities in Door and Frame

- a. Mortise door edge for lock body. Drill pilot holes for attaching screws.
- b. Slide lock body into cavity with armor front attached. Align armor front with top mark. Use lock front as template. Mark outline.
- c. Mortise door edge for lock front (7/32") deep.
- d. Mortise jamb for strike (3/32" deep). Be sure to mortise 1" (25mm) deep to accommodate lock bolts or strike box if used. (See Fig. 1)

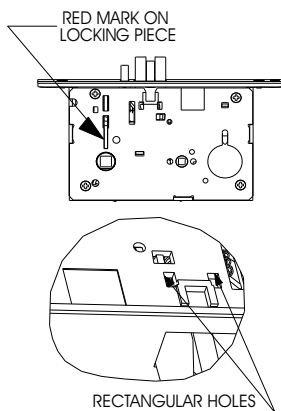
Note: Before installing lock, prepare door trim per sections 8,9,10 or 11.

6)

8800 Series Handing instructions

HANDING THE LATCHBOLT

1. Locate and depress spring plate mechanism in one of the rectangular holes.
2. While depressing spring plate pull latchbolt head.
3. Rotate head for desired handing .
4. Push head into lockbody until secured.
5. Operate several times to insure operation.



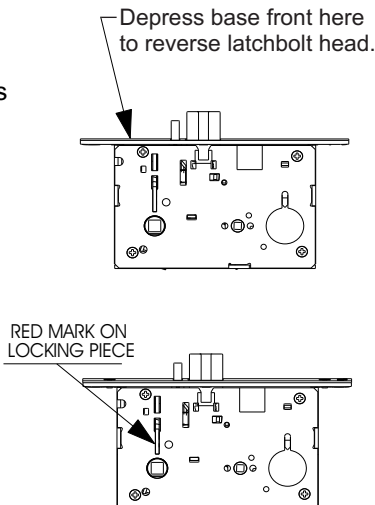
HANDING THE HUBS (LEVER OPERATION)

1. Locate RED MARK on locking piece.
2. Push Toggle Button slide away from "square spindle hole"
3. With blade screw driver push RED MARK on side nearest "square spindle hole"
4. RED MARK indicates Locked side!

YMM100 Series Handing instructions

HANDING THE LATCHBOLT

1. With armor front off, depress base front and rotate latchbolt head to desired handing.
2. Operate several times to insure operation.



HANDING THE HUBS (LEVER OPERATION)

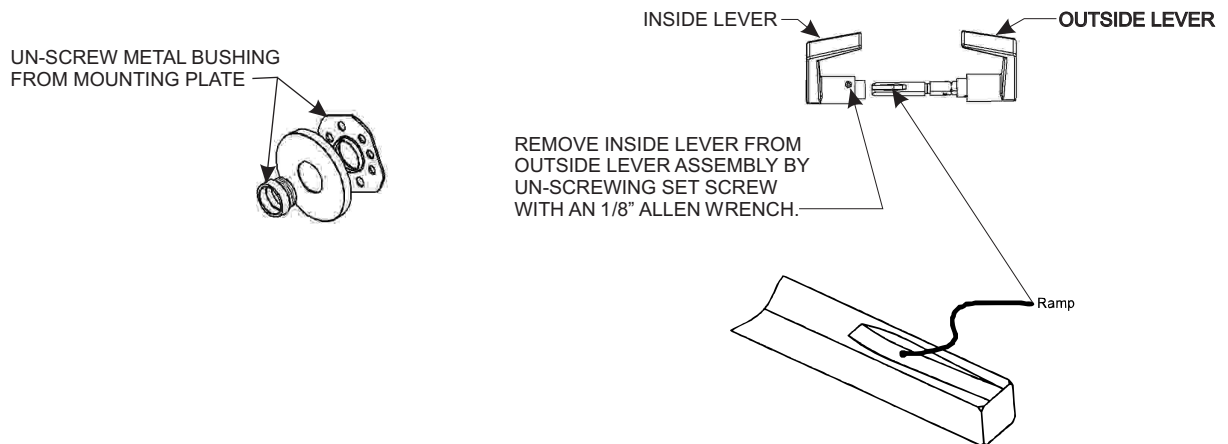
1. Locate RED MARK on locking piece.
2. Push Toggle Button slide away from "square spindle hole"
3. With blade screw driver push RED MARK on side nearest "square spindle hole"
4. RED MARK indicates Locked side!

7) Tools Necessary and Preparing Trim for Assembly

Tools necessary:

- A) Standard #2 Phillips Screw Driver
- B) Standard 1/8" Allen Wrench
- C) Wrench (flat stamping provided)

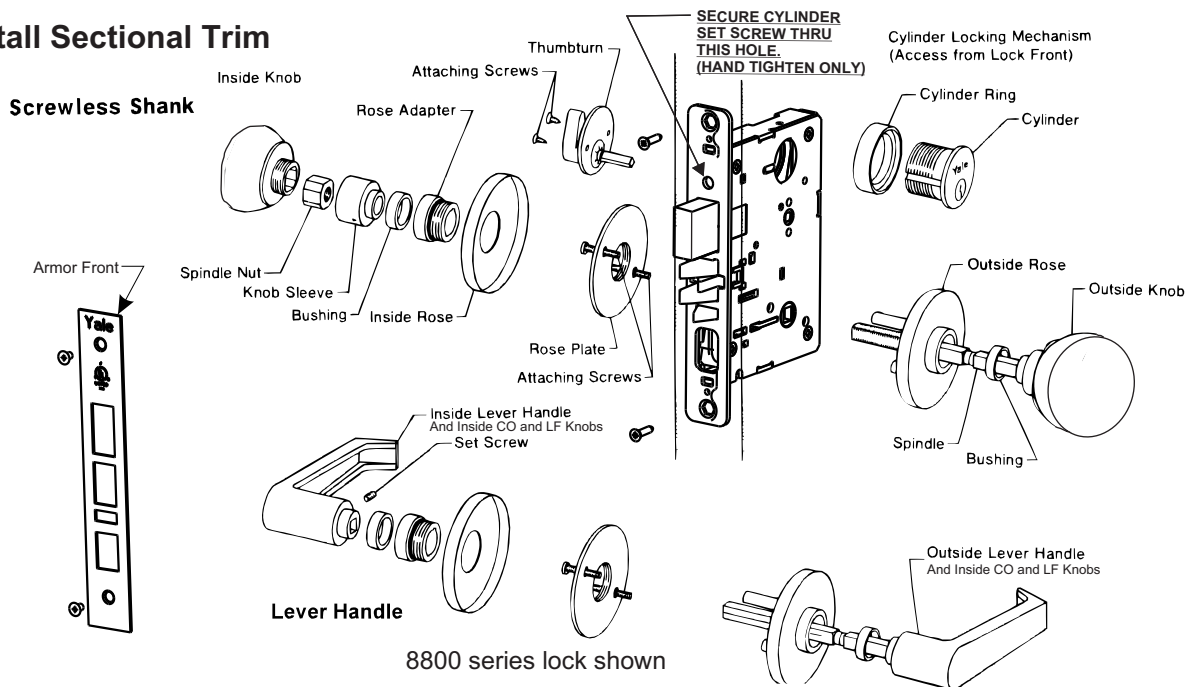
Warning: DO NOT TIGHTEN SCREWS WITH A BATTERY POWERED SCREWDRIVER, HAND TIGHTEN ALL SCREWS.



8) Install Lock (Wood or H.M. Door)

a. Insert lock body into cavity in door and secure base front with two #12 combination attaching screws. Make sure lock is positioned in cutout properly. See Fig. 3 Note: Installation may require leaving #12 combination screws loose until trim and cylinder are assembled in lock body.

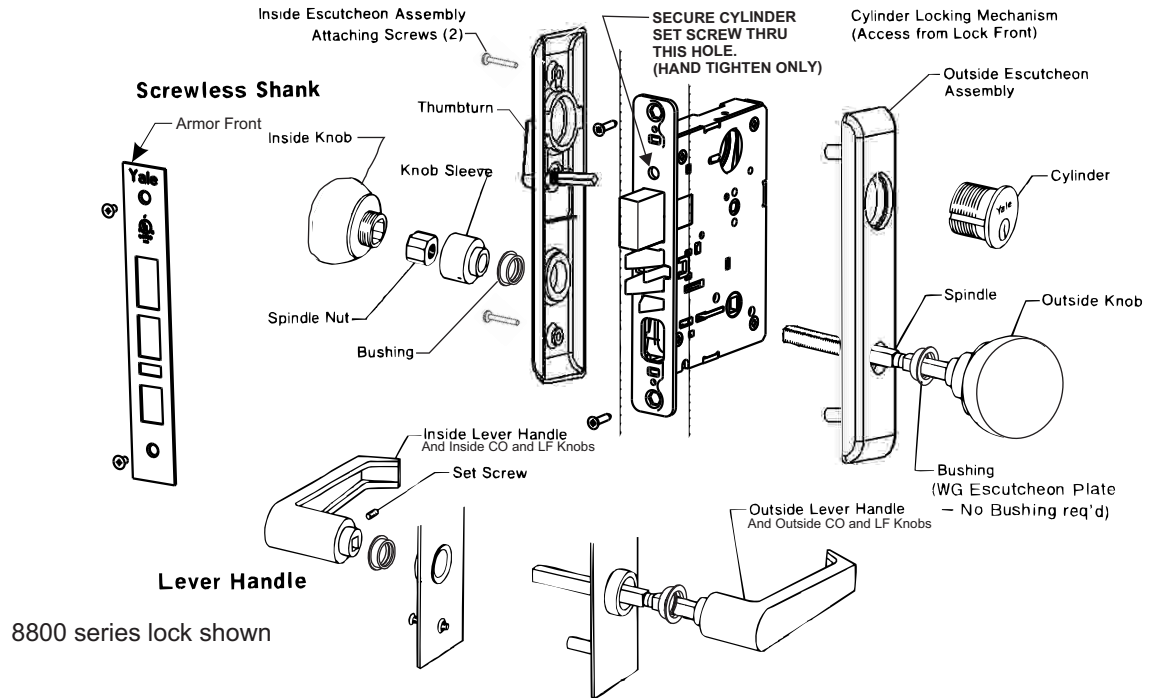
9) Install Sectional Trim



IMPORTANT NOTE:

Before mounting the Outside Lever Handle on the door back off the inside spindle (the spindle with ramp 1 turn from outside spindle). Be sure that the ramp aligns with set screw in Inside Lever Handle. This must be done to allow proper function of the lock body.

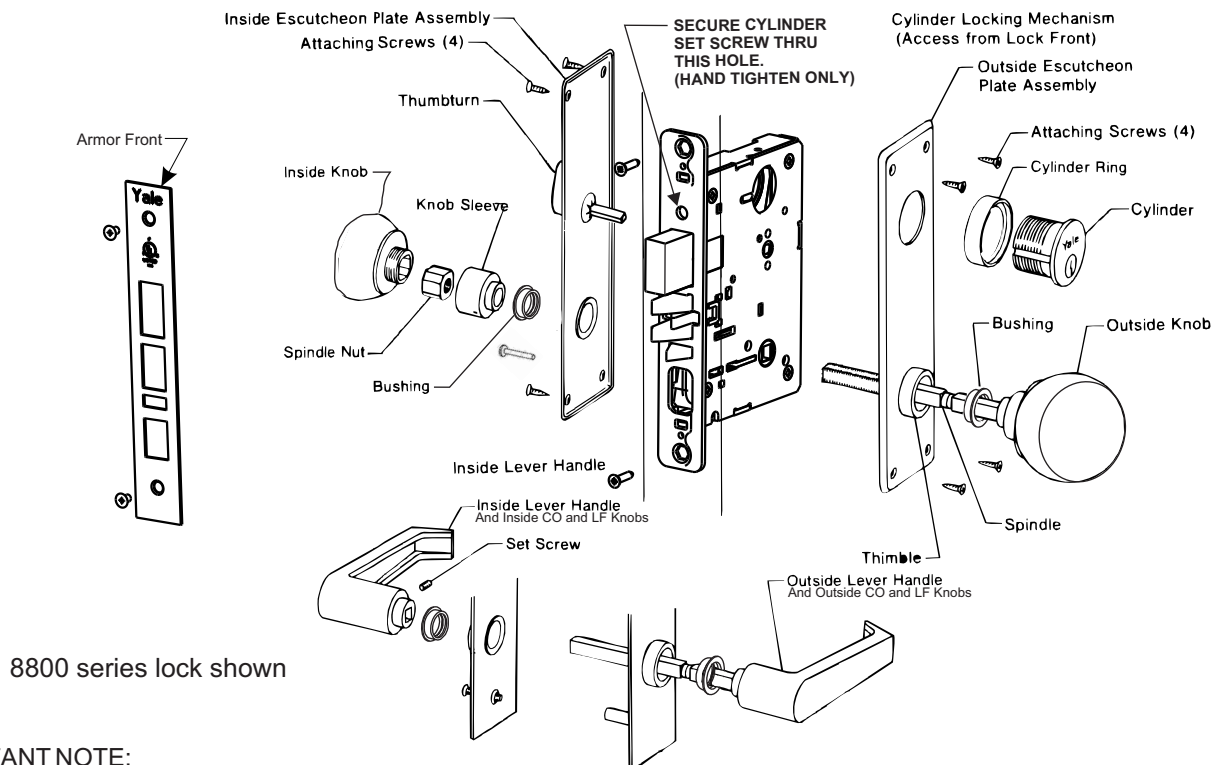
10) Escutcheon Plate Trim (Thru-Bolted)



IMPORTANT NOTE:

Before mounting the Outside Lever Handle on the door back off the inside spindle (the spindle with ramp 1 turn from outside spindle). Be sure that the ramp aligns with set screw in Inside Lever Handle. This must be done to allow proper function of the lock body.

11) Escutcheon Plate Trim (Surface Mounted)

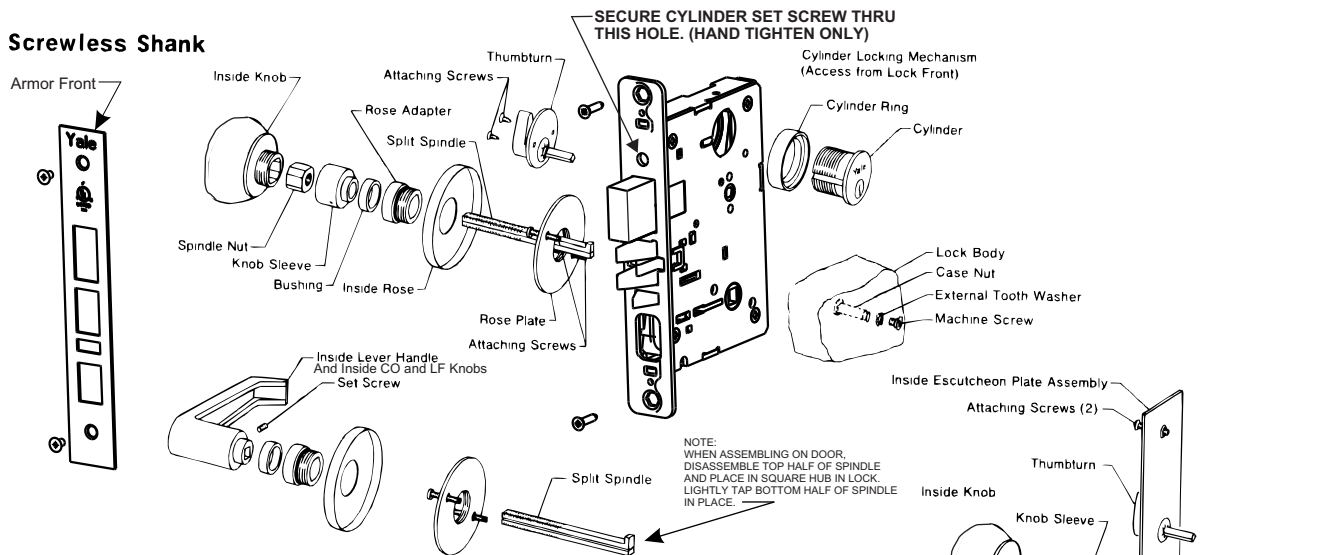


IMPORTANT NOTE:

Before mounting the Outside Lever Handle on the door back off the inside spindle (the spindle with ramp 1 turn from outside spindle). Be sure that the ramp aligns with set screw in Inside Lever Handle. This must be done to allow proper function of the lock body.

12) Install Single Operating Trim (Sectional and Escutcheon)

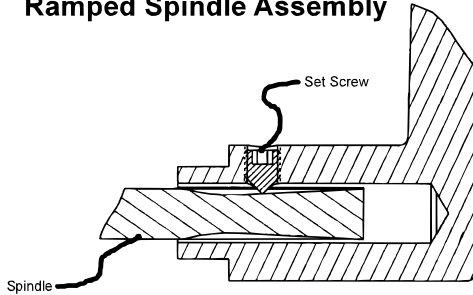
Screwless Shank



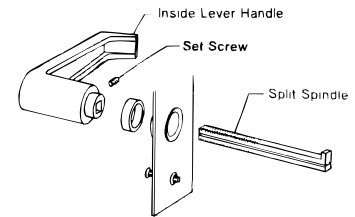
Lever Handle

8800 series lock shown

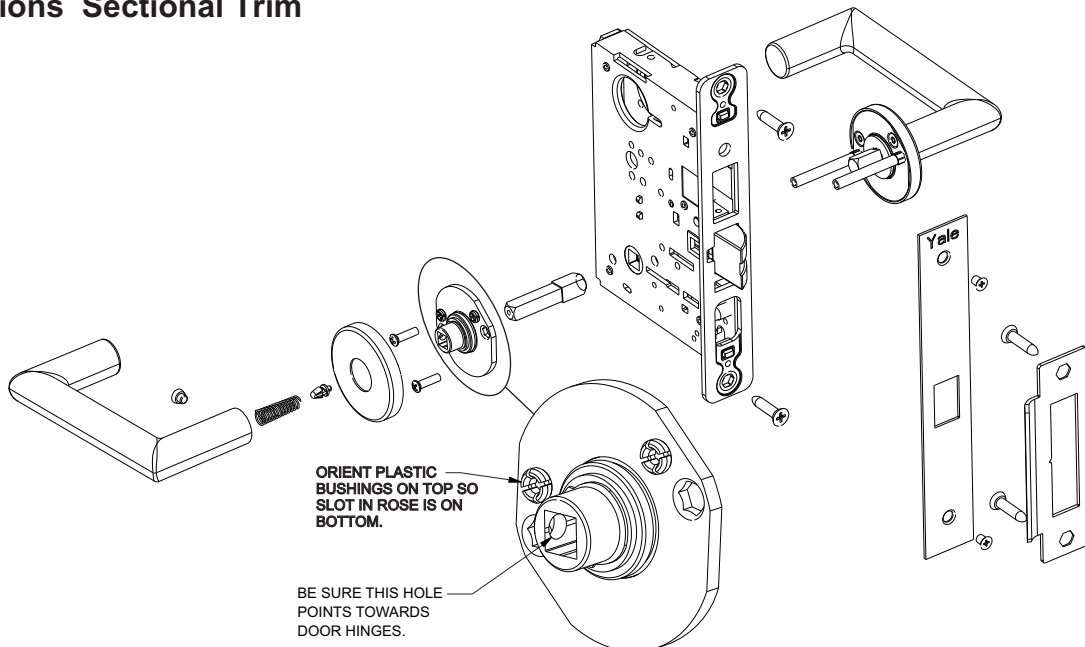
Ramped Spindle Assembly



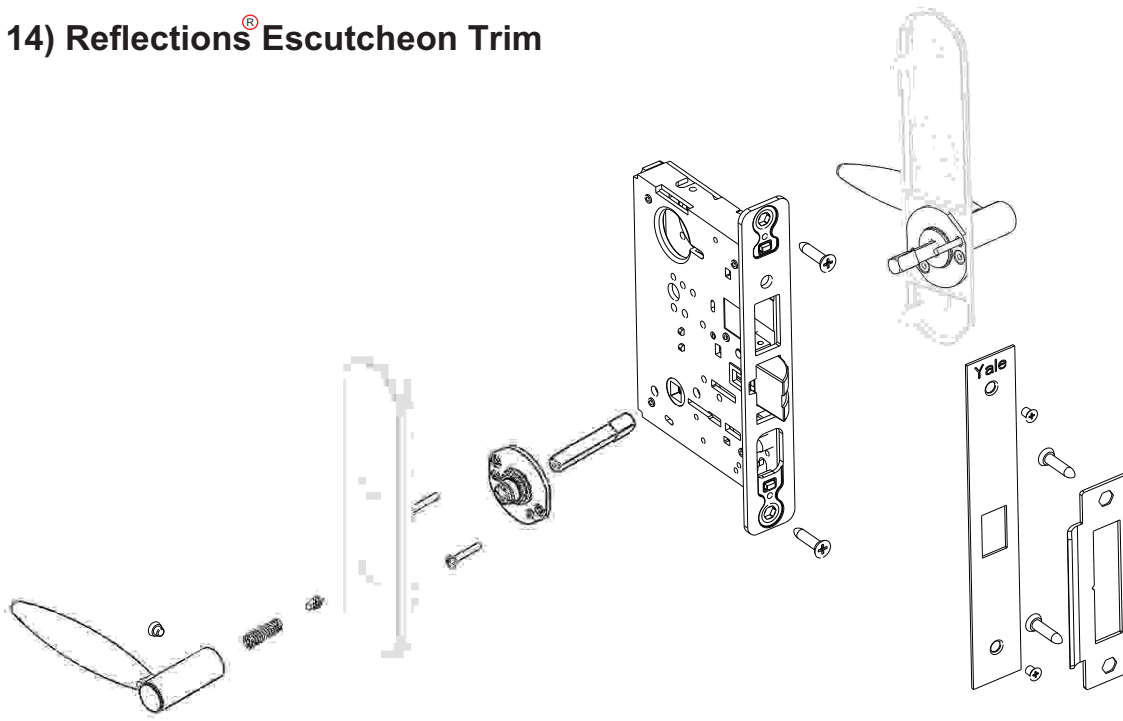
(WG Escutcheon Plate - No Bushing req'd)



13) Reflections® Sectional Trim



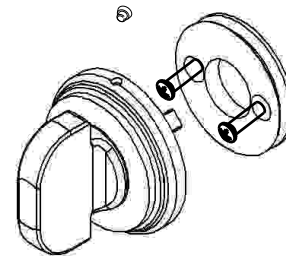
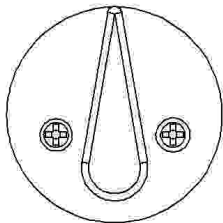
14) Reflections® Escutcheon Trim



15) Installing Thumbturn Assemblies

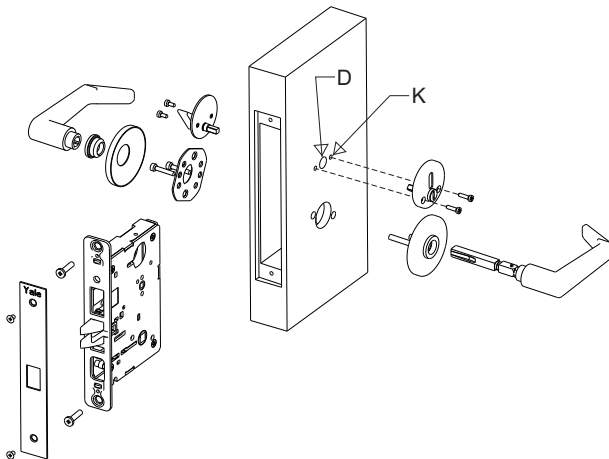
To install the Thumbturn Assembly on the door. First drill holes indicated for the function to be installed. Install the lockbody in the mortise pocket. Align the Thumbturn Shaft thru hole D and into the square hub in the lockbody. Position the thumbturn mounting plate so the attaching screw holes are horizontal to the floor. Mark the holes with a punch and remove thumbturn assembly. Drill the marked holes with a 1/16" Dia. drill bit. Re-install the thumbturn shaft in the square hole of lockbody. Install and tighten attaching screws.

Standard 8800 and YMM100 Series
Thumbturn Assembly



Reflections®
Thumbturn Assembly
and
Coin Turn Assembly
SEE TEMPLATE FOR
HOLE LOCATION

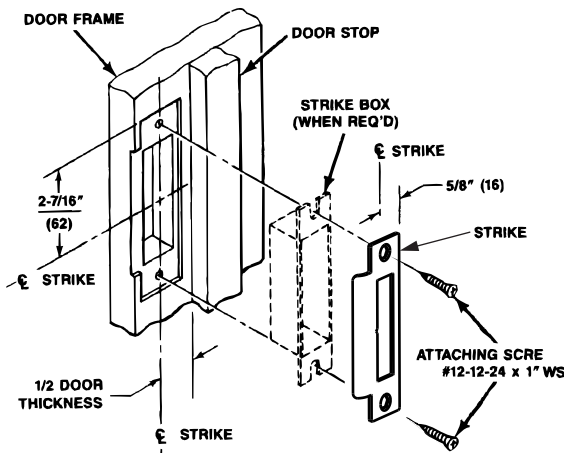
16) Visual Occupancy Indicator



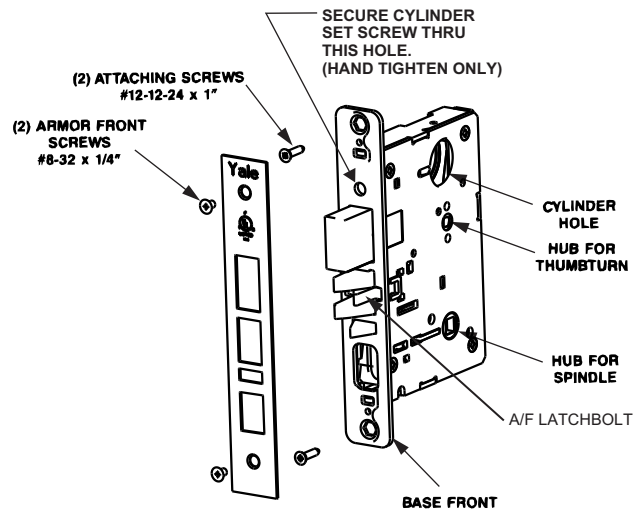
To install the Visual Occupancy Indicator on the outside of the door drill holes D and K. It is best to drill hole D first, then install lock and trim and drill the 2 (K) holes while indicator is in position.

17) Install Strike

a. Attach strike to jamb using two #12 combination attaching screws. (See Fig. 1)



(Fig. 1) 8800 Series Strike Shown



(Fig. 2) 8800 Series Lock Shown

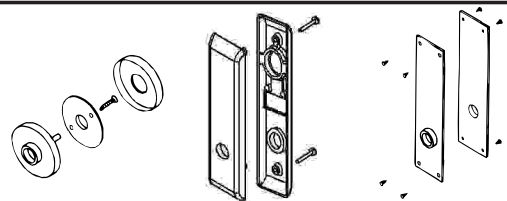
18) Installation Trouble Shooting Tips

Problem	Possible Cause	Solution
Difficult to operate Lock by lever or by Key.	Loose Trim (H.M. Doors) (Vibration caused by normal operation of door opening and closing can loosen attaching screws)	Adjust and Tighten - as necessary. If screws continually loosen up use a screw locking compound (such as Loctite) on all attaching screws.
	Door is warped or sagging, binding up latch bolt in strike cutout.	Check to see where latch is hanging up in strike. If door is sagging, tightening top hinge screws may solve problem. Hole in strike plate may have to be filed to relieve bind. Doors can warp when weather changes: warm inside - cold outside cool inside - hot outside (Exterior doors painted a dark color are particularly susceptible to warpage when exposed to direct sunlight.) It may take a few seasonal changes to work out all binding problems.
Loose Trim (wood doors)	Wood doors after being installed will sometimes shrink slightly as the building dries out.	Tighten all screws as needed.
Latch bolt hangs up in lock body.	Foreign object in lock body (metal shavings, saw dust, wood particles, mineral core etc.)	Remove lock from door and remove foreign object from body.* Lubricate if necessary.
	Lock body lacks lubrication or lubrication has gummed up with age.	Use penetrating or solvent type lubricant as a cleaning agent to loosen frozen or sticking components. Lubricate with silicone base or Lithium Grease.
Cylinder Jams up.	Dirt or other foreign object may be in keyway affecting operation.	Lubricate cylinder with graphite or other non-oily lubricant (such as Lock-EZE) Do not use oil based lubricants in keyway.

* Please note: Disassembling lock body will void warranty.

Hole Chart			
	Size		Used for
Hole	H.M. Door	Wood Door	
A	FL RL	1-1/8 Dia. (29)	Knobs And Lever
	SL	1-1/2 Dia. (48)	
B	1-1/4 Dia. (32)	1-1/4 Dia. (32)	Cylinder
C	3/4 Dia. (19)	3/4 Dia. (19)	Thumbturn or Emergency Key
D	3/4 Dia. (19)	3/4 Dia. (19)	Hotel Indicator and Visual Occupancy Indicator
E	5/16 Dia. (8)	5/16 Dia. (8)	Rose Thru-Bolts
F	See page 6 section 15 for details.		
G	1/2 Dia. (13)	1/2 Dia. (13)	Escutcheon Plate Thru-Bolts
H	.116 Dia. (2.9) #32 Drill	1/16 Dia. (1.6)	Surface Escutcheon Plate Attaching
J	.152 Dia. (3.9) #24 Drill	11/64x1Dp. (4.4x25) C'bore 1/2x1/8 Dp. (13x3)	Surface Escutcheon Plate Attaching Screws
K	.116 Dia. (2.9) #32 Drill	1/16 Dia. (1.6)	REFLECTIONS® THUMBTURN & COIN TURN ASSEMBLIES

Note:
When installing lock functions
with thumbturn see step 15 for
hole placement.

HOLE CHART							
YMM100 LOCK FUNCTION	8800 LOCK FUNCTION (KNOB, FL, *RL and SL)	SECTION TRIM		THRU-BOLTED ESC.		SURFACE ESC.	
		OUTSIDE	INSIDE	OUTSIDE	INSIDE	OUTSIDE	INSIDE
YMM101FL	8801 8870DT 8871DT 8872DT 8880 8881 8884 8885 836A&B 838A&B	A,E	A,E	A,G	A,G	A,H	A,H
YMM102FL	8802 8865	A,C,E,F	A,C,E,F	A,C,G	A,C,G	A,C,H	A,C,H
YMM105FL YMM107FL YMM108FL	8805 8807 8808 8824 8831	A,B,E	A,E	A,B,G	A,G	A,B,H	A,H
	8890 8891	A,B*,E	A,B*,E	A,B*,G	A,B*,G	A,B*,H	A,B*,H
YMM108-2FL YMM112-2FL YMM117-2FL YMM160-2FL	8808-2 8811-2 8812-2 8817-2 8818-2 8830-2 8860-2 8894-2 8895-2 8896-2 8897-2 8898-2 8899-2	A,B,E	A,B,E	A,B,G	A,B,G	A,B,H	A,B,H
	8820 8827	A,B,D,E	A,C,E,F	A,B,D,G	A,C,G	A,B,D,H	A,C,H
YMM122FL YMM147FL YMM160FL	8809 8822 8832 8847 8860 8861 8867 8896 8897 8898 8899	A,B,E	A,C,E,F	A,B,G	A,C,G	A,B,H	A,C,H
	8813ST 8815	B ONLY	C,F	-	-	-	
YMM128FL	8828	NONE	A,E	NONE	A,J**	NONE	A,H
	8833	B ONLY	A,E	B ONLY	A,J**	B ONLY	A,H
	8823 8829	A,B,E	NONE	B ONLY	A,B,J,**	B ONLY	A,B,H
	8813ST-2	B ONLY	C,F,B	-	-	-	-
	8814	B ONLY		-	-	-	-
	8814-2 8833-2	B ONLY	B ONLY	-	-	-	-
YMM162FL	8835 8862	A,E,***	A,C,E,F	A,G,***	A,C,G	-	-
	8834 8834-2	B	A,B,E	B,G	A,B,G	B,H	A,B,H
	8864	A,B,C,E	A,C,E,F	A,B,C,G	A,C,G	A,B,C,H	A,C,H

(Fig. 3)

CAUTION: Office copiers, printers and facsimile machines may change the size of a drawing and make the template inaccurate to use as a door marker.

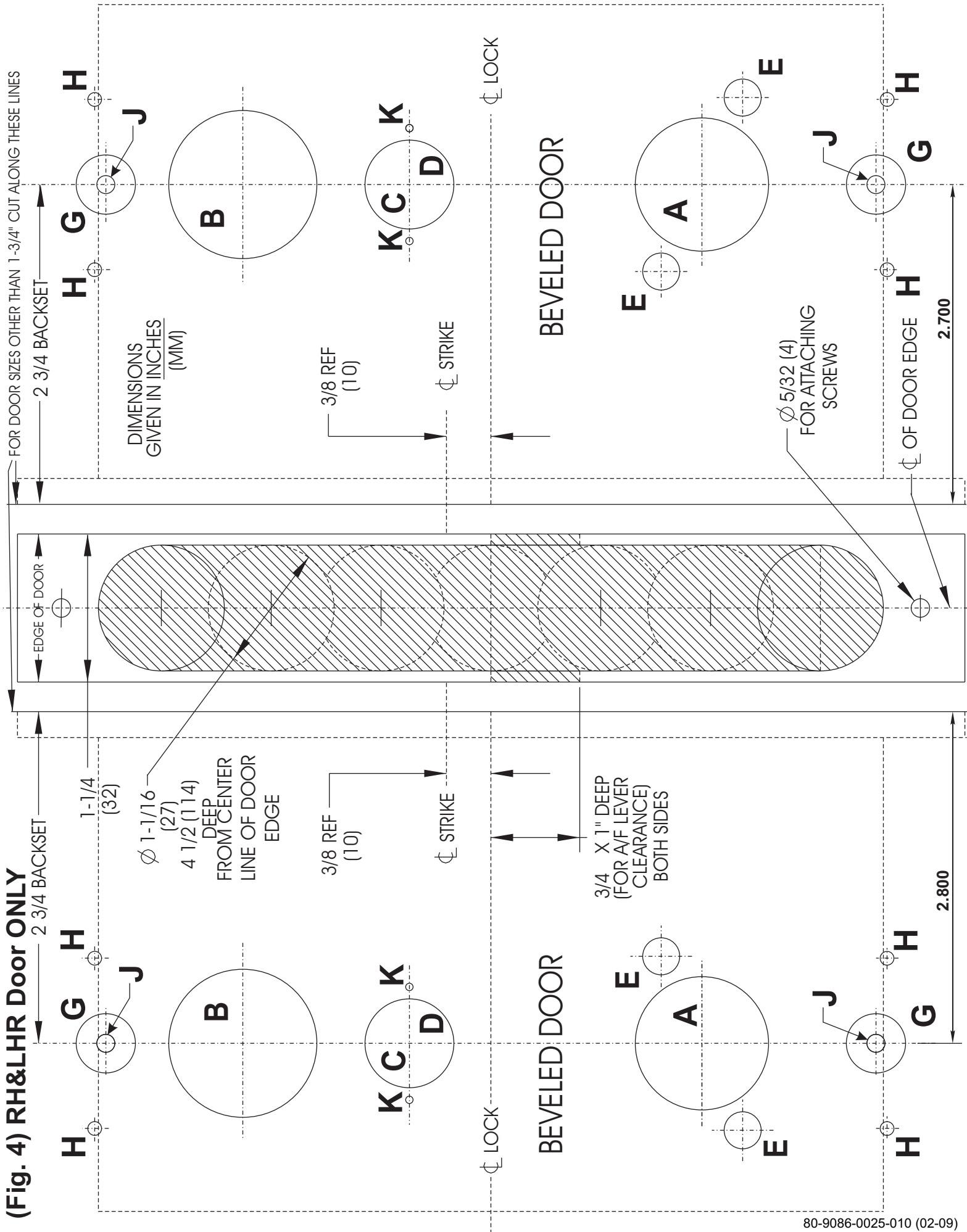
Yale Commercial Locks & Hardware

100 Yale Avenue, Lenoir City, TN 37771 • Product Support Tel 800.438.1951 • Fax 800.338.0965 • www.yalecommercial.com

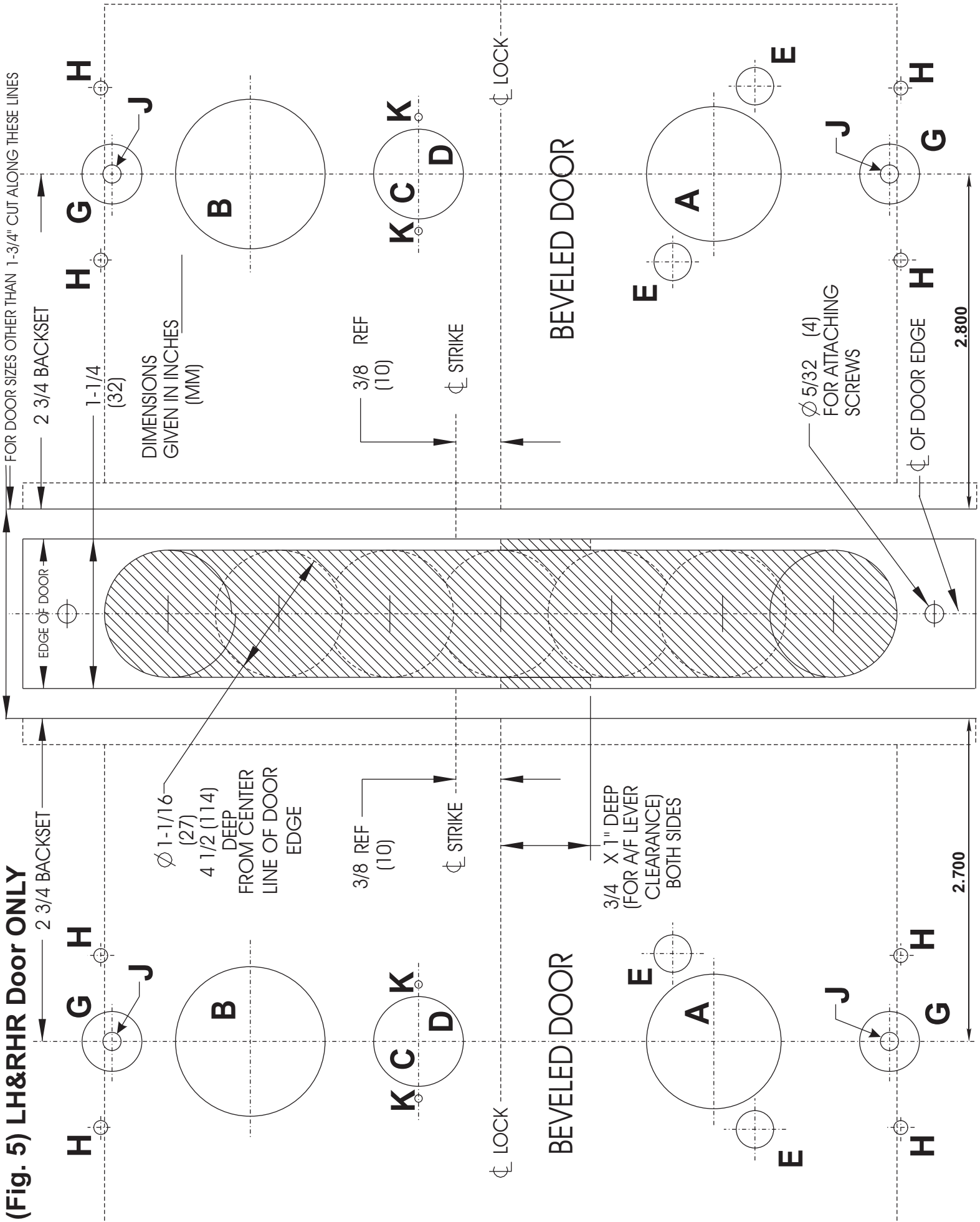
Yale® and Reflections® are registered trademarks of Yale Security Inc an ASSA ABLOY Group company. Other products' brand names may be trademarks or registered trademarks of their respective owners and are mentioned for reference purposes only. These materials are protected under U.S. copyright laws. All contents current at time of publication. Yale Security Inc. Reserves the right to change availability of any item in this catalog, its design, construction, and/or its materials. Copyright © 2004, 2008, Yale Security, Inc, An ASSA ABLOY Group company. All rights reserved. Reproduction in whole or in part without the express written permission of Yale Security, Inc, An ASSA ABLOY Group company is prohibited.

ASSA ABLOY is the global leader in door opening solutions, dedicated to satisfying end-user needs for security, safety and convenience.

(Fig. 4) RH&LHR Door ONLY



(Fig. 5) LH&RHR Door ONLY



(Fig. 6) Non-Beveled Door.

