



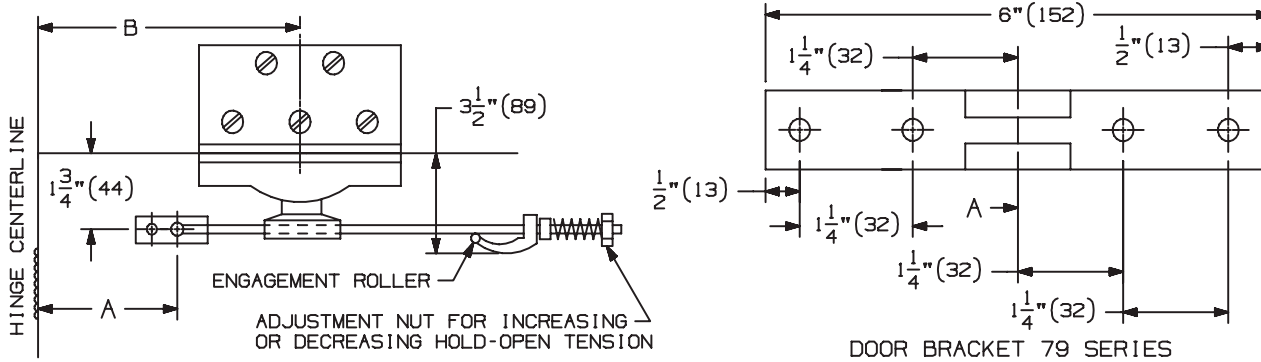
INST.79J

Surface Overhead Holder Angle Bracket (Push Side)

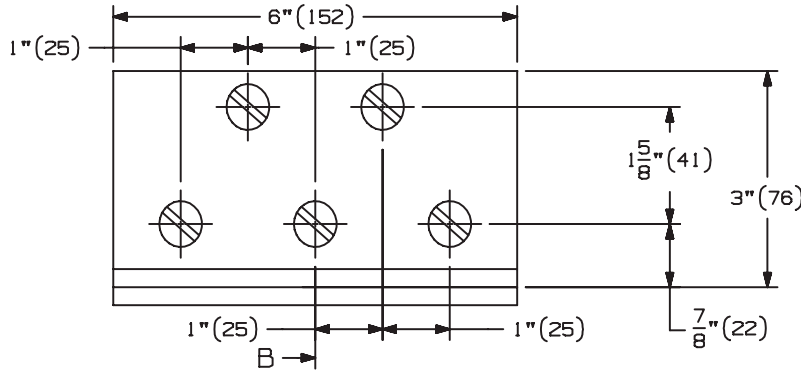
Installation Instructions

OVERHEAD HOLDERS OR STOPS MUST BE INSTALLED BEFORE CLOSERS.

- 1. A. FOLLOW STEP 1 FROM THE 79 SERIES SURFACE OVERHEAD HOLDER INSTALLATION TEMPLATE INST.79.



- 2. A. LOCATE "B" DIMENSION ON THE FACE OF THE FRAME OR ON THE FLUSH TRANSOM PANEL. NOTE THAT THE "B" DIMENSION IS MEASURED FROM THE CENTERLINE OF THE HINGE AS SHOWN.
- B. FOR METAL FRAMES, USE A F DRILL AND 5/16"-18 TAP IN 5 PLACES. FOR WOOD FRAMES, DRILL 1/4" PILOT HOLES IN 5 PLACES. MOUNTING HOLES SHOULD BE PREPARED IN THE FIELD.



- 3. A. FOLLOW STEP 3 FROM THE 79 SERIES OVERHEAD SURFACE HOLDER INSTALLATION TEMPLATE INST.79
- 4. A. INSTALL ANGLE BRACKET ONTO STANDARD JAMB BRACKET WITH 5/16"-18 X 1/2" FPHMS PROVIDED WITH THE ANGLE BRACKET.
- B. INSTALL THE DOOR BRACKET ON THE DOOR.
- C. INSTALL THE ANGLE BRACKET TO THE FACE OF THE FRAME OR THE FLUSH TRANSOM PANEL.

SCREW DETAILS

	QTY	WOOD	METAL
ANGLE	4	5/16"-18 X 1/2" FPHMS	5/16"-18 X 1/2" FPHMS
JAMB	4	#18 X 2" FPHSMS	5/16"-18 X 1 1/2" FPHMS
DOOR	4	5/16"-18 X 2 1/2" PPHMS	5/16"-18 X 2 1/2" PPHMS
DOOR	4	5/16"-18 HEX CAP NUT	5/16"-18 HEX CAP NUT
DOOR	4	FLAT WASHER	FLAT WASHER
DOOR	3	SPLIT LOCK WASHER	SPLIT LOCK WASHER



INST.79J

Customer Service
 1-877-671-7011 www.allegion.com/us

