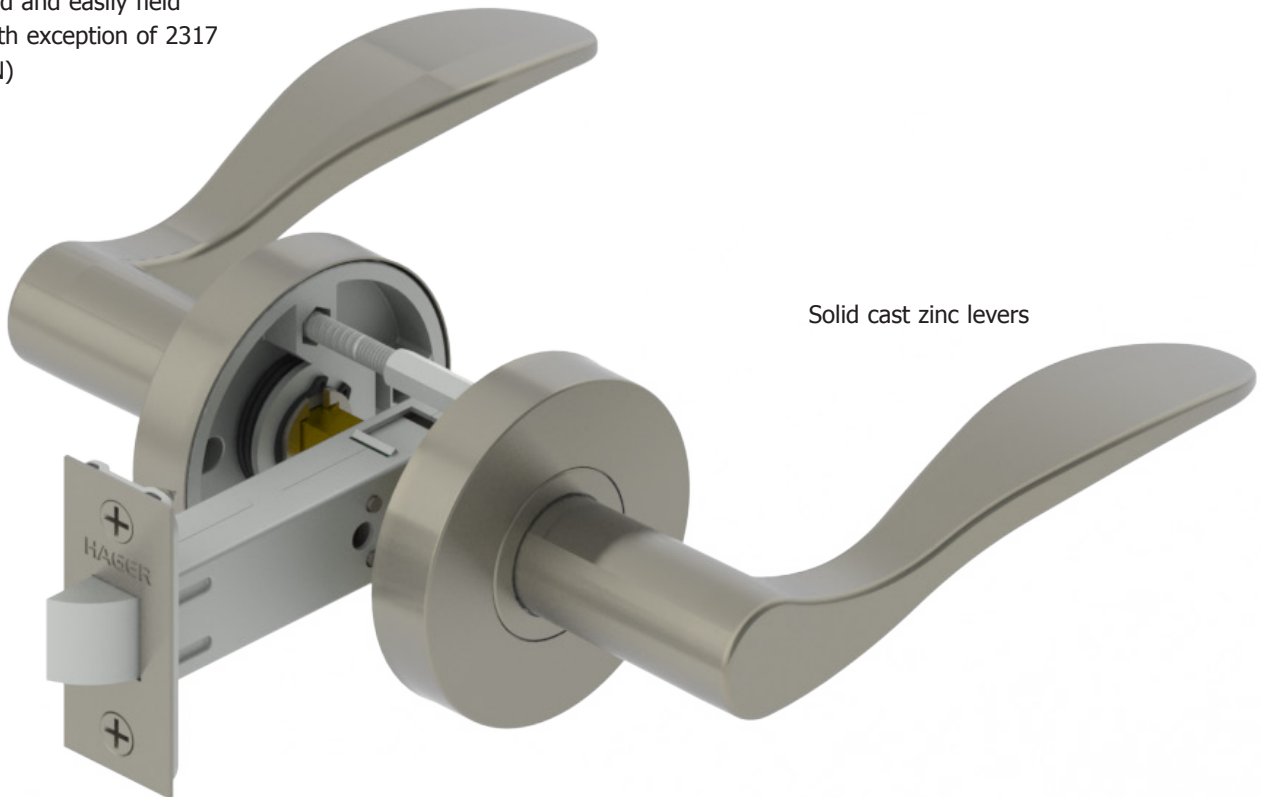


2300 Series



Hager 2300 Series tubular lockset provides the necessary security and dependability for applications where there is a need for interior functions requiring a residential look and feel. It is well suited for light duty residential interior applications such as multi-family housing. It is offered in many of the popular designs that are seen throughout the industry today.

ADA compliant lever designs -
all non-handed and easily field
reversible (with exception of 2317
JHN and WRN)



Solid cast zinc levers

1" wide square and round
corner faceplate come
standard

Latchbolt available in both
2-3/8" and 2-3/4" (60 mm
and 70 mm) backset



LOCKS

HOW TO ORDER

2310

2³/₄"

US15

US26D

CHA

ASA

Function

- 10 - Passage, Closet Latch/Single Locking
- 17 - Single Dummy Trim
- 40 - Privacy, Bedroom, Bath Lock

Backset/Faceplate

- 2-3/4" (70 mm)
- 2-3/8" (60 mm)

Finish

- US3
- US4
- US15
- US10B
- US26
- US26D

Interior Finish

(if different)

Lever Style

- CHA - Charles Lever
- JHN - Johnston Lever
- JOS - Joshua Lever
- LOU - Louis Lever
- WRN - Warren Lever

Strike




- ASA
- TEE
- FLRC and FULL (Default)

Product Group

- Tubular, DECO

Note:
Finishes other than US10B, US15, and US26D are subject to longer lead times.

2300 SERIES FUNCTION CHART

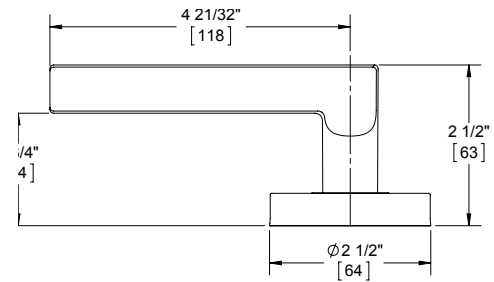
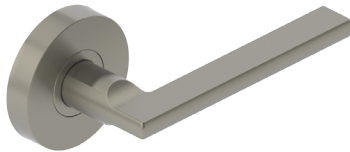
Function	Function No.	Function Description	ANSI No.	
Non-Keyed				
	Passage	10	Latchbolt operated by lever from either side at all times.	-
	Dummy	17	Pull one side, no mechanical operation.	-
	Privacy	40	Latchbolt operated by lever from either side. Outside lever is locked by push button and unlocked by emergency release outside or operating inside lever.	-



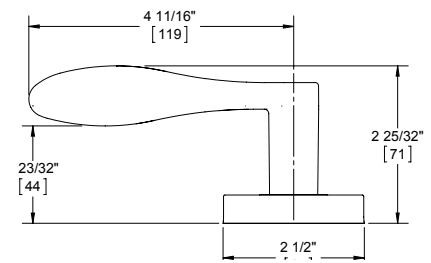
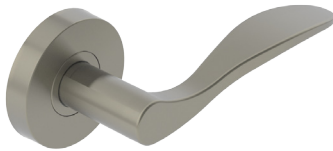


2300 SERIES SECTIONAL LEVER OPTIONS

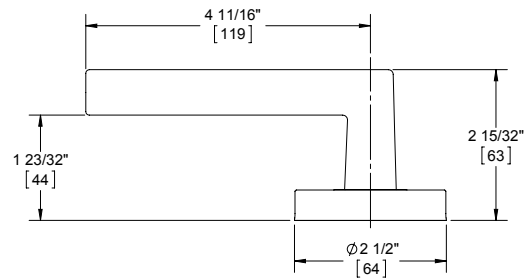
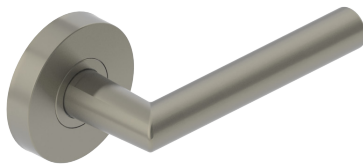
CHARLES LEVER



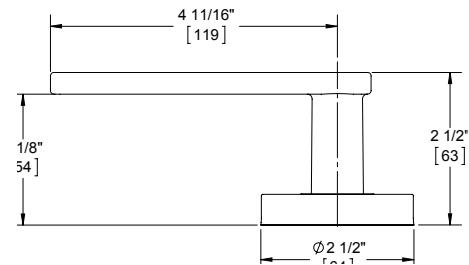
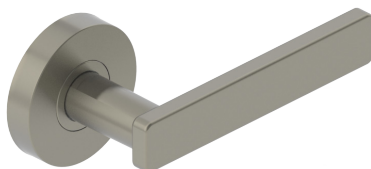
JOHNSTON LEVER



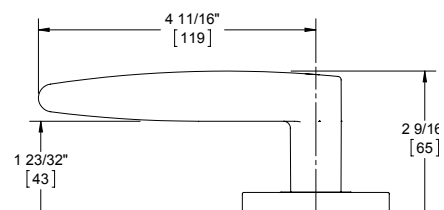
JOSHUA LEVER



LOUIS LEVER

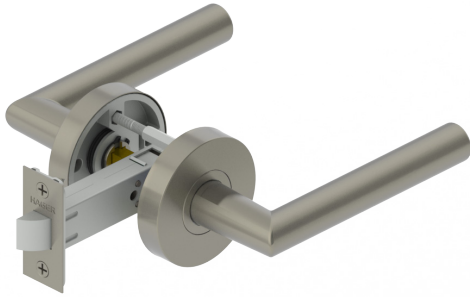


WARREN LEVER





LOCKS



2300 Series **Deco Tubular** **Light Duty Residential**

- **Five-year warranty**
- **No exposed mounting screws**
- **Non-handed (exception of 2317 functions for JHN and WRN)**

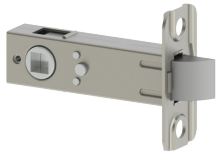
- Exposed Trim:
- Levers: Solid Cast Zinc (4.69" / 119 mm length)
 - Rose: Stainless Steel (2.5" / 63.5 mm diameter)
- Installation:
- Template provided
 - Includes Thru-bolts
- Door Thickness:
- 1-3/8" - 1-3/4" (35 mm - 45 mm)
- Latchbolt:
- 7/16" (11 mm) throw
 - 1" x 2-1/4" (25 mm x 57 mm) faceplate
 - Square and round corner faceplates come standard
- Strike:
- Square and round corner full lip strikes come standard
- Door Handing:
- Non-handed (except for Johnston and Warren, 17 Functions)
- Functions:
- 40 Privacy
 - 10 Passage
 - 17 Dummy
- Finishes:
- US3, US4, US10B, US15, US26, US26D
- Lever Options:
- Charles, Johnston, Josuha, Louis, and Warren
- Options:
- Split finish available





2300 SERIES LATCHBOLTS

2-3/4" Backset Spring Latches



2-639-7608

Privacy Latch

- Square and round corner standard
- 1" x 2-1/4" (25 mm x 57 mm) faceplate
- For use with privacy functions



2-639-7607

Passage Latch

- Square and round corner standard
- 1" x 2-1/4" (25 mm x 57 mm) faceplate
- For use with privacy functions

2-3/8" Backset Spring Latches



2-639-7610

Privacy Latch

- Square and round corner standard
- 1" x 2-1/4" (25 mm x 57 mm) faceplate
- For use with privacy functions



2-639-7609

Passage Latch

- Square and round corner standard
- 1" x 2-1/4" (25 mm x 57 mm) faceplate
- For use with privacy functions

2300 SERIES ADDITIONAL STRIKES



3933

T-Strike with Plastic Dust Box

1-1/8" x 2-3/4" (29 mm x 70 mm)
Dust box included



3935

Standard ASA Strike Plate

1-1/4" x 4-7/8" (32 mm x 124 mm)



3959

Faceplate Adapter

Converts 1" (25 mm) to 1-1/8" (28 mm) width

