

Table Of Contents

	page
Floor Stops	
FS13 Floor Stop.....	E2
R14 Riser	E2
FS17 Floor Stop.....	E2
FS436 Floor Stop.....	E3
FS438 Floor Stop.....	E3
R435 Riser	E3
R437 Riser	E3
FS439 Floor Stop.....	E4
FS410 Floor Stop	E4
FS18, FS18L Floor Stop	E5
FS434 Floor Stop.....	E5
430 Floor Stop	E5
FS441, FS441WS Floor Stop	E6
FS444, FS448 Floor Stop.....	E6
Floor Stop & Holder	
FS9 Floor Stop & Semi-automatic Holder.....	E7
FS40, FS41, FS42, FS43 Floor Stop & Automatic Holder.....	E7
FS446, FS450 Floor Stop & Manual Holder	E8
FS495, FS496, FS497 Floor Stop & Automatic Holder	E8
Wall Bumpers/Stops	
WS11, WS11X Wall Stop	E9
WS20, WS20X Manual Wall Holder.....	E9
WS33, WS33X Wall Stop	E10
WS65 Wall Stop.....	E10
WS401, WS402 Wall Bumper.....	E11
WS404 Wall Bumper	E11
WS406, WS407 Wall Bumper	E12
411R Wall Bumper	E13
WS443, WS447 Wall Stop.....	E14
WS445, WS449 Manual Wall Holder	E14
Wall Holders	
WS40 Automatic Wall Holder	E15
WS45, WS45X Automatic Wall Holder	E15
Kick Down Holder	
FS452 Kick Down Holder	E16
FS455 Kick Down Holder	E16
FS544, FS555 Kick Down Holder.....	E17
Plunger Door Holders	
FS1153.....	E18
FS1154.....	E18
Roller Bumpers	
RB470, RB471, RB472 Roller Bumper.....	E19
Residential Door stops	
060, 061 Flexible Door Stop	E20
60, 61 Door Base Stop	E20
63 Flexible Door Stop.....	E21
64 Door Base Stop	E21
Hinge Pin Stops	
69.....	E21
70	E22
72Z Residential Door Saver	E22
73Z Commercial Door Saver	E22
Silencers	
SR64, SR65, SR66 Door Silencer.....	E23



A Hinges & Pivots
 B Pulls & Plates
 C Flush Bolts & Coordinators
 D Latches, Catches & Bolts
E1 Stops
 F Exterior Hardware
 G Miscellaneous Hardware



Meets ANSI/BHMA 156.6, L12141.

FS13 Dome Stop

- Standard FS13 for use where no threshold is used.
- Heavy-Duty Cast Dome Stops constructed of brass.
- Unique riser design of R14 (below) allows easy conversion to threshold application.
- Units are packed with fasteners sufficient for mounting in all types of floor construction, including concrete.
- Replaceable grey rubber bumper.

Dimensions

Overall Height: 1"
 Base Height: 5/32"
 Base Diameter: 1-3/4"

Finishes

Ives Number	US3	US4	US10	US10B	US26	US26D
BHMA	605	606	612	613	625	626

R14 Dome Stop Rise

- Adapts the FS13 Dome Stop to threshold use.
- Brass Die Cast Construction.

Dimensions

Riser Height: 5/16"
 Base Diameter: 1-3/4" round

Finishes

Ives Number	US3	US4	US10	US10B	US26	US26D
BHMA	605	606	612	613	625	626



Meets ANSI/BHMA 156.6, L12161.

FS17 Dome Stop

- One piece dome stop for use with thresholds.
- Heavy-Duty Cast Dome Stops constructed of brass.
- Units are packed with fasteners sufficient for mounting in all types of floor construction, including concrete.
- Replaceable grey rubber bumper.

Dimensions

Overall Height: 1-11/32"
 Base Height: 1/2"
 Base Diameter: 1-3/4" round

Finishes

Ives Number	US3	US4	US10	US10B	US26	US26D
BHMA	605	606	612	613	625	626

A
Hinges & Pivots

B
Pulls & Plates

C
Flush Bolts & Coordinators

D
Latches, Catches & Bolts

E2
Stops

F
Exterior Hardware

G
Miscellaneous Hardware



FS436
Meets ANSI/BHMA 156.16, L12141 for brass or bronze and L32141 for aluminum.



FS438
Meets ANSI/BHMA 156.16, L12141 for brass or bronze and L32141 for aluminum.

FS436 Dome Stop
FS438 Dome Stop

- FS436 for doors without threshold.
 - FS438 for doors with threshold or undercut doors.
 - Heavy-Duty Cast Dome Stops constructed of brass, bronze or aluminum.
 - Packed with wood screw and plastic anchor.
- Replaceable gray, non-marring rubber bumper.

Dimensions

FS436

Overall Height: 1"
Base Height: 3/16"
Base Diameter: 1-3/4" x 2" Oval

FS438

Overall Height: 1-3/8"
Base Height: 9/16"
Base Diameter: 1-3/4" x 2" Oval

Finishes brass

Ives Number	US3	US4	US5	US10	US10B	US15	US26	US26D	B716
BHMA	605	606	609	612	613	619	625	626	

Finishes aluminum

Ives Number	US28
BHMA	628

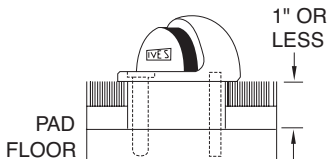
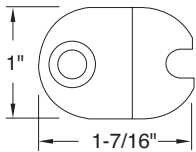


R435 Riser for FS436 Dome Stop
R437 Riser for FS438 Dome Stop

- Extruded aluminum, mill finish.
- R435 for conversion of FS436 Dome Stop to carpet installation.
- R437 For conversion of FS438 Dome Stop to carpet installation.
- Packed with wood screws, lead shield and stud. Specify Tampin (TPN) if required.

Dimensions

Available in 1/4", 3/8", 1/2", 5/8", 3/4" and 1" height.



A
Hinges & Pivots

B
Pulls & Plates

C
Flush Bolts & Coordinators

D
Latches, Catches & Bolts

E3
Stops

F
Exterior Hardware

G
Miscellaneous Hardware

A
Hinges & Pivots



FS439 Universal Dome Floor Stop

- High or Low-Rise Mount
- Zinc or Stainless Steel
- Spring-loaded Rubber Contact
- Replaceable Rubber Bumper

B
Pulls & Plates

C
Flush Bolts & Coordinators



Dimensions

Overall Height: 1-1/2"
Pad Height: 1-1/8"
Base Height: 1/4"
Base Diameter: 1-7/8"

Finishes

Ives Number	US3	US4	US10B	US26D	US32D
BHMA	677	678	704	682	630

D
Latches, Catches & Bolts

FS410 Decorative Floor Stop

- Non-directional
- Cast Brass Construction
- Replaceable Rubber Bumper

Dimensions

Overall Height: 1-1/2"
Bumper Thickness: 1/4"
Diameter: 1-1/4"

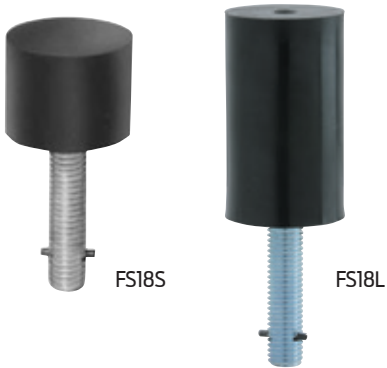
Finishes

Ives Number	US3	US26D
BHMA	605	626

E4
Stops

F
Exterior Hardware

G
Miscellaneous Hardware



**FS18S
FS18L Floor Stops**

- Security Door Stops designed for use in high vandalism areas.
- Molded from black flame resistant, resilient material around a heavy-duty stud.
- Once grouted in concrete, leaves no exposed fasteners to be tampered with or removed.
- Ideal for jail or security cell areas where floor mounted stops are required.
- FS18L also ideal for concrete wall applications.

Dimensions

FS18S Height: 1-1/2" FS18L Height: 3-1/2"
 FS18S Diameter: 2" FS18L Diameter: 2"
 FS18S Stud Length: 2-1/2" FS18L Stud Length: 2-1/2"

FS434 Floor Stop

- Burnished wrought steel.
- For undercut doors up to 1-1/2".
- Packed with screws and plastic anchors.
- Replaceable soft, resilient gray rubber.



Dimensions

Overall Height: 2-5/8"
 Base Size: 1-1/2" W x 2-3/4" L

Finishes

Ives Number	USC
BHMA	604

430 Floor Door Stop

- Burnished wrought steel.
- For undercut doors up to 1-1/2".
- Packed with screws and plastic anchors.
- Replaceable soft, resilient gray rubber.



Dimensions

Overall Height: 1-5/16"
 Base Diameter: 1-1/4"

Finishes brass

Ives Number	B3	B4	B5	B10B	B15	B26	B26D
BHMA	605	606	609	613	619	625	626

Finishes aluminum

Ives Number	A3*	A5	A14	A92
BHMA	666		669	673

* only available in Slim-Pak of 25

A
Hinges & Pivots

B
Pulls & Plates

C
Flush Bolts & Coordinators

D
Latches, Catches & Bolts

E5
Stops

F
Exterior Hardware

G
Miscellaneous Hardware



Meets ANSI/BHMA 156.16, L12131 for brass

FS441 Floor Stop

- Accommodates door undercut up to 1-1/2".
- Designed to blend well with all types of construction and provide a minimum of hindrance to cleaning efforts.
- Heavy-Duty cast brass or aluminum construction.
- Replaceable Non-marring rubber bumper.

FS441 packed with expansion shield and tampion for masonry type mounting, and wood screws for drywall mounting.

Dimensions

Overall Height: 2-1/8"

Overall Length: 2-7/8"

Base Depth: 1-5/8"

Finishes *brass*

Ives Number	US3	US4	US5	US10	US10B	US15	US26	US26D
BHMA	605	606	609	612	613	619	625	626



FS444
Meets ANSI/BHMA 156.16, L12131 for brass

FS448
Meets ANSI/BHMA 156.16,
L12121 for brass and L32121 for aluminum

FS444 Floor Stop

FS448 Floor Stop

- Ideal for interior or exterior use.
- Cast brass construction.
- Accommodates door undercut up to 2-1/2".
- Replaceable Non-marring rubber tip.

FS444 is packed with expansion shield and lead shield, for masonry type mounting.
FS448 is packed with wood screws, for drywall mounting.

Dimensions

Overall Height: 3"

Base Diameter: 2-1/2"

Finishes *brass*

Ives Number	US3	US4	US5*	US10	US10B	US15	US26	US26D
BHMA	605	606	609	612	613	619	625	626

Finishes *aluminum*

Ives Number US28*

BHMA 628

* not available on FS444

A
Hinges & Pivots

B
Pulls & Plates

C
Flush Bolts & Coordinators

D
Latches, Catches & Bolts

E6
Stops

F
Exterior Hardware

G
Miscellaneous Hardware



Meets ANSI/BHMA 156.16, L11241.

FS9 Floor Stop & Semi-Automatic Holder

- Semi-automatic floor-mounted holders accommodates with door to floor clearance of 1-1/2" or less.
- Cast from heavy-duty brass.
- Activate holder by flipping the engagement tongue forward. When door is opened, the hook (mounted on door) engages the tongue. To release, push firmly on door to disengage tongue.
- Universal screw pack accommodates all types of floor and door construction.

Dimensions

Overall Height: 3-1/2"
Base Dimensions: 2" wide x 3-1/2" long

Finishes

Ives Number	US3	US4	US10	US10B	US26	US26D
BHMA	605	606	612	613	625	626



Meets ANSI/BHMA 156.16, L11301

FS40 Floor Stop & Automatic Holder FS41 FS42 FS43

- Automatic door holders ideal for heavy-traffic situations that require a simple, fool-proof, Hold-Open device.
- Forged from brass.
- Unit is activated automatically when door is opened. A firm pull on door releases the mechanism.
- Strikes accommodate different door to floor clearances.
- Model numbers are determined by strike/door-to-floor clearances.
- Holder position on door is adjustable.
- Universal screw pack allows for installation in all types of door construction.

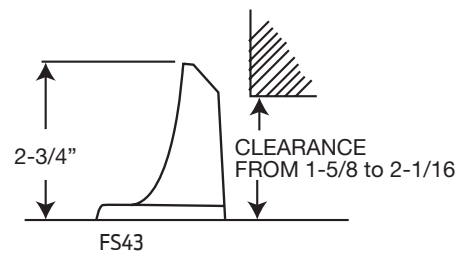
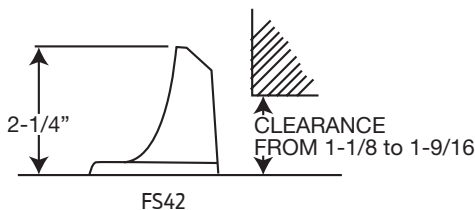
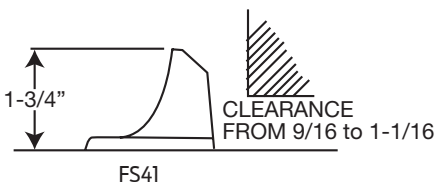
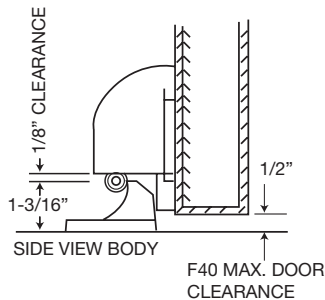
Dimensions

Door to Floor Clearance:	FS40	FS41	FS42	FS43
	1/2" or less	9/16" to 1-1/16"	1-1/8" to 1-9/16"	1-5/8" to 2-1/16"

Holder Dimensions: 3" Wide x 3-11/16" High

Finishes *brass*

Ives Number	US3	US4	US10	US10B	US26	US26D
BHMA	605	606	612	613	625	626





FS446
Meets ANSI/BHMA 156.16, L11371 for brass and L31371 for aluminum.

FS450
Meets ANSI/BHMA 156.16, L11361 for brass and L31371 for aluminum.

FS446 Floor Stop & Manual Door Holder

FS450 Floor Stop & Manual Door Holder

- Manual type floor holder ideal for interior or exterior use.
- Cast brass or aluminum construction.
- Accommodates door undercut up to 2-1/2".
- Replaceable non-marring rubber tip.
- Unit functions as a stop but serves as a Hold-Open device when hook is manually engaged in strike. Unit requires manual disengagement to release Hold-Open.

FS446 packed with expansion shield and lead shield, for masonry type mounting

FS450 packed with 3 wood screws, for drywall mounting.

Dimensions

Overall Height: 3-3/4"

Height from Floor to Stop Center Line: 2-5/8"

Stop Diameter: 1-1/16"

Base Diameter: 2-1/12"

Finishes *brass*

Ives Number	US3	US4	US10	US10B	US15	US26	US26D
BHMA	605	606	612	613	619	625	626

Finishes *aluminum*

Ives Number	US28
BHMA	628



FS495 shown

FS495 Meets ANSI/BHMA 156.16, L11291 for brass

FS496 Meets ANSI/BHMA 156.16, L11301 for brass

FS497 Meets ANSI/BHMA 156.16, L11301 for brass

FS495 Wall Stop & Automatic Holder

FS496 Floor Stop & Automatic Holder

FS497 Floor Stop & Automatic Holder

- Automatic door holders ideal for heavy-traffic situations that require a simple, Hold-Open device.
- Cast brass construction.
- Recommended installation is holder on door and strike on wall.
- Holder position on door is adjustable.
- Holder is tapered to prevent "child riding."

Dimensions

FS495 Holds door 3-3/4" from wall.

FS496 Door to Floor Clearances 3/8" Maximum.

FS497 Door to Floor Clearances 1" Maximum.

Finishes *brass*

Ives Number	US3	US4*	US10	US10B	US26	US26D
BHMA	605	606	612	613	625	626

* not available on FS496, FS497.



WS11
Meets ANSI/BHMA 156.16, L12011

WS11X
Meets ANSI/BHMA 156.16, L12021

**WS11
WS11X Wall Stops**

- Constructed in heavy duty cast brass.
- Hexagon section on unit aids in fastening unit when expansion shield is used.
- Replaceable rubber bumpers features off-set shoulder and threaded shank that screws into body of unit.

WS11 is furnished with wood screws for drywall mounting.
WS11X is furnished with a threaded stud and expansion shield for masonry type mounting.

Dimensions

Base Diameter: 2"
Overall Projection: 3-3/4"

Finishes *brass*

Ives Number	US3	US4	US10	US10B	US26	US26D
BHMA	605	606	612	613	625	626



WS20
Meets ANSI/BHMA 156.16, L11341 for brass
and L32341 for aluminum

WS20X
Meets ANSI/BHMA 156.16, L11351 for brass
and L31351 for aluminum

**WS20
WS20X Manual Wall Holders**

- Constructed in cast brass or aluminum.
- Replaceable rubber bumpers feature off-set shoulder and threaded shank that screws into body of holder.
- Hinged strike furnished matches body material and finish.

WS20 is furnished wood screws for drywall mounting.
WS20X is furnished with threaded stud and expansion shield for masonry type mounting.

Dimensions

Base Diameter: 2-3/8"
Overall Projection: 4"
Strike Height: 2"
Strike Width: 1"

Finishes *brass*

Ives Number	US3	US4	US10	US10B	US26	US26D
BHMA	605	606	612	613	625	626

Finishes *aluminum*

Ives Number	US28
BHMA	628

A
Hinges & Pivots



WS33
Meets ANSI/BHMA 156.16, L12011

WS33X
Meets ANSI/BHMA 156.16, L12021

WS33 **WS33X Wall Stops**

- Constructed in a durable cast brass.
- Replaceable rubber bumper with offset shoulder screws into cavity on body to prevent loss or theft.
- Sloping design discourages vandalism

WS33 is furnished with wood screws for drywall mounting.
WS33X is furnished with a threaded stud and expansion shield for masonry type mounting.

Dimensions

Base Diameter: 2-1/4" wide x 3" High

Overall Projection: 3-3/4"

Finishes *brass*

US Number	US26D
BHMA	626

B
Pulls & Plates

C
Flush Bolts & Coordinators

D
Latches, Catches & Bolts

E10
Stops

F
Exterior Hardware

G
Miscellaneous Hardware



WS65 Wall Stop

- Burnished cast aluminum.
- Replaceable non-marring white rubber bumper.
- Packed with sheet metal screws.

Dimensions

Base Diameter: 1-5/8"

Overall Projection: 3-3/4"

Finishes *aluminum*

Ives Number	US3	US10	US10B	US27
BHMA	666	668	703	673



WS401CCV & WS402CCV
Meets ANSI/BHMA 156.16 L12251 for brass

WS401CVX & WS402CVX
Meets ANSI/BHMA 156.16 L12101 for brass

WS401CVX Wall Bumpers
WS401CCV
WS402CVX
WS402CCV

- Constructed in heavy-duty cast brass.
- Special retainer cup makes rubber tamper resistant.

WS401CVX (401) – convex rubber bumper, packed with wood screw and plastic anchor.

WS401CCV (401-1/2) – concave rubber bumper which avoids damage to locks with projecting buttons, packed with wood screw and plastic anchor.

WS402CVX (402) – convex rubber bumper packed with screw and drywall anchor.

WS402CCV (402-1/2) – concave rubber bumper which avoids damage to locks with projecting buttons and is packed with screw and drywall anchor.

Dimensions

Base Diameter: 2-1/2"

Base Thickness: 3/8"

Overall Projection: 1"

Finishes

Ives Number	US3	US4	US10	US10B	US15	US26	US26D
BHMA	605	606	612	613	619	625	626



WS404CVX Wall Bumpers

- Compact size.
- Constructed in cast brass.
- Totally concealed mounting discourages vandalism or tampering.
- Unit furnished with grey convex rubber bumper.
- Packed with sheet metal screw, rawl plug and brad.

Dimensions

Base Diameter: 1"

Overall Projection: 17/32"

Finishes

Ives Number	US3	US4	US5	US10	US10B	US15	US26	US26D
BHMA	605	606	609	612	613	619	625	626

Hinges & Pivots
A

Pulls & Plates
B

Flush Bolts & Coordinators
C

Latches, Catches & Bolts
D

Stops
E11

Exterior Hardware
F

Miscellaneous Hardware
G



WS406CVX Wall Bumpers WS406CCV WS407CVX WS407CCV

WS406CVX & WS407CVX
Meets ANSI/BHMA 156.16 L22201 for brass,
and L52101 for stainless steel.

WS406CCV & WS407CCV
Meets ANSI/BHMA 156.16 L22251 for brass
and L52251 for stainless steel.

- Constructed in sturdy yet economical wrought base of brass or stainless steel construction.
- Feature concealed tamper-proof mounting.
- Shipped factory preassembled backplate to reduce installation cost.
- Easy installation by inserting screwdriver through small hole in rubber.

WS406CVX (406) – convex rubber bumper, packed with wood screw and plastic anchor.

WS406CCV (406-1/2) – concave rubber bumper, which avoids damage to locks with projecting buttons, packed with wood screw and plastic anchor.

WS407CVX (407) – convex rubber bumper packed with screw and drywall anchor.

WS407CCV (407-1/2) – concave rubber bumper which avoids damage to locks with projecting buttons and is packed with screw and drywall anchor.

Dimensions

Base Diameter: 2-1/2"

Base Thickness: 3/8"

Overall Projection: 1"

Finishes *brass*

Ives Number	US3	US4	US5*	US10	US10B	US15	US15A**	US26	US26D	B716**
BHMA	605	606	609*	612	613	619	620	625	626	

Finishes *stainless steel*

Ives Number	US32D
BHMA	630

* only available on WS407CVX Slim-Pak of 15

** available on WS407CCV or WS407CVX Slim-Pak of 15

A
Hinges & Pivots

B
Pulls & Plates

C
Flush Bolts & Coordinators

D
Latches, Catches & Bolts

E12
Stops

F
Exterior Hardware

G
Miscellaneous Hardware



411R-W Wall Bumper

- Adhesive-backed wall door stop for use on clean, smooth, flat surfaces only.
- Non-marring white rubber.
- Concave design permits knob to strike stop without damaging or engaging lock mechanism.

Dimensions

Base Diameter: 1-7/8"

Base Thickness: 3/8"

Overall Projection: 1-1/16"

Hinges & Pivots
A

Pulls & Plates
B

Flush Bolts & Coordinators
C

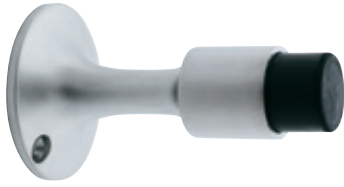
Latches, Catches & Bolts
D

E13
Stops

Exterior Hardware
F

Miscellaneous Hardware
G

A
Hinges & Pivots



WS443
Meets ANSI/BHMA 156.16, L12021 for brass and L32021 for aluminum.

B
Pulls & Plates

C
Flush Bolts & Coordinators

D
Latches, Catches & Bolts

E14
Stops

F
Exterior Hardware

G
Miscellaneous Hardware

WS443 **WS447 Wall Stop**

- Constructed in brass.
- Ideal for interior or exterior use.
- Replaceable non-marring rubber tip.

WS443 is packed with expansion shield and lead shield for masonry type mounting.
WS447 is packed with wood screws for drywall mounting.

Dimensions

Base Diameter: 2-1/4"
Overall Projection: 3-11/16"

Finishes *brass*

Ives Number	US3	US4	US10	US10B	US15	US26	US26D
BHMA	605	606	612	613	619	625	626

WS445 **WS449 Manual Wall Holder**



WS445
Meets ANSI/BHMA 156.16, L11351 for brass.

WS449
Meets ANSI/BHMA 156.16, L11341 for brass and L31341 for aluminum.

- Constructed in cast of brass or aluminum.
- Unit functions as a stop but serves as a Hold-Open device when hook is manually engaged in strike.
- Unit requires manual disengagement to release Hold-Open.
- Replaceable resilient, non-marring rubber tip.

WS445 is packed with expansion shield and lead shield for masonry type mounting.
WS449 is packed with wood screws for drywall mounting.

Dimensions

Base Diameter: 2-1/4"
Base Projection: 3-11/16"
Engaged Projection: 5-3/4"
Strike Height: 1-1/2"
Strike Width: 13/16"
Strike Projection: 13/16"

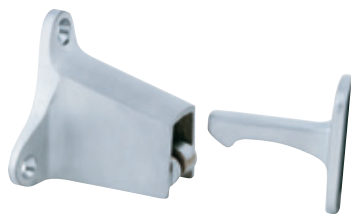
Finishes *brass*

Ives Number	US3	US4	US10	US10B	US15	US26	US26D
BHMA	605	606	612	613	619	625	626

Finishes *aluminum*

Ives Number	US28*
BHMA	628

* only available on WS449



Meets ANSI/BHMA 156.16, L11291 for brass and L31291 for aluminum.

WS40 Automatic Wall Holder

- Constructed of sturdy cast brass, or aluminum.
- Holder is mounted on wall and strike is mounted on door.
- Roller on holder rides up seats itself on strike, with a heavy duty bumper pad deadening the sound and shock.
- Universal screw pack accommodates all types wall construction.

Dimensions

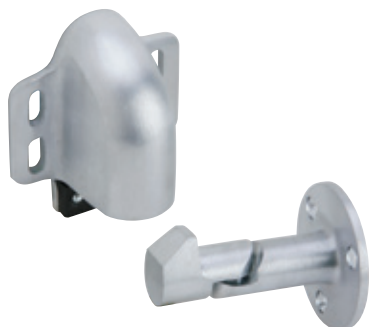
Base Height: 2"	Strike Height: 2-1/16"
Base Width: 2-1/2"	Strike Width: 3/4"
Base Projection: 2-1/4"	Strike Projection: 2"
Engaged Projection: 3-1/2"	

Finishes *brass*

Ives Number	US3	US4	US10	US10B	US26	US26D
BHMA	605	606	612	613	625	626

Finishes *aluminum*

Ives Number	US28
BHMA	628



WS45
Meets ANSI/BHMA 156.16, L11291 for brass and L31291 for aluminum.

WS45 WS45X Automatic Wall Holder

- Constructed of cast brass, bronze or aluminum.
- Spring loaded roller rides up the face of the strike, seating itself on the strike, holding the door firmly in the open position.
- A heavy rubber pad cushions the shock and absorbs the sound.
- With unit mounted on door and the strike on wall, vertical adjustment is available on body.
- The strike is adjustable 45 degrees left or right, both adjustments easily accomplished at time of installation or at a later date.

WS45 strike is furnished with wood screws for drywall mounting.

WS45X strike is furnished with a threaded stud and expansion shield for masonry type mounting.

Dimensions

Base Height: 3-11/16"	Strike Diameter: 2-3/8"
Base Width: 3"	Strike Projection: 3"
Base Projection: 2"	
Engaged Projection: 3-7/16"	

Finishes *brass*

Ives Number	US3	US4	US10	US10B	US26	US26D
BHMA	605	606	612	613	625	626

Finishes *aluminum*

Ives Number	US28
BHMA	628

A
Hinges & Pivots

B
Pulls & Plates

C
Flush Bolts & Coordinators

D
Latches, Catches & Bolts

E15
Stops

F
Exterior Hardware

G
Miscellaneous Hardware

A
Hinges & Pivots



B
Pulls & Plates

C
Flush Bolts & Coordinators

Meets ANSI/BHMA 156.16, L11383 for brass and L31383 for aluminum.

D
Latches, Catches & Bolts

E16
Stops



F
Exterior Hardware

Meets ANSI/BHMA 156.16, L11382 for brass and L31382 for aluminum.

G
Miscellaneous Hardware

FS452 Kick Down Holder

- Units provide simple hold and release, activated with a touch of the foot.
- Cast brass or aluminum construction.
- Stainless steel spring.
- Replaceable non-marring rubber shoes have corrugated bottoms to provide secure grip.
- Shoes are easily replaced when worn. Shoe held on with screw.
- Packed with sheet metal screws.

FS452-4 has a door-to-floor clearance of 2" or less.
FS452-5 has a door-to-floor clearance up to 3".

Dimensions

FS452-4 Door-to-Floor Clearance: 2" or less

FS452-5 Door-to-Floor Clearance: Up to 3"

FS452-4 Plate Height: 2-1/8"

FS452-5 Plate Height: 2-1/8"

FS452-4 Plate Width: 1"

FS452-5 Plate Width: 1"

Finishes *brass*

Ives Number	US3	US4	US10	US10B	US15	US26	US26D
BHMA	605	606	612	613	619	625	626

Finishes *aluminum*

Ives Number	US28*
BHMA	628

* available in 4" only

FS455 Kick Down Holder

- Units provide simple hold and release, activated with a touch of the foot.
- Cast brass or aluminum construction.
- Replaceable non-marring rubber shoes have corrugated bottoms to provide secure grip. When worn, shoes are easily replaced. Shoe held on with screws.
- Door-to-floor clearances of 2" or less.

Dimensions

Door-to-Floor Clearance: 2" or less

Plate Height: 1-3/4"

Plate Width: 1-3/4"

Finishes *brass*

Ives Number	US3	US4	US5	US10	US10B	US15	US26	US26D
BHMA	605	606	609	612	613	619	625	626

Finishes *aluminum*

Ives Number	US3AL	US5AL	US10AL	US27
BHMA	666	609	668	673



FS544
Meets ANSI/BHMA 156.16, L11381

FS555
Meets ANSI/BHMA 156.16, L11391

FS544 **FS555 Kick Down Holder**

- Units provide an economical method to hold open doors.
- Cast of durable iron.
- Non-marring rubber shoes have corrugated bottoms to provide secure grip. Rubber shoe is securely fastened with screw. When worn, shoes are easily replaced.

FS544 for door-to-floor clearances of 2" or less
FS555 for door-to-floor clearances up to 3".

Dimensions

FS544	FS555
Door-to-Floor Clearance: 2" or less	Door-to-Floor Clearance: Up to 3"
Plate Height: 2-1/4"	Plate Height: 2-1/4"
Plate Width: 1-7/16"	Plate Width: 1-7/16"

Finishes

Ives Number	SP4	SP10	SP28	SP313	SPBLK
BHMA	706	691	689	695	622

Hinges & Pivots
A

Pulls & Plates
B

Flush Bolts & Coordinators
C

Latches, Catches & Bolts
D

E17
Stops

Exterior Hardware
F

Miscellaneous Hardware
G

A
Hinges & Pivots



Meets ANSI/BHMA 156.16, L31401.

B
Pulls & Plates

C
Flush Bolts & Coordinators

D
Latches, Catches & Bolts

E18
Stops

F
Exterior Hardware

G
Miscellaneous Hardware

FS1153 Plunger Type Door Holder

- Provides a contemporary yet economical method of positive Hold-Open.
- Constructed in sturdy cast aluminum.
- Spring operated plunger activates with minimal pressure, releasing instantly with a light tap on the plat-form lever.
- Provides a 1-5/8" throw for all types of doors.
- Ribbed non-marring rubber shoe is securely fastened to unit with a screw and is easily replaced when worn.

Dimensions

Height: 6-1/4"
Width: 1-1/2"
Depth: 1-7/16"

Finishes

Ives Number	US28
BHMA	628

FS1154 Plunger Type Door Holder

- Constructed from heavy-duty cast brass or bronze.
- Plunger and internal parts are plated steel and provides a 1-1/4" throw for all types of doors.
- Plunger is easily activated with minimal pressure, releasing instantly with a light tap on the platform lever.
- Round non-marring rubber shoe is securely fastened with a screw in flanged cup to prevent movement or loss. When worn, shoes are easily replaced.

Dimensions

Height: 5-1/2"
Width: 2"
Depth: 1-1/4"

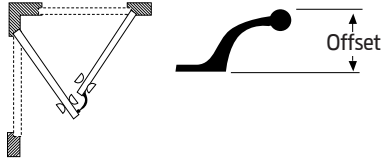
Finishes

Ives Number	US3	US4	US10	US10B	US26	US26D
BHMA	605	606	612	613	625	626



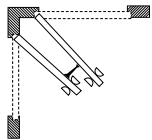
FS470

Meets ANSI/BHMA 156.16, L12212



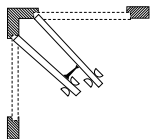
FS471

Meets ANSI/BHMA 156.16, L12192



FS472

Meets ANSI/BHMA 156.16, L12202



RB470 RB471 RB472 Roller Bumpers

- Constructed in heavy-duty cast brass.
- RB470 used where two doors open against each other to prevent damage to the doors or hardware.
- RB471 and RB472 are ideal for use in situations where doors meet each other at approximate right angles (back to back).
- Replaceable rubber roller available.

Dimensions

RB470 Base Size: 1-11/16" x 2-1/4"

RB470 Arm Offset: 2-3/4"

RB470 Length: 5"

RB471 Base Diameter: 2"

RB471 Length: 4-1/2"

RB472 Base Diameter: 2"

RB472 Length: 6"

Finishes

Ives Number	US3	US4**	US10*	US10B*	US15*	US26	US26D
BHMA	605	606**	612*	613*	619*	625	626

* only available on RB472

** only available on RB471 and RB472

A
Hinges & Pivots

B
Pulls & Plates

C
Flush Bolts & Coordinators

D
Latches, Catches & Bolts

E19
Stops

F
Exterior Hardware

G
Miscellaneous Hardware

A
Hinges & Pivots



Meets ANSI/BHMA A156.16

060 Flexible Door Stops 061

- Utilizes heavy gauge spring to maintain rigid protections
- Simple to install - only a screwdriver required
- Made from burnished wrought steel
- Packed disassembled for quick installation

Replaceable white rubber tip available

B
Pulls & Plates

Dimensions

Base Diameter: 1"

Tip Diameter: 19/16"

060 3" Projection

061 4" Projection

Finishes *steel*

Ives Finish	F3	F5	F10	F10B	F14	F15*	F26D	F-W**
BHMA	632	638	639	640	645	646	652	

* only available on 060

** only available on 061

C
Flush Bolts & Coordinators

D
Latches, Catches & Bolts



60 Base Door Stops 61

- Available in three sizes to accommodate varying areas of installation and door trim dimensions
- Made from solid brass or aluminum
- 61 also available in epoxy colored aluminum

Replaceable white/black rubber tip available

Dimensions

60 3-3/4" Projection, Base Diameter: 1"

61 3-1/8" Projection on brass units, 3-3/16" Projection on aluminum units, Base Diameter: 7/8", Tip Diameter: 5/8"

Finishes *brass*

Ives Finish	B3	B4	B5	B10	B10B	B15	B15A*	B26	B26D	B716**
BHMA	605	606	609	612	613	619	620	625	626	

Finishes *aluminum*

Ives Finish	A3	A5*	A10*	A10B	A14	A15*	A19*	A92	A716*	A-BLK	A-W*
BHMA	666		668	703	669	670	A19	673			

Finishes *zinc*

Ives Finish	Z605*	Z619*	Z716*
BHMA			

* only available on 61

** only available on 61 Schlage Carded or slim package of 15

Note: 61A - 716 ships with black rubber tips

E20
Stops

F
Exterior Hardware

G
Miscellaneous Hardware



63 Flexible Door Stops

- Utilizes heavy gauge spring to maintain rigid protections
- Simple to install - only a screwdriver required
- Made from burnished wrought steel
- Packed disassembled for quick installation

Replaceable white rubber tip available

Dimensions

Base Diameter: 1"
 Tip Diameter: 9/16"
 Projection: 3"

Finishes steel

Ives Finish	F605E	F609E	F619E	F716	F-W
BHMA	632	638	646		



64 Base Door Stop

- Base Door Stop features deluxe one-piece styling
- Easily screws into base
- Designed with square head to accommodate wrench or pliers when installing
- Made from solid brass or aluminum

Replaceable white rubber tip available

Dimensions

Base Diameter: 1"
 Tip Diameter: 9/16"
 Projection: 3-1/4"

Finishes brass

Ives Finish	B3	B4	B5	B10	B10B	B15	B26	B26D
BHMA	605	606	609	612	613	619	625	626

Finishes aluminum

Ives Finish	A3	A10B	A92
BHMA	666	703	673



69 Hinge Pin Door Stops

- For use on hinged doors where the installation of a standard door stop is not desirable
- Positive slip proof adjustment
- Non-marring rubber tips
- Removable bushings accommodate 1/4" to 5/16" diameter hinge pins
- Easy installation—only a screwdriver required
- Made from burnished wrought steel

Replaceable white rubber tip available

Door Opening

70° to 100° Door Opening Adjustments

Finishes steel

Ives Finish	F3	F5	F10	F10B	F14	F15	F15A	F26	F26D
BHMA	632	638	639	640	645	646	647	651	652

Hinges & Pivots
A

Pulls & Plates
B

Flush Bolts & Coordinators
C

Latches, Catches & Bolts
D

E21
Stops

Exterior Hardware
F

Miscellaneous Hardware
G

A Hinges & Pivots

B Pulls & Plates

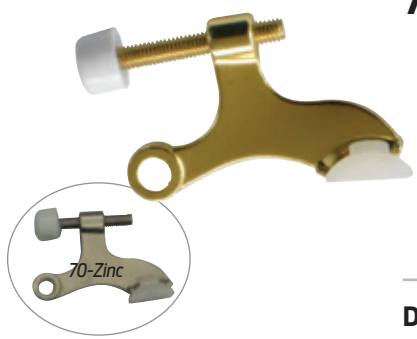
C Flush Bolts & Coordinators

D Latches, Catches & Bolts

E22 Stops

F Exterior Hardware

G Miscellaneous Hardware



70 Hinge Pin Door Stops

- For use on hinged doors where the installation of a standard door stop is not desirable
 - Designed for narrow trim installation
 - High quality rubber bumpers - shoulder on stud supports rubber through entire body for engineered cushioning
 - Removable bushings accommodate 1/4" to 5/16" diameter hinge pins
 - Easy installation
 - Made from solid brass, aluminum, or epoxy coated aluminum
- Replaceable white/black rubber tip available

Door Opening
85° to 125° Door Opening Adjustments

Finishes brass

Ives Finish	B3	B4	B5	B10	B10B	B15	B15A*	B19	B26	B26D	B716*
BHMA	605	606	609	612	613	619	620	622	625	626	

Finishes aluminum

Ives Finish	A3	A4	A5	A10	A10B	A14	A15	A92	A716	A-W	A-BLK
BHMA	666	667		668	716	669	670	673			

Finishes zinc

Ives Finish	Z605E	Z406E**	Z619E**	Z716E
BHMA				

* only available in Schlage Carded or Slim-Pak of 25
 ** only available in Schlage Carded
 Note: 70A - 716 ships with black rubber tips



Door Saver

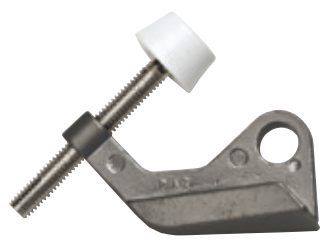
72 Hinge Pin Door Stops

- For use on hinged doors where the installation of a standard door stop is not desirable
- Designed for narrow trim installation
- High quality rubber bumpers - shoulder on stud supports rubber through entire body for engineered cushioning
- Removable bushings accommodate 1/4" to 5/16" diameter hinge pins
- Easy installation
- Made from solid brass, aluminum, or epoxy coated aluminum

Door Opening
85° to 125° Door Opening Adjustments

Finishes zinc

Ives Finish	Z605E	Z609E	Z613E	Z619E	Z625E	Z-W
BHMA						



Door Saver

Meets ANSI/BHMA 156.6, L12141 for brass or bronze and L32141 for aluminum.

73 Hinge Pin Door Stops

- For use on hinged doors where the installation of a standard door stop is not desirable
- Designed for narrow trim installation
- High quality rubber bumpers - shoulder on stud supports rubber through entire body for engineered cushioning
- Removable bushings accommodate 1/4" to 5/16" diameter hinge pins
- Easy installation
- Made from solid brass, aluminum, or epoxy coated aluminum

Door Opening
85° to 125° Door Opening Adjustments

Finishes zinc

Ives Finish	Z605E	Z613E	Z619E	Z625E
BHMA				



Meets ANSI/BHMA 156.16, L03011.

SR64 Door Silencer

- For use on metal frames featuring pneumatic design that, once installed, forms an air pocket to absorb shock and reduce noise of door closing.
- Tamper-proof once installed on the frame.
- Proper installation also eliminates door rattle and provides constant tension for door latches or locks.

Packed in bags of 100.
 Grey Available in bulk pack of 2500.
 Each bag has an installation tool included.

Dimensions

Diameter: 1/2"
 Thickness: 1/8"

Finishes

GRY, TAN



Meets ANSI/BHMA 156.16, L03021

SR65 Door Silencer

- For use on wood frames, also feature pneumatic design to cushion shock and absorb noise.
- To prevent removal, a small brad should be driven into stop strip and through stem of silencer, as shown in the detail.

Packed in bags of 100.

Dimensions

Height: 3/4"
 Diameter: 3/8"
 Thickness: 1/8"

Finishes

GRY



SR66 Door Silencer

- Self Adhesive Rubber Silencers.
- Economical installation requires no drilling of frames.

Packed two sheets of 50 (100 minimum).

Dimensions

Diameter: 1/2"
 Thickness: 1/8"

Finishes

BRN, GRY, WHT

A
Hinges & Pivots

B
Pulls & Plates

C
Flush Bolts & Coordinators

D
Latches, Catches & Bolts

E23
Stops

F
Exterior Hardware

G
Miscellaneous Hardware

A Hinges & Pivots
B Pulls & Plates
C Flush Bolts & Coordinators
D Latches, Catches & Bolts
E24 Stops
F Exterior Hardware
G Miscellaneous Hardware