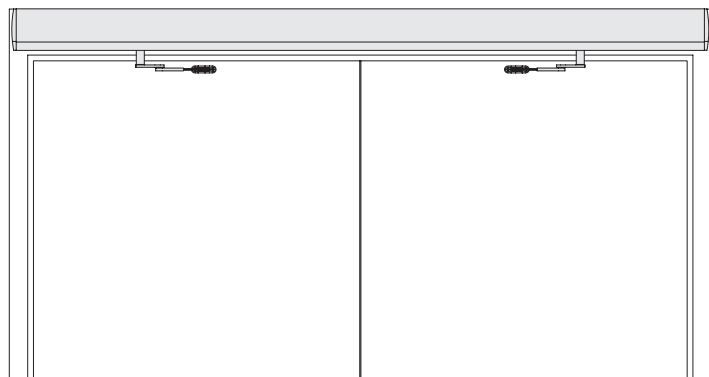


# 9150 SERIES

## PAIR DOOR, SURFACE MOUNT (PUSH) OFFSET PIVOT/BUTT HINGE



The 9150 BENCHMARK by LCN is an electrically powered low-energy operator. It provides easy access for people with disabilities, or the elderly. Designed primarily for automatic opening applications that occasionally require manual opening. The BENCHMARK is a cost-effective solution for retrofitting an activated or manual door.

- Push 'N Go permits non-switch activation.
- Microprocessor control box ensures reliability and maintains customer settings.
- Power Boost allows for increased closing force near latch.

- 9150 Series operator is shipped with motor gearboxes, control boxes, mounting plate, regular arms, metal cover, wood and machine screw packs. Actuators available separately, see pages 122-137.
- Pair of interior doors, surface mounted.
- ADA compliant.
- On/Off switch included as standard.
- Non-handed for either right or left swinging door.
- 72" cover is standard.
- All potentiometers clearly labeled with their functions.
- LED lights indicate power to control box and motor gearbox.

*9150 Series is fully compliant with UL 325 and meets the provisions of ANSI A156.19. The 9150 Series is UL listed for fire-rated applications. The 9150 Series also meets the provisions of the Americans with Disabilities Act.*

MOUNTING						HANDING		FINISH	COVER	ARM FUNCTION			
SURFACE MOUNT SINGLE DOOR	●	●	○	○	○	HANDED	●	STANDARD ANODIZED	●	STANDARD (SINGLE LEVER)	○	○	○
SURFACE MOUNT SIMULTANEOUS PAIR	○	○	○	○	○	NON-HANDED	○	METAL	○	REGULAR (DOUBLE LEVER)	○	○	○
SURFACE MOUNT INDEPENDENT PAIR	○	○	○	○	○					DOUBLE EGRESS (PUSH/PULL)	○	○	○
CONCEALED SINGLE DOOR	○	○	○	○	○					OFFSET PIVOT BUTT HINGE ARM	○	○	○
CONCEALED SIMULTANEOUS PAIR	○	○	○	○	○					CENTER PIVOT ARM	○	○	○
CONCEALED INDEPENDENT PAIR	○	○	○	○	○								

● AVAILABLE  
○ NOT AVAILABLE

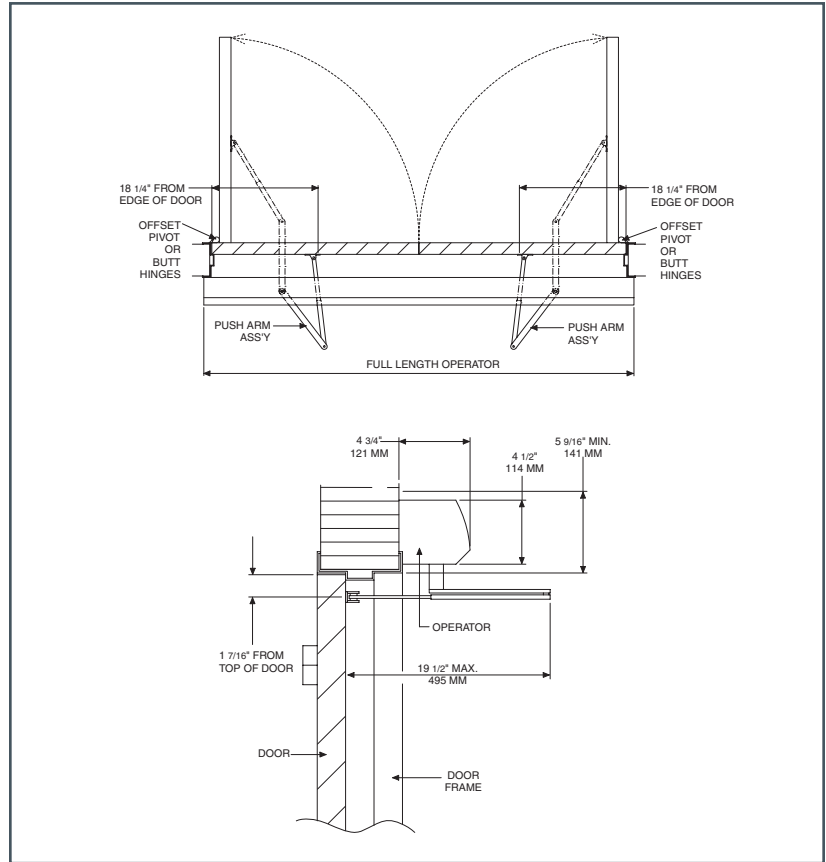
# 9150 SERIES

## TOP JAMB, INDEPENDENT/ SIMULTANEOUS PAIR (OFFSET PIVOT/BUTT HINGE, CENTER PIVOT, PUSH) MOUNTING

Determined by wiring method during installation.

### MAXIMUM OPENING

Template allows 90 degree power opening and 90 degree manual opening.



- **Butt Hinges** should not exceed 5" (127 mm) in width.
- **Reveal** for push installations should not exceed 6" (152 mm) for REGULAR ARM and 9-3/4" (248 mm) for LONG ARM.
- ▶ **Head Frame** minimum 2" (51 mm).
- **Top Rail** minimum 2" (51 mm). Flush ceiling installation requires 5-1/4" (133 mm) minimum.
- **Opening and Closing Time** are variable by adjustments to the electronic control module located on the operator assembly. Maximum hold open time adjustable up to approximately 32 seconds.
- **System Diagram** see "AUTOMATIC OPERATORS" section pages 53 for typical system wiring and page 56 for electrical data.

Contact LCN Product Support  
for installation assistance.

# 9150 SERIES

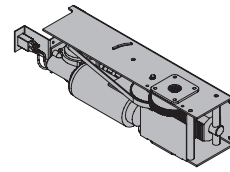
## ACCESSORIES

### MOTOR GEARBOX

#### MOTOR GEARBOX ASSEMBLY, 9150-3454S

Driving mechanism for operator. (Switch included).

3454S

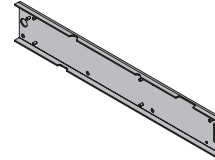


### BRACKETS

#### MOUNTING BRACKET, 9150-3018

Standard mounting bracket.

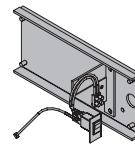
3018



#### SWITCH BRACKET - 51" CABLE, 9150-3351-3

Bracket used to locate switch at end of cover on full length unit.

3351-3

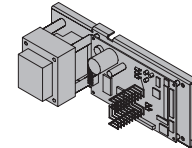


### CONTROL BOXES

#### CONTROL BOX, (120v), 9150-3462

Electronic controlling device with power supply output and power boost feature for Benchmark.

3462

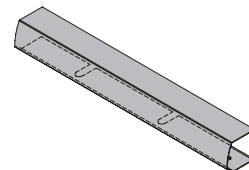


### COVERS

#### METAL COVER, 9150-72MC

Standard, 72", non-handed, extruded aluminum cover.

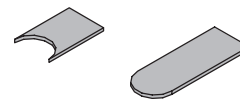
72MC



#### COVER INSERT 9150-163

Used to cover operator shaft opening. (Includes 2 pieces).

163



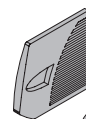
#### COVER END CAP INSERT, 9150-163-1

Used to cover switch hole opening.

#### COVER END CAP, 9150-334

Black plastic end Caps. (Includes 9130-163-1 cover and cap insert).

334



163-1

NOTE (\*334 includes 163-1)

# 9150 SERIES

## ARMS

### REGULAR ARM, 9150-3077

Non-handed arm.

### LONG ARM, 9150-3077L

Non-handed long arm.

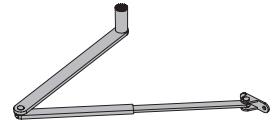
### ROD & SHOE, 9150-79

Rod for use with regular arm.

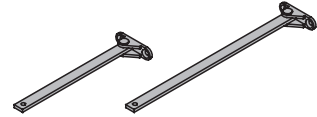
### LONG ROD & SHOE, 9150-79LR

Long rod used with long arm for deep reveal.

3077  
3077L



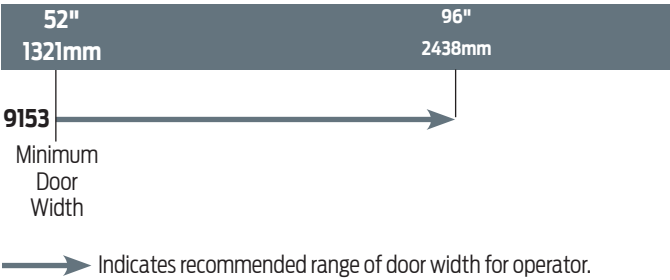
79LR  
79



# 9150 SERIES

## TABLE OF SIZES

### DOOR WIDTH



NOTE: For 9150 Benchmark Series.  
72" door width only for full length push double door operator.

## HOW-TO-ORDER 9150 SERIES OPERATORS

### 1. SPECIFY FINISH

- ☐ Standard Anodized Finish \_\_\_\_\_  
Aluminum or Dark Bronze.

### Operator will be shipped with:

- STANDARD MOTOR GEARBOX (2 ea),
- STANDARD CONTROL BOX (2 ea),
- MOUNTING BRACKET (2 ea),
- 72" METAL COVER,
- STANDARD ARM (2 ea),
- WOOD and MACHINE SCREW PACK

Unless options listed below are selected.

## OPERATOR OPTIONS

### ARM

- ☐ Long Arm (3077L)  
(Reveals 6" to 9-3/4")

[illegible]