

LCN®

Actuators and sensors

Overview

LCN actuators and sensors are designed to be used with LCN automatic operators. The desired function, traffic patterns and physical design of the opening will determine the type of actuator used.

Safety and activation sensors are designed to both protect pedestrians, and help prolong the life of an automatic operator. LCN safety sensors can be used on all automatic operators – high and low energy.

LCN also offers a full line of activation device accessories, including: surface and flush mounted boxes, weather rings, escutcheons, wireless transmitters and receivers (4 channel), key chain activation devices (up to 4 buttons), sequencers, and a bollard post (used with 4 3/4" square actuator.)

Features and benefits

- Complies with ANSI 156.19
- Can be ordered individually or in kits that combine common products for a specific application
- Beveled edges provide a tamper and vandal resistant solution to push plate needs, allowing no room for objects to get between plate and mounting box
- An all-active plate activates with any "push" location
- Stainless steel finish will not deteriorate or rust where it is touched — scratch and scuff resistant
- All activation push plates are available with ADA logo art and text or with ADA logo art only
- Text and ADA Compliant logo art are baked onto the surface for added durability

Push plates

Round push plates



Stainless steel
6" Round style push plate



Stainless steel
4 1/2" Round style push plate

Square push plates



Stainless steel
4 3/4" Square style push plate

Jamb push plates



Stainless steel
Jamb style push plate



Stainless steel
Dual jamb style push plate

Ready mount actuators



Stainless steel
6" Slim profile push plate



Stainless steel
4 3/4" Round style push plate

Sensors



Door mount
Safety sensor



Header mount
Safety sensor

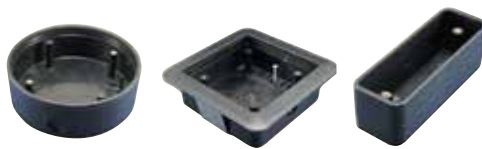


Header mount
Activation sensor

Actuator accessories

LCN offers a full line of activation device accessories, including: surface and flush mounted boxes, weather rings, escutcheons, wireless transmitters and receivers (4 channel), key chain activation devices (up to 4 buttons), sequencers, and a bollard post (used with 4 3/4" square actuator)

Mounting boxes



Weather rings



Bollard post



Wireless transmitters/receivers



Allegion, the Allegion logo, LCN and the LCN logo are trademarks of Allegion plc, its subsidiaries and/or affiliates in the United States and other countries. All other trademarks are the property of their respective owners.

About Allegion

Allegion (NYSE: ALLE) creates peace of mind by pioneering safety and security. As a \$2 billion provider of security solutions for homes and businesses, Allegion employs more than 7,800 people and sells products in more than 120 countries across the world. Allegion comprises 23 global brands, including strategic brands CISA®, Interflex®, LCN®, Schlage® and Von Duprin®. For more, visit www.allegion.com.

aptiQ ■ LCN ■ SCHLAGE ■ STEELCRAFT ■ VON DUPRIN



© 2014 Allegion
010114, Rev. 02/14
www.allegion.com/us