

Corbin
Russwin®
ASSA ABLOY



CL3100 Series Lever Lock

Corbin Russwin's CL3100 Series is the ideal solution for the toughest environments within healthcare facilities. The unique T-Zone construction provides strength and reliability that easily exceeds ANSI/BHMA Grade 1 requirements for torque and cycle testing. The design also simplifies facility maintenance by utilizing a single lock body for all functions.

Flexible, strong, and durable – this lock can take whatever you give it.

ASSA ABLOY, the global leader
in door opening solutions





**Corbin
Russwin**
ASSA ABLOY

CL3100 Series

Vandal Resistant Lever Lock

Applications

- › Laboratories
- › Bathrooms
- › Storage Closets

Features:

- 18 functions available, including Hospital Privacy; most requiring only 2 parts to change function
- Simple cylinder removal provides easy change outs
- 10-year limited warranty
- Made from 68% post-consumer recycled content as per LEED MR credit 4
- Available in 11 hardware finishes and Microshield® antimicrobial coating
- Integrates into most existing facility's key systems, and accepts Schlage® LFIC
- Retrofits most standard 161 cylindrical lock door preps and is non handed

Strength and Cycle Testing

- Withstands more than 2 TIMES ANSI/ BHMA A156.2 Grade 1 torque force on a locked lever
- T-Zone lock construction tested to 15 times the standard in ANSI/BHMA A156.2 Grade 1 cycle testing. 15 MILLION cycles equals over 55 years of opening life in many facilities!

Benefits

Safe and Secure: Torque resistant T-Zone construction provides ability to withstand tough environments like healthcare facilities to keep occupants and property safe and secure

Lower Cost of Ownership: Fewer inventoried parts means less management and high number of opening cycles provides long life

Reliable and Durable: Independently verified cycle testing proves the CL3100 series will last the lifetime of the facility

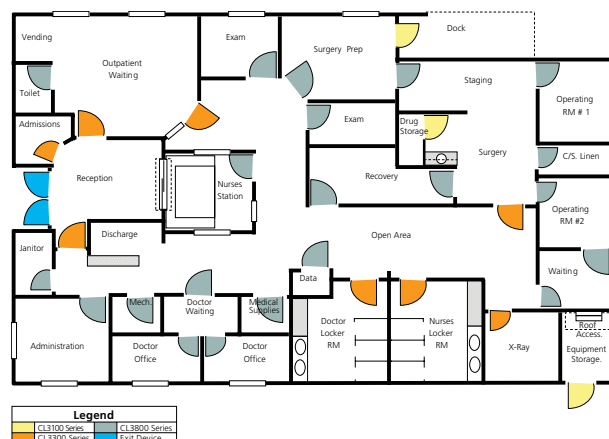
Sustainable: Contributes to your sustainability efforts - less lock replacements due to long life and high post-consumer recycled content

Healthy Environment: Microshield™ coating available; supplements your cleaning protocol for a healthier environment to keep germs at bay



Security Continuum

Using a combination of the CL3100, CL3300 and CL3800 series locks, each opening can have the right level of strength and durability, all with the same key system - cost-effectively!



MicroShield®

As part of their promise to provide innovative solutions to their customers, certain ASSA ABLOY Group brands offer the MicroShield® technology, registered with the EPA and FDA. Microshield® is a silver-based antimicrobial coating designed to inhibit the growth of bacteria.

MicroShield® is a registered trademark of Yale Security Inc., an ASSA ABLOY Group company.

**Corbin
Russwin**
ASSA ABLOY

Corbin Russwin Architectural Hardware
225 Episcopal Road
Berlin, CT 06037
Phone 800-543-3658
Fax 800-447-6714
corbinrusswin.com

Corbin Russwin and Design® is a registered trademark of Corbin Russwin, Inc., an ASSA ABLOY Group company. These materials are protected under US copyright laws. Other products' brand names may be trademarks or registered trademarks of their respective owners and are mentioned for reference purposes only. All contents current at time of publication. Corbin Russwin, Inc., an ASSA ABLOY Group company reserves the right to change availability of any item in this sell sheet, its design, construction, and/or its materials. Copyright © 2012 Corbin Russwin, Inc., an ASSA ABLOY Group company. All rights reserved. Reproduction in whole or in part without the express written permission of Corbin Russwin, Inc. is prohibited.

ASSA ABLOY is the global leader in door opening solutions, dedicated to satisfying end-user needs for security, safety and convenience

45252-3/12N