

# Behavioral Health Series™



**BHL Trim**



## Safe and Sound

The SARGENT BHL trim is part of the Behavioral Health Series™ of products. With an array of functions, this trim can be used on virtually any opening in healthcare environments. Sloping surfaces and overlapping rose and lever address safety concerns common in behavioral health facilities. Perfect for tough environments, the BHL trim uses the SARGENT 8200 mortise lock, providing impressive strength and reliability.



### Features

- Overlapping lever and rose construction
- Uses the ANSI/BHMA Grade 1 8200 mortise lock
- Available in 21 functions, including Asylum/Institutional (ANSI F30) and Institutional Privacy (ANSI F26) and 4 electrified options
- Uses standard mortise prep
- Stainless Steel finishes (629, 630) standard; MicroShield® antimicrobial coating optional
- Matching behavioral health thumbturn available
- UL Listed for use with Fire Rated doors
- ADA Compliant



#### MicroShield®

As part of their promise to provide innovative solutions to their customers, certain ASSA ABLOY Group brands offer the MicroShield® technology, a silver-based antimicrobial coating designed to inhibit the growth of bacteria.

MicroShield® is a registered trademark of Yale Security Inc., an ASSA ABLOY Group company.

*NOTE: Although these products are better designed for behavioral health applications than traditional trim, they do not eliminate the risk that an object can be affixed to, or around them.*

**SARGENT Manufacturing Company**  
For more information call 800-727-5477 or visit us  
online at [www.sargentlock.com](http://www.sargentlock.com)

Copyright © 2012 Sargent Manufacturing Company, an ASSA ABLOY Group company. All rights reserved. Reproduction in whole or in part without the express written permission of Sargent Manufacturing Company is prohibited.

ASSA ABLOY is the global leader in door opening solutions, dedicated to satisfying end-user needs for security, safety and convenience.

### Benefits

- Strong and durable: lock exceeds ANSI/BHMA Grade 1 requirements to withstand abusive environments
- Flexible: 21 functions, including electrified; can be used on many opening types
- Minimizes risk: Sloped surfaces and overlapping rose with lever address common concerns in behavioral health environments; available with MicroShield® antimicrobial coating
- Simple retrofit: Upgrade existing openings easily; uses standard mortise door prep

### Applications

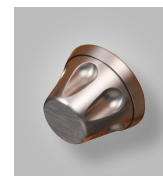
- Behavioral Health Units
- Patient Room Doors
- De-escalation Rooms
- Psychiatric Facilities
- Assisted Living Facilities

### Other Products in the Behavioral Health Series

- BHW Trim for the 8200 Mortise Lock
- BHD Knob for use with 7800 Series and 9200 Series
- Push/Pull Paddle Trim (ALP) for the 8200 Mortise Lock and HP Bored Lock



BHW Trim



BHD Knob



ALP Trim