

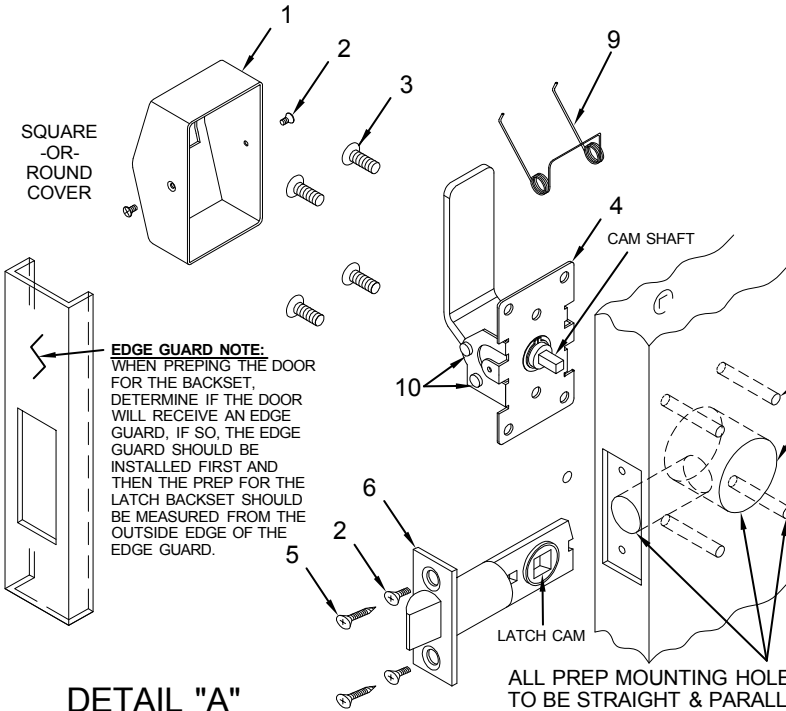
A6200-7C SERIES ANGLE KNOB INSTALLATION



NOTES

1. TRIM CAN BE MOUNTED UP, DOWN, HORIZONTALLY OR VERTICALLY. **
2. USES STANDARD 161 DOOR PREP.
3. VISION LITE MUST BE AT LEAST 6" FROM LATCH PREP.

ITEM	QTY	PART DESCRIPTION
1	1	COVER
2	4	8-32 X 3/8" F.H.M.S.
3	4	10-32 X 1/2" PH. FLAT HD. M.S.
4	1	HANDLE TRIM ASS'Y
5	2	#8 X 3/4" PH. FL. HD. W.S.
6	1	LATCH
7	1	7C ASYLUM ASSEMBLY PLATE
8	.	.
9	REF	SPRING
10	REF	PIN & COTTER PIN



VERIFY CORRECT BACKSET AND HORIZONTAL OR VERTICAL MOUNTING BEFORE DRILLING. THEN USE BACKSET TEMPLATE THAT IS SUPPLIED.

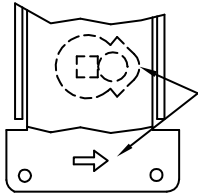
▲ = (4) THRU HOLES MUST BE 3/8" DIA.

EDGE GUARD NOTE:
WHEN PREPING THE DOOR FOR THE BACKSET, DETERMINE IF THE DOOR WILL RECEIVE AN EDGE GUARD, IF SO, THE EDGE GUARD SHOULD BE INSTALLED FIRST AND THEN THE PREP FOR THE LATCH BACKSET SHOULD BE MEASURED FROM THE OUTSIDE EDGE OF THE EDGE GUARD.

7C ASYLUM LEVER MUST BE MOUNTED AS SHOWN

ASYLUM TRIM ASSEMBLY
PRE ASSEMBLED
AT THE FACTORY

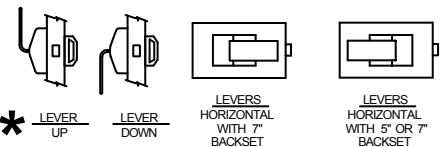
DETAIL "A"



NOTE:

BEFORE MOUNTING PUSH OR PULL HANDLE, CAM PIN MUST BE ROTATED TOWARD SIDE INDICATED BY ARROW STAMPED ON BASE

ALL PREP MOUNTING HOLES TO BE STRAIGHT & PARALLEL TO ONE ANOTHER, THIS WILL HELP PREVENT ANY BINDING OF MECHANICAL PARTS. ▲



INSTALLATION INSTRUCTIONS:

1. PREP DOOR ACCORDING TO LATCH BACKSET AND DETERMINE IF TRIM IS TO BE MOUNTED HORIZONTAL OR VERTICAL MOUNTING USING BACKSET TEMPLATE. ▲
2. INSTALL LATCH USING EITHER WOOD (item 5) OR MACHINE SCREWS (item 2) DEPENDING ON DOOR TYPE.
3. ASSEMBLE TRIM:
 - A) SELECT THE ASYLUM TRIM ASS'Y (item 7) FIRST. PLACE ASYLUM TRIM ON APPROPRIATE SIDE OF THE DOOR AND SLIDE CAM SHAFT THROUGH THE LATCH CAM,
 - B) THEN WITH HANDLE TRIM ASS'Y (item 4) IN HAND, ROTATE THE CAM PIN UNTIL THE CAM PIN STOPS ON THE APPROPRIATE SIDE INDICATED BY THE ARROW (SEE DETAIL "A").
 - C) PLACE HANDLE TRIM ASS'Y ON OTHER SIDE OF THE DOOR ENGAGING THE HANDLE CAM ONTO THE ASYLUM CAM SHAFT. MOUNT TRIM WITH (4) 10-32x1/2" MACHINE SCREWS (item 3).
TEST BOTH TRIM HANDLES FOR FREE MOVEMENT OF THE LATCH BOLT BEFORE TIGHTENING ALL SCREWS. IF LATCH BOLT DOES NOT EXTEND OR RETRACT FREELY BECAUSE OF ANY TYPE OF BINDING, LOOSEN MOUNTING SCREWS TO ADJUST ALIGNMENT OF TRIM AND RETIGHTEN SCREWS ONE AT A TIME WHILE CHECKING LATCH BOLT MOVEMENT FROM BOTH SIDES OF THE DOOR.
 - D) TEST FOR PROPER OPERATION AND CHECK THAT THE MOUNTING HARDWARE (item 3) & (item 7) **IS TIGHT** BEFORE PROCEEDING WITH THE NEXT STEP.
 - E) PLACE COVER (item 1) OVER HANDLE TRIM ASS'Y AND SECURE WITH (2) FLAT HEAD SCREWS (item 2).

PATENT No. 6,196,599



® www.abhmfg.com

E-mail: abhinfo@abhmfg.com

Architectural Builders Hardware Mfg., Inc.

1222 Ardmore Ave., Itasca, IL 60143

630.875.9900; FAX 800.9FAXABH (932.9224)

©2014 ABH Mfg., Inc.
printed in USA

A6200-7C INSTALLATION-1-04.DWG

A6200-7C

REVISED 09-16-14