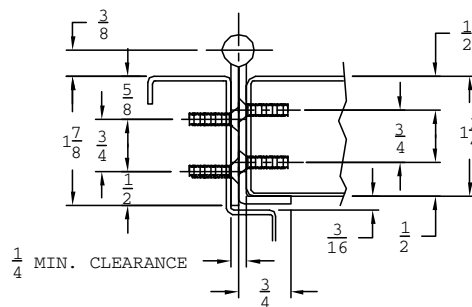


# A515 with Edge Guard



- Concealed
- For square edged doors
- For 1-3/4" doors
- For high traffic, high abuse doors
- Heavy-Duty 14 Gauge 304 Stainless Steel
- US32D Satin Stainless Steel
- Door edge lip on stop side only
- Self drilling screws
- Supports door weights up to 600 lbs.
- 4'0" Maximum door width
- No exposed fasteners when door is closed
- UL & ULC fire listed



## Standard Options

- Hospital Tip- Suffix "HT"
- Dutch Door- Suffix "DD"
- Security Fasteners (Pin-in-Torx)
- Welded End Pins
- Sizes: 6' 8", 7' 0", 7' 2", 8' 0", 10' 0"
- Custom Lengths- Specify Length
- Custom Powder Coated Finishes

## Electrical Options

- Power Transfer Prep- Suffix "PT"
- Concealed Thru Wire
  - (2) 18ga. Wire
  - (4) 28ga. Wire
  - (8) 28ga. Wire
- Expose Monitoring Switch- Suffix "ES"

**Fire Rating- UL and ULC fire Listed**  
 3 hours-hollow metal door  
 90 min.-hollow metal and composite core wood fire door  
 20 min.-wood door

## CROSS REFERENCE

ABH	Markar	Roton	Stanley	Ives
A515	HG315	790-915	653HD	715

\* Brand names are trademarks or registered trademarks of their respective companies.

It is not assured nor suggested that any two products are exactly the same. The assessment of which products are most similar comes from information provided by trade sources.